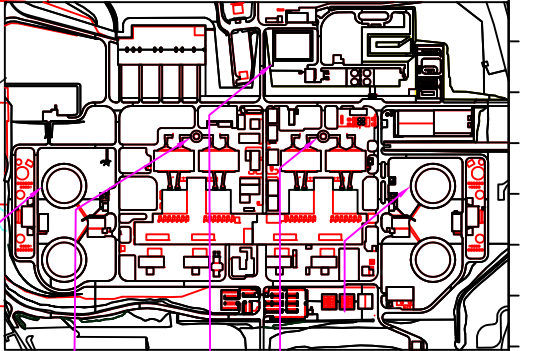
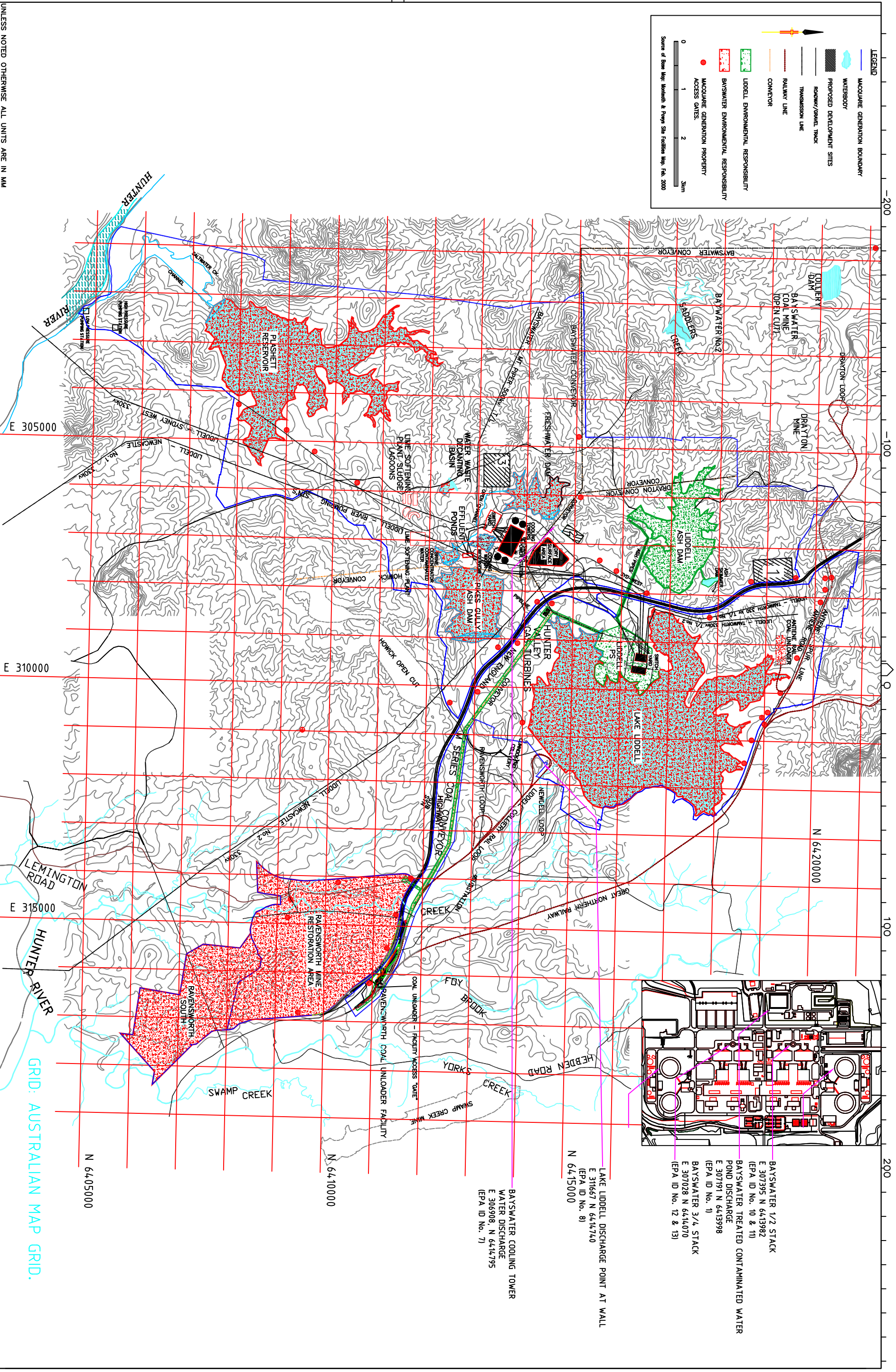


LEGEND

- MACQUARIE GENERATION BOUNDARY
- WATERBODY
- PROPOSED DEVELOPMENT SITES
- ROADWAY/SRAVEL TRACK
- TRANSMISSION LINE
- RAILWAY LINE
- CONVEYOR
- MACQUARIE ENVIRONMENTAL RESPONSIBILITY
- BAYSWATER ENVIRONMENTAL RESPONSIBILITY
- MACQUARIE GENERATION PROPERTY
- ACCESS GATES

Source of Base Map: Bathurst & Pungahy Site Position Map, Feb. 2000

0 1 2 3km



- BAYSWATER 1/2 STACK
E 307395 N 6413982
(EPA ID No. 10 & 11)
- BAYSWATER TREATED CONTAMINATED WATER
POND DISCHARGE
E 307191 N 6413998
(EPA ID No. 1)
- BAYSWATER 3/4 STACK
E 307028 N 6414070
(EPA ID No. 12 & 13)

LAKE LIDDELL DISCHARGE POINT AT WALL
E 31667 N 6414740
(EPA ID No. 8)

N 6415000

BAYSWATER COOLING TOWER
WATER DISCHARGE
E 306908 N 6414795
(EPA ID No. 7)

GRID: AUSTRALIAN MAP GRID.

UNLESS NOTED OTHERWISE ALL UNITS ARE IN MM

AMENDMENTS	
FIRST ISSUE.	
01	DRN TONY MILLER CKD MAL ROTHE DATE 16-DECEMBER-2003 EPA IDENTIFICATION NUMBERS ADDED.
02	DRN TONY MILLER CKD MAL ROTHE DATE 27-FEBRUARY-2004 COOLING TOWER REFERENCES REMOVED. COOLING TOWER WATER DISCHARGE ADDED.
03	DRN TONY MILLER CKD MAL ROTHE DATE 9-MARCH-2004 ADDED ANTIENE RAIL COAL UNLOADER. REMOVED SIGNAL STATION. CHANGED TEXT FROM "COAL UNLOADER FACILITY" TO "RAVENSWORTH COAL UNLOADER FACILITY".
04	DRN CLINTON BAKER CKD MAL ROTHE DATE 2-FEB-2006 INCLUSION OF LOT 2 DP1007536 AT RAVENSWORTH SOUTH.
05	DRN CLINTON BAKER CKD MAL ROTHE DATE 23-JAN-2007 UPDATE LAKE LIDDELL DISCHARGE POINT AT WALL EASTING AND NORTHING.
06	DRN ROY MURCUTT CKD PETER BOWMAN DATE 25-NOV-2009

Macquarie
Generation

REF DRAWINGS	CONTRACT No.	DESIGN	TONY MILLER
CHECKED	ENG	MAL ROTHE	
PASSED	AS SHOWN	APPROVED	
KKS CODING UZI		DESIGNED BY	JOHN NEELY
DATE		DATE	24/12/2004
DRAWING STATUS		NUMBER	BAVS07453
SCALE		AS SHOWN	
PROJECT		MACQUARIE GENERATION	
UNIT		POWER STATION UNIT 1-4	
SURVEY		OPEN SPACE EASEMENTS, SITE SURVEY	
LAYOUT		EPA LICENCE BOUNDARY DETAILS	
SHEET		A2	BW807453
AUDIT		06	

400x566