



Fact Sheet - Liddell Ash Dam

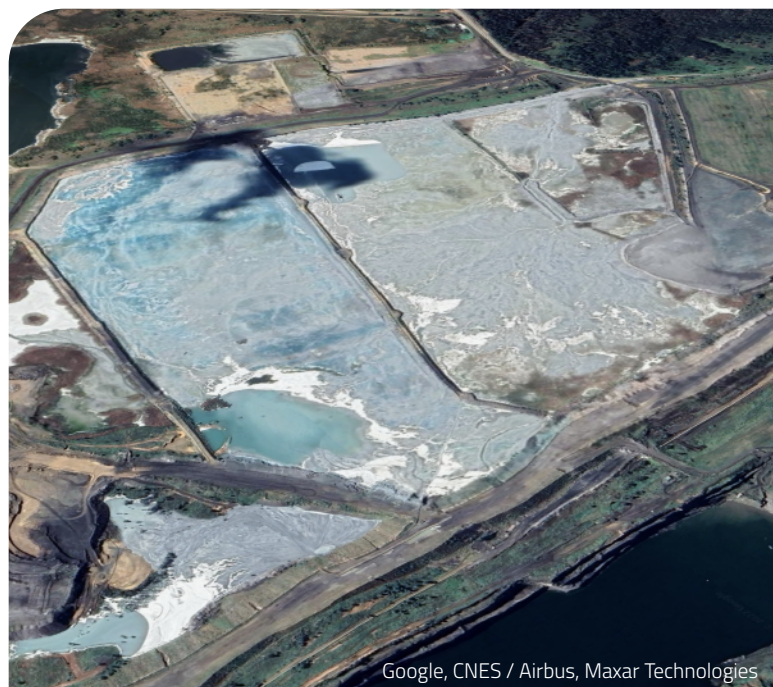
Liddell Closure and Transition

Designed by the Electricity Commission of NSW, the Liddell Ash Dam (LAD) was constructed at Liddell in 1971 to provide an ash storage site for the by-products of burning coal at the Liddell Power Station.

The safe and responsible rehabilitation of the LAD is a key component of the Liddell closure program. The ash, in the form of slurry, will stop being pumped to LAD when the Liddell Power Station ceases operation in 2023. Already 21% of the 390-hectare LAD has been capped (current December 2022) and returned to pasture as part of a progressive rehabilitation program as required under existing consents.

AGL's progressive rehabilitation of the LAD will take approximately seven years and the primary objective during this period is to provide a safe, stable, and non-polluting site where its landform, hydrology, flora and fauna are self-sustaining and compatible with surrounding land. Surface water will be shed from the surface and directed to Lake Liddell as a contained system.

In time, AGL anticipates that future uses of the ash will be economic as a building product feedstock. AGL remains responsible for ongoing management of the area and environmental monitoring.



Google, CNES / Airbus, Maxar Technologies

