



Camden Gas Project Update

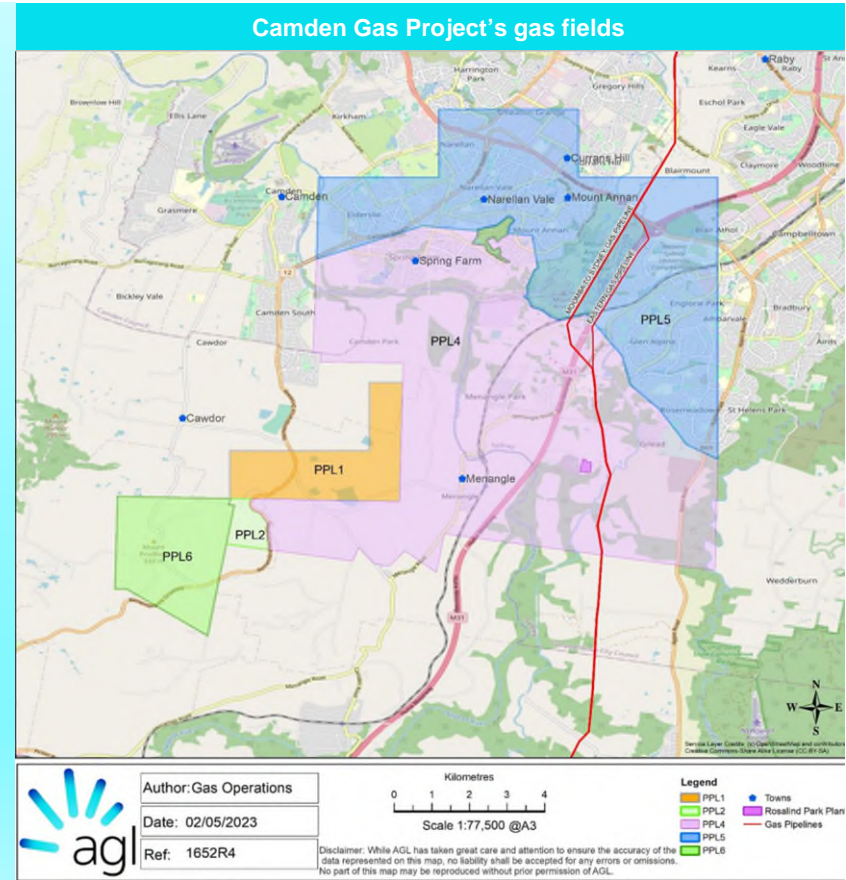
May 2022

Camden Gas Project – Snapshot



Safely Operating since 2001

- ❖ 65 km southwest of Sydney, across 3 Local Government Areas – Camden, Campbelltown and Wollondilly
- ❖ Rosalind Park Gas Plant – gas processing facility, office, workshop
- ❖ High pressure gas line connects output from gas plant to Sydney Jemena Gas Network
- ❖ 144 wells drilled targeting the Bulli and Balgownie coal seams
- ❖ Approximately 100km of low pressure gas gathering lines installed, approximately 27km is still in operation
- ❖ Multiple government regulatory bodies and regulatory requirements
 - ❖ 9x Development Consents
 - ❖ 5x Petroleum Production Leases (PPLs)
 - ❖ 1x Environment Protection Licence
 - ❖ 2x Water Access Licences
 - ❖ 2x Works and Usage Approvals



Rosalind Park Gas Plant – Medhurst Road, Menangle Park



Examples of gas wells



Enclosed Gas Well



Gas well with Pump and Water Tank





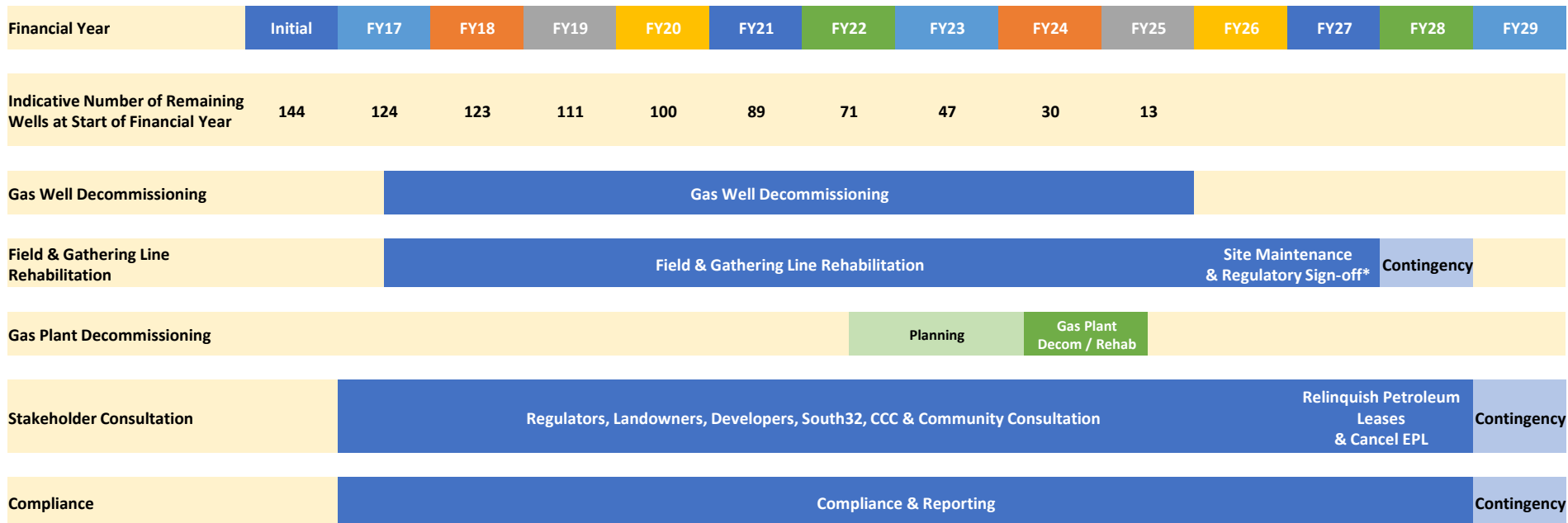
Decommissioning and Rehabilitation



Decommissioning and Rehabilitation

Whole Project Timeline

Camden Rehabilitation - Projected Timeline

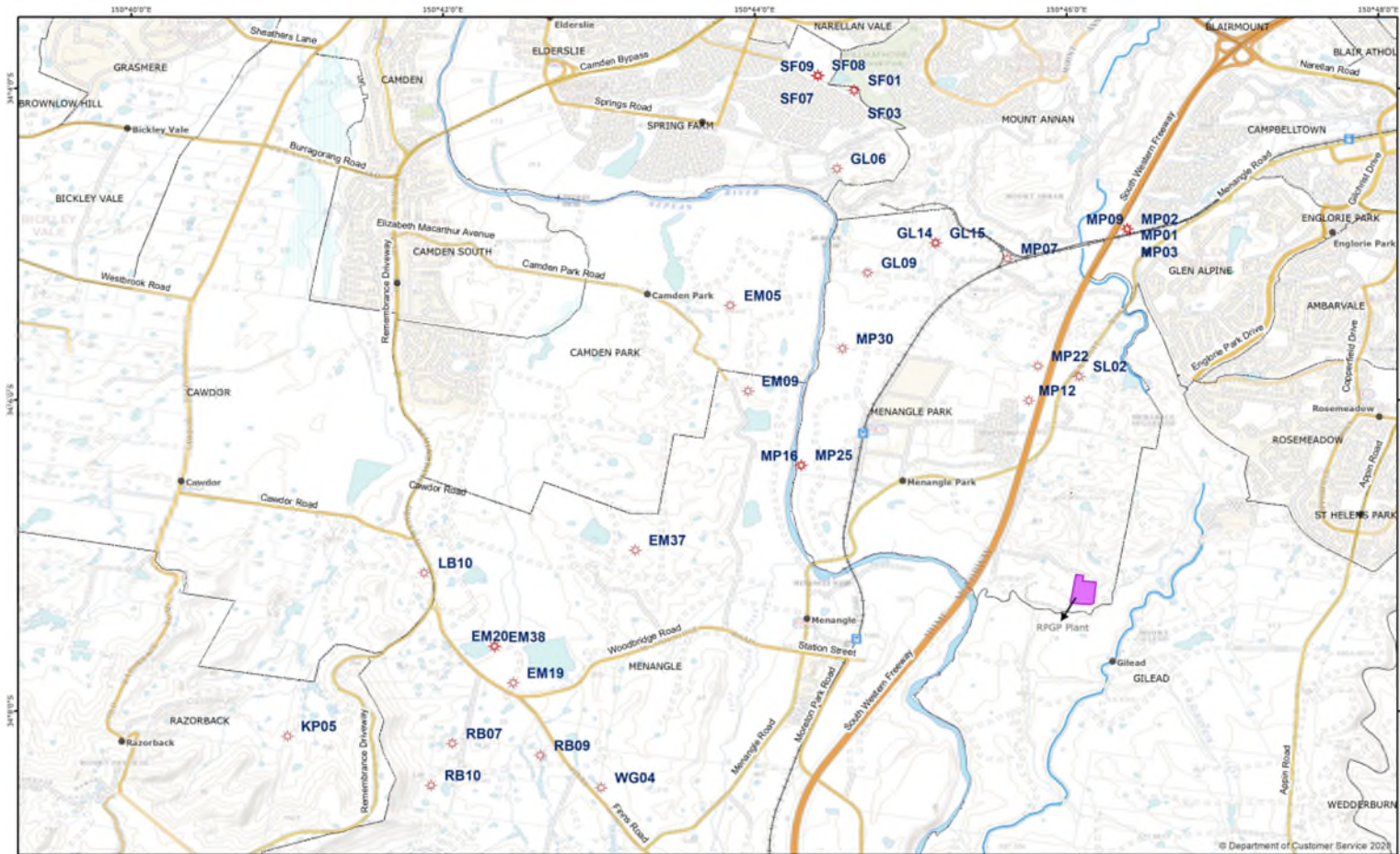


* After site works are complete, wait on regeneration of surface compatible with required land use, and regulatory sign-off - usually takes an additional 12-24 months

Decommissioning and Rehabilitation

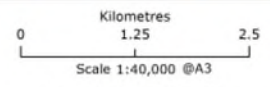
Progressive Decommissioning of Well sites - Status

Production Well Status	Total (31 May 2023)
Drilled (total wells)	144
Production wells	28
Suspended or shut in wells	1
Well in process of decommissioning	3
Wells decommissioning complete	112
Land in process of being rehabilitated or waiting for EPA approval	12
Land fully rehabilitated and returned to landowner / signed off by regulator	100
Wells Removed from PPLs	74



Author: Gas Operations
Date: 14/06/2023
Ref: 2837R8

Camden Gas Project AGL Well Heads



- Legend**
- Wells
 - Rosalind Park Plant
 - Highways
 - Roads
 - Railways
 - Railway Stations
 - Waterbody
 - Suburb/Locality Boundary

Disclaimer: While AGL has taken great care and attention to ensure the accuracy of the data represented on this map, no liability shall be accepted for any errors or omissions. No part of this map may be reproduced without prior permission of AGL.

Sources: AGL Energy Limited, Omnicast, PSMa Data, LPI Imagery

Decommissioning of Well WG01

Finns Road, Menangle



WG01 Prior to Cut and Cap



WG01 Well Head Cut



WG01 Well Head P&A Plate installed

Surface Rehabilitation of Well WG01

November 2020 – August 2021: Returned to grazing land





Community & Stakeholders

Supporting community

More than \$60k contributed to the local community initiatives last year, and over \$40k in Round 1 of FY23



FY22

Animal Trust Society
Bargo Men's Shed
Buxton Community Association
Buxton RFS
Camden Swim Club
Flood Relief donations
Karitane
Kids of Macarthur
Macarthur Australasian Native
One Stop Community Assistance
Orchid Society
Picton Swim Club
Thirlmere RFS

FY23 - Round 1

Australian Wildlife Sanctuary, Bargo
Camden Show
Cawdor Public School P&C
Flood Relief donations
Mother Hubbard's Cupboard, Camden
South West Community Transport
Turning Point Camden
Wilton Anglican Church
Youth Solutions

Ongoing Community investment

AGL is seeking recommendations for initiatives that can make a meaningful impact.



- AGL Camden Gas Project maintains regular communication with a Community Consultative Committee (**CCC**) including representation from local community representatives and the 3 local councils – Camden, Campbelltown & Wollondilly.
- AGL supported the local communities with \$50,000 pa community investment fund over the life of Camden Gas Project. This will be completed in FY23.
- We are committed to community support throughout closure of the Camden Gas Project.
- Looking forward, we will contribute to support community endeavours across the 3 x LGAs
- We welcome ideas from the CCC on meaningful community initiatives that support health, education, community etc.
- Priority is to identify larger projects – i.e. this may be 1-2 projects per LGA.

Next steps:

- AGL is working with the CCC and 3 x LGA councils to form a panel to assess proposed projects in late FY23
- Funds will be allocated to successful recipients in early FY24

Contact



Catherine Mooney

Senior Manager, Stakeholder Relations

AGLCommunity@agl.com.au