

8  
Camden Gas Project

Prepared for AGL Upstream Investments Pty Ltd | \





---

## 2016 - 2017 Groundwater and Surface Water Monitoring Report

Camden Gas Project

Prepared for AGL Upstream Investments Pty Ltd | 13 October 2017

---

Ground Floor, Suite 01, 20 Chandos Street  
St Leonards, NSW, 2065

**T** +61 2 9493 9500

**F** +61 2 9493 9599

**E** [info@emmconsulting.com.au](mailto:info@emmconsulting.com.au)

[www.emmconsulting.com.au](http://www.emmconsulting.com.au)

---

## 2016 - 2017 Groundwater and Surface Water Monitoring Report

Final

Report J17200RP3 | Prepared for AGL Upstream Investments Pty Ltd | 13 October 2017

---

Prepared by **Susan Macolino**

Approved by **Nicola Fry**

Position Hydrogeologist

Position Associate Hydrogeologist

Signature



Signature



Date 13 October 2017

Date 13 October 2017

---

This report has been prepared in accordance with the brief provided by the client and has relied upon the information collected at the time and under the conditions specified in the report. All findings, conclusions or recommendations contained in the report are based on the aforementioned circumstances. The report is for the use of the client and no responsibility will be taken for its use by other parties. The client may, at its discretion, use the report to inform regulators and the public.

© Reproduction of this report for educational or other non-commercial purposes is authorised without prior written permission from EMM provided the source is fully acknowledged. Reproduction of this report for resale or other commercial purposes is prohibited without EMM's prior written permission.

### Document Control

Version	Date	Prepared by	Reviewed by
V1	25/08/2017	Susan Macolino	James Duggleby
V2	13/10/2017	Susan Macolino	James Duggleby



T +61 (0)2 9493 9500 | F +61 (0)2 9493 9599

Ground Floor | Suite 01 | 20 Chandos Street | St Leonards | New South Wales | 2065 | Australia

[www.emmconsulting.com.au](http://www.emmconsulting.com.au)

## Executive Summary

---

AGL Upstream Investments Pty Ltd (AGL) owns and operates the Camden Gas Project (CGP) located in the Macarthur region, 65 km southwest of Sydney, NSW. The CGP has been producing natural gas from coal seams for the Sydney region since 2001 and currently consists of 144 gas wells (of which, 92 were operational on 30 June 2017). The target coal seams are the Bulli and Balgownie Coal Seams within the Illawarra Coal Measures at depths of approximately 550 – 700 metres below ground level (mbgl).

The CGP groundwater monitoring network comprises three nested monitoring sites (11 monitoring bores) targeting the alluvium near the Nepean River, the Ashfield Shale, and the Hawkesbury Sandstone overlying the target coal seams: Denham Court (monitored since 2011), Menangle Park (monitored since June 2013) and Glenlee (monitored since February 2014). Groundwater levels have been recorded at six-hourly intervals and water quality data has been collected on a quarterly basis since installation. Surface water is monitored annually at one monitoring location along the Nepean River next to the Menangle Park site. All bores at the Denham Court site were decommissioned in October 2016 at the landowners request with no water quality monitoring undertaken at this site during the 2016/17 monitoring year and with groundwater level data available until October 2016. Denham Court was located 12 km from the CGP and acted as a control or background monitoring location.

This report presents an assessment of water level and water quality data from the groundwater monitoring network and from the Nepean River for the period up to 30 June 2017, with an emphasis on data obtained during the past 12 months.

The groundwater level in the Nepean River alluvium is shallow and shows a direct response to rainfall and flood events during the monitoring period. Groundwater levels are shallow (approximately 8 mbgl) and follow similar trends in each of the screened Hawkesbury Sandstone water bearing zones (defined as upper, middle, and lower). Groundwater levels are deep (approximately 80 mbgl) in the Ashfield Shale and show no apparent response to rainfall over the monitoring period. There is no apparent response to individual rainfall events over the monitoring period at the Denham Court and Glenlee sites, while a clear response to rainfall and flood events can be observed at the three uppermost monitoring bores at the Menangle Park site. Groundwater levels during the 2016/17 monitoring year were comparable to groundwater levels recorded during previous monitoring years.

Groundwater sampled from the alluvium at the Menangle Park site is fresh to marginally saline with generally low dissolved metal concentrations. Groundwater sampled from the Hawkesbury Sandstone is fresh to marginal at the Menangle Park site and slightly saline at the Glenlee site. Dissolved metal concentrations are generally low and minor detections of hydrocarbons were present at the two monitoring sites. Dissolved methane was detected at all monitoring bores, although concentrations at the Menangle Park were comparable to the former control site at Denham Court (sampled in previous monitoring years). Low concentrations of dissolved ethane and propane were detected at the Glenlee site, and toluene was detected at all lower Hawkesbury Sandstone monitoring bores.

Groundwater quality during the 2016/17 monitoring year was overall comparable to groundwater quality as measured during the previous monitoring years.

The Nepean River water is characterised as fresh, neutral pH and dissolved metal concentrations were comparably lower than occurring in groundwater in the alluvium and underlying Hawkesbury Sandstone, with exceptions to copper, manganese and zinc concentrations. Ammonia concentrations in the Nepean River did not exceed the ANZECC (2000) guideline value during the 2016/17 monitoring year. Dissolved methane concentrations were low and no hydrocarbons were detected. The water quality of the Nepean River was overall comparable to that of the sample collected in October 2016.

Based on assessment of the available data, there are no observable impacts to groundwater levels or quality that could be attributable to the CSG operations. There is also no evidence of connectivity between the shallower monitored zones and the coal seams. This is in agreement with the conceptual model (Parsons Brinckerhoff 2011) that indicates the presence of extensive and thick claystone formations (aquitards and aquicludes) between the Hawkesbury Sandstone and coal seams restricting upward depressurisation and impeding the vertical flow of groundwater.



# Table of contents

---

<b>Executive Summary</b>	E.1
<b>Chapter 1</b> Introduction	1
1.1 Scope of works for the 2016/17 monitoring program	1
<b>Chapter 2</b> Site characterisation	3
2.1 Rainfall	3
2.2 Surface hydrology	4
2.3 Geological setting	5
2.4 Hydrogeological setting	8
<b>Chapter 3</b> Monitoring program	11
3.1 Monitoring network	11
3.2 Water level monitoring	13
3.2.1 Groundwater levels	13
3.2.2 Surface water levels	13
3.3 Water quality monitoring	13
3.3.1 Sampling techniques	14
3.3.2 Chemical analysis of water	15
3.3.3 Quality assurance and quality control (QA/QC)	16
<b>Chapter 4</b> Groundwater levels	17
4.1 Temporal trends	19
4.1.1 Alluvium	19
4.1.2 Ashfield Shale	19
4.1.3 Hawkesbury Sandstone	19
4.2 Spatial trends in the Hawkesbury Sandstone	20
4.3 Groundwater-surface water interactions	20
4.4 Vertical gradients	20
<b>Chapter 5</b> Water quality	23
5.1 Groundwater quality	23
5.1.1 Field parameters	23
5.1.2 Major ions	24
5.1.3 Dissolved metals	26
5.1.4 Nutrients	27
5.1.5 Dissolved gasses	27
5.1.6 Dissolved hydrocarbons	28
5.2 Surface water quality	29

---

## Table of contents *(Cont'd)*

---

Chapter 6	Discussion and conclusions	30
References		33
Glossary		36
Abbreviations		41
Units		43

---

### Tables

2.1	Summary of regional Permo-Triassic geological stratigraphy	5
2.2	Hydrogeological units within the CGP area	8
3.1	Groundwater monitoring bore details	11
3.2	Summary of current water level monitoring locations and data collection periods	13
3.3	Groundwater quality program	14
3.4	Analytical suite	15

### Figures

1.1	Groundwater and surface water monitoring locations Camden Gas Project	2
2.1	Cumulative deviation from annual mean rainfall	3
2.2	Monthly rainfall for the monitoring period (2011 – 2017)	4
2.3	Surface geology	7
3.1	Nested groundwater monitoring bores at the Denham Court, Glenlee and Menangle Park sites	12
4.1	Groundwater levels at the Denham Court site	17
4.2	Groundwater levels at the Menangle Park site	18
4.3	Groundwater levels at the Glenlee site	18
5.1	EC time series for CGP monitoring bores and Nepean River sample	23
5.2	pH time series for CGP monitoring bores and Nepean River sample	24
5.3	Major ion chemistry of groundwater for CGP monitoring bores and Nepean River sample (2016/17 monitoring year)	25
5.4	Dissolved metal concentrations in groundwater for CGP monitoring bores the Nepean River sample (2016/17 monitoring year)	26
5.5	Ammonia versus nitrate concentrations in groundwater for CGP monitoring bores and the	



## Figures

	Nepean River sample (2016/17 monitoring year)	27
5.6	Dissolved methane time series for CGP monitoring bores and Nepean River samples	28

## Appendices

A	Groundwater hydrographs
B	Water quality summary table
C	ALS laboratory reports



# 1 Introduction

AGL Upstream Investments Pty Ltd (AGL) owns and operates the Camden Gas Project (CGP) located in the Macarthur region, 65 km southwest of Sydney, NSW. The CGP has been producing natural gas from coal seams for the Sydney region since 2001 and currently consists of 144 gas wells (of which, 92 were operational on 30 June 2017) within the Stage 1 and Stage 2 areas (Figure 1.1). The target coal seams are the Bulli and Balgownie Coal Seams within the Illawarra Coal Measures at depths of approximately 550 – 700 metres below ground level (mbgl).

EMM Consulting Pty Ltd (EMM) was engaged by AGL to compile groundwater and surface water monitoring results collected between 1 July 2016 and 30 June 2017 (the 2016/17 monitoring year) and to analyse with reference to the CGP activities. Installation of a dedicated water monitoring network of 11 monitoring bores occurred between October 2011 and February 2014. The groundwater monitoring network comprises dedicated monitoring bores in the alluvium, the Ashfield Shale, and the Hawkesbury Sandstone. The collection of groundwater level and groundwater quality data commenced in October 2011. Groundwater levels have been recorded at six-hourly intervals and, following one initial sample in November 2011, water quality data was collected on a quarterly basis between May 2013 and April 2015. From April 2015 onwards, water quality data has been collected at six-monthly intervals. In addition, one surface water monitoring location is sampled annually for water quality. This report contains an evaluation of the data obtained during the 2016/17 monitoring year, with comparison to the data obtained during the previous monitoring years (EMM 2016; Parsons Brinckerhoff 2012, 2013a, 2014a, 2014b and 2015e).

Monitoring was undertaken at three sites during the 2016/17 monitoring year: Menangle Park and Glenlee located within the existing CGP Stage 1 and 2 areas; and the Denham Court control site located 12 km from the CGP within the wider Camden-Campbelltown area, NSW (Figure 1.1). The monitoring bores at the Denham Court site were decommissioned by AGL at the landowners request in early October 2016 and are no longer monitored.

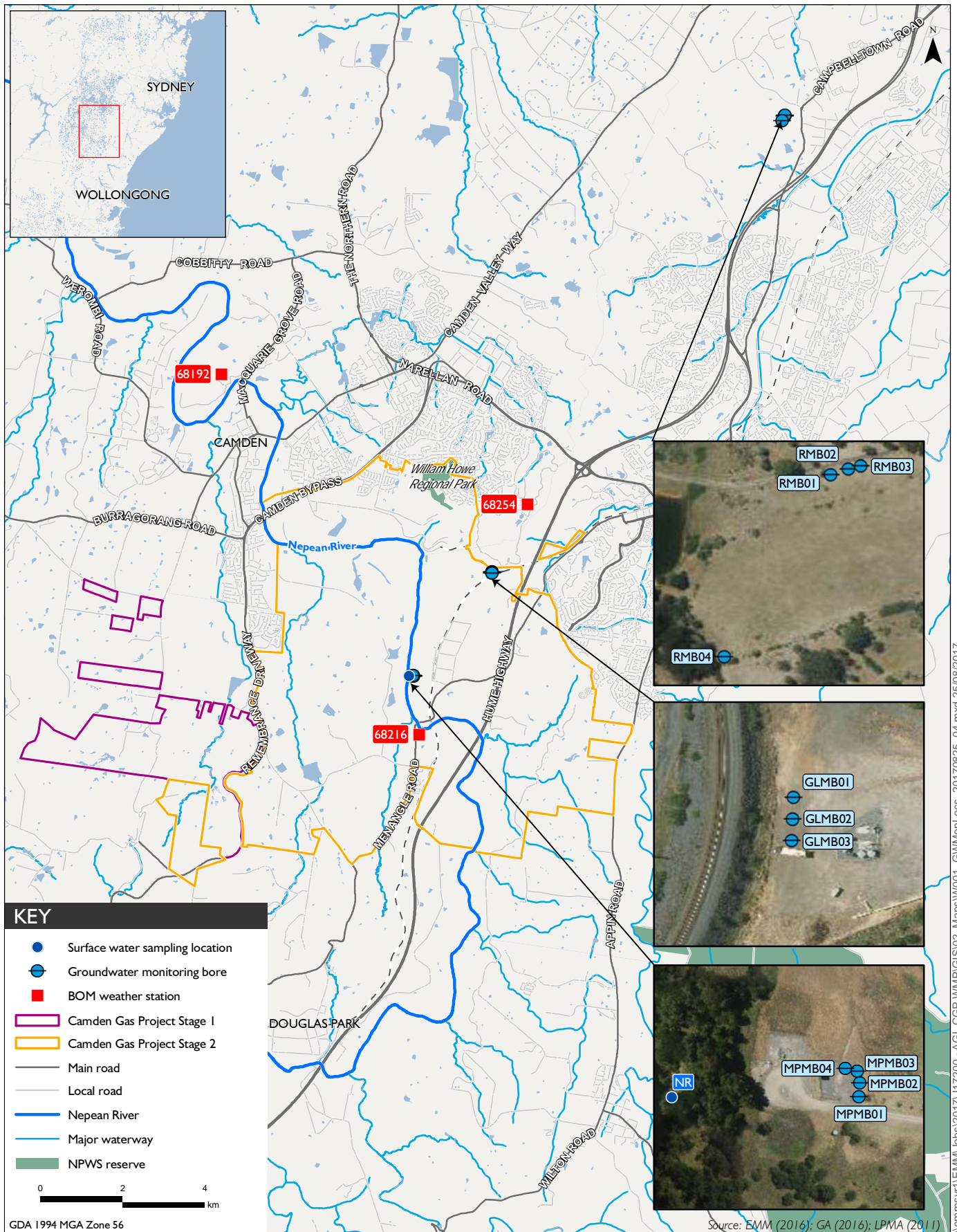
The objective of the groundwater monitoring program is to provide water levels and water quality attributes for each of the monitored groundwater systems of the region, in areas within and distant from the currently operating CGP.

## 1.1 Scope of works for the 2016/17 monitoring program

This report presents and interprets groundwater level data collected at six-hourly intervals and groundwater quality data collected since monitoring began at each of the established sites, with emphasis on the data obtained during the 2016/17 monitoring year.

The scope of works was to:

- conduct groundwater monitoring, including six-hourly groundwater level measurements and two groundwater quality sampling events testing for field parameters, major cations and anions, dissolved metals, nutrients, dissolved methane and hydrocarbons;
- conduct surface water quality sampling on one occasion (October 2016) at one location (the Nepean River near the Menangle Park site as shown on Figure 1.1);
- analyse and interpret water level and hydrochemical results with reference to the conceptual model where relevant; and
- establish whether there are any observable impacts from CSG activities within the shallow aquifers.



### Groundwater monitoring locations

Camden Gas Project  
 2016-2017 groundwater and surface water monitoring report  
 Figure 1.1



## 2 Site characterisation

### 2.1 Rainfall

The nearest Bureau of Meteorology (BoM) weather station with consistent historical climate measurements is located at Camden airport (BoM site number 68192), approximately 2.5 km northwest of the Stage 2 area (Figure 1.1). Mean temperatures at Camden airport range from 17.3°C in July to 29.6°C in January (based on records from 1971 to 2017). The average annual rainfall is 793.3 mm (based on records from 1972 to 2017). On average, July receives the least rain, with a mean rainfall of 36.2 mm, while February receives the most rain, with a mean of 98.5 mm (BoM 2017).

The long-term, annual cumulative deviation from mean (CDFM) rainfall for Camden airport is plotted in Figure 2.1. Annual rainfall data for BoM site number 68216 (located approximately 10 km southeast from the Camden airport 68192 station) is presented from 2009 onwards as rainfall records at Camden airport were incomplete for that period. The long-term CDFM is generated by subtracting the long-term average annual rainfall for the recorded period from the actual annual rainfall and then accumulating these residuals over the assessment period. Periods of below average rainfall are represented as downward trending slopes while periods of above average rainfall are represented as upward trending slopes.

The cumulative deviation plot for Camden airport (Figure 2.1) shows a relatively wet period between 1972 and 1992, followed by a relatively dry period between 1998 and 2007. From 2007 onwards the rainfall has been typically close to the mean rainfall of 776 mm per year.

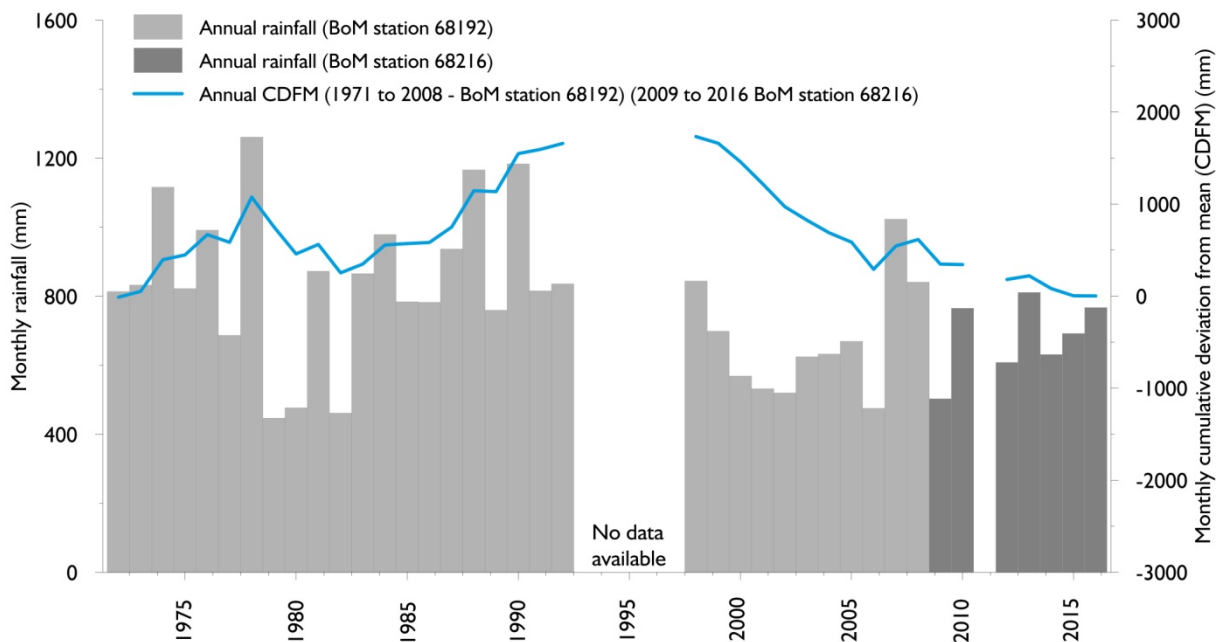
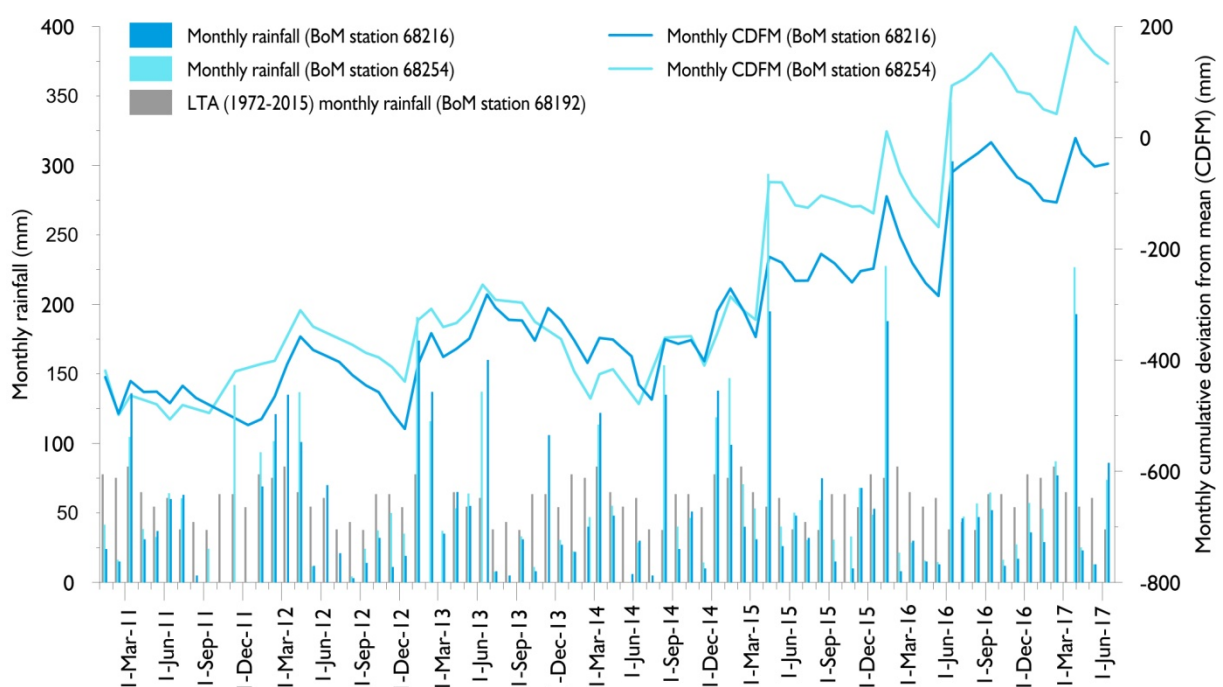


Figure 2.1 Cumulative deviation from annual mean rainfall

The monitoring bore sites are separated by up to a distance of ~4 km and therefore groundwater level data for each site have been compared with rainfall data from the closest BoM station (Figure 1.1) as follows:

- Menangle Park: 68216 Menangle Bridge; and
- Glenlee: 68254 Mount Annan Botanic Garden.

The rainfall characteristics are broadly similar between these BoM stations during the monitoring period, as presented in Figure 2.2. Total monthly rainfall for this monitoring period was overall higher than the long-term average.



**Figure 2.2 Monthly rainfall for the monitoring period (2011 – 2017)**

## 2.2 Surface hydrology

The CGP includes two catchment areas: the Hawkesbury Nepean Catchment and the Sydney Metropolitan Catchment. The major surface hydrology features in the CGP are the Nepean River and its tributaries, which meander in a south to north direction within the project area; and the Georges River, which flows in a northerly direction, in the south-east of the project area.

Small farm dams are common in rural areas and provide water for stock, limited garden and irrigation purposes. Dams are replenished by rainfall and runoff, although some seepage flow through the weathered soil profiles occurs after long wet periods. Dams and seepage flows are not related to the regional groundwater systems. There are no known springs in the CGP area.

## 2.3 Geological setting

The CGP is part of the Southern Coalfield of the Sydney Geological Basin. The Basin is primarily a Permo-Triassic sedimentary rock sequence (Parkin 2002) and is underlain by undifferentiated sediments of Carboniferous and Devonian age. The stratigraphy of the CGP in the Camden-Campbelltown area is summarised in Table 2.1. The geology and structure of the CGP is shown on Figure 2.3.

**Table 2.1 Summary of regional Permo-Triassic geological stratigraphy**

Period	Group	Sub-group	Formation	Description	Average thickness (m) <sup>1</sup>	
Quaternary			Alluvium	Quartz and lithic 'fluvial' sand, silt and clay.	<20	
Tertiary			Alluvium	High level alluvium.		
Triassic	Wianamatta Group		Bringelly Shale	Shale, carbonaceous claystone, laminate, lithic sandstone, rare coal.	80 (top eroded)	
			Minchinbury Shale	Fine to medium-grained lithic sandstone.	-	
			Ashfield Shale <sup>2</sup>	Black to light grey shale and laminate (Bembrick <i>et al.</i> 1987).	-	
			Mittagong Formation	Dark grey to grey alternating beds of shale laminate, siltstone and quartzose sandstone (Alder <i>et al.</i> 1991).	11	
	Narrabeen Sub-group	Gosford Sub-group		Hawkesbury Sandstone	Massive or thickly bedded quartzose sandstone with siltstone, claystone and grey shale lenses up to several metres thick (Bowman 1974; Moffitt 2000).	173
				Newport Formation	Fine-grained sandstone (less than 3 m thick) interbedded with light to dark grey, fine-grained sandstones, siltstones and minor claystones (Bowman 1974).	35
			Garie Formation	Cream, massive, kaolinite-rich pelletal claystone, which grades upwards to grey, slightly carbonaceous claystone containing plant fossils at the base of the Newport Formation (Moffitt 2000).	8	
		Clifton Sub-group		Bald Hill Claystone <sup>2</sup>	Massive chocolate coloured and cream pelletal claystones and mudstones, and occasional fine-grained channel sand units (Moffitt 2000).	34
				Bulgo Sandstone	Thickly bedded sandstone with intercalated siltstone and claystone bands up to 3 m thick (Moffitt 2000).	251
				Stanwell Park Claystone <sup>2</sup>	Red-green-grey shale and quartz sandstone (Moffitt 1999).	36
				Scarborough Sandstone	Quartz-lithic sandstone, pebbly in part (Moffitt 1999).	20
	Wombarra Claystone <sup>2</sup>	Grey shale and minor quartz-lithic sandstone (Moffitt 1999).	32			



**Table 2.1 Summary of regional Permo-Triassic geological stratigraphy**

Period	Group	Sub-group	Formation	Description	Average thickness (m) <sup>1</sup>
Permian		Sydney sub-group	Bulli Coal Seam		4
			Loddon Sandstone		12
			Balmain Coal Member		24
			Balgownie Coal Seam	Coal interbedded with shale, quartz-lithic sandstone, conglomerate, chert, torbanite seams and occasionally carbonaceous mudstone (Moffitt 2000).	2
			(Remaining Sydney Subgroup)		
		Cumberland Subgroup			
	Shoalhaven Group			Sandstone, siltstone, shale, polymictic conglomerate, claystone; rare tuff, carbonate, evaporate.	
Palaeozoic	Lachlan Fold Belt			Intensely folded and faulted slates, phyllites, quartzite sandstones and minor limestones of Ordovician to Silurian age (Moffitt 2000).	

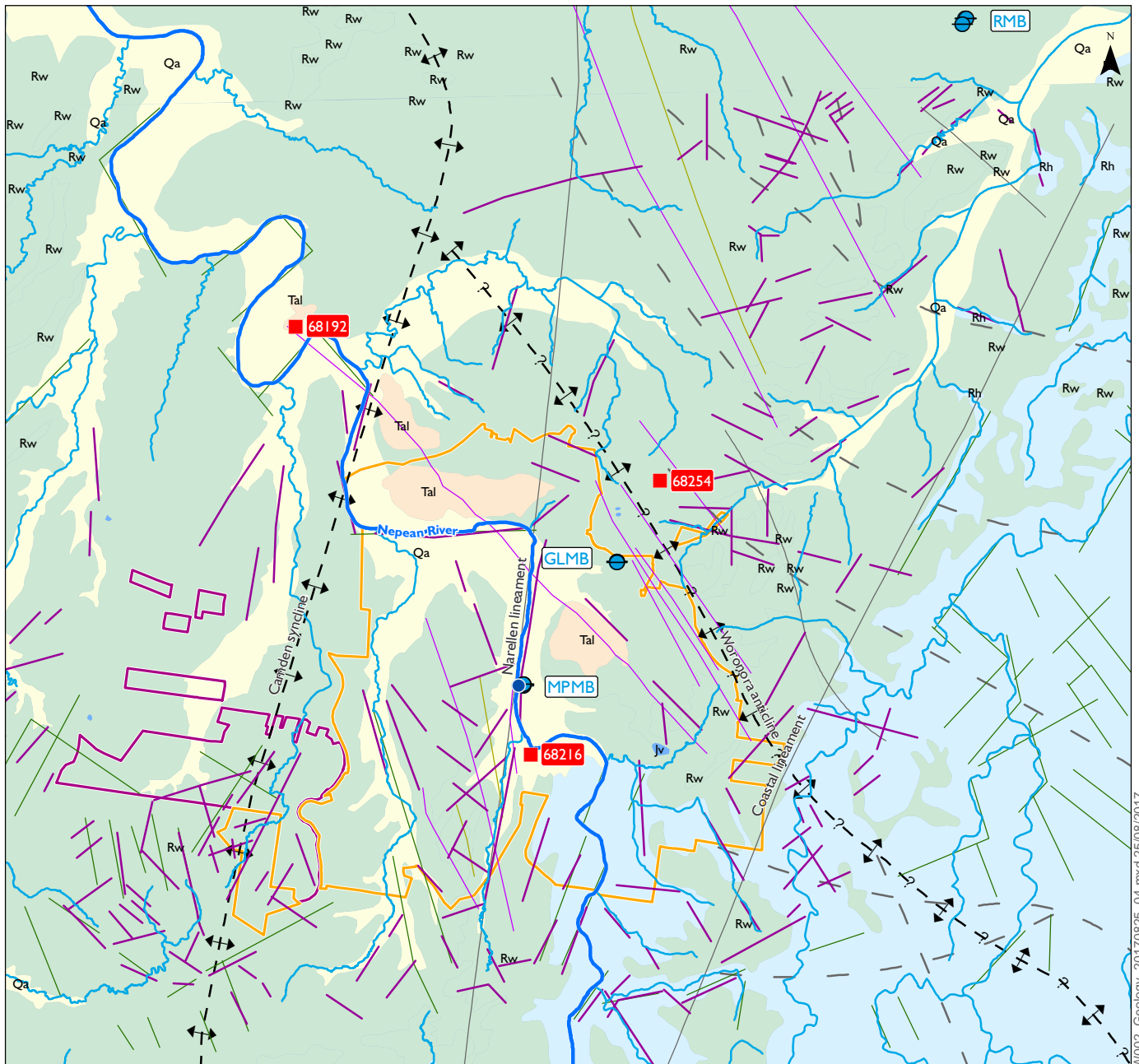
Notes: 1. Average thickness from available well data within CGP (AGL 2013).  
2. Aquitard or aquiclude.

The Illawarra Coal Measures is the economic sequence of interest for CSG development in the area, and consists of interbedded sandstone, shale and coal seams, with a thickness of approximately 300 m. The upper sections of the Permian Illawarra Coal Measures (Sydney Subgroup) contain the major coal seams: Bulli Coal Seam, Balgownie Coal Seam, Wongawilli Coal Seam, and Tongarra Coal Seam. The seams targeted for CSG production within the CGP are the Bulli and Balgownie coal seams, both of which are 2 m to 5 m thick within the CGP.

The Illawarra Coal Measures is overlain by Triassic sandstones, siltstones and claystones of the Narrabeen Group and the Hawkesbury Sandstone. Overlying the Hawkesbury Sandstone is the Triassic Wianamatta Group shales which comprise the majority of the surficial geology (where thin alluvial deposits are not present).

Structurally, the CGP area and surrounds are dominated by the north-northeast plunging Camden Syncline, which is a broad and gentle warp structure (Alder et al 1991 and Bray et al 2010). The Camden Syncline is bounded in the west and truncated in the southwest by the north-south trending Nepean Structural Zone, part of the Lapstone Structural Complex.

The CGP is relatively unaffected by major faulting apart from a set of NW-NNW trending faults associated with the Lapstone Monocline Structure (Alder et al 1991 and Blevin et al 2007). These faults have been identified from exploration and 2D seismic studies and they have been identified as high-angle, low to moderate displacement normal faults (Blevin et al 2007). Many of these features intersect coal seams however very few, if any, affect the entire stratigraphic sequence and display no expression at surface.



**KEY**

<ul style="list-style-type: none"> <li><span style="color: blue;">●</span> Surface water sampling location</li> <li><span style="color: blue;">⊙</span> Groundwater monitoring bore</li> <li><span style="color: red;">■</span> BOM weather station</li> <li><span style="border: 1px solid purple; display: inline-block; width: 20px; height: 10px;"></span> Camden Gas Project Stage 1</li> <li><span style="border: 1px solid orange; display: inline-block; width: 20px; height: 10px;"></span> Camden Gas Project Stage 2</li> </ul>	<p><b>Structures</b></p> <ul style="list-style-type: none"> <li><span style="color: purple;">—</span> Certain fault (AGL Energy)</li> <li><span style="color: orange;">—</span> Possible fault (AGL Energy)</li> <li><span style="color: grey;">—</span> Fault (Geology 100k DPI / Mauger et al; Southern Coal Fields map)</li> <li><span style="color: grey;">—</span> Interpreted Fault (Geology 100k DPI / Mauger et al; Southern Coal Fields map)</li> <li><span style="color: black;">—</span> Lineament (CSIRO 1:80,000 Landsat interpreted fracture analysis)</li> <li><span style="color: purple;">—</span> Lineaments (air photo interpreted; CSIRO)</li> </ul> <p> <span style="color: black;">↕</span> - - - - - Syncline  <span style="color: black;">↕</span> - ? - - - - - Anticline         </p>	<p><b>250k Geology</b></p> <ul style="list-style-type: none"> <li><span style="color: blue;">■</span> Jv - Basalt, dolerite &amp; volcanic breccia</li> <li><span style="color: yellow;">■</span> Qa - Quaternary alluvium</li> <li><span style="color: orange;">■</span> Tal - High level gravels</li> <li><span style="color: green;">■</span> Rw - Bringelly Shale, Minchinbury Sandstone &amp; Ashfield Shale</li> <li><span style="color: lightblue;">■</span> Rh - Hawkesbury Sandstone</li> </ul>
--	---	--

0 2 4 km

GDA 1994 MGA Zone 56

Source: DPI (2016); EMM (2016); GA (2016); LPMA (2011)

I:\emmsvr\1\EMM\Jobs\2017\117200 - AGL CGP WMP\GIS\02\_Maps\W002\_Geology\_20170825\_04.mxd 25/08/2017



**Surface geology**  
 Camden Gas Project  
 2016-2017 groundwater and surface water monitoring report  
 Figure 2.3

## 2.4 Hydrogeological setting

The Southern Coalfield is located within the area covered by the Water Sharing Plan for the Greater Metropolitan Region Groundwater Sources. The CGP is located across two porous rock water sources – the Sydney Basin Nepean water source to the south and the Sydney Basin Central water source to the north (NOW, 2011). The recognised hydrogeological units within the CGP are shown in Table 2.2.

**Table 2.2 Hydrogeological units within the CGP area**

Hydrogeological unit	Aquifer type
Alluvium	Unconfined aquifer
Ashfield Shale (Wianamatta Group)	Aquitard or unconfined/perched
Hawkesbury Sandstone	Unconfined/semi-confined aquifer
Bald Hill Claystone (Narrabeen Group)	Aquitard/aquiclude
Bulgo Sandstone (Narrabeen Group)	Confined aquifer
Stanwell Park Claystone (Narrabeen Group)	Aquitard/aquiclude
Scarborough Sandstone (Narrabeen Group)	Confined aquifer
Wombarra Claystone (Narrabeen Group)	Aquitard/aquiclude
Illawarra Coal Measures	Confined water bearing zones

Alluvium occurs along the floodplain of the Nepean River and its tributaries. Alluvial deposits are generally thin, discontinuous (except along the Nepean River) and relatively permeable. The unconfined groundwater systems within the alluvium are responsive to rainfall and stream flow and form a minor beneficial groundwater system. There are also small terrace areas of Tertiary alluvium within the CGP area that contain localised groundwater systems of variable quality (Figure 2.3).

The Ashfield Shale (which outcrops across the majority of the CGP) is generally of low permeability and yield; however small water bearing zones are sometimes present. Water is typically brackish to saline, especially in low relief areas of western Sydney (due to the marine depositional environment of the shales) (Old 1942). Average bore yields are 1.3 litres per second (L/s) (AGL 2013).

The Hawkesbury Sandstone and Narrabeen Group form part of an extensive generally semi-confined regional groundwater system within the Sydney Basin sequence. The Hawkesbury Sandstone is more widely exploited for groundwater than the overlying and underlying formations, being of generally higher yield, better water quality and either outcropping or buried to shallow depths over the basin. Groundwater flow within the Hawkesbury Sandstone and Narrabeen Group groundwater systems at a regional scale has a major horizontal component, due to the alternation of sheet and massive facies, with some vertical leakage. The Hawkesbury Sandstone and Narrabeen Group are characterised by dual porosity. The primary porosity is imparted by connected void space between sand grains and the secondary porosity is due to the interconnected rock defects such as joints, fractures, faults and bedding planes. Superior bore yield in the sandstone groundwater systems of the Hawkesbury Sandstone is often associated with major fractures or a high fracture zone density, and yields of up to 40 L/s have been recorded in bores intercepting these zones within deformed areas of the Sydney Basin (McLean and Ross 2009). Typically within the CGP area bore yields within the Hawkesbury Sandstone rarely exceed 2 L/s (SCA 2007 and Ross 2014). The Narrabeen Group aquifer is generally not used as a water source as it is considered to be poorer quality and lower permeability compared to the overlying Hawkesbury Sandstone groundwater systems (Madden 2009).

There is a lack of major fracturing and fault systems intersecting the Hawkesbury Sandstone within the CGP. Yields in the Hawkesbury Sandstone are highest and salinities are freshest south of the Nepean River due to the proximity to recharge areas. North of the Nepean River, the groundwater within the Hawkesbury Sandstone is characterised by higher salinity, becoming moderately saline. Groundwater is used for irrigation and domestic purposes to the south and immediately to the north of the Nepean River; however, further north of the river, groundwater quality is typically only suitable for stock (AGL 2013).

The coal seams present in the Illawarra Coal Measures are both regionally and locally minor water bearing zones. Due to the greater depth of burial of the coal measures and fine-grained nature of the sedimentary rocks, the permeability is generally lower than the overlying sandstone aquifers. Recharge to the Permian water bearing zones is likely to occur where formations are outcropping, which occurs at a significant distance to the south of the CGP. Salinity of the water bearing zones is typically brackish to moderately saline.

Within the CGP, there is limited rainfall recharge to the Ashfield Shale with most rainfall generating runoff and overland flow. Some leakage through the Ashfield Shale into the Hawkesbury Sandstone is expected where there is adequate fracture spacing, however, it is anticipated that most recharge to the sandstone aquifers occurs via lateral groundwater through-flow from upgradient and updip areas to the south. There is insufficient data within the CGP to define local flow paths and natural discharge zones; however, regionally, groundwater flow is predominantly towards the north or northeast, eventually discharging via the Georges, Parramatta or Hawkesbury River systems, and ultimately offshore to the east. Locally, there may be a small base flow or interflow discharge component to local stream headwaters during wet periods; however groundwater-surface water interactions are not well defined within the area (Parsons Brinckerhoff 2010).



## 3 Monitoring program

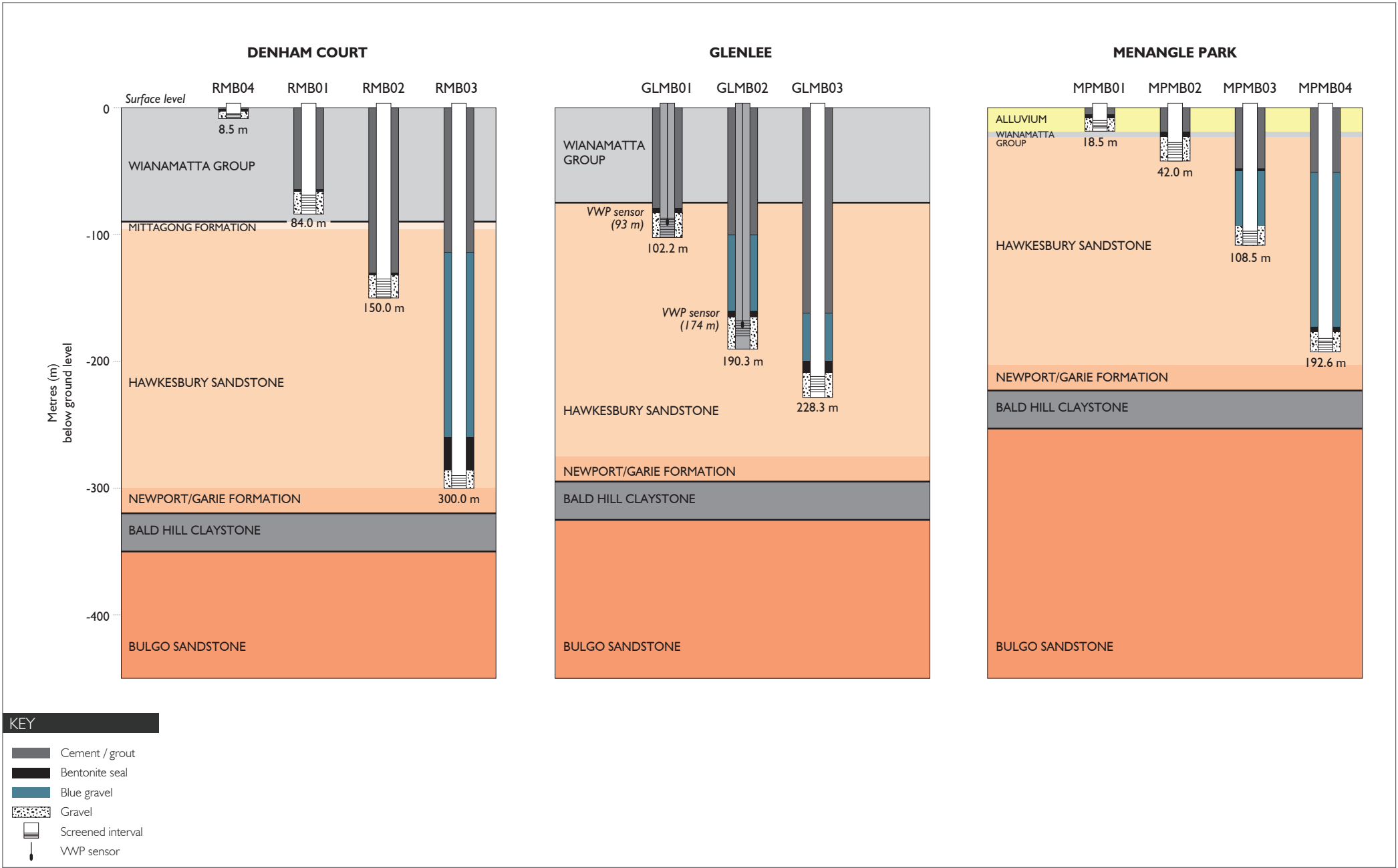
### 3.1 Monitoring network

Construction details for the 11 monitoring bores within the CGP area are presented in Table 3.1 and Figure 3.1.

**Table 3.1** Groundwater monitoring bore details

Monitoring bore	Location	Total depth (mbgl)	Screened depth (mbgl)	Lithology	Formation
RMB01	Denham Court	84.0	69.0 – 81.0	Siltstone	Ashfield Shale
RMB02	Denham Court	150.0	135.0 – 147.0	Sandstone	Hawkesbury Sandstone (upper)
RMB03	Denham Court	300.0	290.0 – 299.0	Sandstone	Hawkesbury Sandstone (lower)
RMB04	Denham Court	8.5	4.5 – 7.5	Clay/siltstone	Ashfield Shale (weathered)
MPMB01	Menangle Park	18.5	10.0 – 16.0	Clay	Alluvium
MPMB02	Menangle Park	42.0	27.4 – 39.4	Sandstone	Hawkesbury Sandstone (upper)
MPMB03	Menangle Park	108.5	97.0 – 106.0	Sandstone	Hawkesbury Sandstone (middle)
MPMB04	Menangle Park	192.6	182.6 – 191.6	Sandstone	Hawkesbury Sandstone (lower)
GLMB01	Glenlee	102.2	87.0 – 99.0 <sup>1</sup>	Sandstone	Hawkesbury Sandstone (upper)
GLMB02	Glenlee	190.3	168.0 – 180.0 <sup>1</sup>	Sandstone	Hawkesbury Sandstone (middle)
GLMB03	Glenlee	228.3	212.0 – 224.0	Sandstone	Hawkesbury Sandstone (lower)

Notes: 1. Monitoring bores GLMB01 and GLMB02 were converted to vibrating wire piezometers (VWP) on 12 March 2015 to maintain borehole integrity (Parsons Brinckerhoff 2015b); the VWP sensors are installed at 93 m bgl and 174 m bgl respectively.  
2. Monitoring bores RMB01-04 were decommissioned early October 2016 and are no longer monitored.  
mbgl – metres below ground level.



Nested groundwater monitoring bores at the Denham Court, Glenlee, and Menangle Park sites

Camden Gas Project

2016 – 2017 Water Monitoring Report

Figure 3.1





## 3.2 Water level monitoring

### 3.2.1 Groundwater levels

Pressure transducers (Solinst Levellogger (M30) dataloggers) are suspended from a galvanised steel wire in the water column and programmed to record a groundwater level every six hours. To verify the level recorded by the dataloggers, manual measurements are recorded periodically using an electronic dip meter. The monitoring start date of the datalogger data at each monitoring bores is shown in Table 3.2.

A barometric logger installed above the water table at monitoring bore MPMB01 records changes in atmospheric pressure. Data from this logger is used to correct for the effects of changing barometric pressure on water level loggers in the adjacent monitoring bores.

**Table 3.2 Summary of current water level monitoring locations and data collection periods**

Monitoring locations	Monitoring period
Denham Court (RMB01, RMB02, RMB03, RMB04)	November 2011 (June 2013 for RMB04) – October 2016
Menangle Park (MPMB01, MPMB02, MPMB03, MPMB04)	June 2013 – present
Glenlee (GLMB01, GLMB02, GLMB03)	February 2014 – present

The vibrating wire piezometer (VWP) sensors at GLMB01 and GLMB02, which were installed in March 2015, have not stabilised since installation. As such, the data has not been presented in this report; however, groundwater level data that was collected from these bores prior to their conversion to VWPs is included in this report.

### 3.2.2 Surface water levels

Water levels in the Nepean River are monitored by the BoM (gauging station 68216) using automatic dataloggers close to the Menangle Park site (Figure 1.1). These water levels have been included in the hydrograph for the Menangle Park site for comparison (refer to Section 4 Groundwater levels; Figure 4.2). The river height data is real-time operational data from automated telemetry systems and has been processed to remove erroneous data.

## 3.3 Water quality monitoring

Groundwater sampling has been undertaken on 11 occasions at Denham Court (since November 2011), 11 occasions at Menangle Park (since August 2013) and 9 occasions at Glenlee (since February 2014) with details provide in Table 3.3. Two sampling events occurred in the 2016/17 monitoring year at Menangle Park and Glenlee (GLMB03).

Surface water quality sampling was undertaken on one occasion (18 October 2016) at the Nepean River site next to the Menangle Park groundwater monitoring site.

Sampling of groundwater and surface water was undertaken by Parsons Brinckerhoff from October 2011 through to April 2016. Sampling in the 2016/17 monitoring year was undertaken by EMM.

**Table 3.3 Groundwater quality program**

Sampling event	Denham Court	Menangle Park	Glenlee	Reference report
November 2011	√ <sup>1</sup>	-	-	Parsons Brinckerhoff (2012)
May 2013	√ <sup>1</sup>	-	-	Parsons Brinckerhoff (2013a)
August 2013	√ <sup>2</sup>	√ <sup>3</sup>	-	Parsons Brinckerhoff (2013c)
November 2013	√ <sup>4</sup>	√	-	Parsons Brinckerhoff (2014c)
February 2014	√ <sup>2</sup>	√	√	Parsons Brinckerhoff (2014d)
May 2014	√ <sup>2</sup>	√	√	Parsons Brinckerhoff (2014e)
August 2014	√ <sup>2</sup>	√	√	Parsons Brinckerhoff (2014f)
January 2015	√ <sup>2</sup>	√	√	Parsons Brinckerhoff (2015a)
April 2015	√ <sup>2</sup>	√	√ <sup>5</sup>	Parsons Brinckerhoff (2015b)
October 2015	√ <sup>4</sup>	√	√ <sup>5</sup>	Parsons Brinckerhoff (2015d)
April 2016	√ <sup>4</sup>	√	√ <sup>5</sup>	Parsons Brinckerhoff (2016a)
October 2016	*	√	√ <sup>5</sup>	EMM (2016b)
April 2017	*	√	√ <sup>5</sup>	EMM (2017)

Notes: 1. RMB01 not sampled due to insufficient water in monitoring bore.  
 2. RMB01 and RMB02 not sampled due to insufficient water in monitoring bores.  
 3. MPMB04 not sampled due to blockage in monitoring bore (Parsons Brinckerhoff 2013b).  
 4. RMB04 not sampled due to insufficient water in monitoring bore.  
 5. GLMB01 and GLMB02 not sampled as converted to vibrating wire piezometers (VWP) in March 2015 (Parsons Brinckerhoff 2015b).  
 – = monitoring locations not yet installed.  
 \*= Site not sampled due to bore commissioning early October 2016.

### 3.3.1 Sampling techniques

Two methods were used to obtain groundwater quality samples from the monitoring bores. The methods were selected based on the permeability of the screened formation of each bore, which was determined during hydraulic conductivity testing. In summary:

- a submersible 12V pump was used at higher yielding bores MPMB01 and MPMB02; and
- a micro-purge™ low flow sampling pump was used at lower in monitoring bores and selected deeper bores: MPMB03, MPMB04 and GLMB03.

Where a submersible pump was used, a minimum of three well volumes was purged from the monitoring bore prior to sampling to allow a representative groundwater sample to be collected. Water quality parameters were measured during and immediately after purging to monitor water quality changes and to indicate representative groundwater suitable for sampling and analysis.

The micro-purge™ system allows groundwater to be drawn into the pump intake directly from the screened portion of the aquifer, eliminating the need to purge relatively large volumes of groundwater from these bores. Water quality parameters were monitored during the micro-purge™ pumping to ensure that a representative groundwater sample was collected.

Physicochemical parameters (pH, electrical conductivity (EC), temperature, total dissolved solids (TDS), dissolved oxygen (DO) and oxidation reduction potential (ORP)) were measured during and following purging using a calibrated hand-held water quality meter.

The surface water sample was taken at the river bank using a telescopic sampler. The sample was collected from just below the water surface and approximately 1 m away from the river bank.

### 3.3.2 Chemical analysis of water

Groundwater and surface water samples collected in the field were analysed for a broad chemical suite designed specifically to assess the chemical characteristics of the different water bearing zones at the monitoring sites. Table 3.4 details the analytical suite.

**Table 3.4 Analytical suite**

Category	Parameters		
Physicochemical parameters (measured in the field)	EC	pH	
	Temperature	ORP	
	DO	TDS	
General parameters	EC <sup>1</sup>	pH <sup>1, 3</sup>	
	TDS		
Major ions	Calcium	Chloride	
	Magnesium	Bicarbonate	
	Sodium	Sulphate	
	Potassium	Fluoride	
		Silica	
Metals and minor/trace elements	Aluminium	Iron	
	Antimony <sup>1</sup>	Lead	
	Arsenic	Manganese	
	Barium	Molybdenum	
	Boron	Mercury <sup>2</sup>	
	Bromine	Nickel	
	Beryllium	Selenium	
	Cadmium	Strontium	
	Cobalt	Zinc	
	Copper	Uranium	
	Cyanide <sup>1</sup>	Vanadium	
	Nutrients	Ammonia	Total organic carbon (TOC)
		Nitrite	Phosphorus (total)
Nitrate		Phosphorus (reactive)	
Hydrocarbons	Phenol compounds	Total petroleum hydrocarbons (TPH)	
	Polycyclic aromatic hydrocarbons (PAH)	Benzene, toluene, ethyl benzene and xylenes (BTEX)	
Dissolved gases	Methane	Propane	
	Ethene	Butene	
	Ethane	Butane	
	Propene		

Notes: 1. For samples collected since the May 2013 event.  
 2. For samples collected since the August 2013 sampling event.  
 3. Generally analysed outside of recommended holding times.

Samples requiring laboratory analysis were analysed by Australian Laboratory Services (ALS) in Smithfield, a NATA accredited laboratory.

Water samples for laboratory analysis were collected in sample bottles specified by the laboratory, with appropriate preservation where required. Samples undergoing dissolved metal analysis were filtered through 0.45 µm filters in the field prior to collection.

### 3.3.3 Quality assurance and quality control (QA/QC)

#### i Field QA/QC

The following field sampling QA/QC procedures were applied in order to prevent cross-contamination and preserve sample integrity:

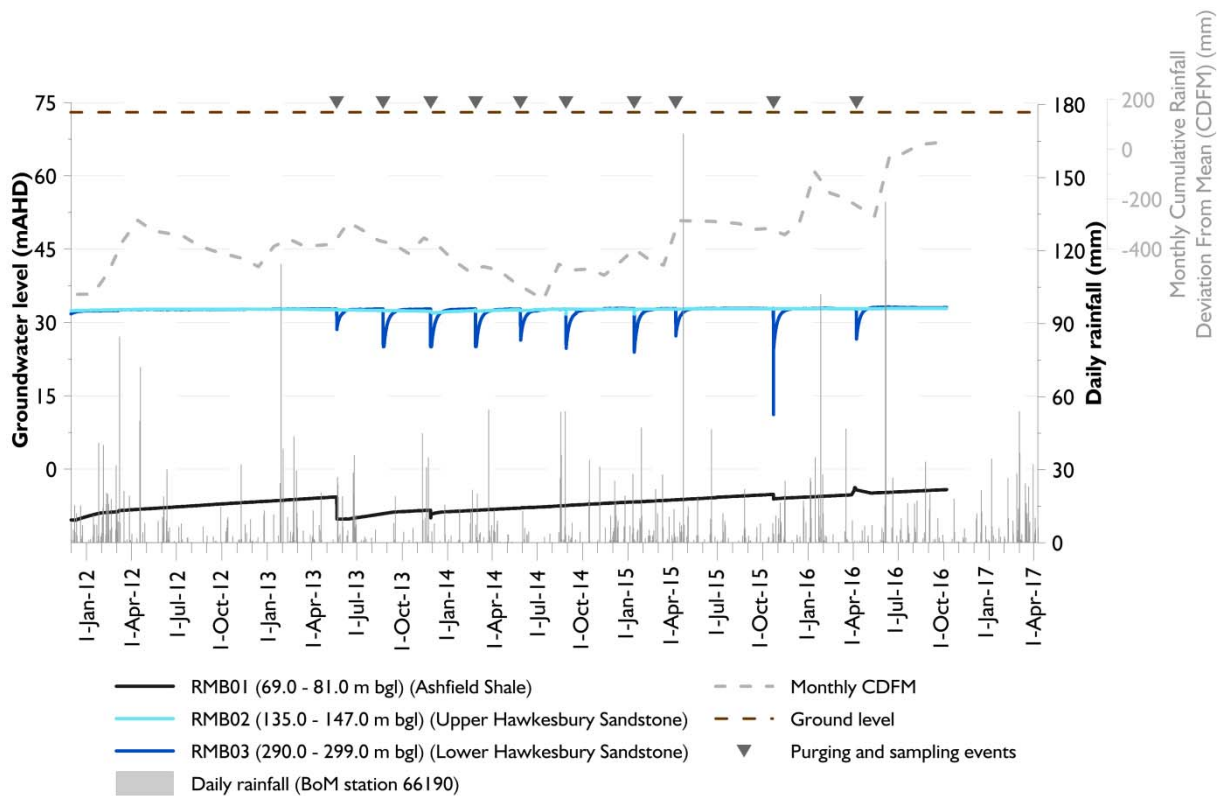
- samples were collected in clearly labelled bottles with appropriate preservation solutions;
- samples were delivered to the laboratories within the specified holding times (except for pH); and
- unstable parameters were analysed in the field (physicochemical parameters).

#### ii Laboratory QA/QC

The laboratories conduct their own internal QA/QC program to assess the repeatability of the analytical procedures and instrument accuracy. These programs include analysis of laboratory sample duplicates, spike samples, certified reference standards, surrogate standards/spikes and laboratory blanks. In addition, a duplicate sample is collected in the field for every ten samples collected to assess sampling and laboratory analysis accuracy.

## 4 Groundwater levels

Hydrographs showing groundwater levels and rainfall from the start of monitoring until April 2017 (the most recent collection of data) are presented for Denham Court in Figure 4.1, Menangle Park in Figure 4.2 and Glenlee in Figure 4.3. The Menangle Park site is located close to the Nepean River and river levels from BoM gauging station 68216 have also been included in the hydrograph for comparison (Figure 4.2). Individual hydrographs for each monitoring bore are included in Appendix A.



**Figure 4.1** Groundwater levels at the Denham Court site

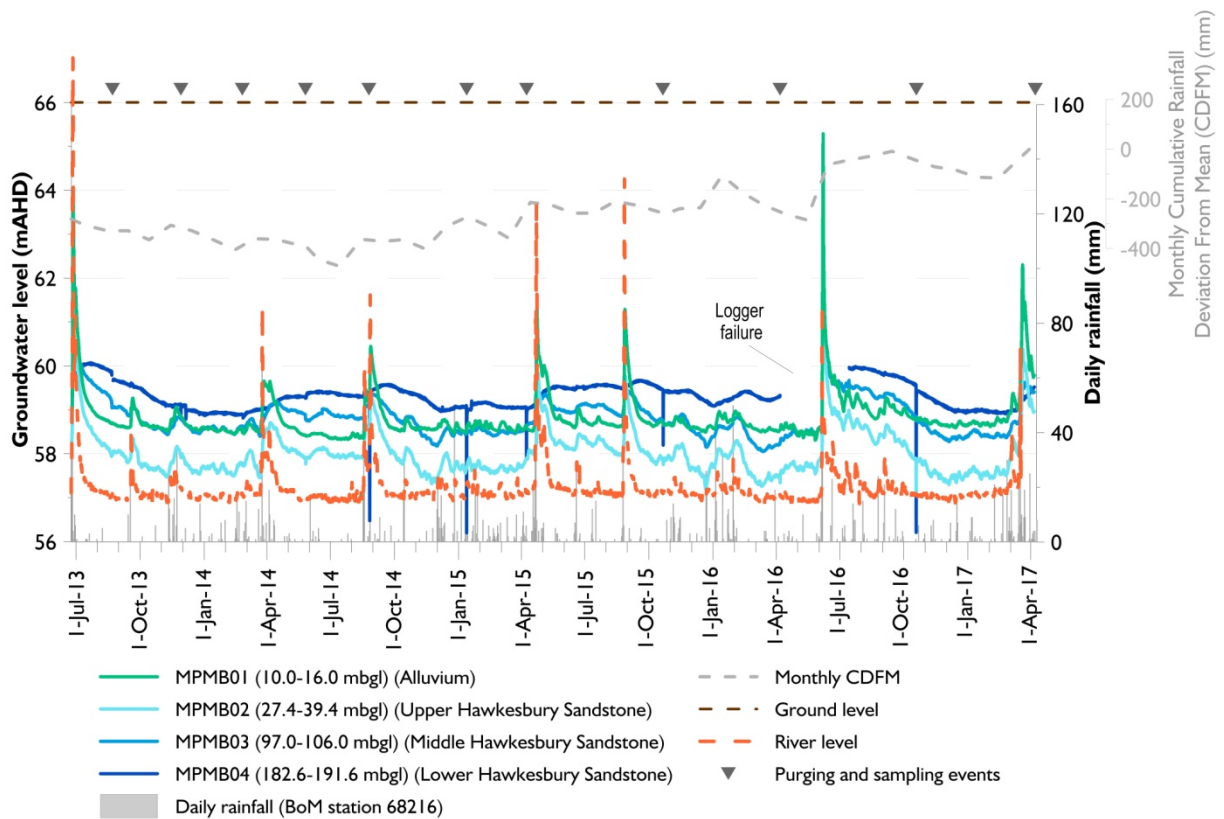


Figure 4.2 Groundwater levels at the Menangle Park site

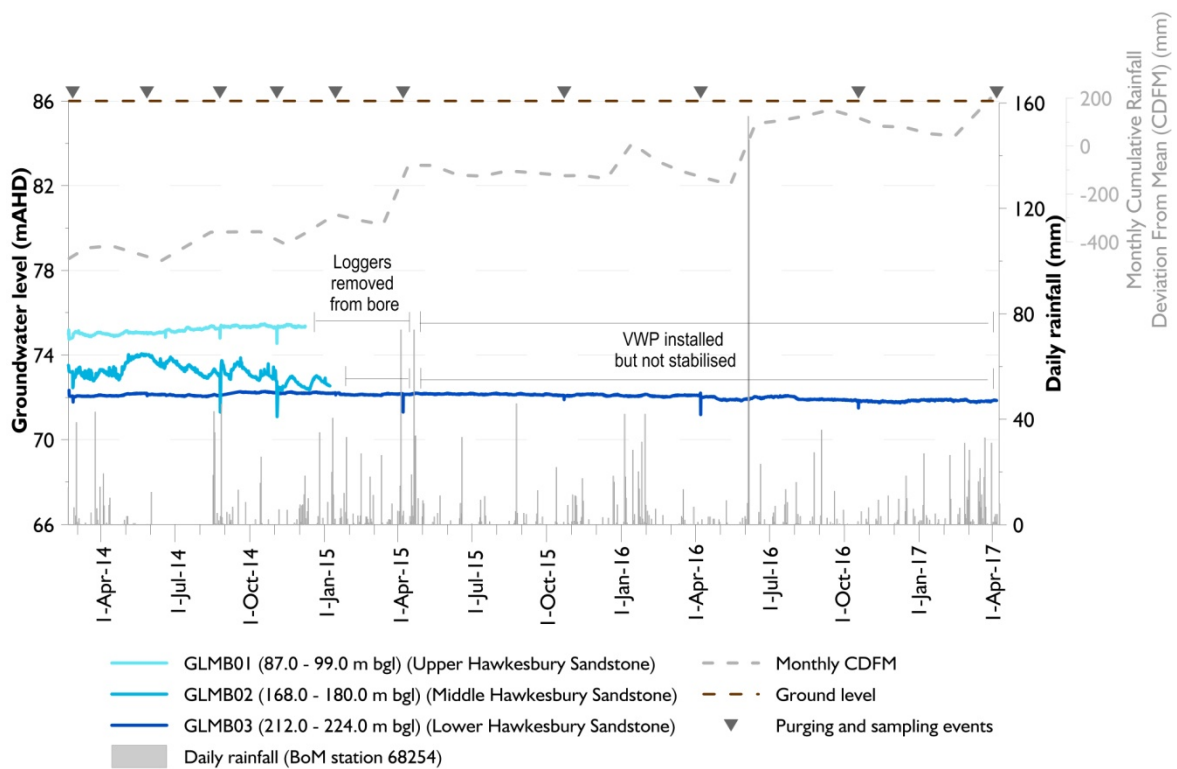


Figure 4.3 Groundwater levels at the Glenlee site

## 4.1 Temporal trends

### 4.1.1 Alluvium

The groundwater level in the alluvium (MPMB01) is shallow (less than 10 mbgl) and shows a direct response to rainfall and flood events (Figure 4.2). During the monitoring year, the groundwater level increased in response to high rainfall events in June 2016 and March 2017, after which it receded over a period of two months to pre-rainfall levels.

### 4.1.2 Ashfield Shale

Groundwater levels in the Ashfield Shale (RMB01) are deep (approximately 80 mbgl) and show no apparent response to rainfall as shown in Figure 4.1.

The groundwater level in RMB01 shows very slow recovery (longer than 1 year) after installation and after purging and sampling. This slow recovery is due to the very low permeability of the formation. Because of the slow recovery in RMB01, the observed water levels do not reflect the regional groundwater level or trends during the monitoring year.

Since its installation in June 2013, there has been insufficient perched water present in shallow bore RMB04 to allow for water level data to be collected. As a result, the water level datalogger was removed from this monitoring bore in June 2015. This monitoring bore was installed to monitor the presence of perched water that may sustain the adjacent Cumberland Plain Woodlands' vegetation.

### 4.1.3 Hawkesbury Sandstone

Groundwater levels in the Hawkesbury Sandstone show no apparent response to individual rainfall events over the monitoring year at the Glenlee sites (Figure 4.3), while at the Menangle Park site, located next to the Nepean River, a definite response to rainfall and flood events is observed at the upper and middle Hawkesbury Sandstone monitoring bores (MPMB02 and MPMB03) and a subdued and delayed response in the lower Hawkesbury Sandstone monitoring bore (MPMB04) (Figure 4.2).

Groundwater levels are deep (approximately 40 mbgl) at the Denham Court site and are above the base of the Ashfield Shale indicating confining conditions. The groundwater levels remained fairly constant with fluctuations of less than approximately 0.5 m until decommissioning in October 2016. Sudden decreases and slow recovery of groundwater level in the lower Hawkesbury Sandstone (RMB03) are related to sampling events and are consistent with the low permeability of the lower Hawkesbury Sandstone at this location.

Groundwater levels are shallow (less than 15 mbgl) at the Glenlee site. The groundwater level at GLMB03 remained fairly constant with fluctuations of less than approximately 0.5 m throughout the monitoring year.

Groundwater levels are shallow (less than 10 mbgl) in the Hawkesbury Sandstone at the Menangle Park site. Groundwater levels at the upper and middle Hawkesbury Sandstone monitoring bores (MPMB02 and MPMB03) increased in response to rainfall events in June 2016 and March 2017, followed by a decrease in groundwater levels over a period of two months. The response to rainfall in the lower Hawkesbury Sandstone (MPMB04) indicates slow and delayed recharge after high rainfall periods.



## 4.2 Spatial trends in the Hawkesbury Sandstone

The conceptual model (AGL 2013) and hydrogeological setting (Section 2.4) suggest that regional groundwater flow within the Hawkesbury Sandstone is from south to north towards the incised river systems of the Sydney Basin.

The groundwater level elevations in the Hawkesbury Sandstone aquifer can be compared between the two monitoring sites. The data collected at the CGP suggests that groundwater flow (in the Hawkesbury Sandstone at least) is more complex than the regional conceptual model. The data suggests that:

- the Nepean River in the vicinity of the Menangle Park site is a probable groundwater discharge area (as there is upward groundwater flow within the Hawkesbury Sandstone and there is no Ashfield Shale to act as a cap rock) - groundwater elevations here are between 55 and 61 mAHD and the Nepean River height is typically between 57 and 58 mAHD;
- the Glenlee site may be close to a groundwater divide as groundwater elevations are between 72 and 75 mAHD; and
- the Denham Court site may be on the other side of the groundwater divide as groundwater elevations are lower at around 31 mAHD.

Further studies and data from a larger number of monitoring sites would be required to further understand the regional flow patterns in the Hawkesbury Sandstone.

## 4.3 Groundwater-surface water interactions

Hydraulic connection between surface water and groundwater exists where the river is in direct contact with the underlying aquifer (Bouwer and Maddock 1997). A 'gaining' stream exists where the water table or groundwater level in a connected aquifer is higher than the running level in a stream and groundwater will flow or discharge to the stream (Land and Water Australia 2007).

The Nepean River level shows a clear response to rainfall (Figure 4.2). The river level is usually lower than the level in the alluvium and Hawkesbury Sandstone units, indicating the river is a gaining river at the Menangle Park site during most of the monitoring period, except for short periods during extremely high rainfall events, when recharge to the alluvial groundwater system occurs.

## 4.4 Vertical gradients

Vertical gradients provide an indication of the potential for groundwater to flow vertically upward or downward at that particular location. A downward hydraulic gradient indicates a potential for downward flow from the shallower unit to the deeper unit, while an upward gradient indicates the opposite. It is noted that the actual flow direction and velocity is also governed by permeability, particularly the permeability of the confining units.

Potential vertical gradients between the various hydrogeological units were assessed and vary between sites:

- groundwater levels are comparable in the upper and lower Hawkesbury Sandstone at the Denham Court site indicating no vertical gradient between these monitored zones. Although the sandstone is confined, there is an apparent upward gradient between the upper Hawkesbury Sandstone and the Ashfield Shale;

- there is an apparent upward hydraulic gradient at the Menangle Park site within the monitored zones of the Hawkesbury Sandstone; however a downward gradient exists between the alluvium and the upper Hawkesbury Sandstone. The similar response to rainfall and flooding events between the alluvial monitoring bore and the Hawkesbury Sandstone monitoring bores indicates connectivity between the two formations at this location, which is expected given the lack of a substantial confining layer (for example shale) between the formations; and
- there is an apparent downward hydraulic gradient within the Hawkesbury Sandstone at the Glenlee site.

Vertical gradients can be influenced by structural geological features (ie faults, folds, and lineaments) and low permeability strata, as described in sections 2.3 and 2.4 respectively.



## 5 Water quality

Water quality monitoring was undertaken between November 2011 and April 2017. Water quality results for the 2016/17 monitoring year are summarised in this chapter and are compared to previous monitoring years (EMM 2016; Parsons Brinckerhoff 2014, 2014b and 2015e). The 2016/17 monitoring year full water quality results are presented in Appendix B and laboratory results in Appendix C.

### 5.1 Groundwater quality

#### 5.1.1 Field parameters

Time series of field EC and pH for the CGP monitoring bores are presented in Figure 5.1 and Figure 5.2.

Groundwater sampled from the alluvium at Menangle Park (MPMB01) is classified as fresh to marginally saline and has a pH of 4.7 to 6.1. The Menangle Park site is a former sand and gravel quarry that has been subsequently rehabilitated. The observed low pH may be related to these previous land use activities.

Groundwater in the Hawkesbury Sandstone at the Menangle Park site (MPMB02-04) is classified as fresh to marginal, while slightly saline conditions are observed at the Glenlee site (GLMB01-03). The fresh to marginal conditions at the Menangle Park site are likely due to the influence of rainfall recharge and connectivity with the Nepean River.

Salinity within the Hawkesbury Sandstone does not show a clear depth related trend at Menangle Park however, salinity decreases with depth at the Glenlee site. This decrease is likely a result of saline groundwater within the Ashfield Shale migrating into the underlying aquifer as a result of vertical leakage. The pH generally increases with depth within the Hawkesbury Sandstone.

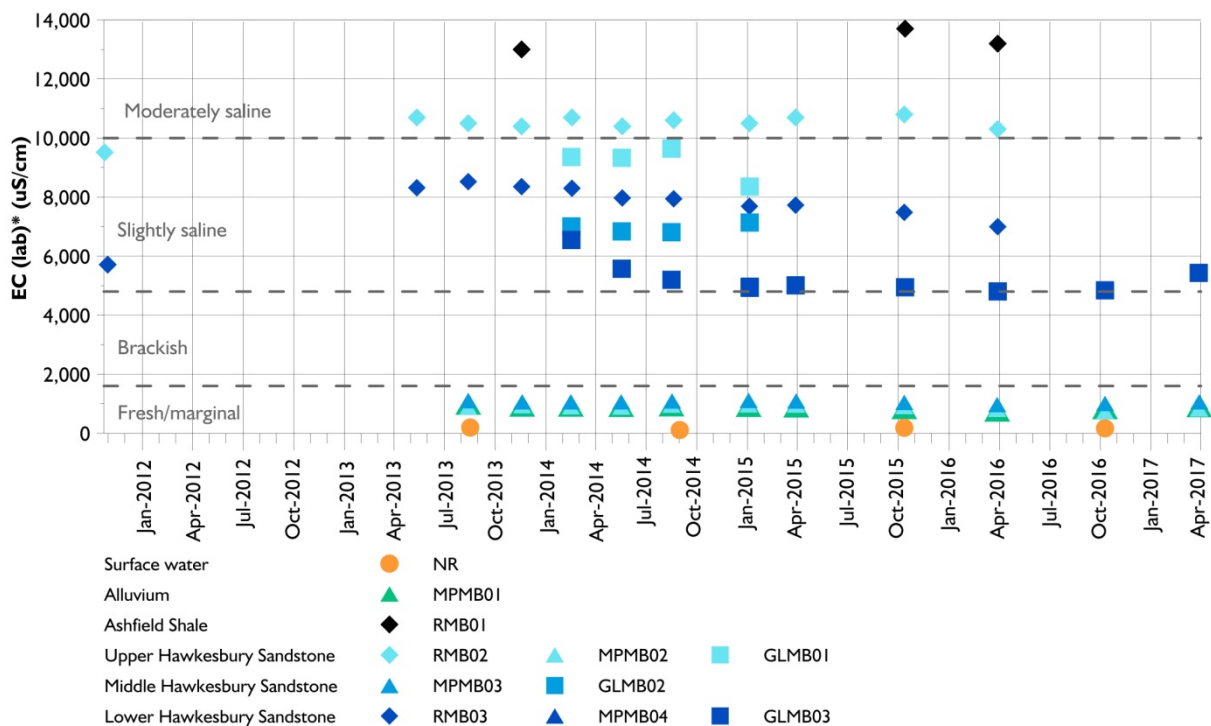


Figure 5.1 EC time series for CGP monitoring bores and Nepean River sample

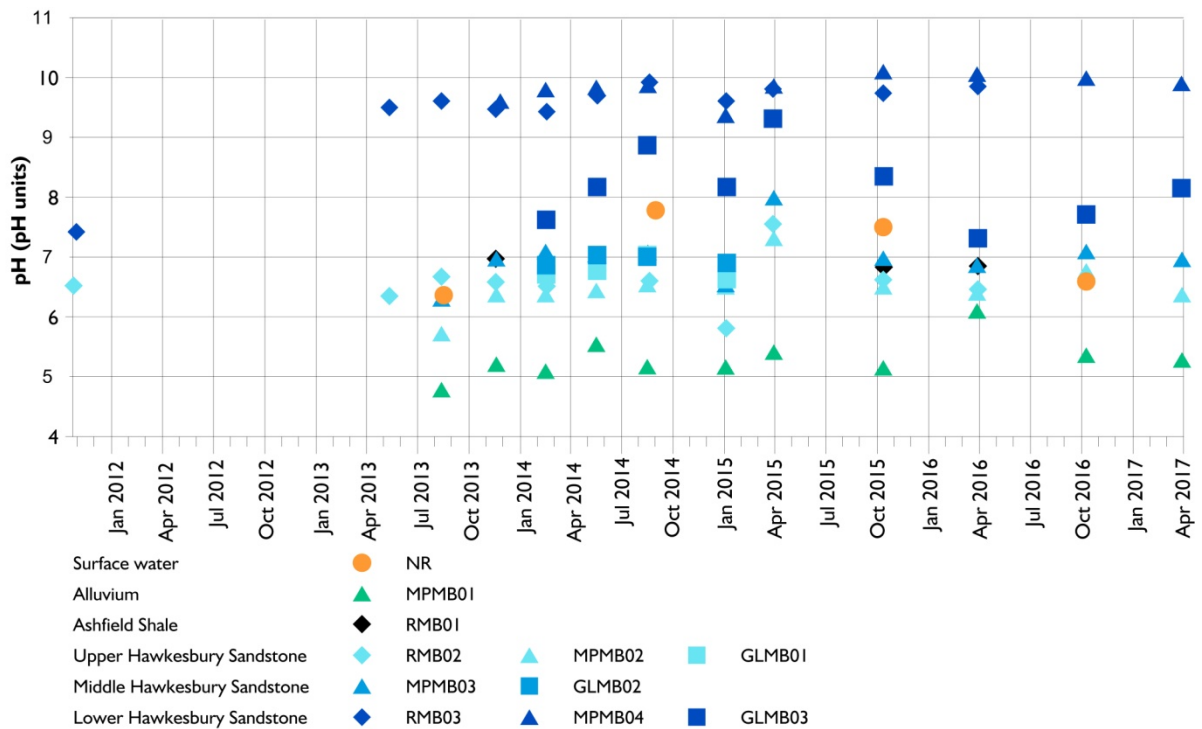


Figure 5.2 pH time series for CGP monitoring bores and Nepean River sample

### 5.1.2 Major ions

The major ion characteristics of groundwater samples for this monitoring year are shown in a piper diagram and representative bivariate plots in Figure 5.3. A piper diagram is a graphical representation of the relative concentrations of major ions ( $\text{Ca}^{2+}$ ,  $\text{Mg}^{2+}$ ,  $\text{Na}^+$ ,  $\text{K}^+$ ,  $\text{Cl}^-$ ,  $\text{HCO}_3^-$ ,  $\text{CO}_3^{2-}$  and  $\text{SO}_4^{2-}$ ). The ratios of sodium/chloride and magnesium/chloride versus chloride concentrations are also presented in two bivariate plots. Chloride is typically assumed to be a conservative (non-reactive) ion in groundwater systems. Evapotranspiration of the initial water with low chloride concentration would therefore be expected to result in a horizontal trend in a major ion/chloride versus chloride plot.

The alluvium has a different geochemical signature to the Hawkesbury Sandstone. Groundwater in the alluvium is dominated by sodium and chloride and groundwater in the Hawkesbury Sandstone is dominated by sodium and bicarbonate.

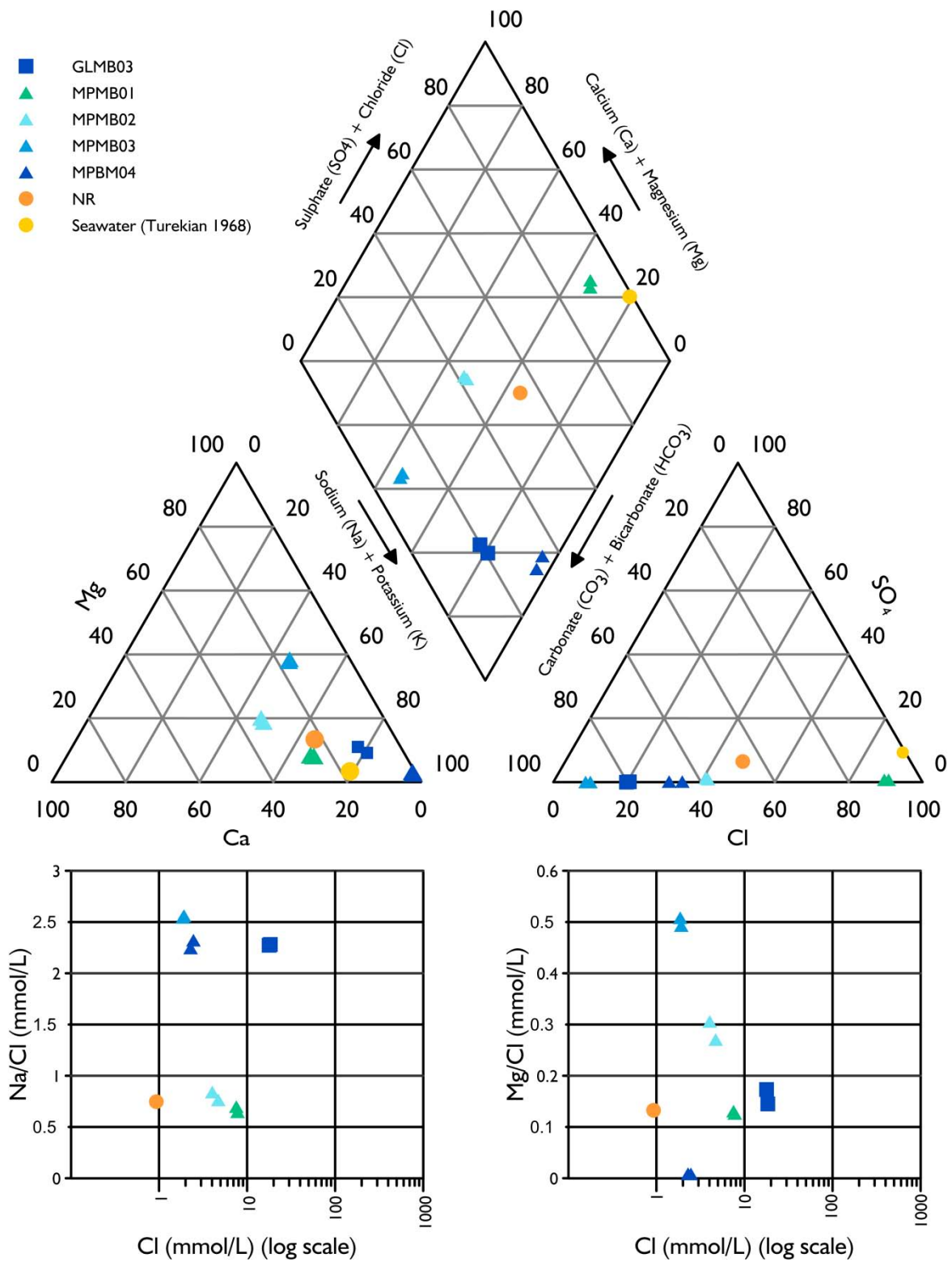
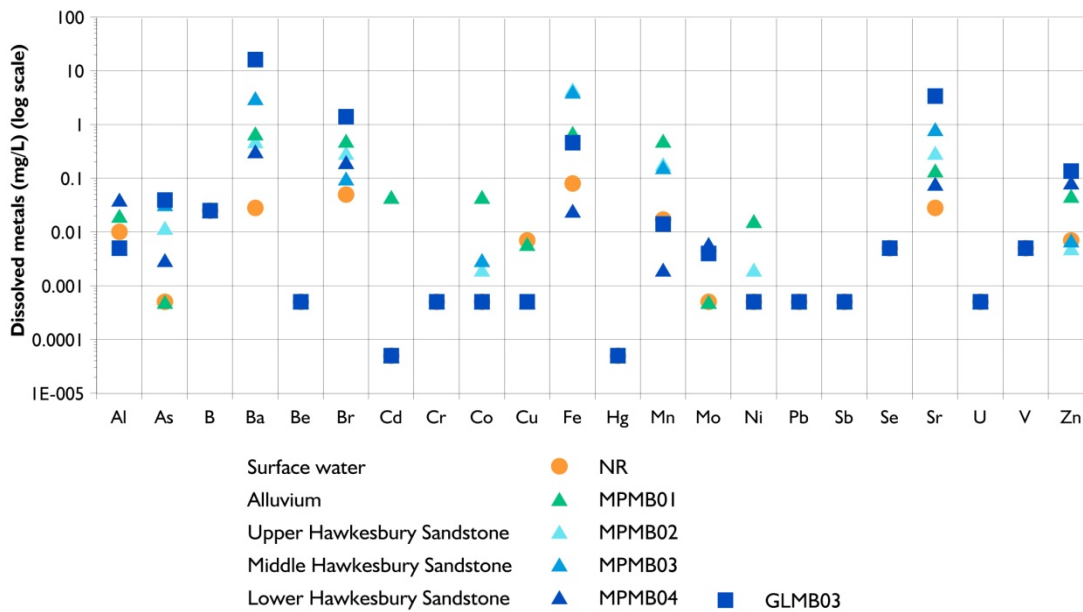


Figure 5.3 Major ion chemistry of groundwater for CGP monitoring bores and Nepean River sample (2016/17 monitoring year)

### 5.1.3 Dissolved metals

Concentrations of dissolved metals in groundwater are presented in Figure 5.4. The major findings for dissolved metals for this monitoring year are as follows:

- dissolved metal concentrations are generally similar in the alluvium and the Hawkesbury Sandstone, with exceptions to arsenic, cadmium, copper, cobalt, manganese and nickel concentrations. Excluding arsenic, these metals are higher in the alluvium compared to the other hydrogeological units. Dissolved metal concentrations in the alluvium were generally comparable to the previous monitoring year, with the exception of increasing cadmium concentrations; and
- slightly elevated dissolved metal concentrations were detected in the Hawkesbury Sandstone at the Glenlee site (eg arsenic, barium, bromine, strontium and zinc) compared with the Menangle Park site. This is not unexpected given the higher salinity at these locations and the influence from the overlying Ashfield Shale. Elevated concentrations of barium, cadmium, molybdenum, strontium and zinc are not uncommon for groundwater in the Hawkesbury Sandstone (Parsons Brinckerhoff 2006 and 2013b). Dissolved metal concentrations in the Hawkesbury Sandstone were generally comparable to the previous monitoring year, with the exception of increasing aluminium concentrations at the Glenlee site, decreased bromine concentrations at MPMB02 and decreased mercury concentrations at MPMB04.

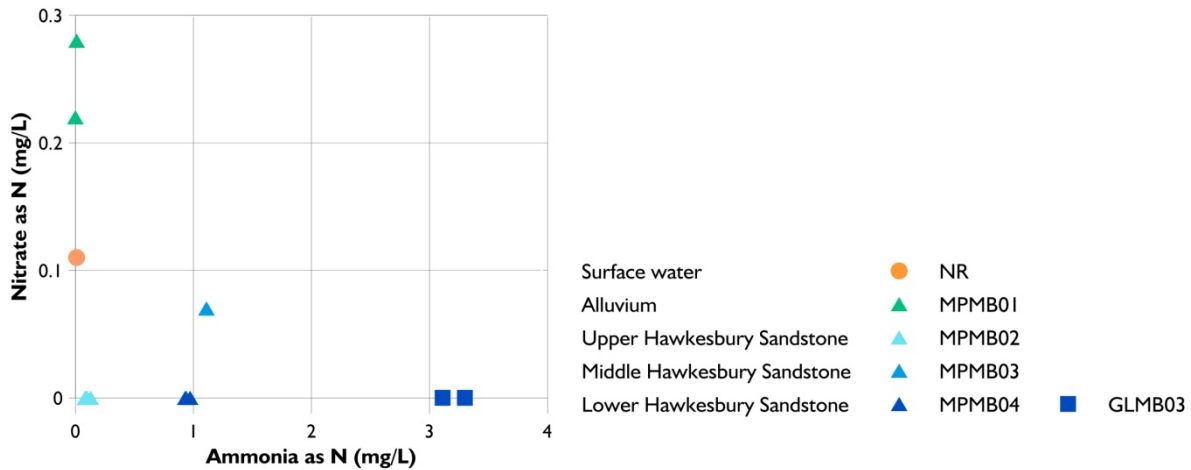


**Figure 5.4** Dissolved metal concentrations in groundwater for CGP monitoring bores the Nepean River sample (2016/17 monitoring year)



### 5.1.4 Nutrients

A plot showing ammonia versus nitrate in groundwater is presented in Figure 5.5.



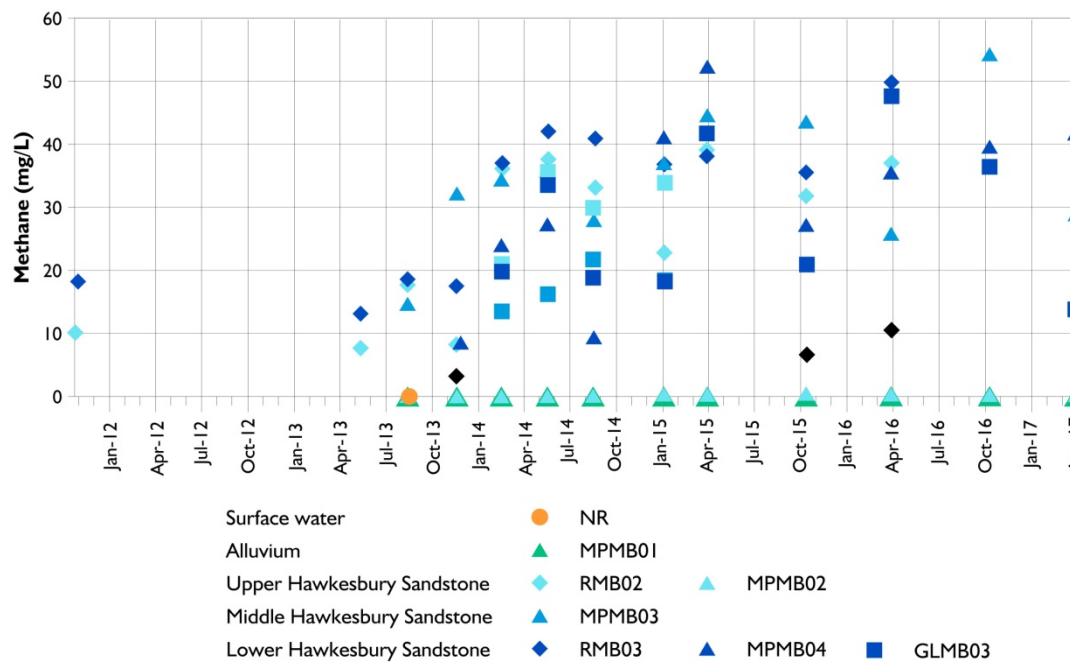
**Figure 5.5 Ammonia versus nitrate concentrations in groundwater for CGP monitoring bores and the Nepean River sample (2016/17 monitoring year)**

The major findings for nutrients are as follows:

- nitrate concentrations in groundwater remained low at all CGP monitoring bores (<0.25 mg/L as N). The highest concentrations continued to be recorded in the alluvial aquifer (MPMB01) (Figure 5.5);
- ammonia concentrations were the lowest at Menangle Park, which is consistent with previous monitoring years (Figure 5.5);
- nitrite concentrations remained below the laboratory LOR at all monitoring bores;
- total phosphorus concentrations were detected in all hydrogeological units. Reactive phosphorus concentrations were detected at both monitoring sites, with the exception of MPMB01-03; and
- total organic carbon (TOC) concentrations differ between hydrogeological units, being generally the highest in the lower Hawkesbury Sandstone at all sites and comparable in the middle and upper Hawkesbury Sandstone and alluvium.

### 5.1.5 Dissolved gasses

A time series plot of dissolved methane concentrations in groundwater is presented in Figure 5.6.



**Figure 5.6 Dissolved methane time series for CGP monitoring bores and Nepean River samples**

The major findings for dissolved gases are as follows:

- dissolved methane was detected in the alluvium (MPMB01) in October 2016 (0.03 mg/L) and April 2017 (0.012 mg/L), with concentrations decreasing in April 2017;
- dissolved methane was detected in the Hawkesbury Sandstone at all monitoring sites. Dissolved methane concentrations were lowest at GLMB03, and decreased from the previous monitoring year. Dissolved methane concentrations in April 2017 at GLMB03 were the lowest recorded at this site since monitoring commenced. Dissolved methane concentrations at MPMB04 have increased from the previous monitoring period (Figure 5.6);
- ethane and propane continued to be detected at low concentrations in groundwater from the Hawkesbury Sandstone at the Glenlee site. Concentrations of these dissolved gases decreased overall at the Glenlee site since monitoring commenced in February 2014.

Dissolved methane is shown to be of mostly thermogenic origin (Parsons Brinckerhoff 2014). The presence of dissolved hydrocarbons observed in the groundwater within the Hawkesbury Sandstone is assessed to be naturally occurring, based on the values present within the groundwater at the former control site (Denham Court, RMB) located at significant distance from the CGP gas production wells. It is likely that the increasing dissolved methane trends are related to degassing of naturally occurring methane after drilling and after purging during groundwater sampling events. Future trends will be monitored.

### 5.1.6 Dissolved hydrocarbons

The Menangle Park site is a former sand and gravel quarry that has been subsequently rehabilitated. Hydrocarbon detections (PAHs and TRHs) at this site may be related to these previous land use activities. During the 2016/17 monitoring year, hydrocarbon detections fell below the laboratory LOR, with the exception of TRH (C6-C10 fraction) which was detected at GLMB03 in October 2016 and April 2017 (see Table B.1).

Toluene continued to be present in the lower Hawkesbury Sandstone (see Table B.1). It is assessed to be naturally occurring, given that it has been detected in groundwater at all monitoring sites since monitoring commenced, including the former control site (Denham Court, RMB) located at a significant distance from development activities. No other BTEX compounds (ie benzene, xylenes and ethyl benzene) were detected during this monitoring year.

Dissolved hydrocarbons can occur naturally in groundwater, with concentrations derived from carbonaceous material (CSIRO 2011). Detections of PAHs, phenols and heavy chain hydrocarbons in both upper and lower Hawkesbury Sandstone across all sites are most likely natural, however possible residues from monitoring bore drilling (eg lubricating oils) cannot be excluded. Future trends will be monitored.

## 5.2 Surface water quality

Surface water quality results from a single sample collected from the Nepean River on 18 October 2016 were compared to ANZECC (2000) guidelines for freshwater ecosystems (95% protection level):

- pH is neutral, within the ANZECC (2000) guideline range (6.5 – 8.0 pH units) and higher than the pH of groundwater in the alluvium;
- salinity is fresh, and within the ANZECC (2000) guideline range (125 – 2,200  $\mu\text{S}/\text{cm}$ ) and lower than groundwater in the alluvium;
- dominant major ions are sodium and bicarbonate (Figure 5.3);
- dissolved metal concentrations were lower than those of groundwater in the alluvium and underlying Hawkesbury Sandstone units, except for copper, manganese and zinc concentrations. All dissolved metal concentrations were below the ANZECC (2000) guideline values;
- ammonia concentrations were below the ANZECC (2000) guideline (0.02 mg/L) and are similar to the alluvial groundwater. Total phosphorus concentration remained below the laboratory LOR and the ANZECC (2000) guideline value (0.05 mg/L);
- dissolved methane was detected at low concentrations (0.01 mg/L); and
- no other dissolved hydrocarbons were detected.

The water quality of the Nepean River was overall comparable to that of the sample collected in October 2015.

## 6 Discussion and conclusions

Monitoring of groundwater levels at the nested monitoring bore sites was undertaken using dataloggers, allowing water level trends to be identified in the alluvium, Ashfield Shale, and Hawkesbury Sandstone. Sampling of water quality at all sites also established useful trends.

The Denham Court nested groundwater monitoring site (monitoring bores RMB01, RMB02, RMB03 and RMB04) was decommissioned by AGL at the landowners request in October 2016. The final water quality monitoring event from the Denham court bores was in April 2016 (EMM 2016), water level data continued to be collected until decommissioning.

The main findings for the 2016/17 monitoring year in regards to **water levels** are:

- the groundwater level in the alluvium at Menangle Park is less than 10 mbgl and shows a direct response to rainfall and flood events;
- groundwater levels appear to follow similar trends in each of the Hawkesbury Sandstone units (upper, middle and lower) at each site. There is no apparent response to individual rainfall events at the Denham Court and Glenlee site. A clear response to rainfall and flood events can be observed at most monitoring bores at the Menangle Park site even though this is an apparent groundwater discharge area;
- groundwater levels are deep (approximately 40 mbgl) at the Denham Court site, although they are above the base of the Ashfield Shale, indicating confining conditions. In contrast, groundwater levels are shallow (less than 15 mbgl) at the Menangle Park and Glenlee sites;
- for the regional Hawkesbury Sandstone aquifer, groundwater elevations are highest at the Glenlee site (approximately 75 mAHD); and lowest at the Menangle Park site (approximately 60 mAHD);
- vertical gradients vary between sites. Upward and downward gradients are evident at the Menangle Park and Glenlee sites respectively;
- the Nepean River elevation is usually lower than the water elevation in the alluvium and Hawkesbury Sandstone units, indicating the river is a gaining stream around the Menangle Park site, except for short periods during extremely high rainfall events when recharge to the underlying groundwater systems is observed; and
- the groundwater level data collected in the alluvium and Hawkesbury Sandstone is indicative of natural systems in long-term equilibrium with occasional seasonal responses to recharge when there is a connection with surface features, as evident at the Menangle site within the alluvium and Hawkesbury Sandstone.

No long term drawdown trends have been observed in the groundwater level data at any of the monitored locations and therefore it can be assumed that no depressurisation due to CSG operations (which involves dewatering of the deep coal seams) is occurring within the monitored zones.

The main findings for this monitoring year in regards to **water quality** are:

- groundwater quality in the alluvium at the Menangle Park site is characterised as fresh to marginally saline and slightly acidic pH. Dissolved metal concentrations are typically low. Minor dissolved hydrocarbons were detected and may be related to previous land use activities;
- groundwater quality in the Hawkesbury Sandstone ranges from fresh to marginally saline at the Menangle Park site and is slightly to moderately saline at the Glenlee site. Salinity decreases with depth at the Glenlee site. Minor detections of dissolved hydrocarbons were present in the Hawkesbury Sandstone. Dissolved methane was detected at all Hawkesbury Sandstone bores and it is likely related to degassing of naturally occurring methane after purging during groundwater sampling events. Dissolved ethane and propane was detected at the Glenlee site only. These compounds are assessed to be naturally occurring given that methane has been observed to occur at both sites, including the former control site (Denham Court) which was located at a significant distance from any development activities;
- toluene was detected at all lower Hawkesbury Sandstone monitoring points. It is assessed to be naturally occurring given that it has been detected at all sites, including the former control site (Denham Court) which was located at a significant distance from the CGP gas production wells. No other BTEX compounds were detected;
- the Nepean River at the Menangle Park site is of neutral pH and fresh water quality. Dissolved metal concentrations were typically lower for the surface water than the alluvium and underlying Hawkesbury Sandstone. Ammonia concentrations were below the ANZECC (2000) guideline values and similar to alluvial groundwater. Minor dissolved methane concentrations were detected however no other hydrocarbons were detected; and
- no significant change in water quality was detected during the 2016/17 monitoring year compared to the previous monitoring year (EMM 2016a).

No adverse water quality impacts that can be attributed to CSG operations were observed at any of the monitored sites. Water quality results are not significantly different between the former control site (Denham Court) and monitoring sites located within the CGP footprint (Menangle Park and Glenlee).

From the available data, there are no observable impacts to groundwater levels or quality or surface water quality that could be attributable to the CSG operations. There is also no evidence of connectivity between the shallower monitored zones and the coal seams. This is in agreement with the conceptual model developed during the Phase 1 studies (Parsons Brinckerhoff 2011). The presence of extensive and thick claystone formations (aquitards and aquicludes) between the Hawkesbury Sandstone and the targeted coal seams restricts depressurisation and impedes the vertical flow of groundwater.



## References

---

AGL Upstream Investments Pty Ltd 2013, 'Hydrogeological Summary of the Camden Gas project area'.

Alder, D, Byrnes, J, Cozens, S, Hill, M and Armstrong, M 1991, Programme Completion Report - Camden Drilling Programme, Coal and Petroleum Geology Branch, Department of Mineral Resources, Sydney.

ANZECC 2000, 'Chapter 3 Aquatic Ecosystems', in Australian and New Zealand Guidelines for Fresh and Marine Water Quality, Australian and New Zealand Environment and Conservation Council and Agriculture and Resource Management Council of Australia and New Zealand.

Australian Water Resources Council 1988, 'Guidelines for the preparation of Australian hydrogeological maps', Department of Primary Industries and Energy, Australian Water Resources Council, Water Management Series no. 13.

Bembrick, CS, Herbert, C & Clarke, NR 1987, 'Permo-Triassic Stratigraphy', in Jones and Clarke (eds), Geology of the Penrith 1:100,000 Sheet 9030, Department of Minerals and Energy, Geological Survey of New South Wales, Sydney.

Blevin, J., Hall, L., Chapman, J., and Pryer, L. 2007, 'Sydney Basin Reservoir Prediction Study and GIS', Project MR705, Confidential Report to NSW DPI and Macquarie Energy by FROG Tech Pty Ltd.

Bouwer H, Maddock T III 1997, 'Making sense of the interactions between groundwater and streamflow; lessons for water masters and adjudicators', Rivers, vol. 6, no. 1, pp. 19–31.

Bowman, HN 1974, Geology of the Wollongong, Kiama and Robertson 1:50,000 sheets, 9029-II, 9028-I & II. Geological Survey of New South Wales, Sydney, 179 pp.

Bray, A, Hatherly, P and Fergusson, CL 2010, 'Seismic reflection evidence for the evolution of the Camden Syncline and Lapstone Structural Complex, central Sydney Basin, Australia'. Australian Journal of Earth Sciences, vol. 57, pp. 993-1004.

Bureau of Meteorology, Climate Data Online, accessed 8 August 2017, <http://www.bom.gov.au/climate/data/>

CSIRO 2011, 'A desktop study of the occurrence of Total Petroleum Hydrocarbons (TPH) and partially water-soluble organic compounds in Permian coals and associated coal seam groundwater', Report for AGL Energy, EP-13-09-11-11.

EMM 2016a, 2015-2016 Groundwater and Surface Water Monitoring Report – Camden Gas Project, prepared for AGL Upstream Investments Pty Ltd by EMM Consulting Pty Ltd.

- 2016b, Camden Gas Project – FY17 Six-monthly Monitoring Update – October 2016, dated October 2016, EMM Consulting, Sydney.
- 2017, Camden Gas Project – FY17 Six-monthly Monitoring Update – April 2017, dated April 2017, EMM Consulting, Sydney.

Land and Water Australia 2007, 'The Impact on Groundwater Use on Australia's Rivers', Technical report, April 2007.

Madden, A 2009, 'The Scarborough Sandstone and its connectivity with longwall mining in a water supply catchment', Groundwater 2010, National Groundwater conference, Canberra, NSW, Australia, 31 October – 4 November 2010.

McLean, W and Ross, JB 2009, 'Hydrochemistry of the Hawkesbury Sandstone Aquifers in Western Sydney and the Upper Nepean Catchment', IAH NSW, Groundwater in the Sydney Basin Symposium, Sydney, NSW, Australia, 4-5 August 2009.

Moffit, RS 1999, Southern Coalfield Regional Geology 1:100 000, 1st edition, Geological Survey of New South Wales, Sydney.

- 2000, A Compilation of the Geology of the Southern Coalfield, Notes to Accompany the 1:100,000 Southern Coalfield Geological Map, Geological Survey Report No. GS1998/277, Geological Survey of New South Wales, Sydney.

NSW Office of Water (NOW) 2011, 'Water Sharing Plan for the Greater Metropolitan Region Groundwater Sources – Background document', dated July 2011.

Old, AN 1942, 'The Wianamatta Shale Waters of the Sydney District', Agricultural Gazette of New South Wales, Misc. pub. No. 3225.

Parkin, TJ 2002, 'Disrupted flow in a localised area of the Georges River above longwall mining operations in Appin, NSW. A geophysical investigation based on earth resistivity techniques', Honours Thesis, Department of Earth and Planetary Sciences, Macquarie University.

Parsons Brinckerhoff 2006, 'Hydrochemical and environmental isotope program — Upper Nepean groundwater investigation sites', Report to the Sydney Catchment Authority, Sydney.

- 2011, 'Phase 1 Groundwater Assessment and Conceptual Hydrogeological Model for the Northern Expansion of the Camden Gas Project', 2114759A PR\_5375 RevF, dated February 2011, Parsons Brinckerhoff, Sydney.
- 2012, 'Update on the Camden North Phase 2 Groundwater Program – Denham Court Road', 2114759B-SCW-LTR-5637 Rev A, dated August 2012, Parsons Brinckerhoff, Sydney.
- 2013a, 'Camden Gas Project – 2012–2013 Annual Groundwater Monitoring Status Report', dated October 2013, RPT\_7568 Rev C, dated October 2013, Parsons Brinckerhoff, Sydney.
- 2013b, Water quality investigation Camden Gas Project, 2114759C PT\_7196 RevD, dated July 2013, Parsons Brinckerhoff, Sydney.
- 2013c, 'Camden Gas project – FY14 Q1 Groundwater Monitoring Update – September 2013', RPT\_7573 Rev B, dated October 2013, Parsons Brinckerhoff, Sydney.
- 2014a, 'Drilling Completion Report – Denham Court, Menangle Park and Glenlee. Camden Gas Project', 2114759B-WAT-RPT-7763 Rev01, draft dated August 2014, Parsons Brinckerhoff, Sydney.
- 2014b, 'Camden Gas Project – 2013-2014 Groundwater and Surface Water Monitoring Status Report', 2268518A-WAT-RPT-7779 RevC, dated October 2014, Parsons Brinckerhoff, Sydney.



- 2014c, 'Camden Gas Project – FY14 Q2 Groundwater Monitoring Update – December 2013', 2193361A-WAT-RPT-7640 RevC, dated April 2014, Parsons Brinckerhoff, Sydney.
- 2014d, 'Camden Gas Project – FY14 Q3 Groundwater Monitoring Update – March 2014', 2193361A-WAT-RPT-7720 RevB, dated April 2014, Parsons Brinckerhoff, Sydney.
- 2014e, 'Camden Gas Project – FY14 Q4 Groundwater Monitoring Update – June 2014', 2193361A-WAT-RPT-7748 RevB, dated June 2014, Parsons Brinckerhoff, Sydney.
- 2014f, 'Camden Gas Project – FY15 Q1 Groundwater Monitoring Update – October 2014', 2268518A-WAT-MEM-001 RevA, dated October 2014, Parsons Brinckerhoff, Sydney.
- 2015a, 'Camden Gas Project – FY15 Q2 Groundwater Monitoring Update – January 2015', 2268518A-WAT-MEM-003 RevB, dated March 2015, Parsons Brinckerhoff, Sydney.
- 2015b, 'Camden Gas Project – FY15 Q3 Groundwater Monitoring Update – April 2015', 2268518B-WAT-MEM-001 RevD, dated May 2015, Parsons Brinckerhoff, Sydney.
- 2015c, 'Camden Gas Project – FY15 Q4 Groundwater Monitoring Update – June 2015', 2268518B-WAT-MEM-002 RevB, dated July 2015, Parsons Brinckerhoff, Sydney.
- 2015d, 'Camden Gas Project – FY16 Six-monthly monitoring update – October 2015', 2200644A-WAT-MEM-001 RevC, dated November 2015, Parsons Brinckerhoff, Sydney.
- 2015e, 'Camden Gas Project – 2014-2015 Groundwater and Surface Water Monitoring Status Report, 2200644A-WAT-RPT-001 RevD, dated October 2015, Parsons Brinckerhoff, Sydney.
- 2016a, 'Camden Gas Project – FY16 Six-monthly monitoring update – April 2016, 2200644A-WAT-MEM-002 RevB, dated May 2016, Parsons Brinckerhoff, Sydney.

Ross, JB 2014, 'Groundwater resource potential of the Triassic sandstones of the southern Sydney Basin: an improved understanding', Australian Journal of Earth Sciences, vol. 61, no. 3, pp.463-474.

Sydney Catchment Authority (SCA) 2007, 'Appendix 5 - Draft Water Monitoring Guidelines', Submission to Inquiry into the NSW Southern Coalfields July 2007, Sydney Catchment Authority.

Turekian, KK 1968, Oceans. Prentice-Hall.

## Glossary

---

Acidity	Base neutralising capacity.
Alkalinity	Acid neutralising capacity.
Alluvium	Unconsolidated sediments (clays, sands, gravels and other materials) deposited by flowing water. Deposits can be made by streams on river beds, floodplains, and alluvial fans.
Alluvial aquifer	Permeable zones that store and produce groundwater from unconsolidated alluvial sediments. Shallow alluvial aquifers are generally unconfined aquifers.
Ammonia	A compound of nitrogen and hydrogen (NH <sub>3</sub> ) that is a common by-product of animal waste and landfills but is also found naturally in reduced environments. Ammonia readily converts to nitrate in soils and streams.
Anion	An ion with a negative charge – usually non-metal ions when disassociated and dissolved in water.
Aquatic ecosystem	The stream channel, lake or estuary bed, water, and (or) biotic communities and the habitat features that occur therein.
Aquiclude	An impermeable unit that acts as a barrier to the flow of groundwater from one formation to another.
Aquifer	Rock or sediment in a formation, group of formations, or part of a formation that is saturated and sufficiently permeable to transmit economic quantities of water.
Aquifer properties	The characteristics of an aquifer that determine its hydraulic behaviour and its response to abstraction.
Aquifer, confined	An aquifer that is overlain by low permeability strata. The hydraulic conductivity of the confining bed is significantly lower than that of the aquifer.
Aquifer, semi-confined	An aquifer overlain by a low-permeability layer that permits water to slowly flow through it. During pumping, recharge to the aquifer can occur across the leaky confining layer – also known as a leaky artesian or leaky confined aquifer.
Aquifer, unconfined	Also known as a water table aquifer. An aquifer in which there are no confining beds between the zone of saturation and the surface. The water table is the upper boundary of an unconfined aquifer.
Aquitard	A low permeability unit that can store groundwater and also transmit it slowly from one formation to another. Aquitards retard but do not prevent the movement of water to or from adjacent aquifers.
Australian Height Datum (AHD)	The reference point (very close to mean sea level) for all elevation measurements, and used for correlating depths of aquifers and water levels in bores.
Beneficial aquifer	An aquifer with a water resource of sufficient quality and quantity to provide either ecosystem protection, raw water for drinking water supply, and agricultural or industrial water.
Bore	A structure drilled below the surface to obtain water from an aquifer or series of aquifers.
Boundary	A lateral discontinuity or change in the aquifer resulting in a significant change in hydraulic conductivity, storativity or recharge.
Cation	An ion with a positive charge – usually metal ions when disassociated and dissolved in water.
Claystone	A non-fissile rock of sedimentary origin composed primarily of clay-sized particles (less than 0.004 mm).
Coal	A sedimentary rock derived from the compaction and consolidation of vegetation or swamp deposits to form a fossilised carbonaceous rock.
Coal seam	A layer of coal within a sedimentary rock sequence.
Coal seam gas (CSG)	Coal seam gas is a form of natural gas (predominantly methane) that is extracted from coal seams.

Concentration	The amount or mass of a substance present in a given volume or mass of sample, usually expressed as milligram per litre (water sample) or micrograms per kilogram (sediment sample).
Conceptual model	A simplified and idealised representation (usually graphical) of the physical hydrogeologic setting and the hydrogeological understanding of the essential flow processes of the system. This includes the identification and description of the geologic and hydrologic framework, media type, hydraulic properties, sources and sinks, and important aquifer flow and surface-groundwater interaction processes.
Confining layer	Low permeability strata that may be saturated but will not allow water to move through it under natural hydraulic gradients.
Datalogger	A digital recording instrument that is inserted in monitoring and pumping bores to record pressure measurements and water level variations.
Dual permeability aquifer	An aquifer in which groundwater flow is through both the primary porosity of the rock matrix and the secondary porosity of fractures and fissures.
Electrical conductivity (EC)	A measure of a fluid's ability to conduct an electrical current and is an estimation of the total ions dissolved. It is often used as a measure of water salinity.
Facies	An assemblage or association of mineral, rock, or fossil features reflecting the environment and conditions of origin of the rock. It refers to the appearance and peculiarities that distinguish a rock unit from associated or adjacent units.
Fault	A fracture in rock along which there has been an observable amount of displacement. Faults are rarely single planar units; normally they occur as parallel to sub-parallel sets of planes along which movement has taken place to a greater or lesser extent. Such sets are called fault or fracture zones.
Groundwater	The water contained in interconnected pores or fractures located below the water table in the saturated zone.
Groundwater level	The water level measured in a bore; this may be at or close to the water table in unconfined aquifers, or represent the average piezometric level across the screened interval in confined aquifers.
Groundwater flow	The movement of water through openings in sediment and rock within the zone of saturation.
Groundwater system	A system that is hydrogeologically more similar than different in regard to geological province, hydraulic characteristics and water quality, and may consist of one or more geological formations.
Hydraulic conductivity	The rate at which water of a specified density and kinematic viscosity can move through a permeable medium (notionally equivalent to the permeability of an aquifer to fresh water).
Hydraulic gradient	The change in total hydraulic head with a change in distance in a given direction.
Hydraulic head	A specific measurement of water pressure above a datum. It is usually measured as a water surface elevation, expressed in units of length. In an aquifer, it can be calculated from the depth to water in a monitoring bore. The hydraulic head can be used to determine a hydraulic gradient between two or more points.
Hydrogeology	The study of the interrelationships of geologic materials and processes with water, especially groundwater.
Hydrology	The study of the occurrence, distribution, and chemistry of all surface waters.
Ion	An ion is an atom or molecule where the total number of electrons is not equal to the total number of protons, giving it a net positive or negative electrical charge.
Limit or reporting (LOR)	The concentration below which a particular analytical method cannot determine, with a high degree of certainty, a concentration.
Lithology	The study of rocks and their depositional or formational environment on a large specimen or outcrop scale.

Major ions	Constituents commonly present in concentrations exceeding 10 milligram per litre. Dissolved cations generally are calcium, magnesium, sodium, and potassium; the major anions are sulphate, chloride, fluoride, nitrate, and those contributing to alkalinity, most generally assumed to be bicarbonate and carbonate.
Methane (CH <sub>4</sub> )	An odourless, colourless, flammable gas, which is the major constituent of natural gas. It is used as a fuel and is an important source of hydrogen and a wide variety of organic compounds.
MicroSiemens per centimetre (μS/cm)	A measure of water salinity commonly referred to as EC (see also electrical conductivity). Most commonly measured in the field with calibrated field meters.
Monitoring bore	A non-pumping bore, is generally of small diameter that is used to measure the elevation of the water table and/or water quality. Bores generally have a short well screen against a single aquifer through which water can enter.
Monitoring period	Refers to data collected between October 2011 and June 2015.
Monitoring year	Refers to data collected between July 2015 and June 2016.
Normal faulting	Where the fault plane is vertical or dips towards the downthrow side of a fault.
Oxidising conditions	Conditions in which a species loses electrons and is present in oxidised form.
Permeability	The property or capacity of a porous rock, sediment, clay or soil to transmit a fluid. It is a measure of the relative ease of fluid flow under unequal pressure. The hydraulic conductivity is the permeability of a material for water at the prevailing temperature.
Permeable material	Material that permits water to move through it at perceptible rates under the hydraulic gradients normally present.
Permian	The last period of the Palaeozoic era that finished approximately 252 million years before present.
pH	Potential of Hydrogen; the logarithm of the reciprocal of hydrogen-ion concentration in gram atoms per litre; provides a measure on a scale from 0 to 14 of the acidity or alkalinity of a solution (where 7 is neutral, greater than 7 is alkaline and less than 7 is acidic).
Porosity	The proportion of open space within an aquifer, comprised of intergranular space, pores, vesicles and fractures.
Porosity, primary	The porosity that represents the original pore openings when a rock or sediment formed.
Porosity, secondary	The porosity caused by fractures or weathering in a rock or sediment after it has been formed.
Quaternary	The most recent geological period extending from approximately 2.6 million years ago to the present day.
Quality assurance	Evaluation of quality-control data to allow quantitative determination of the quality of chemical data collected during a study. Techniques used to collect, process, and analyse water samples are evaluated.
Recharge	The process which replenishes groundwater, usually by rainfall infiltrating from the ground surface to the water table and by river water reaching the water table or exposed aquifers. The addition of water to an aquifer.
Recharge area	A geographic area that directly receives infiltrated water from surface and in which there are downward components of hydraulic head in the aquifer. Recharge generally moves downward from the water table into the deeper parts of an aquifer then moves laterally and vertically to recharge other parts of the aquifer or deeper aquifer zones.

Recovery	The difference between the observed water level during the recovery period after cessation of pumping and the water level measured immediately before pumping stopped.
Redox potential (ORP or Eh)	The redox potential is a measure (in volts) of the affinity of a substance for electrons – its electronegativity – compared with hydrogen (which is set at 0). Substances more strongly electronegative than (i.e. capable of oxidising) hydrogen have positive redox potentials. Substances less electronegative than (i.e. capable of reducing) hydrogen have negative redox potentials. Also known as oxidation-reduction potential and Eh.
Redox reaction	Redox reactions, or oxidation-reduction reactions, are a family of reactions that are concerned with the transfer of electrons between species, and are mediated by bacterial catalysis. Reduction and oxidation processes exert an important control on the distribution of species like O <sub>2</sub> , Fe <sup>2+</sup> , H <sub>2</sub> S and CH <sub>4</sub> etc. in groundwater.
Salinity	The concentration of dissolved salts in water, usually expressed in EC units or milligrams of total dissolved solids per litre (mg/L TDS).
Salinity classification	<p>Fresh water quality – water with a salinity &lt;800 µS/cm.</p> <p>Marginal water quality – water that is more saline than freshwater and generally waters between 800 and 1,600 µS/cm.</p> <p>Brackish quality – water that is more saline than freshwater and generally waters between 1,600 and 4,800 µS/cm.</p> <p>Slightly saline quality – water that is more saline than brackish water and generally waters with a salinity between 4,800 and 10,000 µS/cm.</p> <p>Moderately saline quality – water that is more saline than slightly saline water and generally waters between 10,000 and 20,000 µS/cm.</p> <p>Saline quality – water that is almost as saline as seawater and generally waters with a salinity greater than 20,000 µS/cm.</p> <p>Seawater quality – water that is generally around 55,000 µS/cm.</p> <p>(Australian Water Resources Council 1988)</p>
Sandstone	Sandstone is a sedimentary rock composed mainly of sand-sized minerals or rock grains (predominantly quartz).
Screen	A type of bore lining or casing of special construction, with apertures designed to permit the flow of water into a bore while preventing the entry of aquifer or filter pack material.
Sedimentary rock aquifer	These occur in consolidated sediments such as porous sandstones and conglomerates, in which water is stored in the intergranular pores, and limestone, in which water is stored in solution cavities and joints. These aquifers are generally located in sedimentary basins that are continuous over large areas and may be tens or hundreds of metres thick. In terms of quantity, they contain the largest volumes of groundwater.
Shale	A laminated sedimentary rock in which the constituent particles are predominantly of clay size.
Siltstone	A fine-grained rock of sedimentary origin composed mainly of silt-sized particles (0.004 to 0.06 mm).
Standing water level (SWL)	The height to which groundwater rises in a bore after it is drilled and completed, and after a period of pumping when levels return to natural atmospheric or confined pressure levels.
Stratigraphy	The depositional order of sedimentary rocks in layers.
Surface water-groundwater interaction	This occurs in two ways: (1) streams gain water from groundwater through the streambed when the elevation of the water table adjacent to the streambed is greater than the water level in the stream; and (2) streams lose water to groundwater through streambeds when the elevation of the water table is lower than the water level in the stream.
Tertiary	Geologic time at the beginning of the Cainozoic era, 65 to 2.6 million years ago, after the Cretaceous and before the Quaternary.
Total Dissolved Solids (TDS)	A measure of the salinity of water, usually expressed in milligrams per litre (mg/L). See also EC.

---

Water quality	Term used to describe the chemical, physical, and biological characteristics of water, usually in respect to its suitability for a particular purpose.
Water quality data	Chemical, biological, and physical measurements or observations of the characteristics of surface and ground waters, atmospheric deposition, potable water, treated effluents, and waste water and of the immediate environment in which the water exists.
Well	Pertaining to a gas exploration well or gas production well.

---

## Abbreviations

---

AGL	AGL Upstream Investments Pty Ltd
BoM	Bureau of Meteorology
BTEX	Benzene, toluene, ethyl benzene and xylenes
CDFM	Cumulative deviation from mean
CGP	Camden Gas Project
CSG	Coal seam gas
DO	Dissolved oxygen
EC	Electrical conductivity
LOR	Limit of reporting
ORP	Oxidation reduction potential
PAH	Polycyclic aromatic hydrocarbons
SCA	Sydney Catchment Authority
TDS	Total dissolved solids
TPH	Total petroleum hydrocarbons
VWP	Vibrating wire piezometer





## Units

---

°C	degrees Celsius
L/s	litres per second
m	metres
mAHD	metres Australian Height Datum
mbgl	metres below ground level
m/d	metres per day
mg/L	milligrams per litre
µg/L	micrograms per litre
mV	millivolt
µg/L	micro grams per litre
µS/cm	microSiemens per centimetre

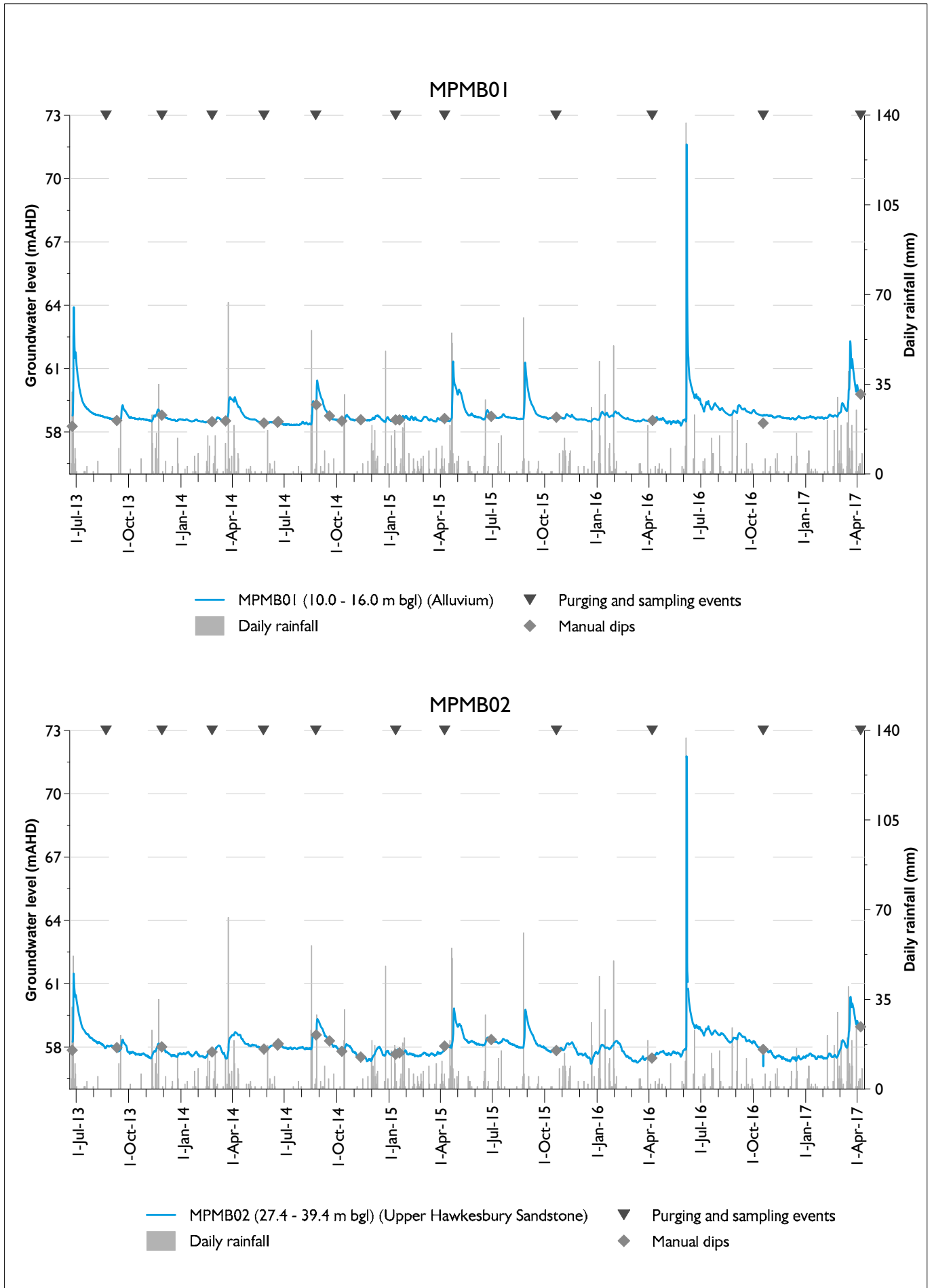


Appendix A

Groundwater hydrographs

---

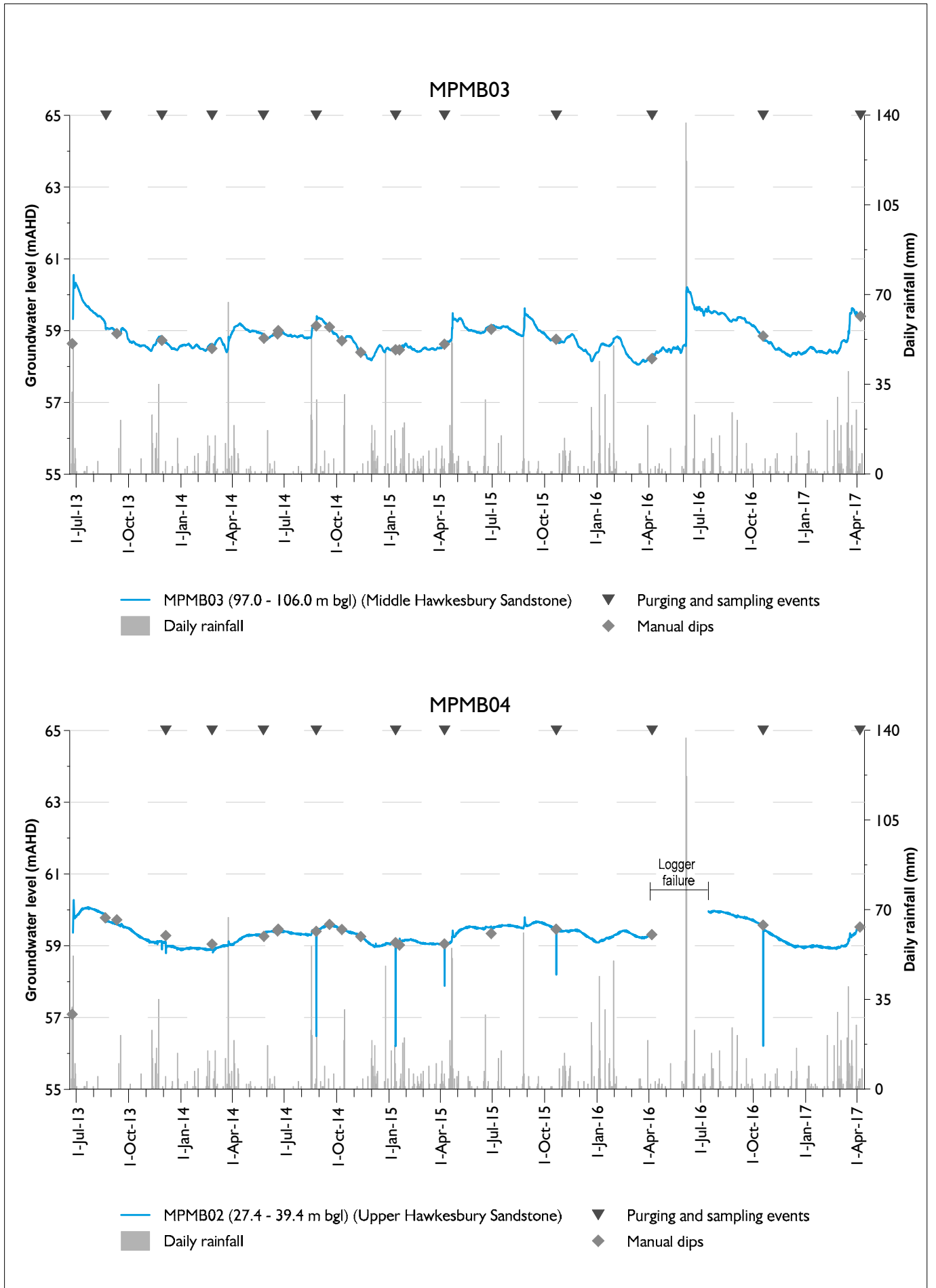




**MPMB01 and MPMB02 hydrographs**

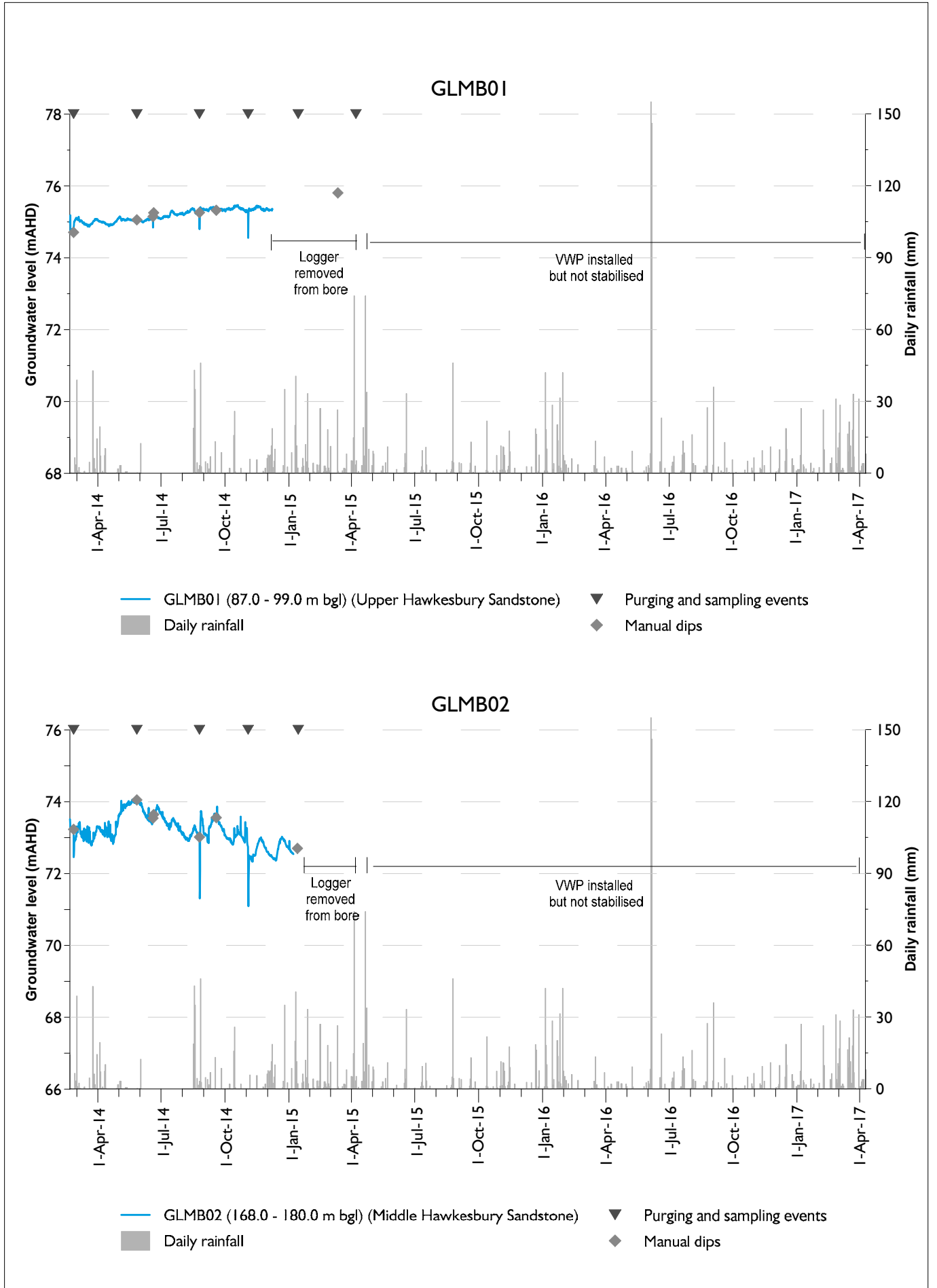
Camden Gas Project  
 2016 - 2017 Water Monitoring Report  
 Figure A.1

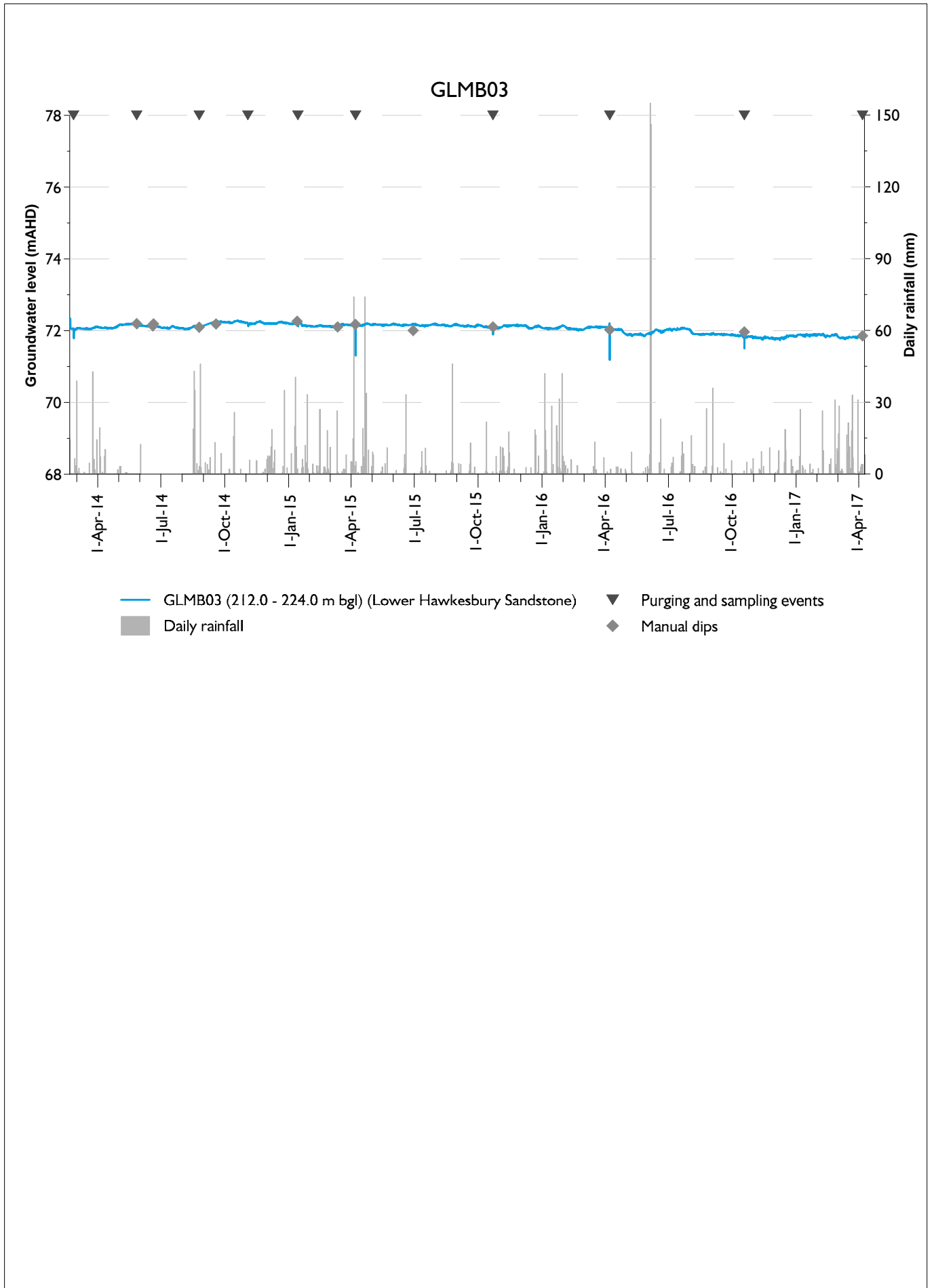




**MPMB03 and MPMB04 hydrographs**

Camden Gas Project  
 2016 - 2017 Water Monitoring Report  
 Figure A.2







## Appendix B

### Water quality summary table

---







## Appendix C

### ALS laboratory reports

---



## CERTIFICATE OF ANALYSIS

**Work Order** : **ES1623502**  
**Client** : **EMM CONSULTING PTY LTD**  
**Contact** : **MS CAROLINA SARDELLA**  
**Address** : **Ground Floor Suite 1 20 Chandos Street  
St Leonards NSW 2065**  
**Telephone** : **+61 02 9493 9500**  
**Project** : **AGL CAMDEN GAS PROJECT**  
**Order number** : **----**  
**C-O-C number** : **----**  
**Sampler** : **CAROLINA SARDELLA, SEAN CASSIDY**  
**Site** : **----**  
**Quote number** : **----**  
**No. of samples received** : **8**  
**No. of samples analysed** : **8**

**Page** : 1 of 13  
**Laboratory** : Environmental Division Sydney  
**Contact** :  
**Address** : 277-289 Woodpark Road Smithfield NSW Australia 2164  
**Telephone** : +61-2-8784 8555  
**Date Samples Received** : 19-Oct-2016 10:55  
**Date Analysis Commenced** : 19-Oct-2016  
**Issue Date** : 25-Oct-2016 15:17



This report supersedes any previous report(s) with this reference. Results apply to the sample(s) as submitted. This document shall not be reproduced, except in full.

This Certificate of Analysis contains the following information:

- General Comments
- Analytical Results
- Surrogate Control Limits

**Additional information pertinent to this report will be found in the following separate attachments: Quality Control Report, QA/QC Compliance Assessment to assist with Quality Review and Sample Receipt Notification.**

### Signatories

This document has been electronically signed by the authorized signatories below. Electronic signing is carried out in compliance with procedures specified in 21 CFR Part 11.

<i>Signatories</i>	<i>Position</i>	<i>Accreditation Category</i>
Ankit Joshi	Inorganic Chemist	Sydney Inorganics, Smithfield, NSW
Celine Conceicao	Senior Spectroscopist	Sydney Inorganics, Smithfield, NSW
Edwandy Fadjjar	Organic Coordinator	Sydney Organics, Smithfield, NSW
RICHARD TEA	Lab technician	Sydney Inorganics, Smithfield, NSW



## General Comments

The analytical procedures used by the Environmental Division have been developed from established internationally recognized procedures such as those published by the USEPA, APHA, AS and NEPM. In house developed procedures are employed in the absence of documented standards or by client request.

Where moisture determination has been performed, results are reported on a dry weight basis.

Where a reported less than (<) result is higher than the LOR, this may be due to primary sample extract/digestate dilution and/or insufficient sample for analysis.

Where the LOR of a reported result differs from standard LOR, this may be due to high moisture content, insufficient sample (reduced weight employed) or matrix interference.

When sampling time information is not provided by the client, sampling dates are shown without a time component. In these instances, the time component has been assumed by the laboratory for processing purposes.

Where a result is required to meet compliance limits the associated uncertainty must be considered. Refer to the ALS Contact for details.

Key : CAS Number = CAS registry number from database maintained by Chemical Abstracts Services. The Chemical Abstracts Service is a division of the American Chemical Society.

LOR = Limit of reporting

^ = This result is computed from individual analyte detections at or above the level of reporting

∅ = ALS is not NATA accredited for these tests.

~ = Indicates an estimated value.

- ED041G: LOR raised for (Sulfate analysis) on sample no:1, due to sample matrix.
- Poor spike recovery for Total Cyanide analysis due to matrix interferences(confirmed by re-analysis).
- EK071G: It has been noted that Reactive P is greater than Total P for sample no 1, however this difference is within the limits of experimental variation.
- Benzo(a)pyrene Toxicity Equivalent Quotient (TEQ) is the sum total of the concentration of the eight carcinogenic PAHs multiplied by their Toxicity Equivalence Factor (TEF) relative to Benzo(a)pyrene. TEF values are provided in brackets as follows: Benz(a)anthracene (0.1), Chrysene (0.01), Benzo(b+j) & Benzo(k)fluoranthene (0.1), Benzo(a)pyrene (1.0), Indeno(1.2.3.cd)pyrene (0.1), Dibenz(a.h)anthracene (1.0), Benzo(g.h.i)perylene (0.01). Less than LOR results for 'TEQ Zero' are treated as zero.





## Analytical Results

Sub-Matrix: WATER (Matrix: WATER)				Client sample ID	GLMB03	MPMB01	MPMB02	MPMB03	MPMB04
Client sampling date / time				18-Oct-2016 10:30	18-Oct-2016 13:15	18-Oct-2016 12:40	18-Oct-2016 11:45	18-Oct-2016 12:30	
Compound	CAS Number	LOR	Unit	ES1623502-001	ES1623502-002	ES1623502-003	ES1623502-004	ES1623502-005	
				Result	Result	Result	Result	Result	
<b>EA005P: pH by PC Titrator</b>									
pH Value	----	0.01	pH Unit	8.22	6.44	7.38	7.99	9.65	
<b>EA010P: Conductivity by PC Titrator</b>									
Electrical Conductivity @ 25°C	----	1	µS/cm	4840	851	732	1010	619	
<b>EA015: Total Dissolved Solids dried at 180 ± 5 °C</b>									
Total Dissolved Solids @180°C	----	10	mg/L	2880	527	408	551	371	
<b>EA025: Total Suspended Solids dried at 104 ± 2°C</b>									
Suspended Solids (SS)	----	5	mg/L	6	37	915	30	8	
<b>ED009: Anions</b>									
Bromide	24959-67-9	0.01	mg/L	1.24	0.475	0.258	0.123	0.167	
<b>ED037P: Alkalinity by PC Titrator</b>									
Hydroxide Alkalinity as CaCO3	DMO-210-001	1	mg/L	<1	<1	<1	<1	<1	
Carbonate Alkalinity as CaCO3	3812-32-6	1	mg/L	<1	<1	<1	<1	80	
Bicarbonate Alkalinity as CaCO3	71-52-3	1	mg/L	1790	21	144	431	72	
Total Alkalinity as CaCO3	----	1	mg/L	1790	21	144	431	152	
<b>ED041G: Sulfate (Turbidimetric) as SO4 2- by DA</b>									
Sulfate as SO4 - Turbidimetric	14808-79-8	1	mg/L	<10	3	6	<1	<1	
<b>ED045G: Chloride by Discrete Analyser</b>									
Chloride	16887-00-6	1	mg/L	654	267	143	68	87	
<b>ED093F: Dissolved Major Cations</b>									
Calcium	7440-70-2	1	mg/L	97	13	30	89	4	
Magnesium	7439-95-4	1	mg/L	65	24	30	23	<1	
Sodium	7440-23-5	1	mg/L	967	121	78	113	131	
Potassium	7440-09-7	1	mg/L	35	2	3	12	7	
<b>EG020F: Dissolved Metals by ICP-MS</b>									
Aluminium	7429-90-5	0.01	mg/L	<0.01	0.02	0.02	<0.01	0.04	
Antimony	7440-36-0	0.001	mg/L	<0.001	<0.001	<0.001	<0.001	<0.001	
Arsenic	7440-38-2	0.001	mg/L	0.039	<0.001	0.012	0.033	0.003	
Boron	7440-42-8	0.05	mg/L	<0.05	<0.05	<0.05	<0.05	<0.05	
Barium	7440-39-3	0.001	mg/L	16.1	0.682	0.489	3.09	0.320	
Beryllium	7440-41-7	0.001	mg/L	<0.001	<0.001	<0.001	<0.001	<0.001	
Cadmium	7440-43-9	0.0001	mg/L	<0.0001	<0.0001	<0.0001	<0.0001	<0.0001	
Cobalt	7440-48-4	0.001	mg/L	<0.001	0.045	0.002	0.003	<0.001	
Chromium	7440-47-3	0.001	mg/L	<0.001	<0.001	<0.001	<0.001	<0.001	
Copper	7440-50-8	0.001	mg/L	<0.001	0.006	<0.001	<0.001	<0.001	



## Analytical Results

Sub-Matrix: WATER (Matrix: WATER)				Client sample ID	GLMB03	MPMB01	MPMB02	MPMB03	MPMB04
Client sampling date / time				18-Oct-2016 10:30	18-Oct-2016 13:15	18-Oct-2016 12:40	18-Oct-2016 11:45	18-Oct-2016 12:30	
Compound	CAS Number	LOR	Unit	ES1623502-001	ES1623502-002	ES1623502-003	ES1623502-004	ES1623502-005	
				Result	Result	Result	Result	Result	
<b>EG020F: Dissolved Metals by ICP-MS - Continued</b>									
Manganese	7439-96-5	0.001	mg/L	0.014	0.503	0.183	0.161	0.002	
Nickel	7440-02-0	0.001	mg/L	<0.001	0.016	0.002	<0.001	<0.001	
Lead	7439-92-1	0.001	mg/L	<0.001	<0.001	<0.001	<0.001	<0.001	
Selenium	7782-49-2	0.01	mg/L	<0.01	<0.01	<0.01	<0.01	<0.01	
Vanadium	7440-62-2	0.01	mg/L	<0.01	<0.01	<0.01	<0.01	<0.01	
Zinc	7440-66-6	0.005	mg/L	0.135	0.047	0.005	0.007	0.083	
Molybdenum	7439-98-7	0.001	mg/L	0.004	<0.001	<0.001	<0.001	0.006	
Strontium	7440-24-6	0.001	mg/L	3.73	0.140	0.299	0.820	0.079	
Uranium	7440-61-1	0.001	mg/L	<0.001	<0.001	<0.001	<0.001	<0.001	
Iron	7439-89-6	0.05	mg/L	0.46	0.70	4.53	4.11	<0.05	
Bromine	7726-95-6	0.1	mg/L	1.4	0.5	0.3	0.1	0.2	
<b>EG035F: Dissolved Mercury by FIMS</b>									
Mercury	7439-97-6	0.0001	mg/L	<0.0001	<0.0001	<0.0001	<0.0001	<0.0001	
<b>EG052G: Silica by Discrete Analyser</b>									
Reactive Silica	----	0.05	mg/L	18.4	18.1	11.1	8.76	5.77	
<b>EK026SF: Total CN by Segmented Flow Analyser</b>									
Total Cyanide	57-12-5	0.004	mg/L	<0.004	<0.004	<0.004	<0.004	<0.004	
<b>EK040P: Fluoride by PC Titrator</b>									
Fluoride	16984-48-8	0.1	mg/L	0.1	<0.1	0.1	0.1	0.5	
<b>EK055G: Ammonia as N by Discrete Analyser</b>									
Ammonia as N	7664-41-7	0.01	mg/L	3.11	<0.01	0.09	0.94	0.93	
<b>EK057G: Nitrite as N by Discrete Analyser</b>									
Nitrite as N	14797-65-0	0.01	mg/L	<0.01	<0.01	<0.01	<0.01	<0.01	
<b>EK058G: Nitrate as N by Discrete Analyser</b>									
Nitrate as N	14797-55-8	0.01	mg/L	<0.01	0.22	<0.01	<0.01	<0.01	
<b>EK059G: Nitrite plus Nitrate as N (NOx) by Discrete Analyser</b>									
Nitrite + Nitrate as N	----	0.01	mg/L	<0.01	0.22	<0.01	<0.01	<0.01	
<b>EK067G: Total Phosphorus as P by Discrete Analyser</b>									
Total Phosphorus as P	----	0.01	mg/L	0.02	0.01	0.18	0.05	0.02	
<b>EK071G: Reactive Phosphorus as P by discrete analyser</b>									
Reactive Phosphorus as P	14265-44-2	0.01	mg/L	0.07	<0.01	<0.01	<0.01	0.01	
<b>EN055: Ionic Balance</b>									
Total Anions	----	0.01	meq/L	54.2	8.01	7.04	10.5	5.49	



## Analytical Results

Sub-Matrix: WATER (Matrix: WATER)				Client sample ID	GLMB03	MPMB01	MPMB02	MPMB03	MPMB04
Client sampling date / time				18-Oct-2016 10:30	18-Oct-2016 13:15	18-Oct-2016 12:40	18-Oct-2016 11:45	18-Oct-2016 12:30	
Compound	CAS Number	LOR	Unit	ES1623502-001	ES1623502-002	ES1623502-003	ES1623502-004	ES1623502-005	
				Result	Result	Result	Result	Result	
<b>EN055: Ionic Balance - Continued</b>									
Total Cations	----	0.01	meq/L	53.1	7.94	7.44	11.6	6.08	
Ionic Balance	----	0.01	%	0.99	0.47	2.76	4.65	5.06	
<b>EP005: Total Organic Carbon (TOC)</b>									
Total Organic Carbon	----	1	mg/L	<1	1	2	<1	7	
<b>EP033: C1 - C4 Hydrocarbon Gases</b>									
Methane	74-82-8	10	µg/L	36400	30	242	54300	39600	
Ethene	74-85-1	10	µg/L	<10	<10	<10	<10	<10	
Ethane	74-84-0	10	µg/L	182	<10	<10	<10	<10	
Propene	115-07-1	10	µg/L	<10	<10	<10	<10	<10	
Propane	74-98-6	10	µg/L	41	<10	<10	<10	<10	
Butene	25167-67-3	10	µg/L	<10	<10	<10	<10	<10	
Butane	106-97-8	10	µg/L	<10	<10	<10	<10	<10	
<b>EP075(SIM)A: Phenolic Compounds</b>									
Phenol	108-95-2	1	µg/L	<1.0	<1.0	<1.0	<1.0	2.0	
2-Chlorophenol	95-57-8	1	µg/L	<1.0	<1.0	<1.0	<1.0	<1.0	
2-Methylphenol	95-48-7	1	µg/L	<1.0	<1.0	<1.0	<1.0	<1.0	
3- & 4-Methylphenol	1319-77-3	2	µg/L	<2.0	<2.0	<2.0	<2.0	<2.0	
2-Nitrophenol	88-75-5	1	µg/L	<1.0	<1.0	<1.0	<1.0	<1.0	
2,4-Dimethylphenol	105-67-9	1	µg/L	<1.0	<1.0	<1.0	<1.0	<1.0	
2,4-Dichlorophenol	120-83-2	1	µg/L	<1.0	<1.0	<1.0	<1.0	<1.0	
2,6-Dichlorophenol	87-65-0	1	µg/L	<1.0	<1.0	<1.0	<1.0	<1.0	
4-Chloro-3-methylphenol	59-50-7	1	µg/L	<1.0	<1.0	<1.0	<1.0	<1.0	
2,4,6-Trichlorophenol	88-06-2	1	µg/L	<1.0	<1.0	<1.0	<1.0	<1.0	
2,4,5-Trichlorophenol	95-95-4	1	µg/L	<1.0	<1.0	<1.0	<1.0	<1.0	
Pentachlorophenol	87-86-5	2	µg/L	<2.0	<2.0	<2.0	<2.0	<2.0	
<b>EP075(SIM)B: Polynuclear Aromatic Hydrocarbons</b>									
Naphthalene	91-20-3	1	µg/L	<1.0	<1.0	<1.0	<1.0	<1.0	
Acenaphthylene	208-96-8	1	µg/L	<1.0	<1.0	<1.0	<1.0	<1.0	
Acenaphthene	83-32-9	1	µg/L	<1.0	<1.0	<1.0	<1.0	<1.0	
Fluorene	86-73-7	1	µg/L	<1.0	<1.0	<1.0	<1.0	<1.0	
Phenanthrene	85-01-8	1	µg/L	<1.0	<1.0	<1.0	<1.0	<1.0	
Anthracene	120-12-7	1	µg/L	<1.0	<1.0	<1.0	<1.0	<1.0	
Fluoranthene	206-44-0	1	µg/L	<1.0	<1.0	<1.0	<1.0	<1.0	
Pyrene	129-00-0	1	µg/L	<1.0	<1.0	<1.0	<1.0	<1.0	



## Analytical Results

Sub-Matrix: WATER (Matrix: WATER)				Client sample ID	GLMB03	MPMB01	MPMB02	MPMB03	MPMB04
Client sampling date / time				18-Oct-2016 10:30	18-Oct-2016 13:15	18-Oct-2016 12:40	18-Oct-2016 11:45	18-Oct-2016 12:30	
Compound	CAS Number	LOR	Unit	ES1623502-001	ES1623502-002	ES1623502-003	ES1623502-004	ES1623502-005	
				Result	Result	Result	Result	Result	
<b>EP075(SIM)B: Polynuclear Aromatic Hydrocarbons - Continued</b>									
Benz(a)anthracene	56-55-3	1	µg/L	<1.0	<1.0	<1.0	<1.0	<1.0	
Chrysene	218-01-9	1	µg/L	<1.0	<1.0	<1.0	<1.0	<1.0	
Benzo(b+j)fluoranthene	205-99-2 205-82-3	1	µg/L	<1.0	<1.0	<1.0	<1.0	<1.0	
Benzo(k)fluoranthene	207-08-9	1	µg/L	<1.0	<1.0	<1.0	<1.0	<1.0	
Benzo(a)pyrene	50-32-8	0.5	µg/L	<0.5	<0.5	<0.5	<0.5	<0.5	
Indeno(1.2.3.cd)pyrene	193-39-5	1	µg/L	<1.0	<1.0	<1.0	<1.0	<1.0	
Dibenz(a,h)anthracene	53-70-3	1	µg/L	<1.0	<1.0	<1.0	<1.0	<1.0	
Benzo(g,h,i)perylene	191-24-2	1	µg/L	<1.0	<1.0	<1.0	<1.0	<1.0	
^ Sum of polycyclic aromatic hydrocarbons	----	0.5	µg/L	<0.5	<0.5	<0.5	<0.5	<0.5	
^ Benzo(a)pyrene TEQ (zero)	----	0.5	µg/L	<0.5	<0.5	<0.5	<0.5	<0.5	
<b>EP080/071: Total Petroleum Hydrocarbons</b>									
C6 - C9 Fraction	----	20	µg/L	170	<20	<20	<20	60	
C10 - C14 Fraction	----	50	µg/L	<50	<50	<50	<50	<50	
C15 - C28 Fraction	----	100	µg/L	<100	<100	<100	<100	<100	
C29 - C36 Fraction	----	50	µg/L	<50	<50	<50	<50	<50	
^ C10 - C36 Fraction (sum)	----	50	µg/L	<50	<50	<50	<50	<50	
<b>EP080/071: Total Recoverable Hydrocarbons - NEPM 2013 Fractions</b>									
C6 - C10 Fraction	C6_C10	20	µg/L	170	<20	<20	<20	60	
^ C6 - C10 Fraction minus BTEX (F1)	C6_C10-BTEX	20	µg/L	50	<20	<20	<20	<20	
>C10 - C16 Fraction	----	100	µg/L	<100	<100	<100	<100	<100	
>C16 - C34 Fraction	----	100	µg/L	<100	<100	<100	<100	<100	
>C34 - C40 Fraction	----	100	µg/L	<100	<100	<100	<100	<100	
^ >C10 - C40 Fraction (sum)	----	100	µg/L	<100	<100	<100	<100	<100	
^ >C10 - C16 Fraction minus Naphthalene (F2)	----	100	µg/L	<100	<100	<100	<100	<100	
<b>EP080: BTEXN</b>									
Benzene	71-43-2	1	µg/L	<1	<1	<1	<1	<1	
Toluene	108-88-3	2	µg/L	122	<2	<2	<2	48	
Ethylbenzene	100-41-4	2	µg/L	<2	<2	<2	<2	<2	
meta- & para-Xylene	108-38-3 106-42-3	2	µg/L	<2	<2	<2	<2	<2	
ortho-Xylene	95-47-6	2	µg/L	<2	<2	<2	<2	<2	
^ Total Xylenes	1330-20-7	2	µg/L	<2	<2	<2	<2	<2	
^ Sum of BTEX	----	1	µg/L	122	<1	<1	<1	48	
Naphthalene	91-20-3	5	µg/L	<5	<5	<5	<5	<5	



## Analytical Results

Sub-Matrix: WATER (Matrix: WATER)				Client sample ID	GLMB03	MPMB01	MPMB02	MPMB03	MPMB04
Client sampling date / time				18-Oct-2016 10:30	18-Oct-2016 13:15	18-Oct-2016 12:40	18-Oct-2016 11:45	18-Oct-2016 12:30	
Compound	CAS Number	LOR	Unit	ES1623502-001	ES1623502-002	ES1623502-003	ES1623502-004	ES1623502-005	
				Result	Result	Result	Result	Result	
<b>EP080: BTEXN - Continued</b>									
<b>EP075(SIM)S: Phenolic Compound Surrogates</b>									
Phenol-d6	13127-88-3	1	%	20.3	20.0	20.9	17.4	17.2	
2-Chlorophenol-D4	93951-73-6	1	%	58.5	60.4	60.5	47.9	38.5	
2,4,6-Tribromophenol	118-79-6	1	%	54.1	51.1	61.0	49.1	38.1	
<b>EP075(SIM)T: PAH Surrogates</b>									
2-Fluorobiphenyl	321-60-8	1	%	80.4	75.3	83.1	63.4	72.5	
Anthracene-d10	1719-06-8	1	%	71.8	65.6	74.6	63.1	70.3	
4-Terphenyl-d14	1718-51-0	1	%	84.0	70.5	83.8	68.6	85.7	
<b>EP080S: TPH(V)/BTEX Surrogates</b>									
1,2-Dichloroethane-D4	17060-07-0	2	%	107	103	110	111	122	
Toluene-D8	2037-26-5	2	%	117	106	112	113	125	
4-Bromofluorobenzene	460-00-4	2	%	128	108	116	114	118	



## Analytical Results

Sub-Matrix: WATER (Matrix: WATER)				Client sample ID	NR	QA1	TB	----	----
Client sampling date / time				18-Oct-2016 13:45	[18-Oct-2016]	[18-Oct-2016]	----	----	
Compound	CAS Number	LOR	Unit	ES1623502-006	ES1623502-007	ES1623502-008	-----	-----	
				Result	Result	Result	----	----	
<b>EA005P: pH by PC Titrator</b>									
pH Value	----	0.01	pH Unit	<b>7.64</b>	<b>7.40</b>	----	----	----	
<b>EA010P: Conductivity by PC Titrator</b>									
Electrical Conductivity @ 25°C	----	1	µS/cm	<b>168</b>	<b>728</b>	----	----	----	
<b>EA015: Total Dissolved Solids dried at 180 ± 5 °C</b>									
Total Dissolved Solids @180°C	----	10	mg/L	<b>98</b>	<b>414</b>	----	----	----	
<b>EA025: Total Suspended Solids dried at 104 ± 2°C</b>									
Suspended Solids (SS)	----	5	mg/L	<5	<b>889</b>	----	----	----	
<b>ED009: Anions</b>									
Bromide	24959-67-9	0.01	mg/L	<b>0.060</b>	<b>0.255</b>	----	----	----	
<b>ED037P: Alkalinity by PC Titrator</b>									
Hydroxide Alkalinity as CaCO3	DMO-210-001	1	mg/L	<1	<1	----	----	----	
Carbonate Alkalinity as CaCO3	3812-32-6	1	mg/L	<1	<1	----	----	----	
Bicarbonate Alkalinity as CaCO3	71-52-3	1	mg/L	<b>22</b>	<b>144</b>	----	----	----	
Total Alkalinity as CaCO3	----	1	mg/L	<b>22</b>	<b>144</b>	----	----	----	
<b>ED041G: Sulfate (Turbidimetric) as SO4 2- by DA</b>									
Sulfate as SO4 - Turbidimetric	14808-79-8	1	mg/L	<b>6</b>	<b>6</b>	----	----	----	
<b>ED045G: Chloride by Discrete Analyser</b>									
Chloride	16887-00-6	1	mg/L	<b>33</b>	<b>142</b>	----	----	----	
<b>ED093F: Dissolved Major Cations</b>									
Calcium	7440-70-2	1	mg/L	<b>3</b>	<b>30</b>	----	----	----	
Magnesium	7439-95-4	1	mg/L	<b>3</b>	<b>29</b>	----	----	----	
Sodium	7440-23-5	1	mg/L	<b>16</b>	<b>77</b>	----	----	----	
Potassium	7440-09-7	1	mg/L	<b>1</b>	<b>3</b>	----	----	----	
<b>EG020F: Dissolved Metals by ICP-MS</b>									
Aluminium	7429-90-5	0.01	mg/L	<b>0.01</b>	<b>0.02</b>	----	----	----	
Antimony	7440-36-0	0.001	mg/L	<0.001	<0.001	----	----	----	
Arsenic	7440-38-2	0.001	mg/L	<0.001	<b>0.012</b>	----	----	----	
Boron	7440-42-8	0.05	mg/L	<0.05	<0.05	----	----	----	
Barium	7440-39-3	0.001	mg/L	<b>0.028</b>	<b>0.494</b>	----	----	----	
Beryllium	7440-41-7	0.001	mg/L	<0.001	<0.001	----	----	----	
Cadmium	7440-43-9	0.0001	mg/L	<0.0001	<0.0001	----	----	----	
Cobalt	7440-48-4	0.001	mg/L	<0.001	<b>0.002</b>	----	----	----	
Chromium	7440-47-3	0.001	mg/L	<0.001	<0.001	----	----	----	
Copper	7440-50-8	0.001	mg/L	<b>0.007</b>	<b>0.003</b>	----	----	----	



## Analytical Results

Sub-Matrix: WATER (Matrix: WATER)				Client sample ID	NR	QA1	TB	----	----
Client sampling date / time				18-Oct-2016 13:45	[18-Oct-2016]	[18-Oct-2016]	----	----	
Compound	CAS Number	LOR	Unit	ES1623502-006	ES1623502-007	ES1623502-008	-----	-----	
				Result	Result	Result	----	----	
<b>EG020F: Dissolved Metals by ICP-MS - Continued</b>									
Manganese	7439-96-5	0.001	mg/L	0.017	0.173	----	----	----	
Nickel	7440-02-0	0.001	mg/L	<0.001	0.002	----	----	----	
Lead	7439-92-1	0.001	mg/L	<0.001	<0.001	----	----	----	
Selenium	7782-49-2	0.01	mg/L	<0.01	<0.01	----	----	----	
Vanadium	7440-62-2	0.01	mg/L	<0.01	<0.01	----	----	----	
Zinc	7440-66-6	0.005	mg/L	0.007	0.008	----	----	----	
Molybdenum	7439-98-7	0.001	mg/L	<0.001	<0.001	----	----	----	
Strontium	7440-24-6	0.001	mg/L	0.028	0.294	----	----	----	
Uranium	7440-61-1	0.001	mg/L	<0.001	<0.001	----	----	----	
Iron	7439-89-6	0.05	mg/L	0.08	4.25	----	----	----	
Bromine	7726-95-6	0.1	mg/L	<0.1	0.3	----	----	----	
<b>EG035F: Dissolved Mercury by FIMS</b>									
Mercury	7439-97-6	0.0001	mg/L	<0.0001	<0.0001	----	----	----	
<b>EG052G: Silica by Discrete Analyser</b>									
Reactive Silica	----	0.05	mg/L	1.71	11.2	----	----	----	
<b>EK026SF: Total CN by Segmented Flow Analyser</b>									
Total Cyanide	57-12-5	0.004	mg/L	<0.004	<0.004	----	----	----	
<b>EK040P: Fluoride by PC Titrator</b>									
Fluoride	16984-48-8	0.1	mg/L	<0.1	0.1	----	----	----	
<b>EK055G: Ammonia as N by Discrete Analyser</b>									
Ammonia as N	7664-41-7	0.01	mg/L	0.01	0.08	----	----	----	
<b>EK057G: Nitrite as N by Discrete Analyser</b>									
Nitrite as N	14797-65-0	0.01	mg/L	<0.01	<0.01	----	----	----	
<b>EK058G: Nitrate as N by Discrete Analyser</b>									
Nitrate as N	14797-55-8	0.01	mg/L	0.11	<0.01	----	----	----	
<b>EK059G: Nitrite plus Nitrate as N (NOx) by Discrete Analyser</b>									
Nitrite + Nitrate as N	----	0.01	mg/L	0.11	<0.01	----	----	----	
<b>EK067G: Total Phosphorus as P by Discrete Analyser</b>									
Total Phosphorus as P	----	0.01	mg/L	<0.01	0.20	----	----	----	
<b>EK071G: Reactive Phosphorus as P by discrete analyser</b>									
Reactive Phosphorus as P	14265-44-2	0.01	mg/L	<0.01	<0.01	----	----	----	
<b>EN055: Ionic Balance</b>									
Total Anions	----	0.01	meq/L	1.50	7.01	----	----	----	



## Analytical Results

Sub-Matrix: WATER (Matrix: WATER)				Client sample ID	NR	QA1	TB	----	----
Client sampling date / time				18-Oct-2016 13:45	[18-Oct-2016]	[18-Oct-2016]	----	----	
Compound	CAS Number	LOR	Unit	ES1623502-006	ES1623502-007	ES1623502-008	-----	-----	
				Result	Result	Result	----	----	
<b>EN055: Ionic Balance - Continued</b>									
Total Cations	----	0.01	meq/L	1.12	7.31	----	----	----	
Ionic Balance	----	0.01	%	----	2.11	----	----	----	
<b>EP005: Total Organic Carbon (TOC)</b>									
Total Organic Carbon	----	1	mg/L	4	<1	----	----	----	
<b>EP033: C1 - C4 Hydrocarbon Gases</b>									
Methane	74-82-8	10	µg/L	<10	247	----	----	----	
Ethene	74-85-1	10	µg/L	<10	<10	----	----	----	
Ethane	74-84-0	10	µg/L	<10	<10	----	----	----	
Propene	115-07-1	10	µg/L	<10	<10	----	----	----	
Propane	74-98-6	10	µg/L	<10	<10	----	----	----	
Butene	25167-67-3	10	µg/L	<10	<10	----	----	----	
Butane	106-97-8	10	µg/L	<10	<10	----	----	----	
<b>EP075(SIM)A: Phenolic Compounds</b>									
Phenol	108-95-2	1	µg/L	<1.0	<1.0	----	----	----	
2-Chlorophenol	95-57-8	1	µg/L	<1.0	<1.0	----	----	----	
2-Methylphenol	95-48-7	1	µg/L	<1.0	<1.0	----	----	----	
3- & 4-Methylphenol	1319-77-3	2	µg/L	<2.0	<2.0	----	----	----	
2-Nitrophenol	88-75-5	1	µg/L	<1.0	<1.0	----	----	----	
2,4-Dimethylphenol	105-67-9	1	µg/L	<1.0	<1.0	----	----	----	
2,4-Dichlorophenol	120-83-2	1	µg/L	<1.0	<1.0	----	----	----	
2,6-Dichlorophenol	87-65-0	1	µg/L	<1.0	<1.0	----	----	----	
4-Chloro-3-methylphenol	59-50-7	1	µg/L	<1.0	<1.0	----	----	----	
2,4,6-Trichlorophenol	88-06-2	1	µg/L	<1.0	<1.0	----	----	----	
2,4,5-Trichlorophenol	95-95-4	1	µg/L	<1.0	<1.0	----	----	----	
Pentachlorophenol	87-86-5	2	µg/L	<2.0	<2.0	----	----	----	
<b>EP075(SIM)B: Polynuclear Aromatic Hydrocarbons</b>									
Naphthalene	91-20-3	1	µg/L	<1.0	<1.0	----	----	----	
Acenaphthylene	208-96-8	1	µg/L	<1.0	<1.0	----	----	----	
Acenaphthene	83-32-9	1	µg/L	<1.0	<1.0	----	----	----	
Fluorene	86-73-7	1	µg/L	<1.0	<1.0	----	----	----	
Phenanthrene	85-01-8	1	µg/L	<1.0	<1.0	----	----	----	
Anthracene	120-12-7	1	µg/L	<1.0	<1.0	----	----	----	
Fluoranthene	206-44-0	1	µg/L	<1.0	<1.0	----	----	----	
Pyrene	129-00-0	1	µg/L	<1.0	<1.0	----	----	----	





## Analytical Results

Sub-Matrix: WATER (Matrix: WATER)				Client sample ID	NR	QA1	TB	----	----
Client sampling date / time				18-Oct-2016 13:45	[18-Oct-2016]	[18-Oct-2016]	----	----	
Compound	CAS Number	LOR	Unit	ES1623502-006	ES1623502-007	ES1623502-008	-----	-----	
				Result	Result	Result	----	----	
<b>EP075(SIM)B: Polynuclear Aromatic Hydrocarbons - Continued</b>									
Benz(a)anthracene	56-55-3	1	µg/L	<1.0	<1.0	----	----	----	
Chrysene	218-01-9	1	µg/L	<1.0	<1.0	----	----	----	
Benzo(b+)fluoranthene	205-99-2 205-82-3	1	µg/L	<1.0	<1.0	----	----	----	
Benzo(k)fluoranthene	207-08-9	1	µg/L	<1.0	<1.0	----	----	----	
Benzo(a)pyrene	50-32-8	0.5	µg/L	<0.5	<0.5	----	----	----	
Indeno(1.2.3.cd)pyrene	193-39-5	1	µg/L	<1.0	<1.0	----	----	----	
Dibenz(a.h)anthracene	53-70-3	1	µg/L	<1.0	<1.0	----	----	----	
Benzo(g.h.i)perylene	191-24-2	1	µg/L	<1.0	<1.0	----	----	----	
^ Sum of polycyclic aromatic hydrocarbons	----	0.5	µg/L	<0.5	<0.5	----	----	----	
^ Benzo(a)pyrene TEQ (zero)	----	0.5	µg/L	<0.5	<0.5	----	----	----	
<b>EP080/071: Total Petroleum Hydrocarbons</b>									
C6 - C9 Fraction	----	20	µg/L	<20	<20	<20	----	----	
C10 - C14 Fraction	----	50	µg/L	<50	<50	----	----	----	
C15 - C28 Fraction	----	100	µg/L	<100	<100	----	----	----	
C29 - C36 Fraction	----	50	µg/L	<50	<50	----	----	----	
^ C10 - C36 Fraction (sum)	----	50	µg/L	<50	<50	----	----	----	
<b>EP080/071: Total Recoverable Hydrocarbons - NEPM 2013 Fractions</b>									
C6 - C10 Fraction	C6_C10	20	µg/L	<20	<20	<20	----	----	
^ C6 - C10 Fraction minus BTEX (F1)	C6_C10-BTEX	20	µg/L	<20	<20	<20	----	----	
>C10 - C16 Fraction	----	100	µg/L	<100	<100	----	----	----	
>C16 - C34 Fraction	----	100	µg/L	<100	<100	----	----	----	
>C34 - C40 Fraction	----	100	µg/L	<100	<100	----	----	----	
^ >C10 - C40 Fraction (sum)	----	100	µg/L	<100	<100	----	----	----	
^ >C10 - C16 Fraction minus Naphthalene (F2)	----	100	µg/L	<100	<100	----	----	----	
<b>EP080: BTEXN</b>									
Benzene	71-43-2	1	µg/L	<1	<1	<1	----	----	
Toluene	108-88-3	2	µg/L	<2	<2	<2	----	----	
Ethylbenzene	100-41-4	2	µg/L	<2	<2	<2	----	----	
meta- & para-Xylene	108-38-3 106-42-3	2	µg/L	<2	<2	<2	----	----	
ortho-Xylene	95-47-6	2	µg/L	<2	<2	<2	----	----	
^ Total Xylenes	1330-20-7	2	µg/L	<2	<2	<2	----	----	
^ Sum of BTEX	----	1	µg/L	<1	<1	<1	----	----	
Naphthalene	91-20-3	5	µg/L	<5	<5	<5	----	----	



## Analytical Results

Sub-Matrix: WATER (Matrix: WATER)				Client sample ID	NR	QA1	TB	----	----
Client sampling date / time				18-Oct-2016 13:45	[18-Oct-2016]	[18-Oct-2016]	----	----	
Compound	CAS Number	LOR	Unit	ES1623502-006	ES1623502-007	ES1623502-008	-----	-----	
				Result	Result	Result	----	----	
<b>EP080: BTEXN - Continued</b>									
<b>EP075(SIM)S: Phenolic Compound Surrogates</b>									
Phenol-d6	13127-88-3	1	%	17.6	16.6	----	----	----	
2-Chlorophenol-D4	93951-73-6	1	%	43.9	43.1	----	----	----	
2,4,6-Tribromophenol	118-79-6	1	%	41.1	43.5	----	----	----	
<b>EP075(SIM)T: PAH Surrogates</b>									
2-Fluorobiphenyl	321-60-8	1	%	53.8	52.6	----	----	----	
Anthracene-d10	1719-06-8	1	%	55.3	58.4	----	----	----	
4-Terphenyl-d14	1718-51-0	1	%	62.2	67.9	----	----	----	
<b>EP080S: TPH(V)/BTEX Surrogates</b>									
1,2-Dichloroethane-D4	17060-07-0	2	%	108	118	105	----	----	
Toluene-D8	2037-26-5	2	%	108	115	106	----	----	
4-Bromofluorobenzene	460-00-4	2	%	107	109	104	----	----	



## Surrogate Control Limits

Sub-Matrix: WATER		Recovery Limits (%)	
Compound	CAS Number	Low	High
<b>EP075(SIM)S: Phenolic Compound Surrogates</b>			
Phenol-d6	13127-88-3	10	44
2-Chlorophenol-D4	93951-73-6	14	94
2,4,6-Tribromophenol	118-79-6	17	125
<b>EP075(SIM)T: PAH Surrogates</b>			
2-Fluorobiphenyl	321-60-8	20	104
Anthracene-d10	1719-06-8	27	113
4-Terphenyl-d14	1718-51-0	32	112
<b>EP080S: TPH(V)/BTEX Surrogates</b>			
1,2-Dichloroethane-D4	17060-07-0	71	137
Toluene-D8	2037-26-5	79	131
4-Bromofluorobenzene	460-00-4	70	128

## CERTIFICATE OF ANALYSIS

**Work Order** : **ES1708497**  
**Client** : **EMM CONSULTING PTY LTD**  
**Contact** : **MS CAROLINA SARDELLA**  
**Address** : **Ground Floor Suite 1 20 Chandos Street**  
**St Leonards NSW 2065**  
**Telephone** : **+61 02 9493 9500**  
**Project** : **AGL CAMDEN GAS PROJECT**  
**Order number** : **----**  
**C-O-C number** : **----**  
**Sampler** : **CAROLINA SARDELLA, SUSAN MACOLINO**  
**Site** : **----**  
**Quote number** : **SY/416/16 - AGL Camden Planned Event**  
**No. of samples received** : **7**  
**No. of samples analysed** : **7**

**Page** : 1 of 13  
**Laboratory** : Environmental Division Sydney  
**Contact** : Customer Services ES  
**Address** : 277-289 Woodpark Road Smithfield NSW Australia 2164  
**Telephone** : +61-2-8784 8555  
**Date Samples Received** : 10-Apr-2017 09:35  
**Date Analysis Commenced** : 10-Apr-2017  
**Issue Date** : 19-Apr-2017 16:02



This report supersedes any previous report(s) with this reference. Results apply to the sample(s) as submitted. This document shall not be reproduced, except in full.

This Certificate of Analysis contains the following information:

- General Comments
- Analytical Results
- Surrogate Control Limits

**Additional information pertinent to this report will be found in the following separate attachments: Quality Control Report, QA/QC Compliance Assessment to assist with Quality Review and Sample Receipt Notification.**

### Signatories

This document has been electronically signed by the authorized signatories below. Electronic signing is carried out in compliance with procedures specified in 21 CFR Part 11.

<i>Signatories</i>	<i>Position</i>	<i>Accreditation Category</i>
Ankit Joshi	Inorganic Chemist	Sydney Inorganics, Smithfield, NSW
Celine Conceicao	Senior Spectroscopist	Sydney Inorganics, Smithfield, NSW
Edwandy Fadjar	Organic Coordinator	Sydney Organics, Smithfield, NSW
Raymond Commodore	Instrument Chemist	Sydney Inorganics, Smithfield, NSW



## General Comments

The analytical procedures used by the Environmental Division have been developed from established internationally recognized procedures such as those published by the USEPA, APHA, AS and NEPM. In house developed procedures are employed in the absence of documented standards or by client request.

Where moisture determination has been performed, results are reported on a dry weight basis.

Where a reported less than (<) result is higher than the LOR, this may be due to primary sample extract/digestate dilution and/or insufficient sample for analysis.

Where the LOR of a reported result differs from standard LOR, this may be due to high moisture content, insufficient sample (reduced weight employed) or matrix interference.

When no sampling time is provided, the sampling time will default 00:00 on the date of sampling. If no sampling date is provided, the sampling date will be assumed by the laboratory and displayed in brackets without a time component.

Where a result is required to meet compliance limits the associated uncertainty must be considered. Refer to the ALS Contact for details.

Key : CAS Number = CAS registry number from database maintained by Chemical Abstracts Services. The Chemical Abstracts Service is a division of the American Chemical Society.  
LOR = Limit of reporting  
^ = This result is computed from individual analyte detections at or above the level of reporting  
ø = ALS is not NATA accredited for these tests.  
~ = Indicates an estimated value.

- EG020: Bromine quantification may be unreliable due to its low solubility in acid, leading to variable volatility during measurement by ICPMS.
- EK071G: LOR raised for Reactive P on sample No 1 due to sample matrix
- EK067G: LOR raised for Total P on sample No 1 due to sample matrix
- Benzo(a)pyrene Toxicity Equivalent Quotient (TEQ) is the sum total of the concentration of the eight carcinogenic PAHs multiplied by their Toxicity Equivalence Factor (TEF) relative to Benzo(a)pyrene. TEF values are provided in brackets as follows: Benz(a)anthracene (0.1), Chrysene (0.01), Benzo(b+j) & Benzo(k)fluoranthene (0.1), Benzo(a)pyrene (1.0), Indeno(1.2.3.cd)pyrene (0.1), Dibenz(a.h)anthracene (1.0), Benzo(g.h.i)perylene (0.01). Less than LOR results for 'TEQ Zero' are treated as zero.



## Analytical Results

Sub-Matrix: WATER (Matrix: WATER)				Client sample ID	GLMB03	MPMB01	MPMB02	MPMB03	MPMB04
Client sampling date / time				06-Apr-2017 12:15	06-Apr-2017 11:00	06-Apr-2017 10:30	06-Apr-2017 10:00	06-Apr-2017 09:15	
Compound	CAS Number	LOR	Unit	ES1708497-001	ES1708497-002	ES1708497-003	ES1708497-004	ES1708497-005	
				Result	Result	Result	Result	Result	
<b>EA005P: pH by PC Titrator</b>									
pH Value	----	0.01	pH Unit	7.68	5.64	6.80	7.42	9.94	
<b>EA010P: Conductivity by PC Titrator</b>									
Electrical Conductivity @ 25°C	----	1	µS/cm	5430	916	828	1070	623	
<b>EA015: Total Dissolved Solids dried at 180 ± 5 °C</b>									
Total Dissolved Solids @180°C	----	10	mg/L	3130	560	456	610	374	
<b>EA025: Total Suspended Solids dried at 104 ± 2°C</b>									
Suspended Solids (SS)	----	5	mg/L	<5	24	20	25	12	
<b>ED009: Anions</b>									
Bromide	24959-67-9	0.01	mg/L	1.28	0.507	0.292	0.125	0.168	
<b>ED037P: Alkalinity by PC Titrator</b>									
Hydroxide Alkalinity as CaCO3	DMO-210-001	1	mg/L	<1	<1	<1	<1	<1	
Carbonate Alkalinity as CaCO3	3812-32-6	1	mg/L	<1	<1	<1	<1	115	
Bicarbonate Alkalinity as CaCO3	71-52-3	1	mg/L	1810	19	164	487	46	
Total Alkalinity as CaCO3	----	1	mg/L	1810	19	164	487	161	
<b>ED041G: Sulfate (Turbidimetric) as SO4 2- by DA</b>									
Sulfate as SO4 - Turbidimetric	14808-79-8	1	mg/L	<1	3	5	<1	<1	
<b>ED045G: Chloride by Discrete Analyser</b>									
Chloride	16887-00-6	1	mg/L	631	276	167	66	81	
<b>ED093F: Dissolved Major Cations</b>									
Calcium	7440-70-2	1	mg/L	118	13	29	85	3	
Magnesium	7439-95-4	1	mg/L	75	24	31	23	<1	
Sodium	7440-23-5	1	mg/L	930	116	83	109	118	
Potassium	7440-09-7	1	mg/L	36	1	3	13	7	
<b>EG020F: Dissolved Metals by ICP-MS</b>									
Aluminium	7429-90-5	0.01	mg/L	<0.01	<0.01	<0.01	0.02	<0.01	
Antimony	7440-36-0	0.001	mg/L	<0.001	<0.001	<0.001	<0.001	<0.001	
Arsenic	7440-38-2	0.001	mg/L	0.046	<0.001	0.006	0.015	0.003	
Boron	7440-42-8	0.05	mg/L	<0.05	<0.05	<0.05	<0.05	<0.05	
Barium	7440-39-3	0.001	mg/L	19.7	0.634	0.506	3.11	0.393	
Beryllium	7440-41-7	0.001	mg/L	<0.001	<0.001	<0.001	<0.001	<0.001	
Cadmium	7440-43-9	0.0001	mg/L	<0.0001	<0.0001	<0.0001	<0.0001	<0.0001	
Cobalt	7440-48-4	0.001	mg/L	<0.001	0.041	<0.001	0.002	<0.001	
Chromium	7440-47-3	0.001	mg/L	<0.001	<0.001	<0.001	<0.001	<0.001	
Copper	7440-50-8	0.001	mg/L	<0.001	<0.001	<0.001	<0.001	<0.001	



## Analytical Results

Sub-Matrix: WATER (Matrix: WATER)				Client sample ID	GLMB03	MPMB01	MPMB02	MPMB03	MPMB04
Client sampling date / time				06-Apr-2017 12:15	06-Apr-2017 11:00	06-Apr-2017 10:30	06-Apr-2017 10:00	06-Apr-2017 09:15	
Compound	CAS Number	LOR	Unit	ES1708497-001	ES1708497-002	ES1708497-003	ES1708497-004	ES1708497-005	
				Result	Result	Result	Result	Result	
<b>EG020F: Dissolved Metals by ICP-MS - Continued</b>									
Manganese	7439-96-5	0.001	mg/L	0.018	0.481	0.162	0.113	0.002	
Nickel	7440-02-0	0.001	mg/L	<0.001	0.015	<0.001	<0.001	<0.001	
Lead	7439-92-1	0.001	mg/L	<0.001	<0.001	<0.001	<0.001	<0.001	
Selenium	7782-49-2	0.01	mg/L	<0.01	<0.01	<0.01	<0.01	<0.01	
Vanadium	7440-62-2	0.01	mg/L	<0.01	<0.01	<0.01	<0.01	<0.01	
Zinc	7440-66-6	0.005	mg/L	0.195	0.042	0.015	0.011	0.050	
Molybdenum	7439-98-7	0.001	mg/L	<0.001	<0.001	<0.001	<0.001	0.010	
Strontium	7440-24-6	0.001	mg/L	4.87	0.155	0.353	0.931	0.094	
Uranium	7440-61-1	0.001	mg/L	<0.001	<0.001	<0.001	<0.001	<0.001	
Iron	7439-89-6	0.05	mg/L	0.64	0.19	4.20	4.06	<0.05	
Bromine	7726-95-6	0.1	mg/L	1.4	0.6	0.4	0.2	0.2	
<b>EG035F: Dissolved Mercury by FIMS</b>									
Mercury	7439-97-6	0.0001	mg/L	<0.0001	<0.0001	<0.0001	<0.0001	<0.0001	
<b>EG052G: Silica by Discrete Analyser</b>									
Reactive Silica	----	0.05	mg/L	18.1	15.7	11.7	9.00	6.88	
<b>EK026SF: Total CN by Segmented Flow Analyser</b>									
Total Cyanide	57-12-5	0.004	mg/L	<0.004	<0.004	<0.004	<0.004	<0.004	
<b>EK040P: Fluoride by PC Titrator</b>									
Fluoride	16984-48-8	0.1	mg/L	<0.1	<0.1	<0.1	<0.1	0.5	
<b>EK055G: Ammonia as N by Discrete Analyser</b>									
Ammonia as N	7664-41-7	0.01	mg/L	3.30	0.01	0.13	1.11	0.97	
<b>EK057G: Nitrite as N by Discrete Analyser</b>									
Nitrite as N	14797-65-0	0.01	mg/L	<0.01	<0.01	<0.01	<0.01	<0.01	
<b>EK058G: Nitrate as N by Discrete Analyser</b>									
Nitrate as N	14797-55-8	0.01	mg/L	<0.01	0.28	<0.01	0.07	<0.01	
<b>EK059G: Nitrite plus Nitrate as N (NOx) by Discrete Analyser</b>									
Nitrite + Nitrate as N	----	0.01	mg/L	<0.01	0.28	<0.01	0.07	<0.01	
<b>EK067G: Total Phosphorus as P by Discrete Analyser</b>									
Total Phosphorus as P	----	0.01	mg/L	<0.05	<0.01	0.01	0.01	<0.01	
<b>EK071G: Reactive Phosphorus as P by discrete analyser</b>									
Reactive Phosphorus as P	14265-44-2	0.01	mg/L	<0.05	<0.01	<0.01	<0.01	<0.01	
<b>EN055: Ionic Balance</b>									
Total Anions	----	0.01	meq/L	54.0	8.23	8.09	11.6	5.50	



## Analytical Results

Sub-Matrix: WATER (Matrix: WATER)				Client sample ID	GLMB03	MPMB01	MPMB02	MPMB03	MPMB04
Client sampling date / time				06-Apr-2017 12:15	06-Apr-2017 11:00	06-Apr-2017 10:30	06-Apr-2017 10:00	06-Apr-2017 09:15	
Compound	CAS Number	LOR	Unit	ES1708497-001	ES1708497-002	ES1708497-003	ES1708497-004	ES1708497-005	
				Result	Result	Result	Result	Result	
<b>EN055: Ionic Balance - Continued</b>									
Total Cations	----	0.01	meq/L	53.4	7.70	7.68	11.2	5.46	
Ionic Balance	----	0.01	%	0.49	3.34	2.57	1.68	0.37	
<b>EP005: Total Organic Carbon (TOC)</b>									
Total Organic Carbon	----	1	mg/L	5	<1	<1	<1	5	
<b>EP033: C1 - C4 Hydrocarbon Gases</b>									
Methane	74-82-8	10	µg/L	13800	12	249	28900	41700	
Ethene	74-85-1	10	µg/L	<10	<10	<10	<10	<10	
Ethane	74-84-0	10	µg/L	117	<10	<10	<10	<10	
Propene	115-07-1	10	µg/L	<10	<10	<10	<10	<10	
Propane	74-98-6	10	µg/L	27	<10	<10	<10	<10	
Butene	25167-67-3	10	µg/L	<10	<10	<10	<10	<10	
Butane	106-97-8	10	µg/L	<10	<10	<10	<10	<10	
<b>EP075(SIM)A: Phenolic Compounds</b>									
Phenol	108-95-2	1	µg/L	<1.0	<1.0	<1.0	<1.0	1.9	
2-Chlorophenol	95-57-8	1	µg/L	<1.0	<1.0	<1.0	<1.0	<1.0	
2-Methylphenol	95-48-7	1	µg/L	<1.0	<1.0	<1.0	<1.0	<1.0	
3- & 4-Methylphenol	1319-77-3	2	µg/L	<2.0	<2.0	<2.0	<2.0	<2.0	
2-Nitrophenol	88-75-5	1	µg/L	<1.0	<1.0	<1.0	<1.0	<1.0	
2,4-Dimethylphenol	105-67-9	1	µg/L	<1.0	<1.0	<1.0	<1.0	<1.0	
2,4-Dichlorophenol	120-83-2	1	µg/L	<1.0	<1.0	<1.0	<1.0	<1.0	
2,6-Dichlorophenol	87-65-0	1	µg/L	<1.0	<1.0	<1.0	<1.0	<1.0	
4-Chloro-3-methylphenol	59-50-7	1	µg/L	<1.0	<1.0	<1.0	<1.0	<1.0	
2,4,6-Trichlorophenol	88-06-2	1	µg/L	<1.0	<1.0	<1.0	<1.0	<1.0	
2,4,5-Trichlorophenol	95-95-4	1	µg/L	<1.0	<1.0	<1.0	<1.0	<1.0	
Pentachlorophenol	87-86-5	2	µg/L	<2.0	<2.0	<2.0	<2.0	<2.0	
<b>EP075(SIM)B: Polynuclear Aromatic Hydrocarbons</b>									
Naphthalene	91-20-3	1	µg/L	<1.0	<1.0	<1.0	<1.0	<1.0	
Acenaphthylene	208-96-8	1	µg/L	<1.0	<1.0	<1.0	<1.0	<1.0	
Acenaphthene	83-32-9	1	µg/L	<1.0	<1.0	<1.0	<1.0	<1.0	
Fluorene	86-73-7	1	µg/L	<1.0	<1.0	<1.0	<1.0	<1.0	
Phenanthrene	85-01-8	1	µg/L	<1.0	<1.0	<1.0	<1.0	<1.0	
Anthracene	120-12-7	1	µg/L	<1.0	<1.0	<1.0	<1.0	<1.0	
Fluoranthene	206-44-0	1	µg/L	<1.0	<1.0	<1.0	<1.0	<1.0	
Pyrene	129-00-0	1	µg/L	<1.0	<1.0	<1.0	<1.0	<1.0	





## Analytical Results

Sub-Matrix: WATER (Matrix: WATER)				Client sample ID	GLMB03	MPMB01	MPMB02	MPMB03	MPMB04
Client sampling date / time				06-Apr-2017 12:15	06-Apr-2017 11:00	06-Apr-2017 10:30	06-Apr-2017 10:00	06-Apr-2017 09:15	
Compound	CAS Number	LOR	Unit	ES1708497-001	ES1708497-002	ES1708497-003	ES1708497-004	ES1708497-005	
				Result	Result	Result	Result	Result	
<b>EP075(SIM)B: Polynuclear Aromatic Hydrocarbons - Continued</b>									
Benz(a)anthracene	56-55-3	1	µg/L	<1.0	<1.0	<1.0	<1.0	<1.0	
Chrysene	218-01-9	1	µg/L	<1.0	<1.0	<1.0	<1.0	<1.0	
Benzo(b+j)fluoranthene	205-99-2 205-82-3	1	µg/L	<1.0	<1.0	<1.0	<1.0	<1.0	
Benzo(k)fluoranthene	207-08-9	1	µg/L	<1.0	<1.0	<1.0	<1.0	<1.0	
Benzo(a)pyrene	50-32-8	0.5	µg/L	<0.5	<0.5	<0.5	<0.5	<0.5	
Indeno(1.2.3.cd)pyrene	193-39-5	1	µg/L	<1.0	<1.0	<1.0	<1.0	<1.0	
Dibenz(a,h)anthracene	53-70-3	1	µg/L	<1.0	<1.0	<1.0	<1.0	<1.0	
Benzo(g,h,i)perylene	191-24-2	1	µg/L	<1.0	<1.0	<1.0	<1.0	<1.0	
^ Sum of polycyclic aromatic hydrocarbons	----	0.5	µg/L	<0.5	<0.5	<0.5	<0.5	<0.5	
^ Benzo(a)pyrene TEQ (zero)	----	0.5	µg/L	<0.5	<0.5	<0.5	<0.5	<0.5	
<b>EP080/071: Total Petroleum Hydrocarbons</b>									
C6 - C9 Fraction	----	20	µg/L	210	<20	<20	<20	50	
C10 - C14 Fraction	----	50	µg/L	<50	<50	<50	<50	<50	
C15 - C28 Fraction	----	100	µg/L	<100	<100	<100	<100	<100	
C29 - C36 Fraction	----	50	µg/L	<50	<50	<50	<50	<50	
^ C10 - C36 Fraction (sum)	----	50	µg/L	<50	<50	<50	<50	<50	
<b>EP080/071: Total Recoverable Hydrocarbons - NEPM 2013 Fractions</b>									
C6 - C10 Fraction	C6_C10	20	µg/L	220	<20	<20	<20	60	
^ C6 - C10 Fraction minus BTEX (F1)	C6_C10-BTEX	20	µg/L	90	<20	<20	<20	<20	
>C10 - C16 Fraction	----	100	µg/L	<100	<100	<100	<100	<100	
>C16 - C34 Fraction	----	100	µg/L	<100	<100	<100	<100	<100	
>C34 - C40 Fraction	----	100	µg/L	<100	<100	<100	<100	<100	
^ >C10 - C40 Fraction (sum)	----	100	µg/L	<100	<100	<100	<100	<100	
^ >C10 - C16 Fraction minus Naphthalene (F2)	----	100	µg/L	<100	<100	<100	<100	<100	
<b>EP080: BTEXN</b>									
Benzene	71-43-2	1	µg/L	<1	<1	<1	<1	<1	
Toluene	108-88-3	2	µg/L	126	<2	<2	<2	41	
Ethylbenzene	100-41-4	2	µg/L	<2	<2	<2	<2	<2	
meta- & para-Xylene	108-38-3 106-42-3	2	µg/L	2	<2	<2	<2	<2	
ortho-Xylene	95-47-6	2	µg/L	<2	<2	<2	<2	<2	
^ Total Xylenes	1330-20-7	2	µg/L	2	<2	<2	<2	<2	
^ Sum of BTEX	----	1	µg/L	128	<1	<1	<1	41	
Naphthalene	91-20-3	5	µg/L	<5	<5	<5	<5	<5	



## Analytical Results

Sub-Matrix: WATER (Matrix: WATER)				Client sample ID	GLMB03	MPMB01	MPMB02	MPMB03	MPMB04
Client sampling date / time				06-Apr-2017 12:15	06-Apr-2017 11:00	06-Apr-2017 10:30	06-Apr-2017 10:00	06-Apr-2017 09:15	
Compound	CAS Number	LOR	Unit	ES1708497-001	ES1708497-002	ES1708497-003	ES1708497-004	ES1708497-005	
				Result	Result	Result	Result	Result	
<b>EP080: BTEXN - Continued</b>									
<b>EP075(SIM)S: Phenolic Compound Surrogates</b>									
Phenol-d6	13127-88-3	1	%	20.4	16.9	17.1	18.9	21.1	
2-Chlorophenol-D4	93951-73-6	1	%	47.2	41.0	36.6	45.8	46.0	
2,4,6-Tribromophenol	118-79-6	1	%	75.8	55.0	41.5	63.7	39.8	
<b>EP075(SIM)T: PAH Surrogates</b>									
2-Fluorobiphenyl	321-60-8	1	%	78.7	60.3	54.2	75.7	76.7	
Anthracene-d10	1719-06-8	1	%	84.8	87.4	60.0	82.4	81.1	
4-Terphenyl-d14	1718-51-0	1	%	96.1	73.2	63.8	83.2	97.1	
<b>EP080S: TPH(V)/BTEX Surrogates</b>									
1,2-Dichloroethane-D4	17060-07-0	2	%	117	116	107	108	115	
Toluene-D8	2037-26-5	2	%	123	120	112	113	120	
4-Bromofluorobenzene	460-00-4	2	%	103	101	94.4	97.3	102	



## Analytical Results

Sub-Matrix: WATER (Matrix: WATER)				Client sample ID	QA1	TB	----	----	----
Client sampling date / time				[06-Apr-2017]	[06-Apr-2017]	----	----	----	
Compound	CAS Number	LOR	Unit	ES1708497-006	ES1708497-007	-----	-----	-----	
				Result	Result	----	----	----	
<b>EA005P: pH by PC Titrator</b>									
pH Value	----	0.01	pH Unit	6.78	----	----	----	----	----
<b>EA010P: Conductivity by PC Titrator</b>									
Electrical Conductivity @ 25°C	----	1	µS/cm	832	----	----	----	----	----
<b>EA015: Total Dissolved Solids dried at 180 ± 5 °C</b>									
Total Dissolved Solids @180°C	----	10	mg/L	448	----	----	----	----	----
<b>EA025: Total Suspended Solids dried at 104 ± 2°C</b>									
Suspended Solids (SS)	----	5	mg/L	8	----	----	----	----	----
<b>ED009: Anions</b>									
Bromide	24959-67-9	0.01	mg/L	0.290	----	----	----	----	----
<b>ED037P: Alkalinity by PC Titrator</b>									
Hydroxide Alkalinity as CaCO3	DMO-210-001	1	mg/L	<1	----	----	----	----	----
Carbonate Alkalinity as CaCO3	3812-32-6	1	mg/L	<1	----	----	----	----	----
Bicarbonate Alkalinity as CaCO3	71-52-3	1	mg/L	165	----	----	----	----	----
Total Alkalinity as CaCO3	----	1	mg/L	165	----	----	----	----	----
<b>ED041G: Sulfate (Turbidimetric) as SO4 2- by DA</b>									
Sulfate as SO4 - Turbidimetric	14808-79-8	1	mg/L	6	----	----	----	----	----
<b>ED045G: Chloride by Discrete Analyser</b>									
Chloride	16887-00-6	1	mg/L	166	----	----	----	----	----
<b>ED093F: Dissolved Major Cations</b>									
Calcium	7440-70-2	1	mg/L	30	----	----	----	----	----
Magnesium	7439-95-4	1	mg/L	30	----	----	----	----	----
Sodium	7440-23-5	1	mg/L	81	----	----	----	----	----
Potassium	7440-09-7	1	mg/L	3	----	----	----	----	----
<b>EG020F: Dissolved Metals by ICP-MS</b>									
Aluminium	7429-90-5	0.01	mg/L	<0.01	----	----	----	----	----
Antimony	7440-36-0	0.001	mg/L	<0.001	----	----	----	----	----
Arsenic	7440-38-2	0.001	mg/L	0.005	----	----	----	----	----
Boron	7440-42-8	0.05	mg/L	<0.05	----	----	----	----	----
Barium	7440-39-3	0.001	mg/L	0.498	----	----	----	----	----
Beryllium	7440-41-7	0.001	mg/L	<0.001	----	----	----	----	----
Cadmium	7440-43-9	0.0001	mg/L	<0.0001	----	----	----	----	----
Cobalt	7440-48-4	0.001	mg/L	<0.001	----	----	----	----	----
Chromium	7440-47-3	0.001	mg/L	<0.001	----	----	----	----	----
Copper	7440-50-8	0.001	mg/L	<0.001	----	----	----	----	----



## Analytical Results

Sub-Matrix: WATER (Matrix: WATER)				Client sample ID	QA1	TB	----	----	----
Client sampling date / time				[06-Apr-2017]	[06-Apr-2017]	----	----	----	
Compound	CAS Number	LOR	Unit	ES1708497-006	ES1708497-007	-----	-----	-----	
				Result	Result	----	----	----	
<b>EG020F: Dissolved Metals by ICP-MS - Continued</b>									
Manganese	7439-96-5	0.001	mg/L	0.162	----	----	----	----	
Nickel	7440-02-0	0.001	mg/L	0.001	----	----	----	----	
Lead	7439-92-1	0.001	mg/L	<0.001	----	----	----	----	
Selenium	7782-49-2	0.01	mg/L	<0.01	----	----	----	----	
Vanadium	7440-62-2	0.01	mg/L	<0.01	----	----	----	----	
Zinc	7440-66-6	0.005	mg/L	0.012	----	----	----	----	
Molybdenum	7439-98-7	0.001	mg/L	<0.001	----	----	----	----	
Strontium	7440-24-6	0.001	mg/L	0.356	----	----	----	----	
Uranium	7440-61-1	0.001	mg/L	<0.001	----	----	----	----	
Iron	7439-89-6	0.05	mg/L	4.49	----	----	----	----	
Bromine	7726-95-6	0.1	mg/L	0.4	----	----	----	----	
<b>EG035F: Dissolved Mercury by FIMS</b>									
Mercury	7439-97-6	0.0001	mg/L	<0.0001	----	----	----	----	
<b>EG052G: Silica by Discrete Analyser</b>									
Reactive Silica	----	0.05	mg/L	11.7	----	----	----	----	
<b>EK026SF: Total CN by Segmented Flow Analyser</b>									
Total Cyanide	57-12-5	0.004	mg/L	<0.004	----	----	----	----	
<b>EK040P: Fluoride by PC Titrator</b>									
Fluoride	16984-48-8	0.1	mg/L	<0.1	----	----	----	----	
<b>EK055G: Ammonia as N by Discrete Analyser</b>									
Ammonia as N	7664-41-7	0.01	mg/L	0.10	----	----	----	----	
<b>EK057G: Nitrite as N by Discrete Analyser</b>									
Nitrite as N	14797-65-0	0.01	mg/L	<0.01	----	----	----	----	
<b>EK058G: Nitrate as N by Discrete Analyser</b>									
Nitrate as N	14797-55-8	0.01	mg/L	<0.01	----	----	----	----	
<b>EK059G: Nitrite plus Nitrate as N (NOx) by Discrete Analyser</b>									
Nitrite + Nitrate as N	----	0.01	mg/L	<0.01	----	----	----	----	
<b>EK067G: Total Phosphorus as P by Discrete Analyser</b>									
Total Phosphorus as P	----	0.01	mg/L	<0.01	----	----	----	----	
<b>EK071G: Reactive Phosphorus as P by discrete analyser</b>									
Reactive Phosphorus as P	14265-44-2	0.01	mg/L	<0.01	----	----	----	----	
<b>EN055: Ionic Balance</b>									
Total Anions	----	0.01	meq/L	8.10	----	----	----	----	



## Analytical Results

Sub-Matrix: WATER (Matrix: WATER)				Client sample ID	QA1	TB	----	----	----
Client sampling date / time				[06-Apr-2017]	[06-Apr-2017]	----	----	----	
Compound	CAS Number	LOR	Unit	ES1708497-006	ES1708497-007	-----	-----	-----	
				Result	Result	----	----	----	
<b>EN055: Ionic Balance - Continued</b>									
Total Cations	----	0.01	meq/L	7.57	----	----	----	----	----
Ionic Balance	----	0.01	%	3.43	----	----	----	----	----
<b>EP005: Total Organic Carbon (TOC)</b>									
Total Organic Carbon	----	1	mg/L	<1	----	----	----	----	----
<b>EP033: C1 - C4 Hydrocarbon Gases</b>									
Methane	74-82-8	10	µg/L	279	----	----	----	----	----
Ethene	74-85-1	10	µg/L	<10	----	----	----	----	----
Ethane	74-84-0	10	µg/L	<10	----	----	----	----	----
Propene	115-07-1	10	µg/L	<10	----	----	----	----	----
Propane	74-98-6	10	µg/L	<10	----	----	----	----	----
Butene	25167-67-3	10	µg/L	<10	----	----	----	----	----
Butane	106-97-8	10	µg/L	<10	----	----	----	----	----
<b>EP075(SIM)A: Phenolic Compounds</b>									
Phenol	108-95-2	1	µg/L	<1.0	----	----	----	----	----
2-Chlorophenol	95-57-8	1	µg/L	<1.0	----	----	----	----	----
2-Methylphenol	95-48-7	1	µg/L	<1.0	----	----	----	----	----
3- & 4-Methylphenol	1319-77-3	2	µg/L	<2.0	----	----	----	----	----
2-Nitrophenol	88-75-5	1	µg/L	<1.0	----	----	----	----	----
2,4-Dimethylphenol	105-67-9	1	µg/L	<1.0	----	----	----	----	----
2,4-Dichlorophenol	120-83-2	1	µg/L	<1.0	----	----	----	----	----
2,6-Dichlorophenol	87-65-0	1	µg/L	<1.0	----	----	----	----	----
4-Chloro-3-methylphenol	59-50-7	1	µg/L	<1.0	----	----	----	----	----
2,4,6-Trichlorophenol	88-06-2	1	µg/L	<1.0	----	----	----	----	----
2,4,5-Trichlorophenol	95-95-4	1	µg/L	<1.0	----	----	----	----	----
Pentachlorophenol	87-86-5	2	µg/L	<2.0	----	----	----	----	----
<b>EP075(SIM)B: Polynuclear Aromatic Hydrocarbons</b>									
Naphthalene	91-20-3	1	µg/L	<1.0	----	----	----	----	----
Acenaphthylene	208-96-8	1	µg/L	<1.0	----	----	----	----	----
Acenaphthene	83-32-9	1	µg/L	<1.0	----	----	----	----	----
Fluorene	86-73-7	1	µg/L	<1.0	----	----	----	----	----
Phenanthrene	85-01-8	1	µg/L	<1.0	----	----	----	----	----
Anthracene	120-12-7	1	µg/L	<1.0	----	----	----	----	----
Fluoranthene	206-44-0	1	µg/L	<1.0	----	----	----	----	----
Pyrene	129-00-0	1	µg/L	<1.0	----	----	----	----	----



## Analytical Results

Sub-Matrix: WATER (Matrix: WATER)				Client sample ID	QA1	TB	----	----	----
Client sampling date / time				[06-Apr-2017]	[06-Apr-2017]	----	----	----	
Compound	CAS Number	LOR	Unit	ES1708497-006	ES1708497-007	-----	-----	-----	
				Result	Result	----	----	----	
<b>EP075(SIM)B: Polynuclear Aromatic Hydrocarbons - Continued</b>									
Benz(a)anthracene	56-55-3	1	µg/L	<1.0	----	----	----	----	
Chrysene	218-01-9	1	µg/L	<1.0	----	----	----	----	
Benzo(b+j)fluoranthene	205-99-2 205-82-3	1	µg/L	<1.0	----	----	----	----	
Benzo(k)fluoranthene	207-08-9	1	µg/L	<1.0	----	----	----	----	
Benzo(a)pyrene	50-32-8	0.5	µg/L	<0.5	----	----	----	----	
Indeno(1.2.3.cd)pyrene	193-39-5	1	µg/L	<1.0	----	----	----	----	
Dibenz(a.h)anthracene	53-70-3	1	µg/L	<1.0	----	----	----	----	
Benzo(g.h.i)perylene	191-24-2	1	µg/L	<1.0	----	----	----	----	
^ Sum of polycyclic aromatic hydrocarbons	----	0.5	µg/L	<0.5	----	----	----	----	
^ Benzo(a)pyrene TEQ (zero)	----	0.5	µg/L	<0.5	----	----	----	----	
<b>EP080/071: Total Petroleum Hydrocarbons</b>									
C6 - C9 Fraction	----	20	µg/L	<20	<20	----	----	----	
C10 - C14 Fraction	----	50	µg/L	<50	----	----	----	----	
C15 - C28 Fraction	----	100	µg/L	<100	----	----	----	----	
C29 - C36 Fraction	----	50	µg/L	<50	----	----	----	----	
^ C10 - C36 Fraction (sum)	----	50	µg/L	<50	----	----	----	----	
<b>EP080/071: Total Recoverable Hydrocarbons - NEPM 2013 Fractions</b>									
C6 - C10 Fraction	C6_C10	20	µg/L	<20	<20	----	----	----	
^ C6 - C10 Fraction minus BTEX (F1)	C6_C10-BTEX	20	µg/L	<20	<20	----	----	----	
>C10 - C16 Fraction	----	100	µg/L	<100	----	----	----	----	
>C16 - C34 Fraction	----	100	µg/L	<100	----	----	----	----	
>C34 - C40 Fraction	----	100	µg/L	<100	----	----	----	----	
^ >C10 - C40 Fraction (sum)	----	100	µg/L	<100	----	----	----	----	
^ >C10 - C16 Fraction minus Naphthalene (F2)	----	100	µg/L	<100	----	----	----	----	
<b>EP080: BTEXN</b>									
Benzene	71-43-2	1	µg/L	<1	<1	----	----	----	
Toluene	108-88-3	2	µg/L	<2	<2	----	----	----	
Ethylbenzene	100-41-4	2	µg/L	<2	<2	----	----	----	
meta- & para-Xylene	108-38-3 106-42-3	2	µg/L	<2	<2	----	----	----	
ortho-Xylene	95-47-6	2	µg/L	<2	<2	----	----	----	
^ Total Xylenes	1330-20-7	2	µg/L	<2	<2	----	----	----	
^ Sum of BTEX	----	1	µg/L	<1	<1	----	----	----	
Naphthalene	91-20-3	5	µg/L	<5	<5	----	----	----	



## Analytical Results

Sub-Matrix: WATER (Matrix: WATER)				Client sample ID	QA1	TB	----	----	----
Client sampling date / time				[06-Apr-2017]	[06-Apr-2017]	----	----	----	
Compound	CAS Number	LOR	Unit	ES1708497-006	ES1708497-007	-----	-----	-----	
				Result	Result	----	----	----	
<b>EP080: BTEXN - Continued</b>									
<b>EP075(SIM)S: Phenolic Compound Surrogates</b>									
Phenol-d6	13127-88-3	1	%	18.4	----	----	----	----	
2-Chlorophenol-D4	93951-73-6	1	%	42.9	----	----	----	----	
2,4,6-Tribromophenol	118-79-6	1	%	60.7	----	----	----	----	
<b>EP075(SIM)T: PAH Surrogates</b>									
2-Fluorobiphenyl	321-60-8	1	%	58.1	----	----	----	----	
Anthracene-d10	1719-06-8	1	%	98.3	----	----	----	----	
4-Terphenyl-d14	1718-51-0	1	%	75.8	----	----	----	----	
<b>EP080S: TPH(V)/BTEX Surrogates</b>									
1,2-Dichloroethane-D4	17060-07-0	2	%	110	102	----	----	----	
Toluene-D8	2037-26-5	2	%	114	104	----	----	----	
4-Bromofluorobenzene	460-00-4	2	%	96.9	88.6	----	----	----	



## Surrogate Control Limits

Sub-Matrix: WATER		Recovery Limits (%)	
Compound	CAS Number	Low	High
<b>EP075(SIM)S: Phenolic Compound Surrogates</b>			
Phenol-d6	13127-88-3	10	44
2-Chlorophenol-D4	93951-73-6	14	94
2,4,6-Tribromophenol	118-79-6	17	125
<b>EP075(SIM)T: PAH Surrogates</b>			
2-Fluorobiphenyl	321-60-8	20	104
Anthracene-d10	1719-06-8	27	113
4-Terphenyl-d14	1718-51-0	32	112
<b>EP080S: TPH(V)/BTEX Surrogates</b>			
1,2-Dichloroethane-D4	17060-07-0	71	137
Toluene-D8	2037-26-5	79	131
4-Bromofluorobenzene	460-00-4	70	128





**SYDNEY**

Ground floor, Suite 01, 20 Chandos Street  
St Leonards, New South Wales, 2065  
T 02 9493 9500 F 02 9493 9599

**NEWCASTLE**

Office Level, Suite 01, 100 Street  
Newcastle, New South Wales, 2300  
T 02 49 7 7777 F 02 49 7 7777

**BRISBANE**

Level 4, Suite 01, 87 Wickham Terrace  
Spring Hill, Queensland, 4000  
T 07 3839 1800 F 07 3839 1866

