

Parsons Brinckerhoff Australia Pty Limited

ABN 80 078 004 798

Level 27 Ernst & Young Centre
680 George Street
Sydney NSW 2000
GPO Box 5394
Sydney NSW 2001
Australia
Tel: +61 2 9272 5100
Fax: +61 2 9272 5101

www.pbworld.com

Certified to ISO 9001, ISO 14001, OHSAS 18001

Memo

Date 27 November 2015
To Nicola Fry
From Carolina Sardella
Ref 2200644A-WAT-MEM-001 RevC
Subject Camden Gas Project - FY16 Six-monthly monitoring update - October 2015

This memo presents the updated hydrographs for the Denham Court, Menangle Park and Glenlee groundwater monitoring bores to October 2015 and the water quality results for the October 2015 sampling event. It also includes October 2015 water quality results for the Nepean River sample.

Key observations for this monitoring period (July to October 2015) are as follows:

- The water level at RMB01 continues to slowly increase, as per the historical trend. Sufficient water was present across the screened section of the monitoring bore (69.0 – 81.0 m below ground level (mbgl)) to allow for a sample to be collected. The standing water level on 22 October 2015 was 78.13 mbgl.
- The water level at all monitoring bores at the Menangle Park site show a response to the high rainfall event in August 2015; the response decreases with depth.
- The VWP sensors at GLMB01 and GLMB02, which were installed in March 2015, have not stabilised during this monitoring period. As such, the data has not been presented in this report as it is considered unreliable.
- The October 2015 water quality results were generally comparable or below the historical monitoring range.

Figures A.1 – A.6: Individual hydrographs for the Denham Court, Menangle Park and Glenlee sites

Figures A.7 – A.8: Nested hydrographs for the Denham Court, Menangle Park and Glenlee sites

Table A.1: Water quality results for October 2015

Yours sincerely



Carolina Sardella
Hydrogeologist

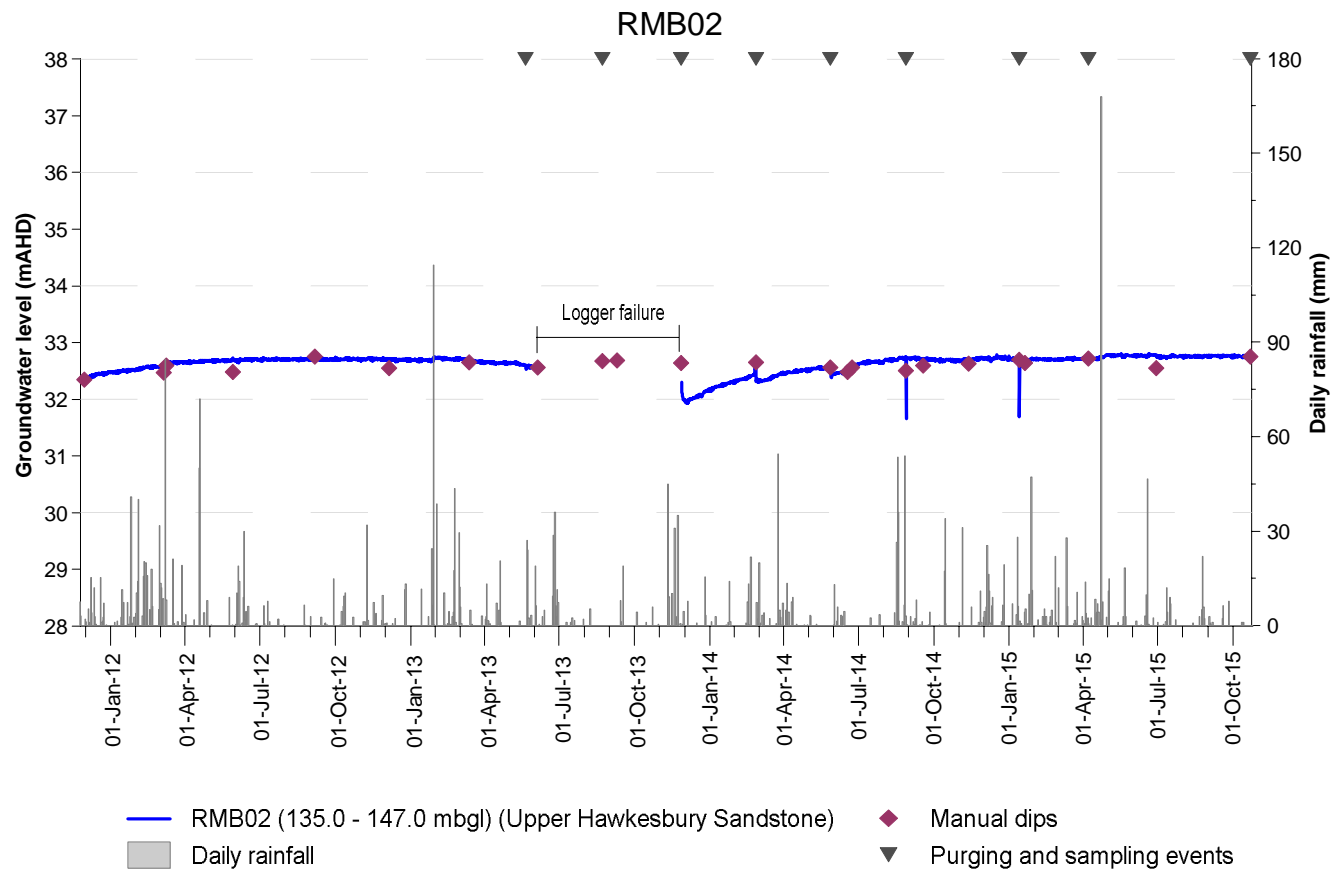
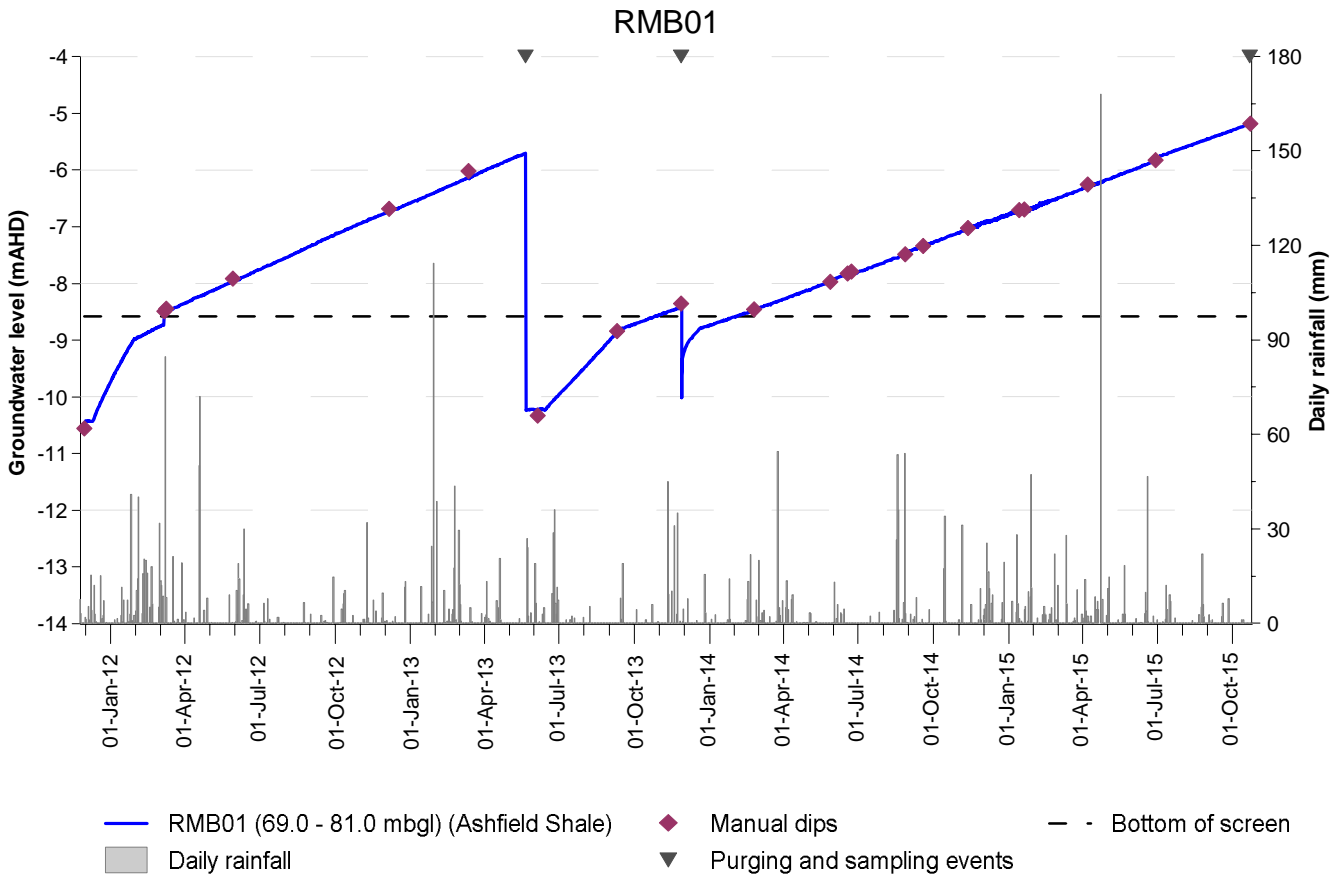


Figure A.1: RMB01 and RMB02 monitoring bores

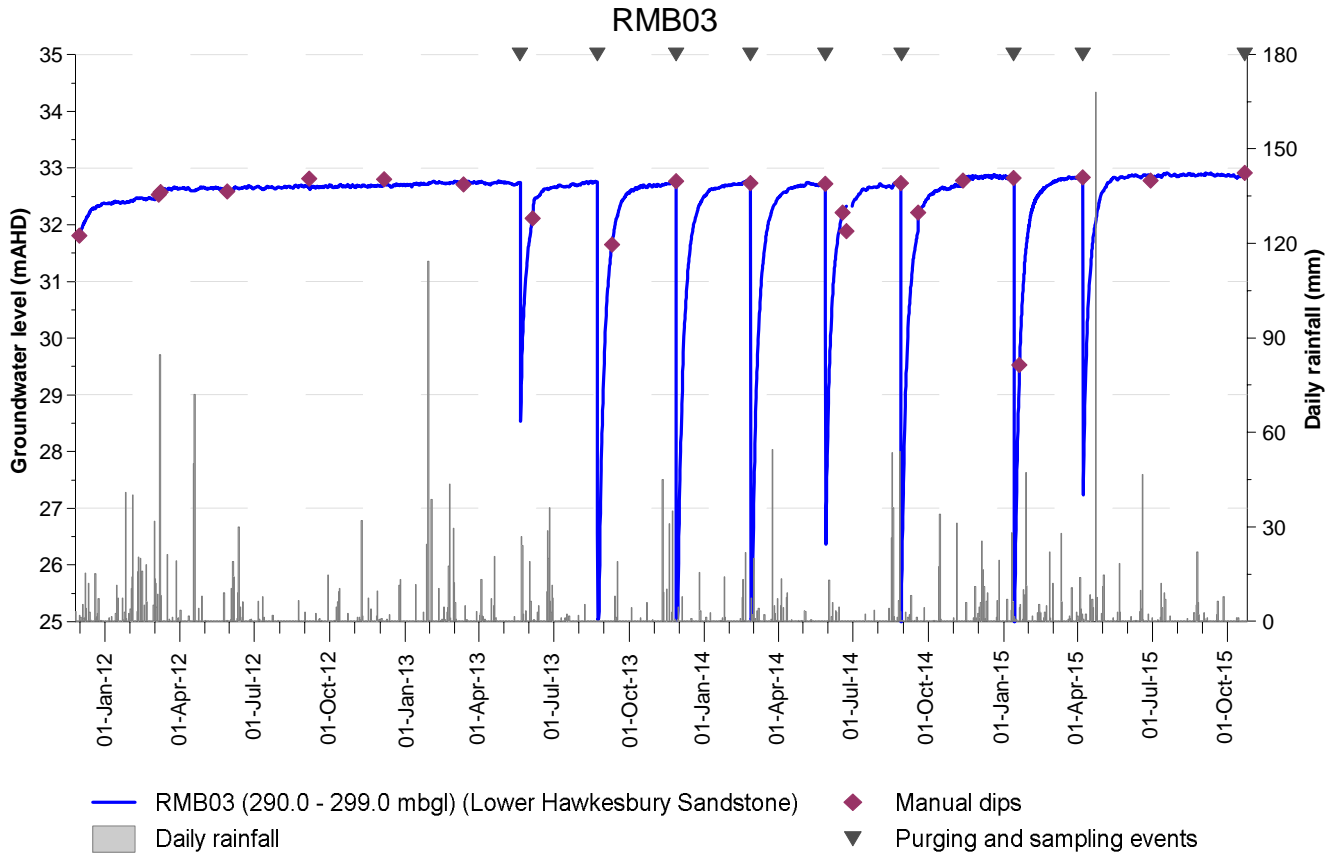


Figure A.2: RMB03 monitoring bore

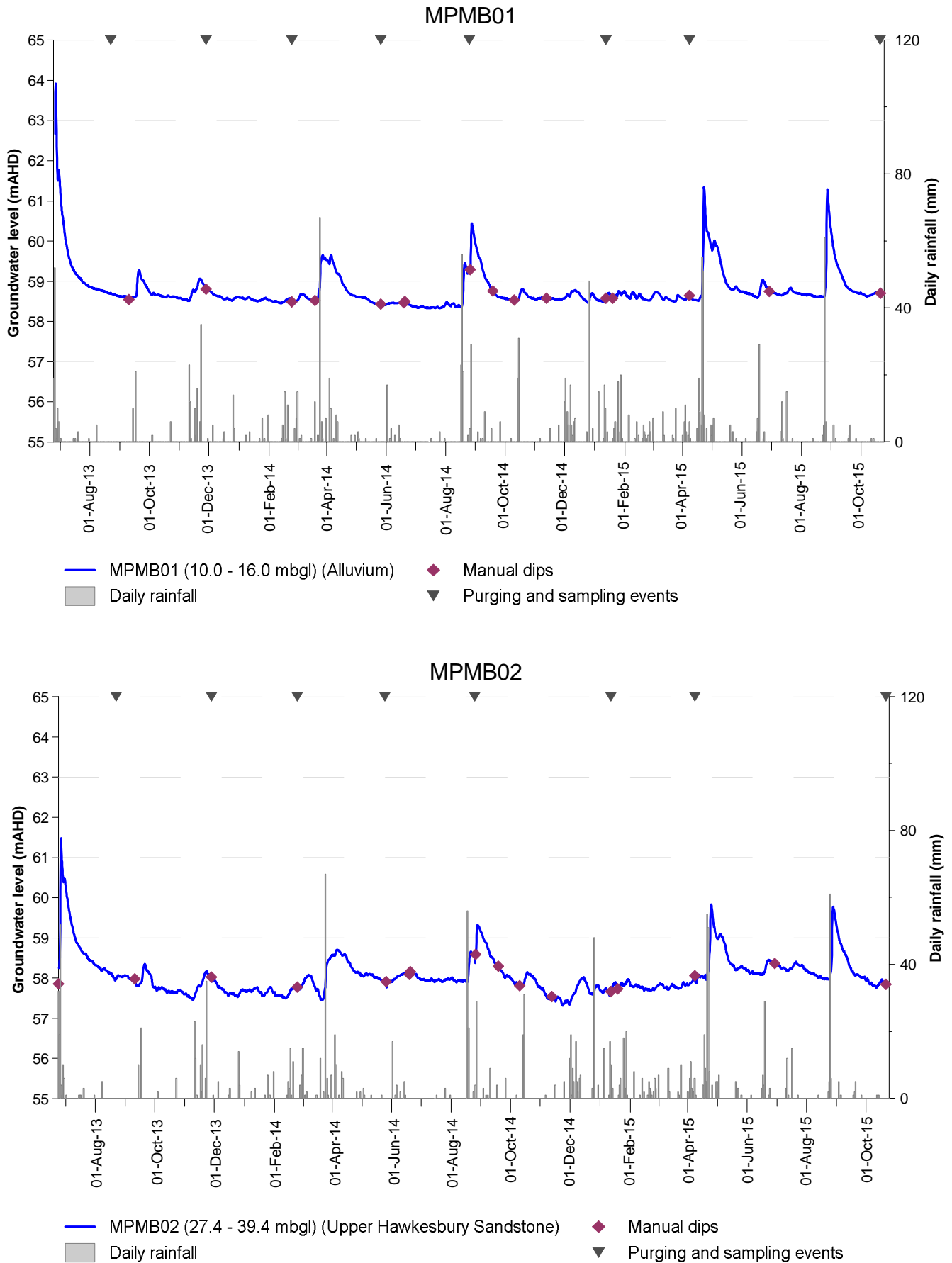


Figure A.3: MPMB01 and MPMB02 monitoring bores

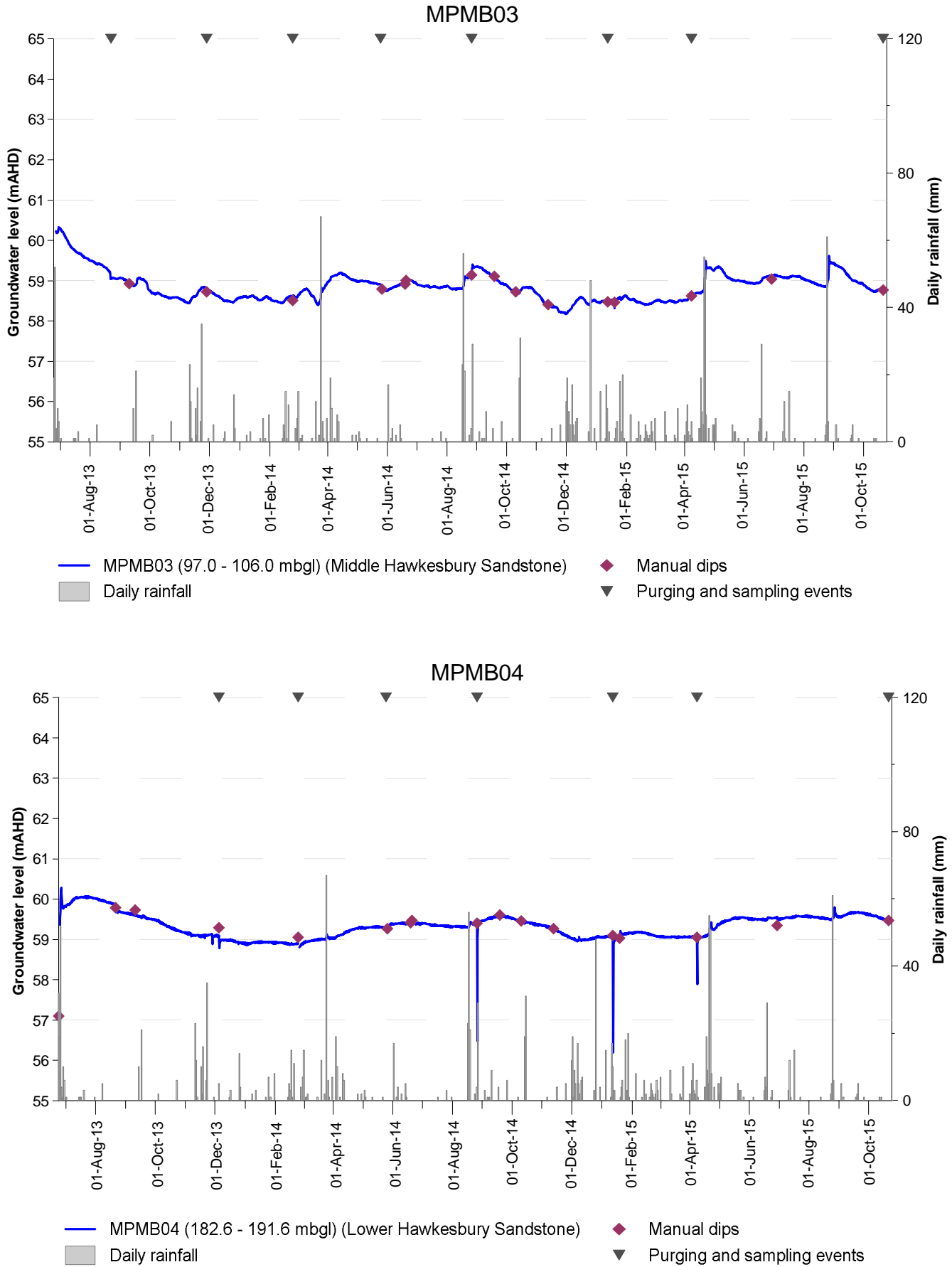


Figure A.4: MPMB03 and MPMB04 monitoring bores

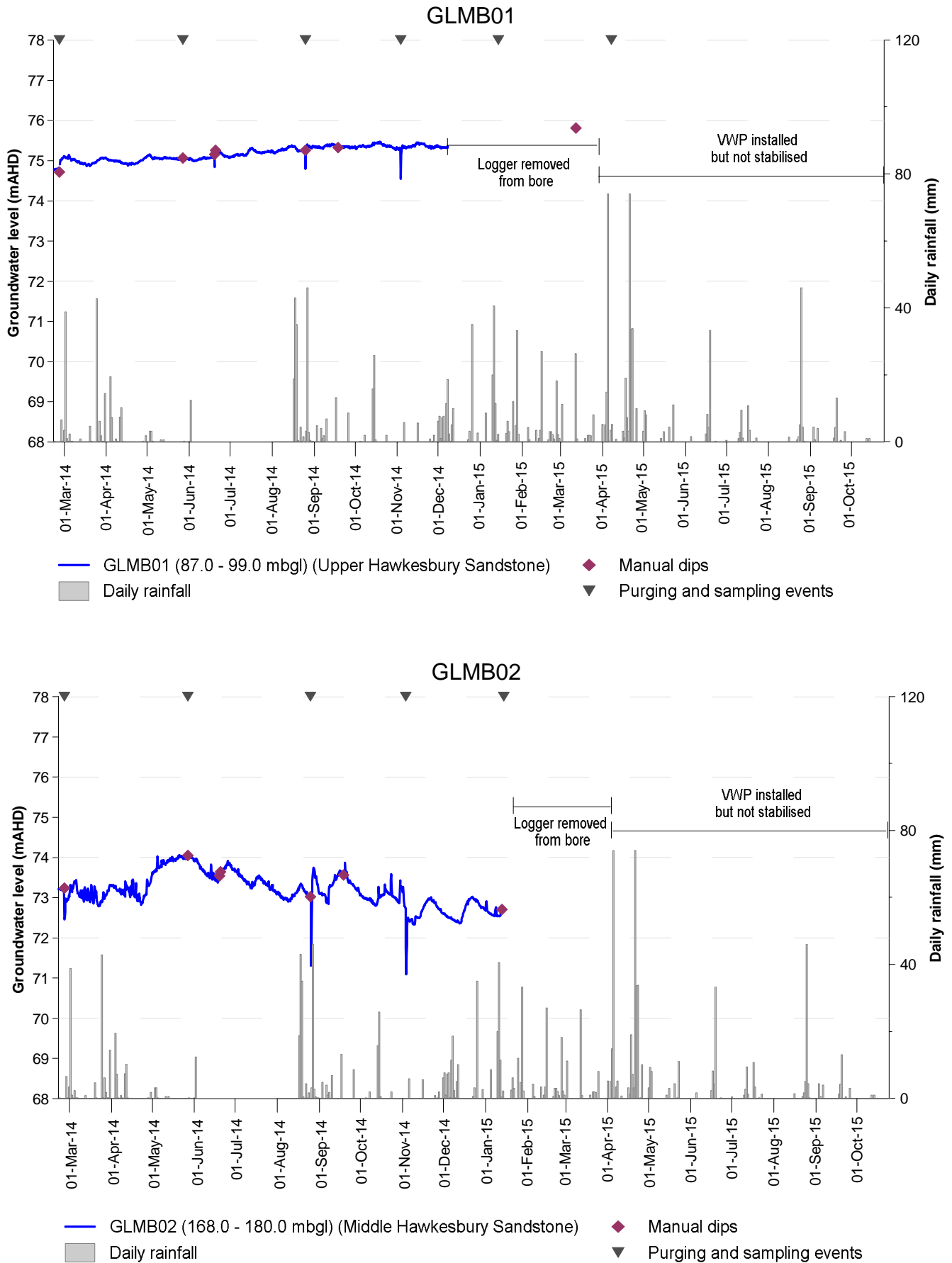


Figure A.5: GLMB01 and GLM02 monitoring bores

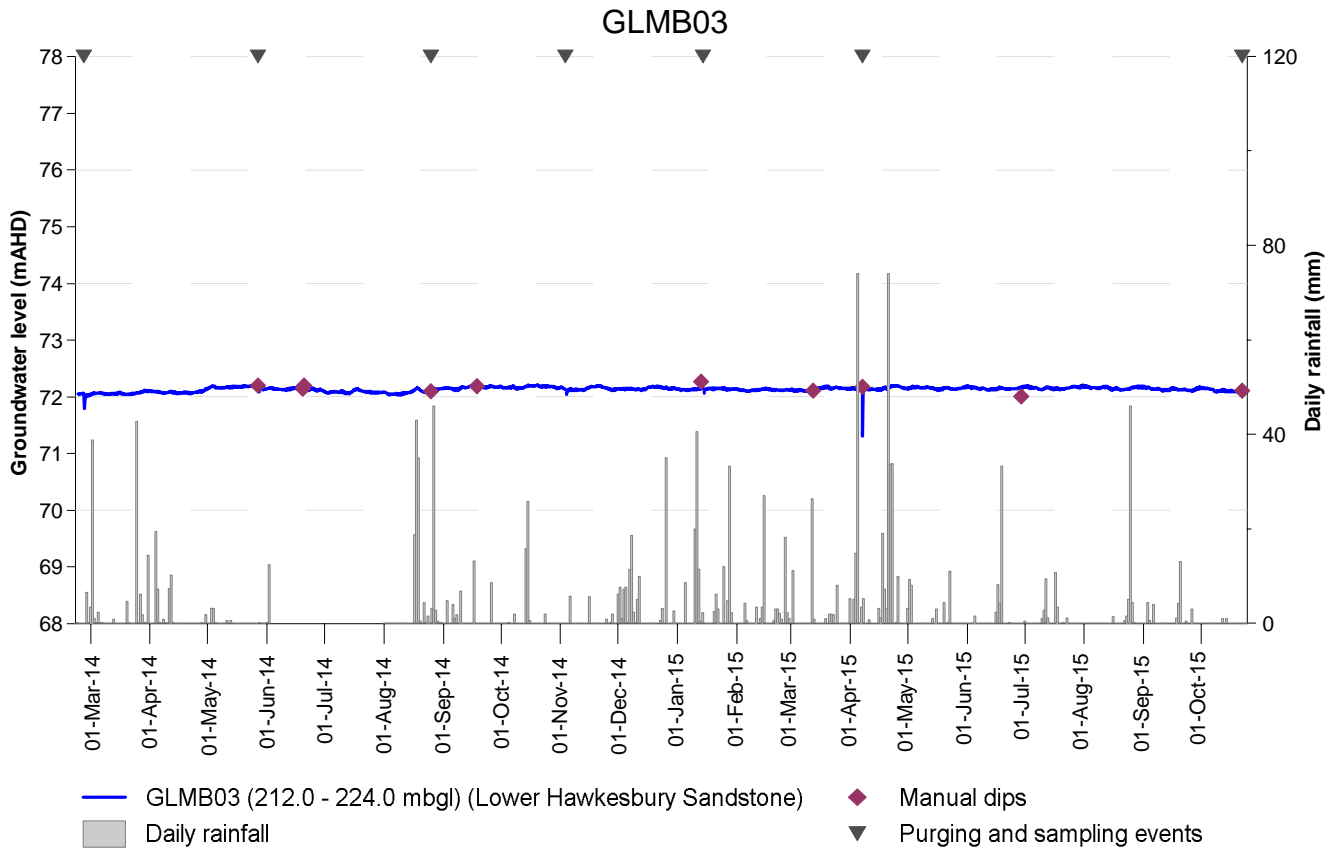


Figure A.6: GLM03 monitoring bore

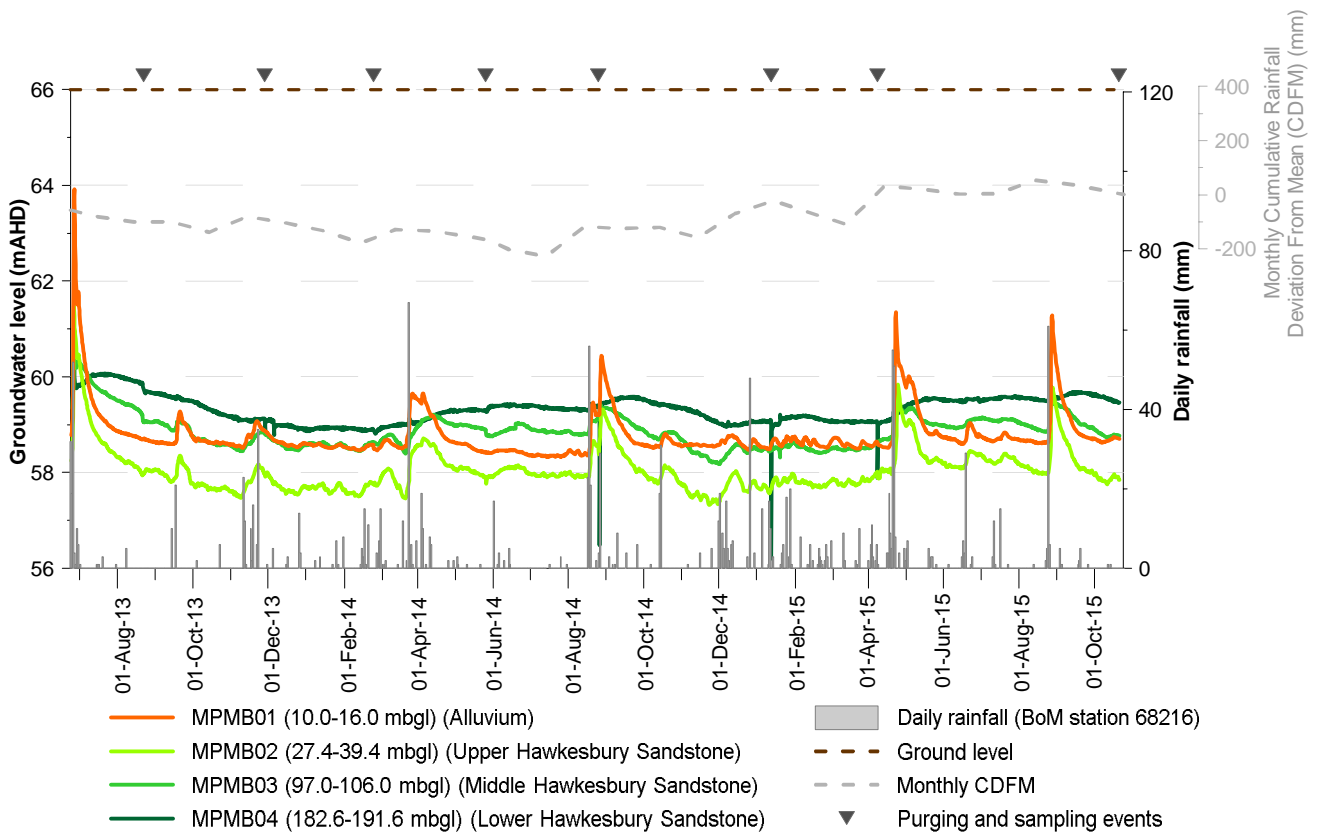
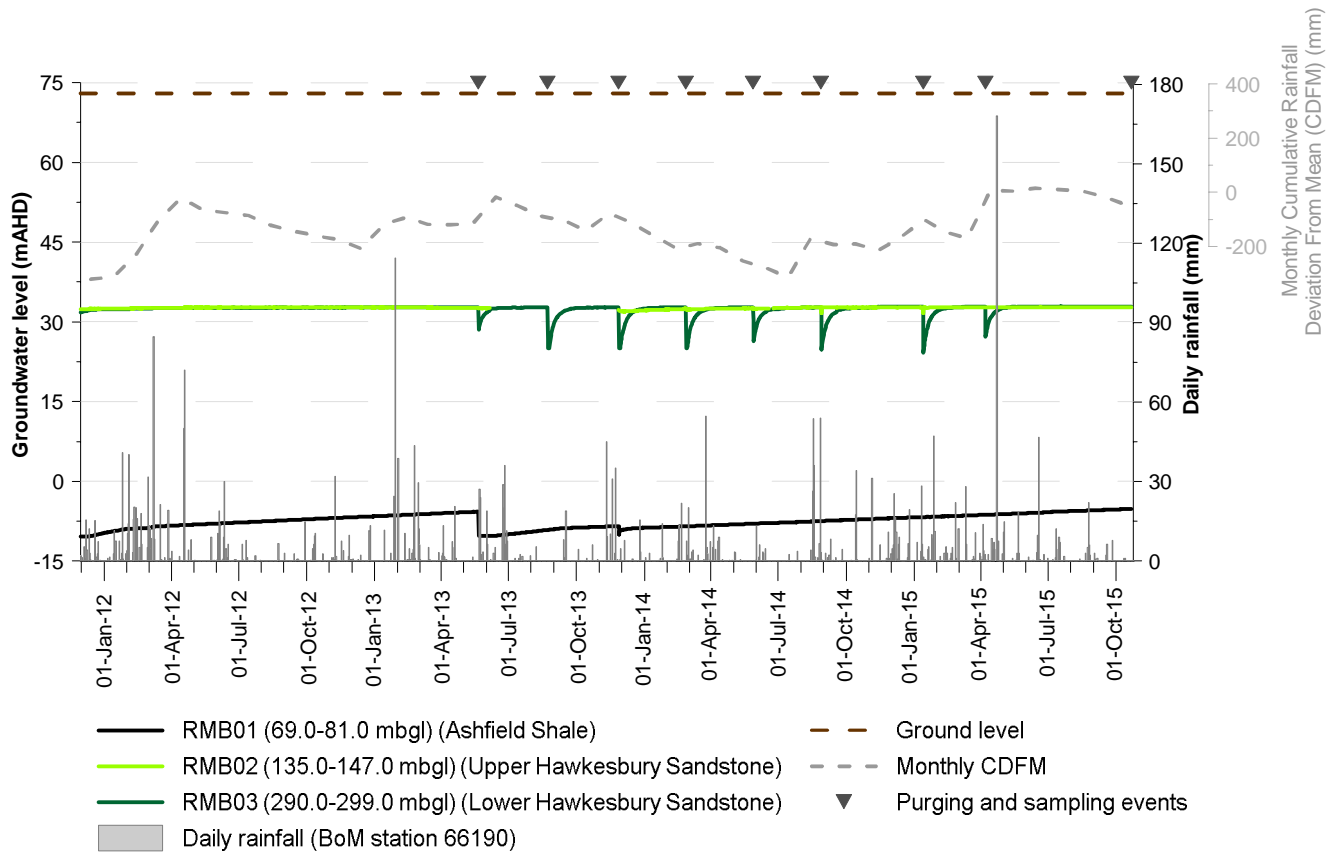


Figure A.7: RMB and MPMB monitoring bores

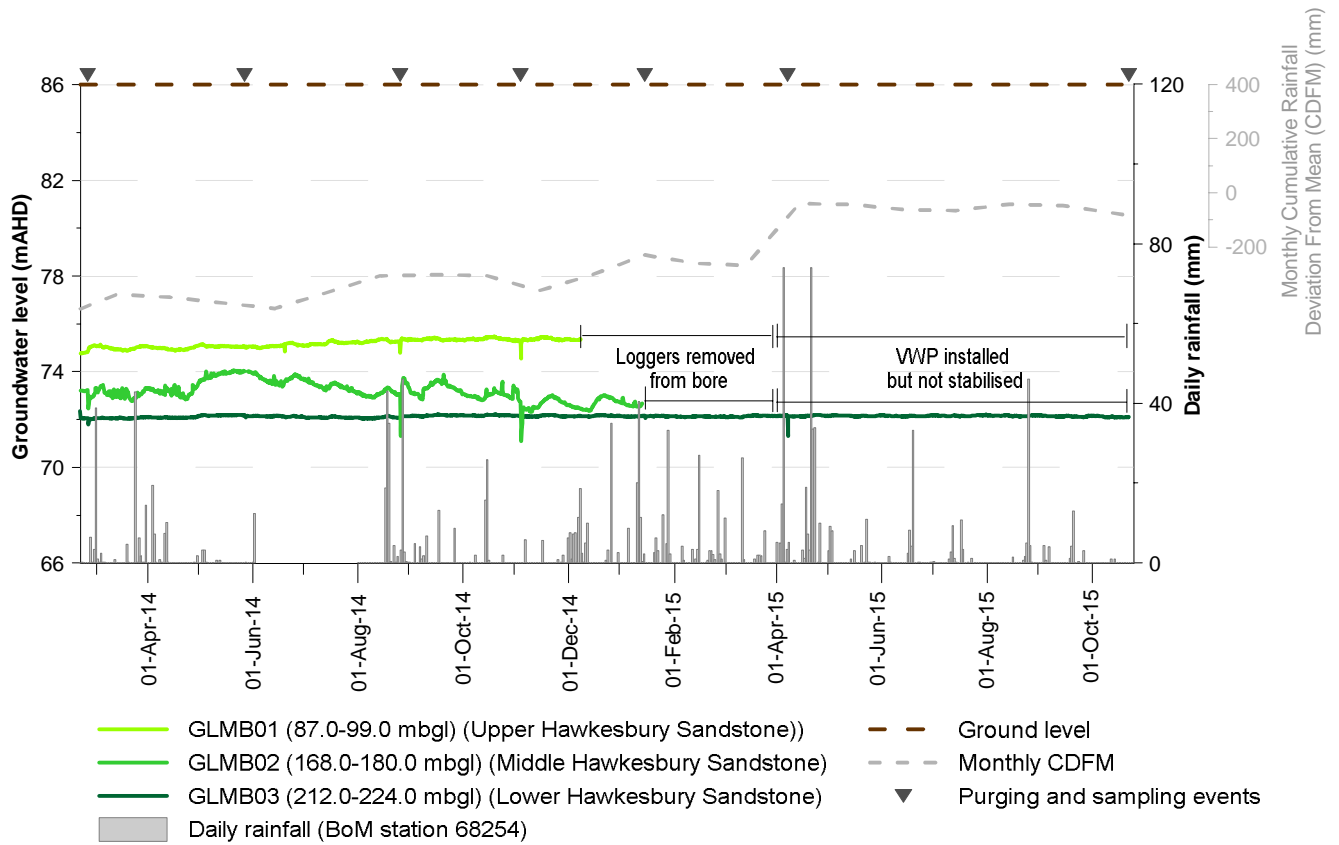


Figure A.8: GLMB monitoring bores

