

# AGL LOY YANG PTY LTD

## Monthly Monitoring Report

**Licence Number:** OL000011149  
**Licensee:** AGL Loy Yang Pty Ltd  
**Premises Address:** Bartons Lane  
Traralgon VIC 3844  
**Reporting Period:** 1 January 2025 to 31 January 2025



## Introduction

AGL Loy Yang is situated in the Latrobe Valley, approximately 165 kilometres east of Melbourne. AGL Loy Yang holds an Environment Protection Authority (EPA) Operating Licence (OL000011149) for the operation of the Loy Yang A Power Station and the adjacent Loy Yang brown coal mine.

AGL Loy Yang's emissions to air from the Power Station result from the combustion of coal to produce electricity. The products of coal combustion include sulphur dioxide (SO<sub>2</sub>), oxides of nitrogen (NO<sub>x</sub>), carbon monoxide (CO), and particles.

AGL Loy Yang has four generating units. Discharge points 1-4 are the corresponding power station unit stacks. Each unit (discharge points 1-4) is fitted with a Continuous Emissions Monitoring System (CEMS) for sulphur dioxide, oxides of nitrogen, carbon monoxide, and particles.

This monitoring report relates to the air emissions monitoring activities specified in conditions OL\_DA04 and OL\_DA04.02 of EPA Operating Licence OL000011149.

There may be differences when comparing the information reported on a daily basis and the information reported in the monthly report. Apparent non-compliances may be the result of instrument calibration, an instrument failure, or an error in the data transfer process. The data validation process at the end of each month, which involves checking the accuracy and quality of the data, will identify these and they will be explained in the monthly report.

If you have any questions regarding the information presented, please contact AGL Loy Yang via [lymonitoring@agl.com.au](mailto:lymonitoring@agl.com.au)



# January 2025 Data Summary

Discharge Point	1 - 4															
Monitoring	Continuous															
Indicator	Carbon Monoxide				Oxides of Nitrogen				Particles				Sulphur Dioxide			
Limit Type	Maximum 90th percentile		Maximum Daily		Maximum 90th percentile		Maximum Daily		Maximum 90th percentile		Maximum Daily		Maximum 90th percentile		Maximum Daily	
Max Limit	40,000 g/min		121,600 g/min		73,600 g/min		96,500 g/min		16,200 g/min		39,500 g/min		200,000 g/min		400,000 g/min	
Date	Max Value	Status	Max Value	Status	Max Value	Status	Max Value	Status	Max Value	Status	Max Value	Status	Max Value	Status	Max Value	Status
01/01/2025	17,588	●	9,260	●	47,244	●	37,864	●	11,908	●	9,185	●	110,586	●	67,119	●
02/01/2025	17,577	●	29,856	●	47,244	●	37,460	●	11,905	●	5,435	●	110,586	●	59,657	●
03/01/2025	17,588	●	47,552	●	47,244	●	37,849	●	11,905	●	8,156	●	110,586	●	59,346	●
04/01/2025	17,595	●	19,847	●	47,244	●	35,879	●	11,905	●	9,125	●	110,462	●	62,546	●
05/01/2025	17,604	●	19,499	●	47,244	●	38,982	●	11,905	●	6,642	●	110,462	●	64,201	●
06/01/2025	17,604	●	9,696	●	47,244	●	34,582	●	11,905	●	10,356	●	110,462	●	62,550	●
07/01/2025	17,604	●	16,206	●	47,244	●	34,943	●	11,898	●	10,657	●	110,462	●	63,019	●
08/01/2025	17,554	●	10,271	●	47,244	●	30,621	●	11,898	●	12,358	●	110,462	●	67,651	●
09/01/2025	17,542	●	13,464	●	47,244	●	28,934	●	11,898	●	27,166	●	110,462	●	66,083	●
10/01/2025	17,542	●	14,536	●	47,244	●	25,570	●	11,893	●	6,907	●	110,462	●	44,030	●
11/01/2025	17,533	●	9,715	●	47,244	●	28,726	●	11,888	●	5,777	●	110,462	●	49,009	●
12/01/2025	17,469	●	1,604	●	47,244	●	28,037	●	11,881	●	7,148	●	110,462	●	48,404	●
13/01/2025	17,469	●	9,908	●	47,244	●	30,638	●	11,865	●	5,670	●	110,462	●	46,083	●
14/01/2025	17,451	●	15,834	●	47,244	●	31,136	●	11,862	●	4,307	●	110,462	●	49,502	●
15/01/2025	17,377	●	16,257	●	47,244	●	32,241	●	11,842	●	12,200	●	110,462	●	54,370	●
16/01/2025	17,302	●	9,230	●	47,244	●	28,296	●	11,823	●	10,455	●	110,462	●	66,496	●
17/01/2025	17,186	●	13,335	●	47,244	●	33,079	●	11,823	●	11,482	●	110,462	●	75,411	●
18/01/2025	17,173	●	10,394	●	47,244	●	29,361	●	11,820	●	11,114	●	110,486	●	120,150	●
19/01/2025	17,173	●	19,519	●	47,244	●	27,903	●	11,801	●	16,039	●	111,042	●	147,908	●
20/01/2025	17,173	●	19,682	●	47,241	●	32,466	●	11,800	●	15,782	●	111,826	●	160,758	●
21/01/2025	17,180	●	25,422	●	47,240	●	35,962	●	11,800	●	8,819	●	112,418	●	188,953	●
22/01/2025	17,182	●	17,182	●	47,240	●	31,719	●	11,798	●	12,478	●	112,667	●	185,790	●
23/01/2025	17,190	●	29,513	●	47,240	●	35,372	●	11,810	●	16,594	●	112,878	●	124,083	●
24/01/2025	17,262	●	65,238	●	47,216	●	44,649	●	11,811	●	13,186	●	112,934	●	140,048	●
25/01/2025	17,283	●	39,933	●	47,178	●	39,761	●	11,807	●	10,243	●	112,537	●	130,968	●
26/01/2025	17,281	●	40,340	●	47,178	●	43,825	●	11,807	●	7,893	●	112,537	●	106,219	●
27/01/2025	17,274	●	20,585	●	47,178	●	45,336	●	11,813	●	16,575	●	113,047	●	154,705	●
28/01/2025	17,281	●	29,563	●	47,169	●	46,576	●	11,811	●	8,349	●	113,120	●	170,763	●
29/01/2025	17,283	●	62,917	●	47,169	●	42,821	●	11,811	●	7,264	●	113,134	●	132,001	●
30/01/2025	17,325	●	56,144	●	47,169	●	42,919	●	11,811	●	7,077	●	113,533	●	149,316	●
31/01/2025	17,290	●	44,911	●	47,169	●	43,520	●	11,807	●	7,926	●	113,848	●	149,606	●

## Monitoring System Availability

No monitoring system failures were recorded in January 2025.

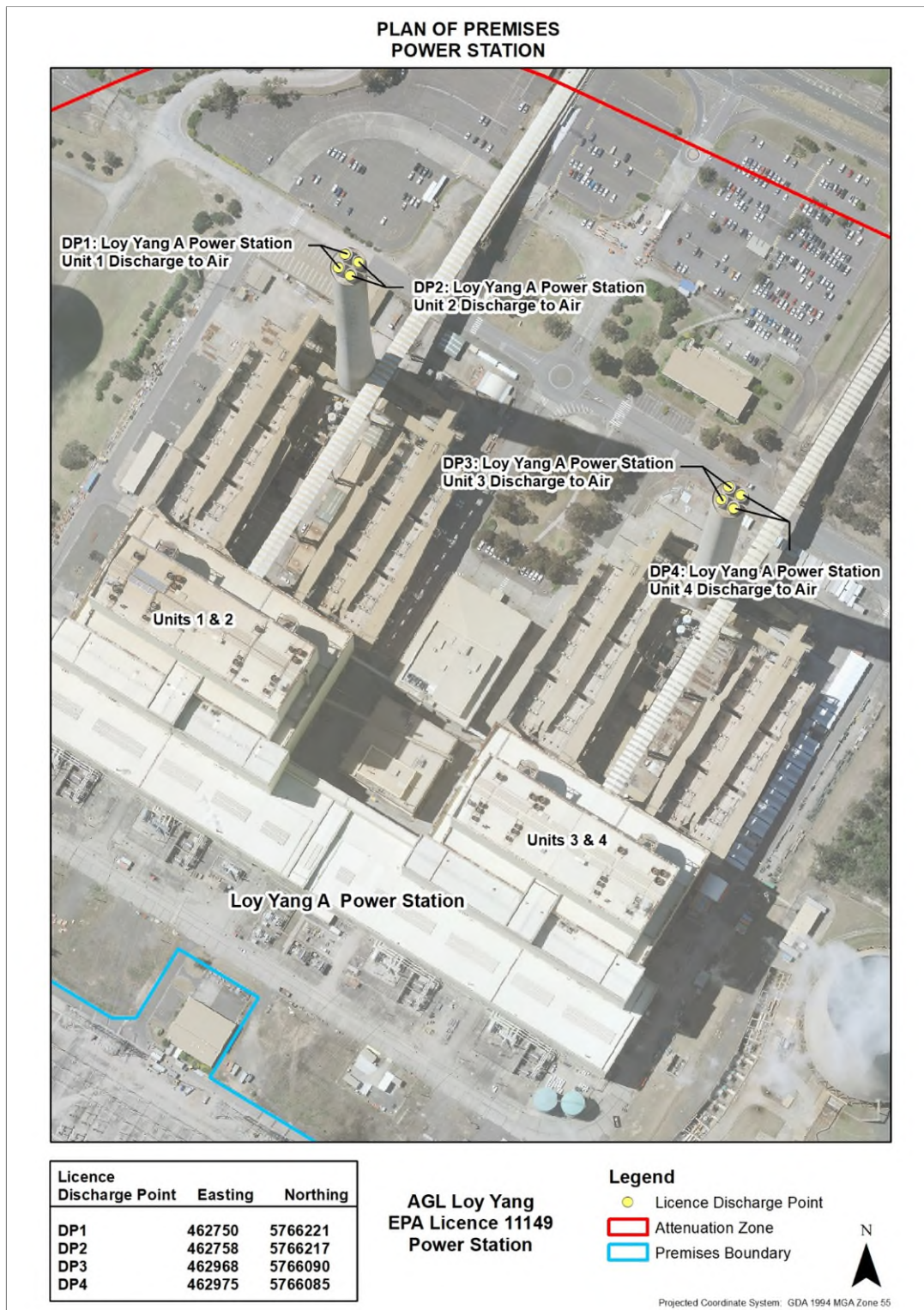
## Details of any exceedances of discharge limits

No exceedances of licence condition OL\_DA01.10.02 discharge limits were recorded in January 2025.

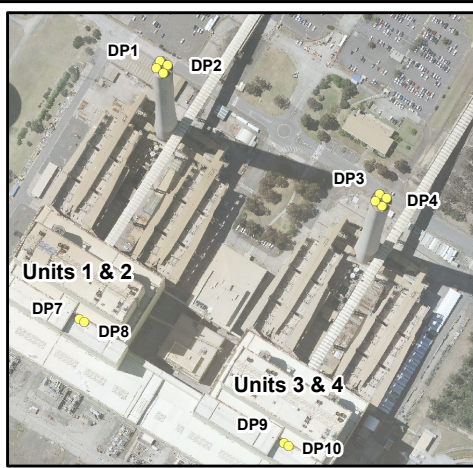
## Details of any corrections made to previous reports

No corrections have been made to any previous reports.

# AGL Loy Yang Site Plan

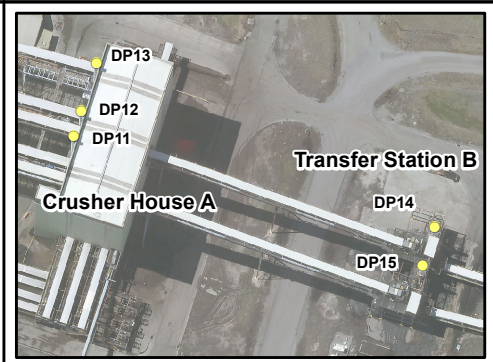


# PLAN OF PREMISES

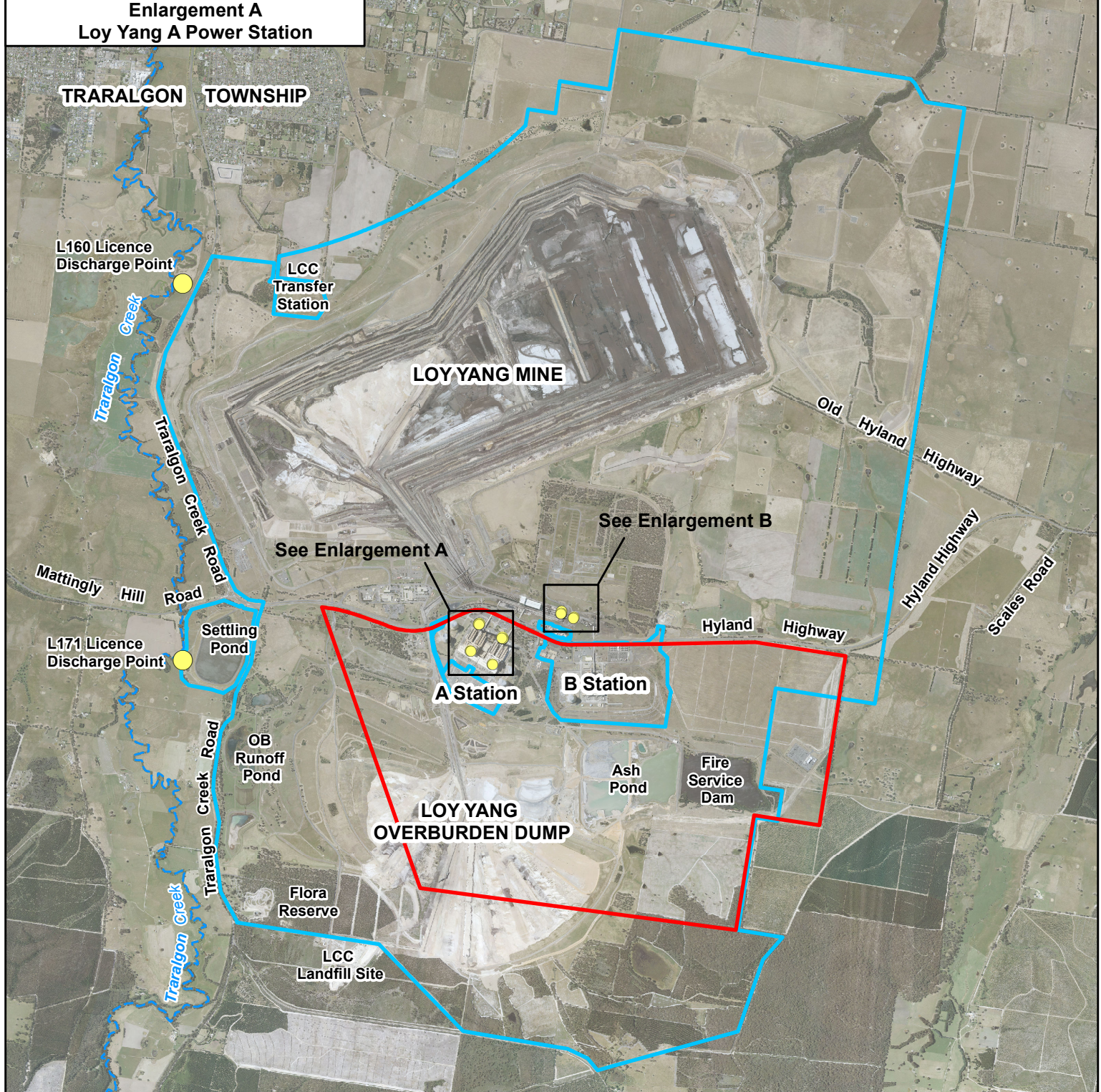


**Enlargement A  
Loy Yang A Power Station**

Licence Discharge Point	Easting	Northing
L160	460010	5769368
L171	460022	5765887
DP1	462750	5766221
DP2	462758	5766217
DP3	462968	5766090
DP4	462975	5766085
DP7	462670	5765965
DP8	462675	5765963
DP9	462872	5765842
DP10	462878	5765840
DP11	463507	5766308
DP12	463510	5766316
DP13	463515	5766332
DP14	463627	5766278
DP15	463623	5766265



**Enlargement B  
Cusher House A & Transfer Station B**



**Legend**

- Licence Discharge Point
- Attenuation Zone
- Premises Boundary

**AGL Loy Yang  
EPA Licence 11149**

