



Newcastle Community Dialogue Group

Thursday, 23 February 2023



Before we begin, I would like to acknowledge the Traditional Owners of the lands on which we meet today and pay my respects to their Elders past and present.

Agenda



1 Open and welcome, apologies, declarations, previous minutes, business arising and correspondence

2 Land and Approvals Update

3 Newcastle Gas Storage Facility latest news

4 AGL Update

5 General business, next meeting and close

Tomago Battery Energy Storage System Project

Briefing
CDG/AGL
February 23, 2023



Agenda



1

Introductions

4

Schedule

2

Project Overview

5

Discussion

3

Environmental Assessment
Approach

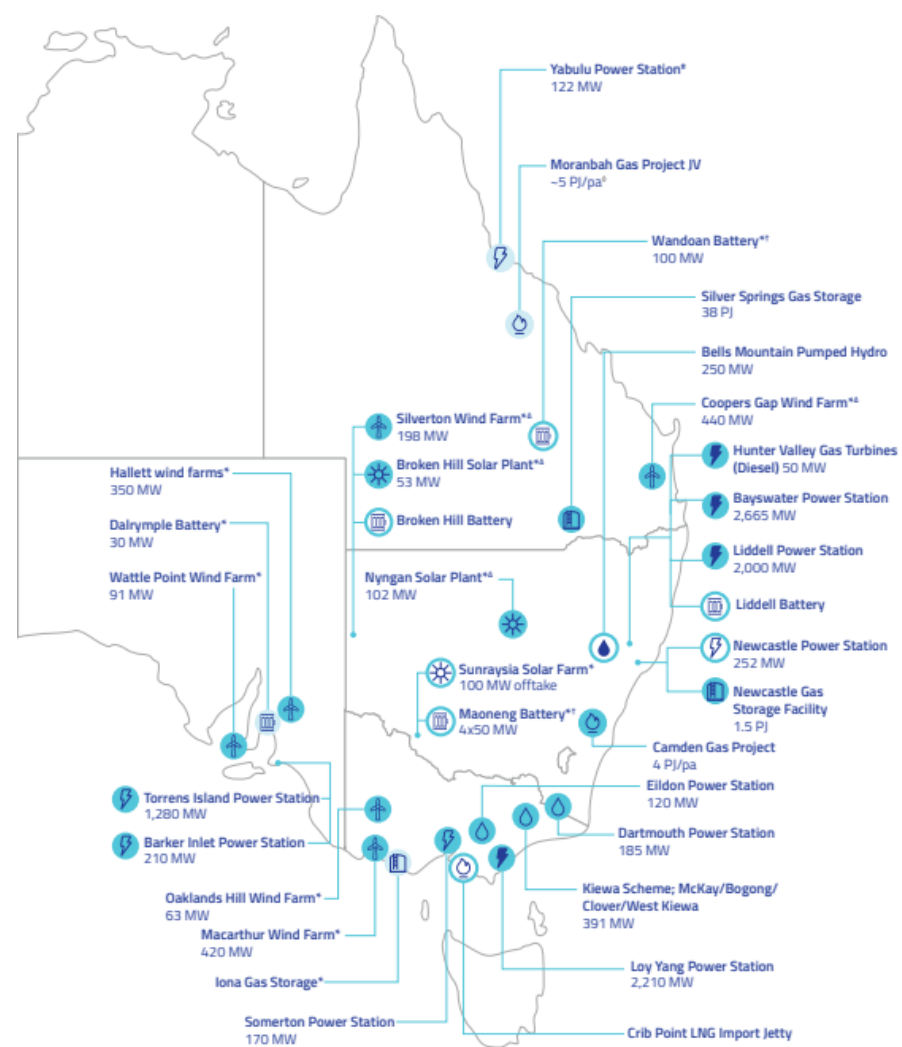
AGL - Renewables

AGL is Australia's largest generator, and largest ASX listed renewables operator and developer:

- 1,578 MW of wind
- 155 MW of large-scale solar
- 800 MW of hydropower
- Building 300 MW of batteries now
- 3.2 GW of projects in pipeline now

Latest **Review of Strategic Directions (ROSD)** sets targets of:

- 5GW by 2030
- 12GW by 2035
- At a cost of \$20 billion
- Net zero on Scope 3 emissions by 2050



Project Overview

To construct, operate and maintain a battery energy storage system (BESS) at Tomago, NSW:

- Construction and operation of a BESS of approximately 500 megawatts (MW) and up to 2,000 megawatt-hours (MWh) in capacity
- Transmission line from the BESS land to either the 132kV Transgrid substation (north) or the 330kV Transgrid substation (south)
- Connection to an existing switchyard, including minor works to connect the BESS to the preferred neighbouring substation



Project Location

Land

The site is at Tomago in a semi-rural/industrial area with industrial land uses located adjacent to and around the Site.

Several industrial sites are immediately to the east, while rural properties are located to the south and east.

BESS Site:

1940 Pacific Highway, Tomago (Lots 2 and 3 of DP 1043561)

Transmission Line:

Part Lot 4 DP 1043561, Old Punt Road, and Part Lot 202 DP 1173564

Transmission Connection:

Lot 101 in DP 1125747 (132kV), Lot 103 in DP 1125747, Part Lot 104 in DP 1125747, Part Lot 3 in DP 808004



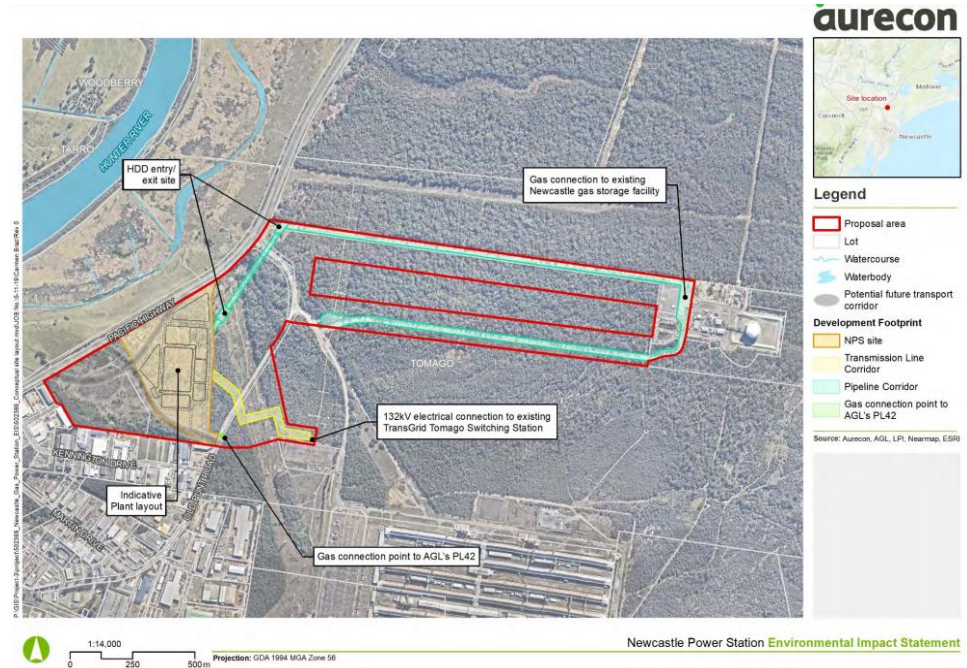
The Battery Site

- **Area** – total land is approximately 22 ha. BESS site is approximately 12 ha
- **LGA** – Port Stephens Council
- **Zoning** – IN1 (General Industrial)
- **Permissibility** - permissible with consent within the IN1 General Industrial land use zone under the **T&I SEPP**
- **Design** – will allow for known constraints



Newcastle Power Station Site

- **Project approved in March 2021**
- Larger footprint
- Site and constraints are well known
- The Newcastle Power Station EIS
 - investigated the site in detail
 - widely consulted the community
 - received State planning approval with no objections



NSW Environmental Assessment for BESS

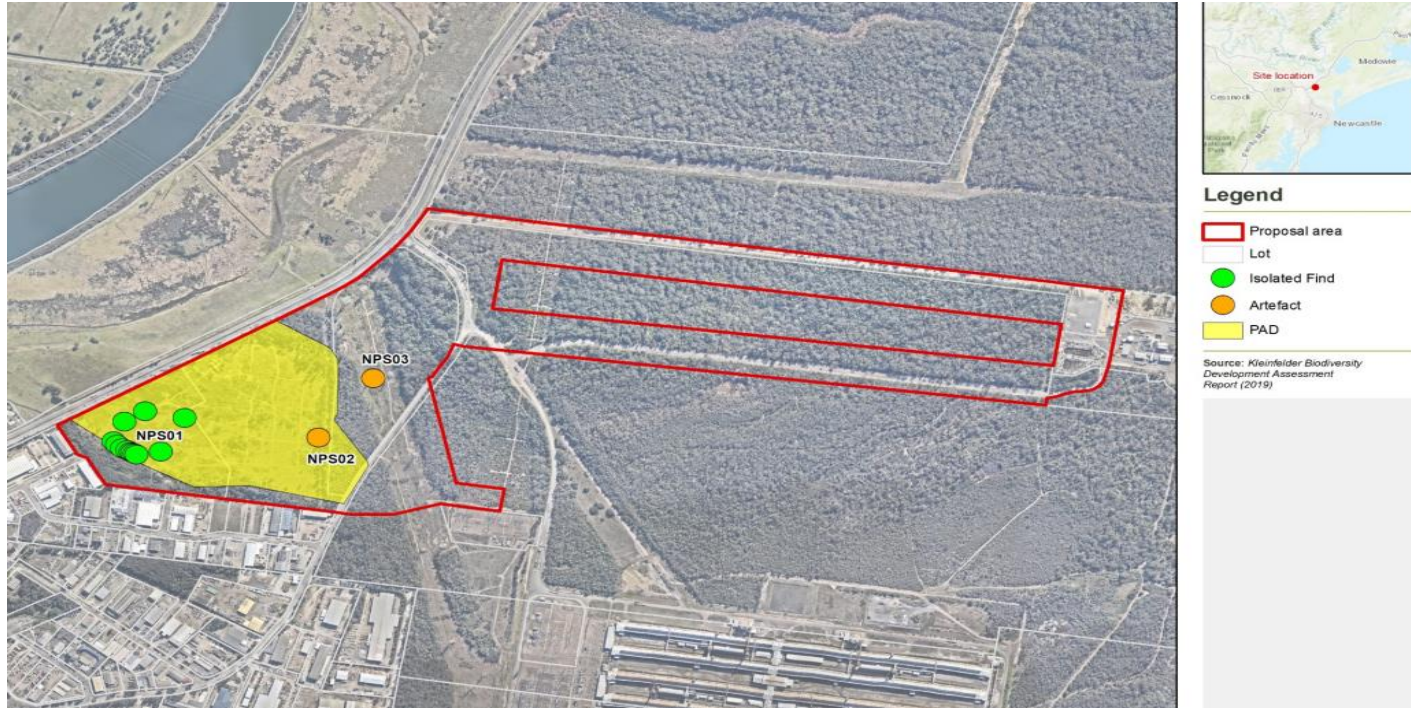
Key and other environmental issues

The EIS will detail any anticipated potential environmental impacts of a development on the environment, as well as proposing avoidance, mitigation and management.

Key Matters	Other Items
Aboriginal heritage assessment – Several sites present & 3 previously identified. Not likely to be socially, historically or scientifically significant.	Air quality – low impact likely.
Biodiversity – BDAR, no serious or irreversible impacts likely, offsetting tba.	Cumulative effects analysis – low impact likely.
Noise and vibration – low impact likely.	Non-indigenous heritage – Unlikely to identify features.
Hazard and risk – PHA to be undertaken (Fire safety manageable).	Social & economic - Minor positive and negative potential impacts likely.
Surface water, groundwater & hydrology – low impact likely.	Visual assessment – Low impact likely.
Traffic – Construction & Operational traffic likely to be negligible on existing network performance. Note M1 to Raymond Terrace project interface with TfNSW required.	Waste – low impact likely.

Aboriginal Heritage

(Sourced from Newcastle Power Station EIS – Nov 2019)



Matters of National Environmental Significance

MNES	MNEs within 10 km of the Project
World Heritage Properties	None
National Heritage Place	None
Wetlands of International Importance	1
Great Barrier Reef Marine Park	None
Commonwealth Marine Area	None
Listed Threatened Ecological Communities	7
Listed Threatened Species	83
Listed Migratory Species	64

Threatened species and likelihood – Moderate or greater



Scientific name	Common name	Conservation status	Likelihood of occurrence
<i>Grevillea parviflora</i> subsp. <i>parviflora</i>	Small-flower grevillea	Vulnerable	Recorded
<i>Phascolarctos</i> <i>cinereus</i>	Koala	Endangered	Moderate

- Site contains scattered, non-preferred trees that could form koala habitat. Koalas haven't been observed, and trees are not likely to be significantly affected.
- Numerous other MNES communities and species predicted to occur are considered to be of low likelihood following survey completed to date and habitat present within the subject land
- However, these will be addressed further in referral documentation and assessment

Community and Stakeholder Engagement



AGL will engage with key stakeholders during the preparation of the Environmental Impact Assessment (EIS) and beyond

State & Federal Government

- Relevant NSW and Federal Ministers
- Transport for NSW
- DPE
- Fire and Rescue NSW
- NSW Aboriginal Land Council
- CASA
- Department of Climate Change, Energy, Environment & Water (DCCEEW)
- Dept of Defence

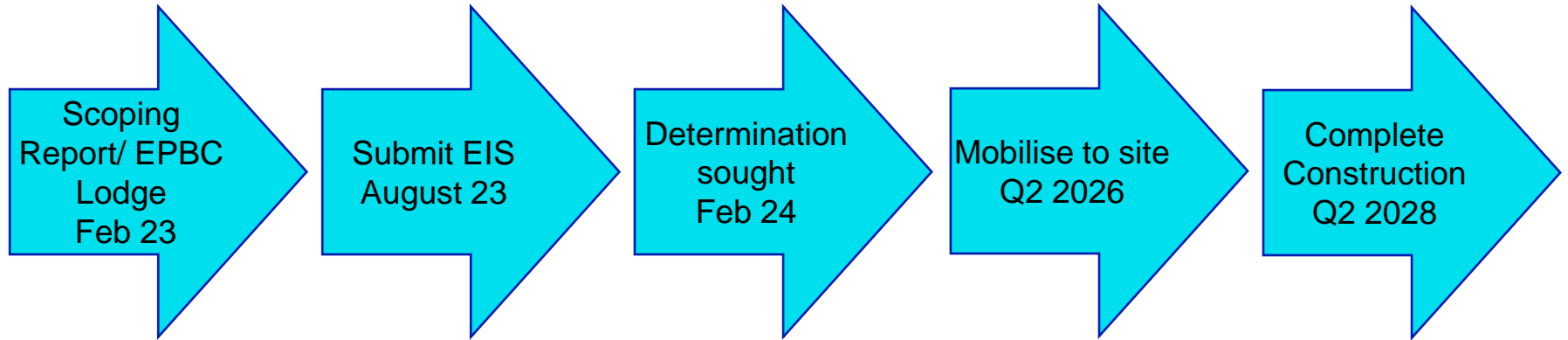
Local Government & Community

- Worimi Local Aboriginal Land Council
- Port Stephens Council
- Landowners
- Local community
- Rural Fire Services

Business Community

- Community Dialogue Group
- Transgrid
- Local business and chambers

Schedule



For discussion

1. Planning pathway
 - AGL intends to lodge a State Significant Development application
 - Existing SSI-9837 approval (15/3/21) Newcastle Power Station
2. General engagement over coming months
3. Anything else?



Questions



Newcastle Gas Storage Facility

Latest News

Newcastle Gas Storage Facility – General



- No major incident, MTIs or LTIs
- A break-in on Christmas eve. Perpetrators arrested the next day
- Major maintenance activities completed as planned
- Injection commenced late November 2022
- Injection is on hold for now due to low incoming pressure from Jemena network
- Regular third-party audits
- Better Mental Health training provided for the workforce
- New EA negotiations to commence on 27 Feb



Newcastle Gas Storage Facility – Community



Local Community Investment Program – Round 1 FY23

Hunter Region Botanic Gardens - \$5000 contribution to growing the Palm Gardens

A renewed garden will allow the many visitors to the gardens enjoy a tranquil walk-through landscaped palm gardens with the opportunity to learn about biodiversity and the place of the palm in the environment. There will be a diverse collection of palms from Australia and further afield including species threatened in the wild.



HUNTER REGION BOTANIC
GARDENS

Newcastle Fringe - \$5000 Primary Sponsorship

Continued partnership with the festival to support the development of independent performance artists and providing the community and visitors the opportunity to see affordable live performances while supporting local businesses.



Newcastle Show Honey making competition - \$2500 Sponsorship

Supporting backyard beekeepers through a honey making competition! This will include speakers representing the beekeepers to explain the wonderful world of native bees and pollination!



Local Community Investment Program – Round 2 FY23 Has opened!

Closing on Friday, 7 April 2023



AGL Update

2023 Half Year Result in line with expectations



1.7*

Total Injury
Frequency Rate

Reflects a disciplined and
sustained focus on safety
culture and performance

*Per million hours worked

\$(1,075)m

Statutory Profit
after tax

Including \$(706)m of
impairment charges
(post-tax)

\$87m

Underlying Net Profit
after tax

Down 55% on H122

65.2%

Commercial
Availability

Down 8.5 percentage
points on H122

+12

Record high Net
Promoter Score

Customers services
increased to
4.3 million

AGL is leading Australia's energy transition

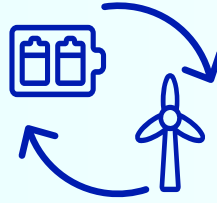
Connecting our customers to a sustainable future



4.3 million services provided nationally - helping our customers decarbonise the way they live, work and move



Transitioning our energy portfolio



Ambition to add up to 12 GW of new generation and firming by end of 2035, requiring a total investment of up to \$20 billion



We will enable this transformation by ensuring a strong foundation:



ESG at the forefront

ESG at the forefront of what we do; playing a pioneering role in sustainability beyond carbon



Future focused, high performing culture

Develop and embed a future focused, purpose-driven organisation with our people as the driving force



Technology at the core

Unlocking growth through technology, digitisation and AI - enhancing customer experience as well as trading, operational and risk management capabilities

AGL is making strong progress on delivering on its strategy

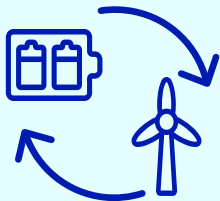
TODAY

Connecting our customers to a sustainable future



- Growth in customer services and record high NPS
- 199 MW of distributed energy under orchestration and #1 market share for Commercial Solar
- Leading technology investments unlocking simplification, digitisation and automation

Transitioning our energy portfolio



- Existing 3.2 GW pipeline of firming and renewables and access to >3.5 GW Tilt development pipeline
- 250 MW Torrens Island and 50 MW Broken Hill batteries anticipated operational in mid-2023
- Hydrogen feasibility studies underway at Torrens and Hunter hubs; feasibility study into Muswellbrook Pumped Hydro. Capacity upgrade of existing Clover Hydro

NEAR TERM FOCUS

- Accelerate growth of decentralised assets under orchestration and electrification, underpinned by new technology
- Propel growth in e-mobility starting with in-home charging
- Maintain Commercial Solar market leading position; expand C&I energy solutions portfolio
- Closure of Liddell Power Station on track for April 2023
- Deliver upon 850 MW grid-scale battery target by FY24 – focusing on accelerated development of 500 MW Liddell Battery (ARENA backed)
- Advance project pipeline to deliver upon 5 GW target by 2030



General business,
next meeting and
close

Contact



Jo Ferguson

Community Relations Coordinator

AGLCommunity@agl.com.au