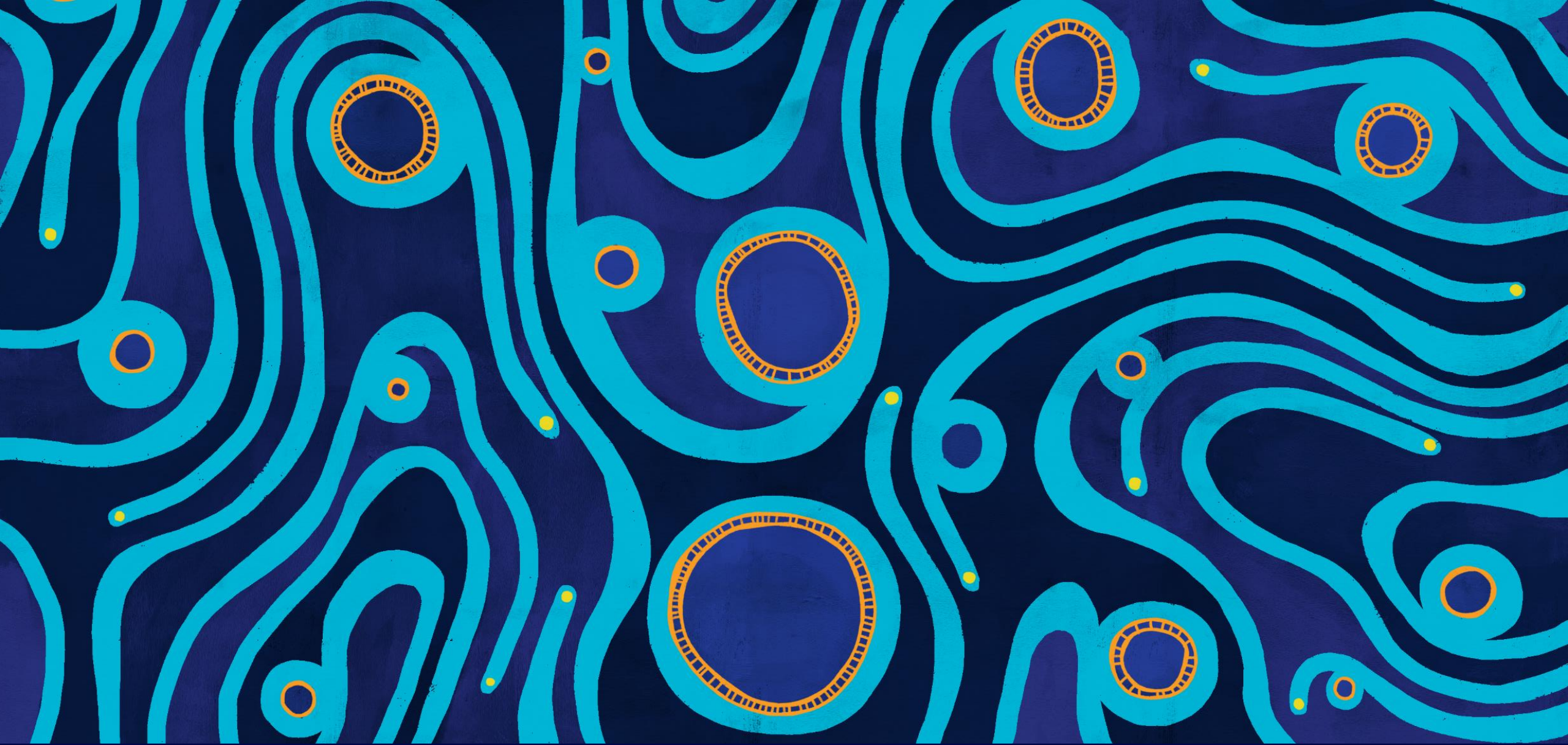


Newcastle Community Dialogue Group

Thursday, 16 November 2023





Before we begin, I would like to acknowledge the Traditional Owners of the lands on which we meet today and pay my respects to their Elders past and present.

Agenda

- 1 Open and welcome, apologies, declarations, previous minutes, business a rising and correspondence
- 2 Land and Approvals Update
- 3 Newcastle Gas Storage Facility latest news

- 4 AGL Update
- 5 General business, next meeting and close

Tomago Battery Project

Post EIS Submission Briefing
CDG/AGL
November 16, 2023



Agenda

1

Introductions

2

Project Overview

3

Environmental Assessment
Approach

4

Schedule

5

Discussion

Project Overview

To construct, operate and maintain a Battery at Tomago, NSW:

- Approximately 500 megawatts (MW) and storage of up to 2,000 megawatt-hours (MWh) in capacity
- Transmission line from the Battery land to either the 132kV Transgrid substation (north) or the 330kV Transgrid substation (south)
- Connection to an existing switchyard, including minor works to connect the Battery to the preferred neighbouring substation



250MW Torrens Island Battery, SA

Project Location

Land:

- Semi-rural/industrial area with industrial land uses located adjacent to and around the Site

BESS Site:

- 1940 Pacific Highway (Part Lot 5 & Lot 6 in DP1286735)

Transmission Connections:

- Across Lots 7, 8, 24, 25 and 28 DP1286735, Lot 104 DP1125747 and Lot 3 DP808004.
- The BESS would connect to either:
 - 132 kV substation located on Lot 101 DP1125747; or
 - 330 kV substation located on Lot 3 DP808004, and Lots 102 and 103 DP1125747.



The Site

- **Area** – Total site is ~22 ha.(Battery site is ~12 ha)
- **LGA** – Port Stephens Council
- **Zoning** – E4 (General Industrial)
- **Permissibility** - permissible with consent within the E4 land use zone under the T&I SEPP
- **Design** – will allow for known constraints



List of Environmental Chapters

Project Description		Noise and Vibration	
Hazards and Risks		Bushfire	
Biodiversity		Aboriginal Heritage	
Surface Water		Social and Economic	
Soils and Contamination		Air Quality	
Traffic and Transport		Non-Aboriginal Heritage	
Visual Amenity		Land Use	
Waste		Cumulative Impacts	

Key EIS Focus Areas

Noise and Vibration



- AECOM prepared a noise and vibration impact assessment that accompanied and informed the EIS.
- The noise assessment identified a single 2dBA exceedance (above the Noise Policy for Industry criteria). This exceedance is considered negligible in accordance with the NPfI. The affected residence has been consulted with, during the preparation and finalisation of the EIS.
- Management and mitigation measures have been captured within the EIS and supporting technical assessment to reduce the potential impact because of the Project.

Traffic and Transport



- AGL has had ongoing consultation with TfNSW to support the preparation of a Traffic Impact Assessment (prepared by AECOM), which supported the EIS.
- The associated traffic impacts are largely limited to the construction phase.
- The project has proposed the use of the NGSF site as a temporary construction laydown area to minimise offsite impacts during the project construction.
- AGL is working in close consultation with TfNSW to manage the cumulative impact of the M12RT Project.

Key EIS Focus Areas cont...

Surface Water



- AECOM prepared a surface water impact assessment, which accompanied the EIS.
- The SWIA included an assessment to achieve NorBE outcomes (i.e., neutral or beneficial effect)
- The Project proposed to connect into two discharge points on the western portion of the site, which was supported by MUSIC modelling to achieve quality outcomes.
- The Project includes a number of detention basins to control the quantity of discharge to downstream receivers, in accordance with Landcom Blue Book (2004). This is supported the DRAINS modelling.

Biodiversity



- A Biodiversity Development Assessment Report was prepared by Biosis to assess the potential biodiversity impacts in accordance with the Biodiversity Assessment Method.
- The BDAR was supported by a number of seasonal and targeted surveys (including bat and koala monitoring)
- The BDAR has adopted the avoidance hierarchy – with nominated exclusion areas to avoid areas of high biodiversity value.

Hazards analysis



- A Preliminary Hazards Assessment has been prepared by Planager in consultation with both DPE and NSW RFS.
- The PHA has accounted for a number of scenarios as part of a multi criteria analysis, with a swathe of recommendations that informed the design of the Project to minimise the potential risk associated with the Project.

Community and Stakeholder Engagement

AGL will continue to engage with key stakeholders throughout the Environmental Impact Assessment (EIS) and beyond

State & Federal Government

- Relevant NSW and Federal Ministers
- Transport for NSW
- DPE
- FRNSW
- NSW Aboriginal Land Council
- Department of Climate Change, Energy, the Environment and Water (DCCEEW)

Local Government & Community

- Worimi Local Aboriginal Land Council
- Port Stephens Council
- Landowners
- Local community
- NSW RFS
- Koala Steerco

Business Community

- Community Dialogue Group
- Newcastle Airport
- TAC
- Transgrid
- Local business and chambers

Schedule



For discussion

1. Stakeholder Engagement:

- Company briefings
- Open Days – location tba
 - 4-6pm Wednesday 29th November
 - 9-11am Saturday 2nd December

2. Other matters



Questions

NGSF Update

- No major incident, MTIs or LTIs
- Workforce re-structure complete
- New EA approved and signed
- Minor security breach. Additional measures in place
- Major maintenance activities completed as planned
- Compressors overhaul complete
- Startup liquefaction planned for today



Environment update (John M)

1. Bushfire Threat Assessment – next week
 - AGL has commissioned a third party qualified bushfire assessor to conduct a review of the NGSF
 - This will involve investigation of six key areas:
 - 1.Site access
 - 2.Asset Protection Zones
 - 3.Utilities
 - 4.Firewater storage
 - 5.Landscaping
 - 6.Emergency Management

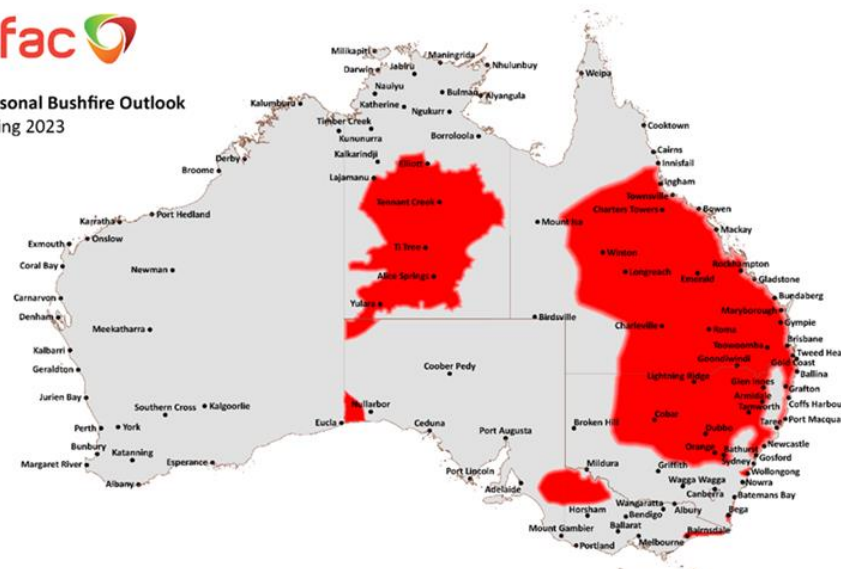
2. Amendment to Env. Licence
 - AGL was successful in reducing the frequency of emissions testing from annually to once every five years
 - This followed a site visit from the regulator and the provision of operational data
 - There is no relaxation of the pollution limits and a complaints process is in place to protect the community.

Environment update (John M)

1. Wetland ponds
 - AGL has removed excess vegetation within the ponds to improve efficiency
2. Landscaping
 - AGL has removed excess leaves from around the flare compound as a fire precaution measure



Seasonal Bushfire Outlook
Spring 2023



Newcastle Gas Storage Facility – Community

Partnerships FY24



Join the change

Hunter Region Botanic Gardens - \$10,000

AGL NGSF has been supporting the gardens for 7 years. An annual contribution of \$10,000 will allow HRBG to carry out further infrastructure projects and initiatives so they continue to attract visitors from the hunter region and beyond.



Newcastle Fringe Festival - \$5000

AGL NGSF is a long-time supporter of the Newcastle Fringe Festival. The festival has grown from an audience of 660 in 2016 to 5200 this year! We continue to partner with the festival to support the development of local performance artists along with economic development for the area.



"I need to call out AGL for the continual year after year commitment they have been providing. They were supporting us when we more like Australia's Littlest Little Fringe and we really appreciate the opportunity to grow that they have provided us."

Rebecca Fitzgibbons – Newcastle Fringe Festival Board Member

Newcastle Show- \$5000

AGL NGSF continues commitment to Newcastle Show. For over 120 years, the Newcastle Agricultural and Industrial Association has provided an annual community platform for over 40,000 Novocastrians and over 280 local businesses to buy, sell, educate, innovate and celebrate all aspects of the Newcastle and Hunter Region.



The remainder of the annual community investment budget will continue to support our social license focus areas for greater social impact.

AGL Update



Join the change



Contact

Jo Ferguson
Community Relations Manager
AGL Hunter
Jo.ferguson@agl.com.au