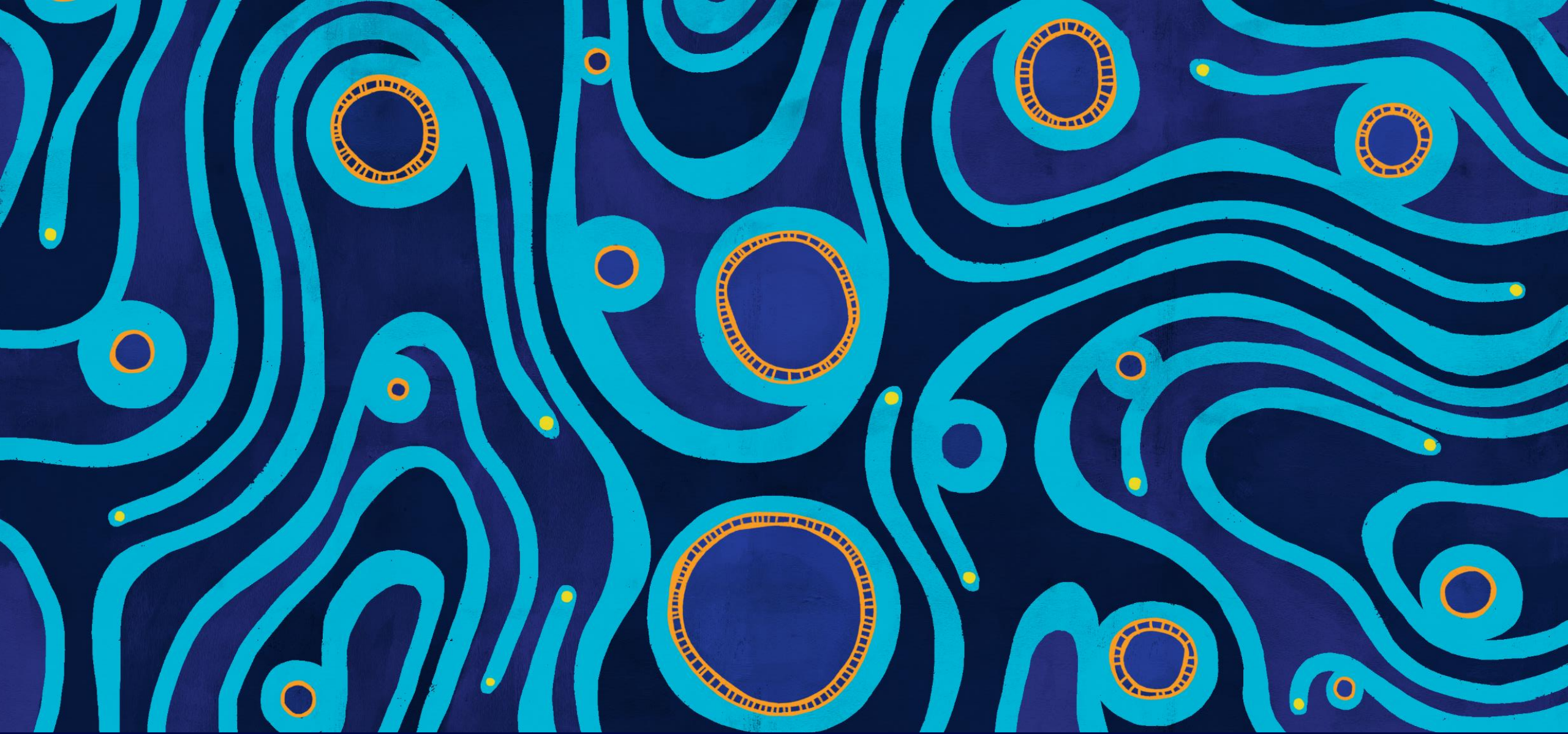


Newcastle Community Dialogue Group

Thursday, 29 August 2024





We are meeting today in the Hunter Region of New South Wales on the lands of the Worimi People.

We acknowledge the Worimi People as the Traditional Custodians of this land
and pay our respects to their Elders past and present.

Agenda

- 1 Open and welcome, apologies, declarations, previous minutes, business arising and correspondence
- 2 Newcastle Gas Storage Facility latest news
- 3 AGL Update

- 4 Tomago Battery Project Update
- 5 General business, next meeting and close

NGSF Update

- No major incident, MTIs or LTIs
- Major maintenance activities in progress due to complete by mid-September
- Send-out season complete
- Tank level down to 465 TJ down from 1,450 TJ
- 1st pigging campaign since completion of the plant
- Pipe cleaned internally
- Smart Pig – ILLI - ongoing
- Ready for Liquefaction
- Environmental activities and update in the following slides



Environment update (John M) - bushfire preparedness



Join the change

Bushfire preparedness -

- contractors have been onsite to oversee vegetation management for perimeter tracks
- contractors will be assessing whether a burn should occur in April 2025
- organising drone imagery to assess bushland and provide before/after comparison



Environment update – water monitoring

Latest monitoring report reviewed by AGL (Amelia/John)

AGL has kept Hunter Water (John Simpson) aware of all findings

Increasing nitrogen at MW14 (still below thresholds)

- Engaged with Ausgrid regarding concrete sewage tank at their facility nearby
- Site inspection conducted with Hunter Water, Ausgrid and AGL
- Plumbing tests to be carried out by Ausgrid (e.g. smoke test) to confirm if any leaks

Increasing dissolved chromium at MW14 (still below thresholds for hexavalent)

- Unsure of the source
- Have reviewed historical photographs and cannot ascertain source
- Further monitoring in September 2024

Environment update – water monitoring

AGL has commissioned GHD to review the historical water monitoring results (7 years of data) and provide advice on tailoring the program

Our instructions are that any changes must not increase the risk of environmental harm being caused or threatened

GHD will look at the data and determine whether any changes can be justified

- Frequency of monitoring
- Parameters that are monitored at each bore

Any proposed changes will be socialised to the community group, esp. Hunter Water.

Environment update (John M) - priorities

Wetlands – vegetation removal has occurred to restore full functionality, large trees (Angophora) will be treated in-situ to avoid roots causing damage to liner

Weeds – no further sightings of Pampas Grass. AGL is preparing an Integrated Weed Management Plan to cover all sites including NGSF

Medowie Offset Property – all monitoring was completed for the year and a report will be produced soon

- Camera monitoring captured deer, but no cats or foxes this year
- Security upgrades have occurred (gates, fences, locks)
- Ecological monitoring completed (plots)
- Weed surveys conducted

AGL in the Community



- Donation of PS4 and additional controller to gift the youth space
- Donation of 10 redundant AGL work phones with purchase of 10 new chargers

Guparr Aboriginal Men's and Youth Shed



Join the change

A space where Aboriginal elders hope to encourage participation, create opportunities and change public perception while offering young people knowledge and guidance.



Our Partnership with Hunter Region Botanic Gardens

The Hunter Region Botanic Gardens is an environmental hub for the region supporting and educating many community groups, volunteers, schools and visitors from the Hunter and beyond.

Achievements from funding:

- Information and directional signage to enhance the visitor experience and to improve safety.
- Purchase of gazebos for events such as educational workshops, community activities, information booth on fair days and plant sales.
- Purchase of modern café furniture for the new outdoor area.
- Purchase of laptop to support volunteers in learning new digital skills and support administration of the garden's activities.
- Purchase of an urn and music equipment to support the community activities.

Projects planned for FY25:

- Utility Project – purchase of a large storage tank and timing device for distribution of treated wastewater outside of peak visiting times.
- Shade Shelter – to build a community shelter in the palm garden for people to gather and enjoy the palms and rainforest setting with distant views to the wetlands



AGL Update



Join the change



FY24 Full-Year Results

14 August 2024



Strong earnings underpins investment in the energy transition and returns to shareholders



RESULTS SUMMARY







- **Underlying EBITDA up 63%** to \$2,216 million; **Underlying NPAT up 189%** to \$812 million
 - Significantly improved fleet availability and portfolio flexibility, including a solid earnings contribution from the Torrens Island Battery, more stable market conditions coupled with the impact of higher wholesale electricity pricing from prior periods being reflected in pricing outcomes and contract positions, and strong Customer Markets performance
- **Operating free cash flow up 169%** to \$1,355 million¹, driven by higher earnings
- **Final dividend of 35 cents per share** (unfranked), **Total dividend** of FY24 of **61 cents per share** (unfranked), equating to a total payout ratio of 50% of Underlying NPAT for FY24



GUIDANCE

- **FY25 guidance:**
 - **Underlying EBITDA** between **\$1,870 million** and **\$2,170 million**
 - **Underlying NPAT** between **\$530 million** and **\$730 million**

Embracing ESG – strong progress on our ESG focus areas

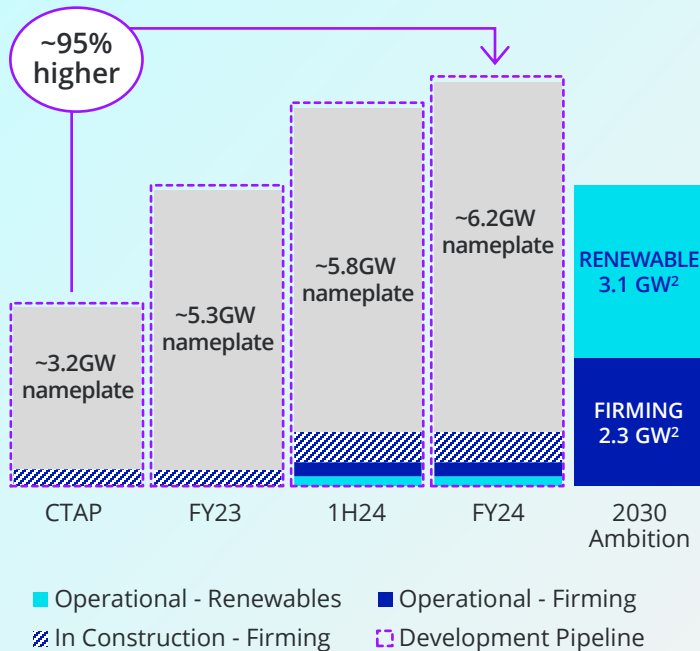
 Decarbonisation and portfolio transition	 Safety	 Gender equality and representation	 Reconciliation (procurement and recruitment)	 Community acceptance and social value	 Affordability
<ul style="list-style-type: none"> Annual operated Scope 1 and 2 greenhouse gas emissions down 23% in FY24 against FY19 baseline, versus CTAP target of 17% Development pipeline grown to 6.2 GW* Decentralised assets under orchestration increased to 1.25 GW 	<ul style="list-style-type: none"> To prevent injuries occurring and improve TIFR, increased focus on leadership training, and site specific safety awareness programs Continued focus on physical and psychosocial education and awareness programs Investment in operational engineered solutions and asset integrity 	<ul style="list-style-type: none"> Met target for proportion of women in our Senior Leadership Pipeline Median gender pay gap for total remuneration 3.9 percentage points from 2023 Respect@AGL training delivered to over 3,000 employees 	<ul style="list-style-type: none"> Over \$5.9 million of goods and services purchased from First Nations owned businesses, exceeding RAP target Launched Employee Value Proposition for First Nations employees Self-identifying First Nation employees increased from 19 to 39 	<ul style="list-style-type: none"> Invested \$6.0 million in the communities in which we operate Supporting organisations that deliver help to those in need (The Salvation Army, OzHarvest, Singleton Neighbourhood Centre and the Upper Hunter Homeless Support) 	<ul style="list-style-type: none"> Two-year Customer Support Package increased by \$20m to \$90m Delivered >\$56m in payment matching and debt relief Supported around 17,000 customers moving off our Staying Connected hardship program

* As at 14 August 2024.

Almost doubled our development pipeline to 6.2 GW¹, with continued focus on increasing optionality

Continued pipeline growth

AGL has almost doubled its development pipeline since the CTAP¹



Delivering against targets

~1 GW projects in operation,
under construction or contracted



Torrens Island Battery (250 MW / 1 hr): **In operation**

Broken Hill Battery (50 MW / 1 hr): **In operation**

Liddell Battery (500 MW / 2 hr): Under construction

Rye Park Wind Farm (178 MW): PPA signed

Demonstrated progress

Development pipeline accelerated,
new options added

Key milestones achieved

- ✓ Planning approvals received for Bowmans Creek Wind Farm (Stage 1)
- ✓ Muswellbrook Pumped Hydro project has received CSSI³ declaration from NSW Department of Planning, providing an acceleration pathway
- ✓ Feasibility licence awarded for 2.5 GW Gippsland Skies Offshore Wind⁴
- ✓ AGL entered into a Joint Venture with Someva to develop Pottinger Energy Park (1,200 MW wind, 500 MW / 4 hr battery, 300 MW solar)
- ✓ Development applications submitted for Barn Hill Wind Farm and Pottinger Wind Farm

>400 MW fast start gas options added to the development pipeline (Barker Inlet Power Station 2 +250 MW, Kwinana Swift Gas 2 +180 MW) - highlighting the role of gas to firm new renewable generation, whilst continuing to develop hydro and other long-duration projects

1) As at 14 August 2024; AGL's development pipeline was disclosed as 3.2 GW in its inaugural Climate Transition Action Plan (CTAP), released in September 2022.

2) Nameplate and contracted capacity.

3) CSSI – Critical State Significant Infrastructure.

4) Gippsland Skies Offshore Wind is a consortium comprised of Mainstream Renewable Power, Reventus Power, DIRECT Infrastructure and AGL Energy, in which AGL has a 20% interest.

The development pipeline is accelerating, with new firming options added

- AGL continues to build a strong development pipeline that is diversified by technology and geography, enabling AGL to prioritise and sequence developments to respond to market signals
- Targeting earlier FID dates across the development pipeline to provide AGL with more energy procurement options
- AGL expects majority of firming capacity to be funded on balance sheet and majority of renewable generation capacity via joint ventures, partnerships and offtakes
- A portion or all of capital used to build wind projects is expected to be recycled

PROJECT	TYPE	STATUS	CAPACITY/DURATION	FID TARGET
IN OPERATION: 300 MW				
Torrens Island Battery (SA)	Firming	In operation	250 MW / 1 hr	N/A
Broken Hill Battery (NSW)	Firming	In operation	50 MW / 1 hr	N/A
DEVELOPMENT PIPELINE: 6.2 GW¹				
Liddell Battery (NSW)	Firming	Under construction	500 MW / 2 hrs	N/A
Barn Hill Wind Farm (SA)	Renewable	In development	270 MW	FY25-26*
QLD Battery 1 (QLD)	Firming	In development	500 MW / 4 hrs	FY25-26
Bowmans Creek Wind Farm (NSW)	Renewable	In development	350 - 450 MW	FY26-27
Muswellbrook Pumped Hydro (NSW)	Firming	In development	400 MW / 8 hrs	FY26
NSW Wind Farm 1 (NSW)	Renewable	In development	450 - 500 MW	FY26-27*
Pottinger Battery (NSW)	Firming	In development	500 MW / 4 hrs	FY26
Pottinger Wind Farm (NSW)	Renewable	In development	1,200 MW	FY26
Tomago Battery (NSW)	Firming	In development	500 MW / 4 hrs	FY25-26*
Barker Inlet Power Station 2 (SA)	Firming	In development	250 MW	FY26-27
Kwinana Swift Gas 2 (WA)	Firming	In development	180 MW	FY26-27
SA Battery 1 (SA)	Firming	In development	270 MW / 4 hrs	FY28-29
VIC Wind Farm 1 (VIC)	Renewable	In development	550 - 700 MW	FY28
EARLY-STAGE OPPORTUNITIES: 6.6 GW				
Gippsland Skies Offshore Wind ²			~2.5 GW	Subject to ongoing development assessment
Other Renewables			0.9 GW	
Other Firming			3.2 GW	
TILT RENEWABLES DEVELOPMENT PIPELINE³ > 3.5 GW				

1. As at 14 August 2024.

2. Gippsland Skies Offshore Wind is a consortium comprised of Mainstream Renewable Power, Reventus Power, DIRECT Infrastructure and AGL Energy, in which AGL has a 20% interest.

3. AGL has 20% ownership in Tilt Renewables.

* Projects now targeting an earlier FID date (relative to FID dates disclosed in the HY24 Results presentation in February 2024).

The acquisition of Firm Power and Terrain Solar significantly strengthens AGL's development pipeline and options

Overview of the acquisition:

- AGL has entered into a binding agreement for the acquisition of 100% of the shares in Firm Power and Terrain Solar¹
- Firm Power is a Battery Energy Storage System (BESS) developer with 21 projects in development; Terrain Solar is a solar project developer with 6 solar and BESS projects and one wind project in development
- High quality development pipeline of primarily BESS projects strengthens AGL's firming and storage optionality:
 - Includes several mid-sized BESS projects, ranging between 200 MW to 500 MW / 2-to-8-hour durations, primarily across New South Wales and Queensland
 - The development projects have a strong match with AGL's customer portfolio position
- The proposed acquisition is subject to customary conditions precedent, with completion anticipated in 2024.

The combined development pipeline (8.1 GW) comprises:



6.1 GW of grid-scale BESS projects across:

New South Wales (2.3 GW), Queensland (2.7 GW), Victoria (0.3 GW), Western Australia (0.5 GW) and South Australia (0.3 GW)



1.8 GW² of solar projects across:

New South Wales (0.5 GW), Queensland (1.1 GW) Western Australia (0.1 GW) and South Australia (<0.1 GW)



250 MW onshore wind project in New South Wales

New firming capacity options under assessment and development

AGL is expanding its flexible asset options across asset classes – Pumped hydro, gas generation, next generation solar storage, coupled with an ambition to build and operate a leading battery portfolio in the NEM

- AGL is the largest private owner of hydro power stations and is developing further pumped hydro power stations (blue-field)
- AGL has an ambition to build and operate a leading battery portfolio in the NEM
- AGL is well positioned for incremental development of gas peaker options with access to flexible gas underpinned by sizeable storage and haulage portfolios



Muswellbrook Pumped Hydro Project

AGL and joint venture partner, Idemitsu Australia, welcomed the Muswellbrook Pumped Hydro project receiving Critical State Significant Infrastructure status from the NSW Government in July



PROJECT OVERVIEW:

CAPEX
>\$1B+

400 MW / 8hrs
storage

Asset life **~100 years**
(**4 - 5 times** battery storage)

Hydraulic head
470m to 500m

~3 GL Upper reservoir
water storage

Underground
Powerhouse design

Full underground waterways
to reduce environment impacts

1.5Km to Transgrid
330kV Substation

Approximately 4 years
to construct and commission

**If constructed the Muswellbrook Project
would be a world first to convert a coal mine
into renewable energy storage¹**

Significant progress across all three Energy Hubs including ten MoUs signed

HUNTER HUB

Stage 1

- Liddell grid-scale battery – Under construction (500 MW / 2hr)
- Bowmans Creek Wind Farm (350 – 450 MW)
- Muswellbrook Pumped Hydro (400 MW / 8hrs)

TORRENS ISLAND HUB






- Torrens Island grid-scale battery – Operational (250 MW / 1hr)

LATROBE VALLEY HUB

- Hydrogen Project pilot completed; Stage 2 feasibility in progress
- Loy Yang grid-scale battery (concept)

7.4 GW of flexible dispatchable capacity in operation or under construction places AGL in a strong position

Diverse set of assets that combined provides high portfolio flexibility

		Capacity	Response time
Grid-scale Batteries		1,000 MW¹	< 1 second Time from zero output to full output
Virtual Power Plants		1,250 MW²	1 second to 6 hours Time from sync to full load
Hydro		785 MW	< 5 minutes Time from sync to full load
Gas		1,110 MW	3.5 to 20 minutes Time from sync to full load
Coal		3,235 MW³	50 minutes to 2 hours Ramp up time from minimum to full load

- Batteries provide very fast frequency control ancillary services to maintain grid stability and reliability
- Battery storage is typically cycled daily to soak up renewable generation in the middle of the day, and discharge during evening peaks

- A virtual power plant (VPP) is a network of distributed energy resources including solar-powered homes and businesses that generate and store solar energy in batteries
- VPP's enable AGL to "load shift" to manage risk and help optimise its supply profile (E.g. Peak Energy Rewards demand response program; hot water orchestration)

- AGL's fleet of hydro power stations provide fast start and load flex capability
- Water reservoirs typically provide multi month duration of storage. This provides flexibility to meet daily peak demands, cover seasonal energy swings and protect against outages

- Gas-powered generation units have the flexibility to turn off during lower priced periods, and then turn on for high priced periods
- AGL's integrated gas portfolio allows flexibility of gas supply, including the ability to run for extended durations

- AGL has invested heavily in increasing the reliability, efficiency and flexible capacity of the coal-fired generation fleet
- Bayswater and Loy Yang A units can be flexed down ~70% and ~60% respectively, on nameplate capacity

1. Includes 500 MW Liddell Battery under construction

2. Includes smelters

3. Includes 90 MW across three units at Bayswater Power Station currently being registered with AEMO

Significant improvement in fleet performance, with higher availability and increased volatility captured



Positive outcomes from increased investment in thermal fleet

THERMAL FLEET COMMERCIAL AVAILABILITY¹

91.1% ↑ **15.2pp** vs FY23

- Higher equivalent availability factor at Loy Yang A of 12.5% and Bayswater of 8.2% compared to FY23
- Bayswater and Loy Yang A improvement in unplanned outage factor of 5.8% due to a rotor failure outage on Loy Yang Unit 2 in FY23 and fewer boiler tube leak outages in FY24
- Successful early delivery of both the major planned outage on Bayswater Unit 1 and pit-stop outage on Bayswater Unit 4



Stronger volatility capture driven by higher thermal fleet availability

VOLATILITY CAPTURED²

66.7% ↑ **9.3pp** vs FY23

- Volatility captured was significantly increased on FY23 due to improved availability of the thermal fleet
- Volatility captured was impacted by Loy Yang A's disconnection from the grid following the significant storm activity on February 13 and the failure of transmission lines and towers
- The return to full availability of AGL's hydro fleet is expected to provide further upside in FY25



Marginally higher generation volumes (normalised for Liddell Power Station closure in April 2023)

GENERATION VOLUMES³

34.1 TWh ↑ **6.8%** vs FY23

- Coal-fired generation was 12.1% higher than FY23³
- Gas generation was 19.3% lower due to lower market prices
- Renewable generation volume (wind, hydro and solar) was 12.3% lower
 - Hydro generation volume was 21.7% lower due to tunnel repairs; successful return-to-service after the McKay and Bogong hydro headrace tunnel repairs
 - Wind generation volume was 11.8% lower due to reduced capacity factors across wind farms, driven by lower yield and lower availability

1. Thermal commercial availability includes Bayswater and Loy Yang A Power Stations.

2. Value of volatility captured by generation divided by value if all capacity of dispatchable asset were generating.

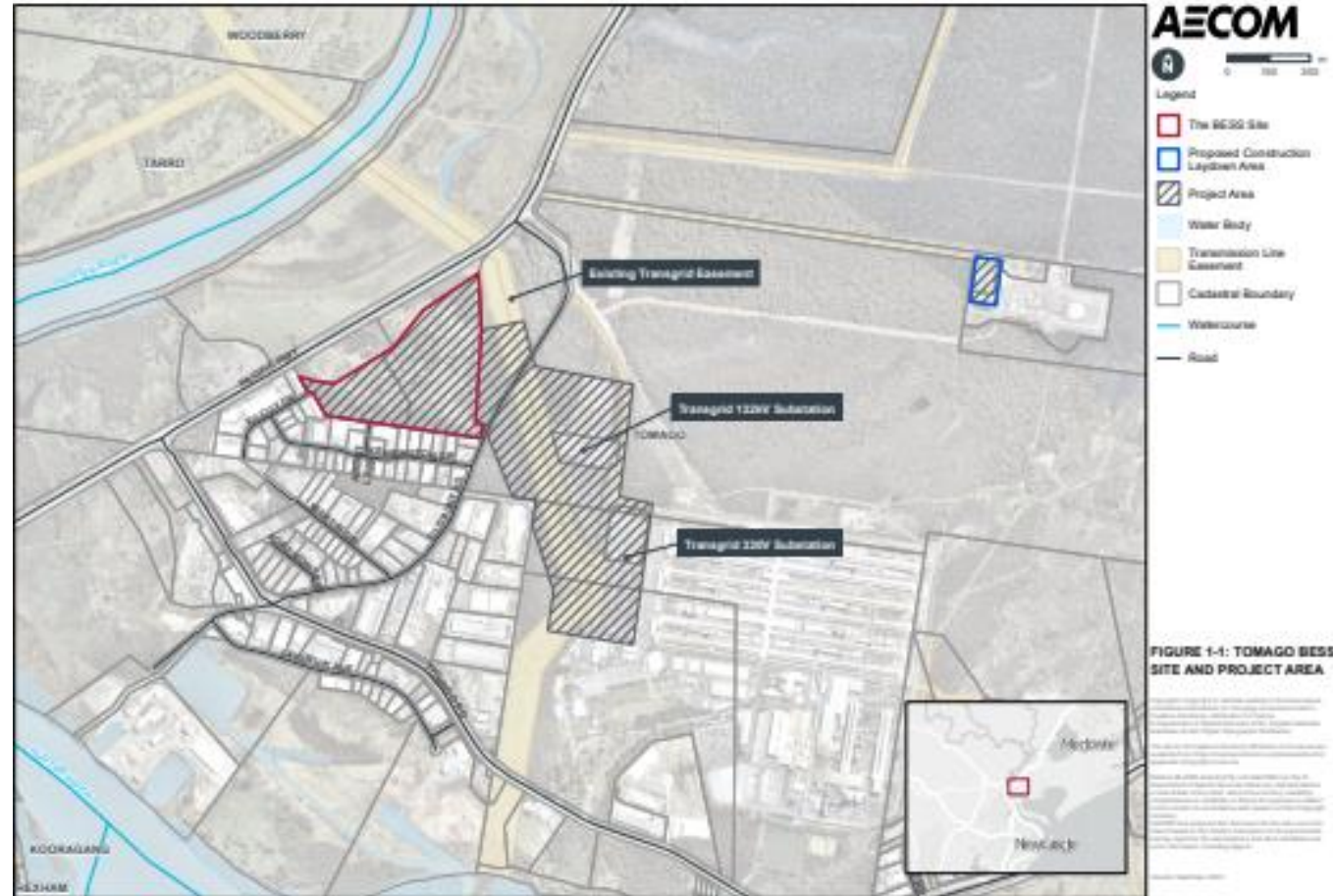
3. Excludes Liddell Power Station in FY23.

Tomago Battery Project



Key Project Details

- Project Capacity – 500MW / 2000 MWh (4 hours).
- Providing grid stabilising generation and electricity storage.
- Transmission line from the battery project site to either the 132kV Transgrid substation (north) or the 330kV Transgrid substation (south).
- Connection to an existing switchyard, including minor works to connect the Battery to the preferred neighbouring substation.
- AGL Community Grants Program to be initiated by project operation date in 2028.
- Procurement process ongoing - targeting local suppliers.



Schedule



Conditions of consent:

- 19/6/24 – AGL received Draft Conditions of Consent from DPHI
- 24/6/24 - AGL accepted the proposed conditions (however outlined some comments for consideration)

RFI:

- 19/6/24 - DPHI requested additional information re VPA and Old Punt Road access (NB: PSC discussions are ongoing)
- 5/5/24 -Biodiversity, Conservation & Science (BCS) provided recommendations
- 21/6/24 - AGL submitted response to BCS recommendations.
- 27/6/24 - BCS provided letter stipulating the need :
 - for additional surveys to meet the requirements of the Biodiversity Assessment Method (BAM) for inclusion in the Biodiversity Development Assessment Report (BDAR) for Small-flower grevillea, Leafless tongue orchid, Netted bottle brush, Singleton mint bush, Pterostylis chaetophora, Heath wrinklewort, Black-eyed Susan
 - for additional surveys to meet the requirements of the BAM for Pale-headed Snake
 - to develop species polygon for Large-eared Pied Bats and Eastern Cave Bats and generate associated credit liability
 - to develop species polygon for Squirrel Glider and generate associated credit liability

Approvals Status – BCS - Remaining Actions



Join the change

- AGL will update of BAM and BDAR with assumed presence for species nominated by BCS and associated generation of credit liability to facilitate approval of the project.
- Commitment to complete additional post-approval surveys to ensure surveys conducted within suitable species survey window. The BDAR will be revised to incorporate findings of additional surveys including a re-assessment of credit liability. Surveys to be conducted, as per BCS recommendations, and include:
 - targeted flora surveys in western area for Small-flower grevillea, Leafless tongue orchid, Netted bottle brush, Singleton mint bush, Pterostylis chaetophora, Heath wrinklewort, and Black-eyed Susan.
 - Pale headed Snake with funnel trap.
- Generation of polygon and credit liability for the Large-eared Pied Bats, Eastern Cave Bats and Squirrel Glider to meet BCS requirements

Questions

Contact

Jo Ferguson
Community Relations Manager
AGL Hunter
Jo.ferguson@agl.com.au