



# Newcastle Gas Storage Facility

Community Dialogue Group Meeting 5  
14 March 2018

# Agenda



1

Open and welcome  
Previous minutes  
Business arising

2

Local Community Investment  
Update

3

Modification 3

4

NSW Generation Plan

5

Next meeting  
Close

# Open and welcome

Previous minutes and business arising

# Local Community Investment Program



Following review of applications and further consideration by the CDG at our last meeting, we have determined that the following organisations will receive funding as part of the LCIP:

1. Native Animal Trust Fund - \$5,000
2. Hunter Life Education - \$5,000
3. Tanilba Bay & District Senior Citizens - \$5,000
4. Hunter Region Botanic Gardens - \$5,000

## **Next Steps:**

- Finalise sponsorship payment to the organisations
- Participate in community activities related to the sponsorships such as Hunter Life Education's World's Biggest Boot Car Sale which will be held on Saturday 19 May in Raymond Terrace

# Local Community Investment Program



- Round 2 of the LCIP kicks off on 5 April 2018 and we will accept applications until 3 May 2018

This advertisement will appear on Thursday 29 March in the following newspapers:

**Port Stephens Examiner**  
**Bay News of the Area**  
**Raymond Terrace News of the Area**

- We will also look at using Facebook and Twitter to advertise Round 2 of the LCIP
- The CDG will assess applications for Round 2 of the LCIP at the next meeting in mid-May



## Newcastle Gas Storage Facility Local Community Investment Program

Since June 2015, AGL has been safely operating the Newcastle Gas Storage Facility at Tomago, approximately 13 kilometres north-west of Newcastle. As a local employer and operator, AGL is committed to making a sustainable and positive contribution in the local community.

The Newcastle Gas Storage Facility Local Community Investment Program invests funds back into the community by way of financial support for community based initiatives, projects and event.

### The Program aims to:

- Deliver community wide benefits
- Encourage innovation in and support for issues of community significance
- Support the work of community organisations

The Local Community Investment Program is run bi-annually and awards funding for community initiatives within the Port Stephens and Newcastle Local Government Areas, of up to \$5,000. Applications for funding will be assessed by members of AGL's Newcastle Gas Storage Facility Community Dialogue Group.

### When can I apply?

Applications can be made between 9:00am Thursday 5 April 2018 and 5:00pm Thursday 3 May 2018.

### How to apply?

**Step 1:** Visit [agl.com.au/NGSFCommunity](http://agl.com.au/NGSFCommunity) and download the Newcastle Gas Storage Facility Local Community Investment Program guidelines and application form.

**Step 2:** Submit your application by 5:00pm 3 May 2018.

**Step 3:** AGL will contact you regarding the outcome of your application.

For more information, contact the Community Relations Manager via [AGLCommunity@agl.com.au](mailto:AGLCommunity@agl.com.au) or call AGL's 24-hour complaints and enquiries line on 1800 039 600.

# Modification 3

Update and next steps

# Modification 3

On 27 February 2018, the Department of Planning and Environment (DP&E) approved the Newcastle Gas Storage Facility MOD 3 under Section 75W of the *Environmental Planning and Assessment Act 1979*.

The modification includes constructing and operating a 4.5 kilometre low pressure liquid natural gas (LNG) pipeline between the gas storage facility and the adjoining Tomago Aluminium Company (TAC) smelter facility.

You can view the official determination here:

[http://majorprojects.planning.nsw.gov.au/index.pl?action=view\\_job&job\\_id=8840](http://majorprojects.planning.nsw.gov.au/index.pl?action=view_job&job_id=8840)

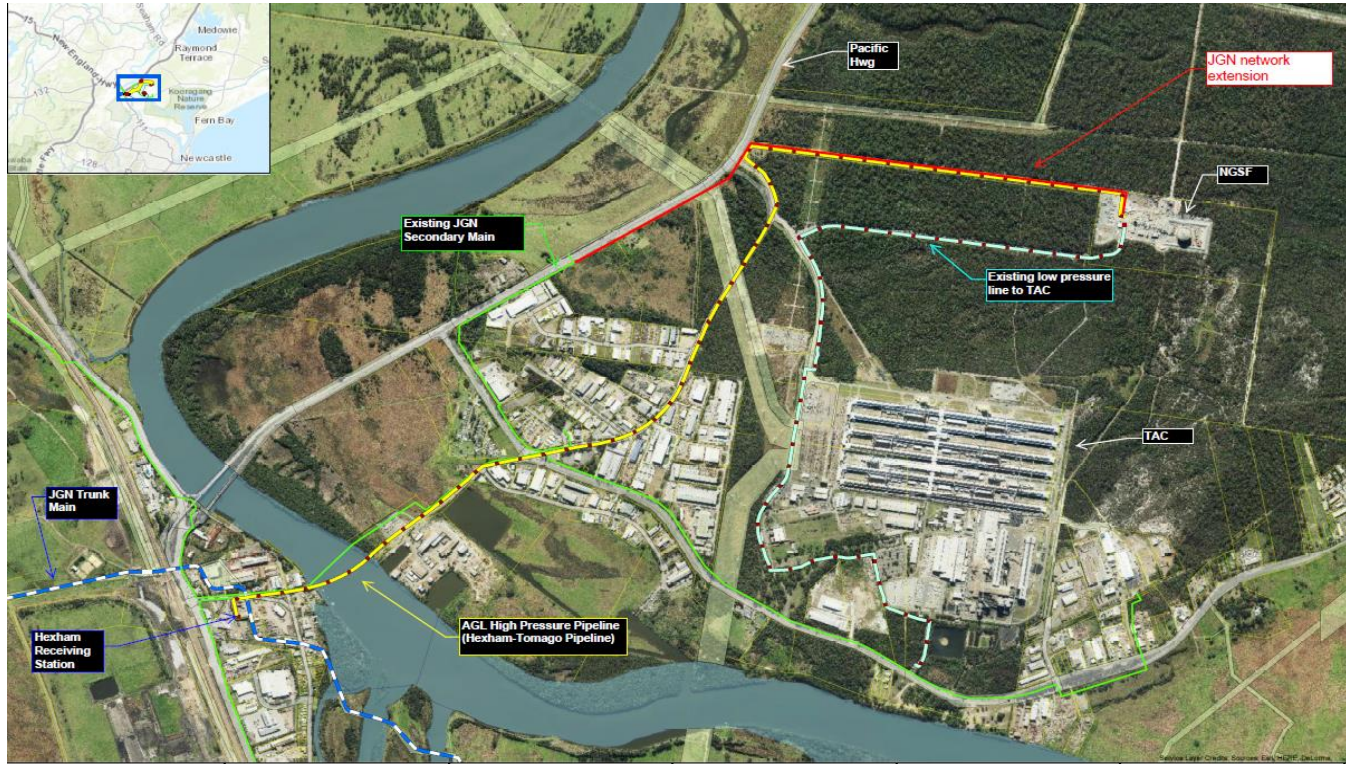
Next steps:

- Submit a variation application to the EPA for our Environment Protection Licence
- Update the Environmental Management Plan and submit to the DP&E.

AGL has drafted the following timeframe for construction:

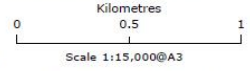
- Jemena construction period: May through to November 2018
- NGSF construction period: June through to October 2018
- Commissioning period: October to November 2018

# Modification 3



Author: Group Operations  
 Date: 23-02-17  
 Ref: 2628R14

## NGSF Gas Pipeline Route & Jemena Gas Network



Legend		Cadastral	
NGSF HP Pipeline	Jemena Gas Network	Strata, Stratum	
NGSF High Pressure Pipeline	JGN Trunk Pipelines	Water	
NGSF LP Pipeline	JGN Secondary Main	Lot Parcel	
NGSF Low Pressure Pipeline		Road	
		Easement	

Disclaimer: While AGL has taken great care and attention to ensure the accuracy of the data represented on this map, no liability shall be accepted for any errors or omissions. No part of this map may be reproduced without prior permission of AGL.

Sources: AGL Energy Limited, Omnilink PSMA Data, ESRI Imagery





Environment update

# Environment related work at NGSF



- Offset Property annual monitoring and weed management
- 6 monthly groundwater and surface water monitoring
- Air emissions monitoring on H101



# NSW Generation Plan

# NSW Generation Plan

Liddell replacement is AGL's preferred option compared to the proposal to extend the life of Liddell

## Liddell replacement

Preferred option

**Liddell Power Station closed in 2022 and repurposed with series of investments in new, low emissions generation and upgrades to existing generation**

- Staged approach to bring new investment online ahead of Liddell retirement
- Each phase will track timing, deliverables and completion dates of each new investment



**Newcastle gas peaker**  
250MW or other NSW sites



**NSW gas peaker**  
500MW



**Renewables**  
1600MW



**Demand response**  
up to 150MW



**Bayswater upgrade**  
100MW



**Liddell battery**  
250MW



**NSW pumped hydro**  
Feasibility



**Liddell synchronous condenser**  
Inertia and reactive power

**Total capital investment: ~\$1,360m**  
(of which ~\$490m in stage 1 projects)

**Levelised cost of energy: \$83/MWh**

**Asset life: 15 to 30 years**

## Liddell extension

**Work undertaken at Liddell Power Station to enable AGL to operate the station beyond 2022**

- Extending Liddell's life by five years to deliver 1000MW of peak capacity at reduced availability
- Analysis has been done to examine the costs and other risks associated with extending Liddell



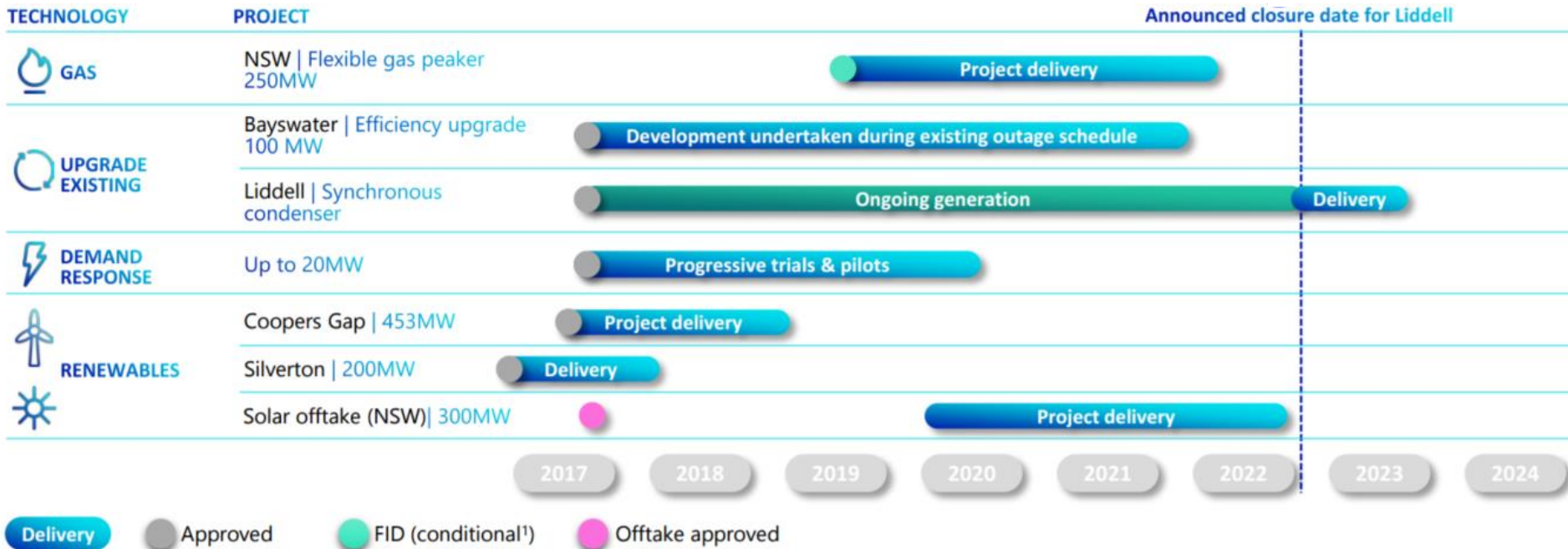
**Total capital investment: ~\$920m**

**Levelised cost of energy: \$106/MWh**

**Asset life: five years**

# NSW Generation Plan

Stage 1 (feasibility during 2019 or earlier)



1. Conditional final investment decisions will be subject to planning approval, EPC contract and connection agreement.

# NSW Generation Plan

## Feasibility of a gas peaker located at the NGSF or another suitable location in NSW

Gas fired peaking/intermediate power stations will form part of the electricity market's response when old coal fired power stations are withdrawn from the market, playing an increasingly important role by providing capacity to firm intermittent renewable generation.

The NGSF is one of the sites AGL are looking at, as well as elsewhere in NSW.

As well as the site, AGL are considering the best technology for the peaker, this could be reciprocating engines or gas turbines.

# General Business

Next meeting and close



**Lisa Andrews**

Independent Chairperson

0401 609 693

[lisaandrews.ic@gmail.com](mailto:lisaandrews.ic@gmail.com)

**Marina Draper**

Newcastle Gas Storage Facility  
Community Relations Manager

0498 020 244

[MDraper@agl.com.au](mailto:MDraper@agl.com.au)