

6 September 2017
Document No: NCA17L65206

Attention: Aaron Clifton
AGL Energy Limited
235 Old Maitland Road
Hexham NSW 2322

Delivered by email: aclifton@agl.com.au

Subject: 2017 Winter Nest Box Monitoring – Newcastle Gas Storage Facility

This report outlines the 2017 findings of the annual nest box monitoring program on the Newcastle Gas Storage Facility (NGSF) site at Tomago, NSW.

Background

In August 2012, 100 nest boxes were installed on AGL owned land adjacent to the NSGF as a requirement under Section 75J of the *Environmental Planning & Assessment Act 1979*, Application No. MP 10_0133. Due to the low number of large trees in regenerating native forest at the site the Minister for Planning and Infrastructure required 80 boxes to be mounted on treated timber posts which were cemented into the ground. The remaining boxes were placed on trees in mature forest. Four different box types were installed to suit a variety of arboreal mammals including:

- Sugar/Squirrel Glider (40 boxes);
- Brushtail/Ringtail Possum (15 boxes);
- Pygmy-possum (15 boxes); and
- Microchiropteran bat (30 boxes).

The Fauna Hollow Management Plan (AGL, 2012) specified annual inspections of boxes for five years to evaluate native fauna usage, and to ensure they remain operational and available for use.

Following the 2014 monitoring surveys, nine nest boxes were found to be destroyed by fire. All nine boxes were replaced in September 2014.

Monitoring methods

Two Kleinfelder staff with experience and accreditation in handling animals and working at heights attended the site on 29 and 30 August 2017.

Nest boxes were monitored using a wireless GoPro™ camera mounted on an extension pole capable of reaching heights of over 6 m. A live video feed is transferred wirelessly from the camera to an iPhone device capable of capturing still HD images or video. Images were captured in the field and processed in the office.

A handheld Global Positioning System (GPS), pre-loaded with co-ordinates, was used to locate the boxes. Once a box was located, the pole camera was used to open the lid and to observe the contents.

Status of the boxes were recorded as either:

- A – Animal present;
- E1 – Fresh evidence of use (i.e. fresh nest or scats);
- E2 – Moderately fresh evidence of use (i.e. green leaves but beginning to age);
- E3 – Old signs of use (i.e. old leaf nest, old scats);
- N – No evidence of use;
- NA – Not available for use; and
- X – Missing.

If a box was found to be occupied, an attempt was made to capture the animal for positive identification and to evaluate the health of the animal.

Signs of use include the presence of hair, scats or nesting material.

Boxes which contained wasp nests or other pest species, had lids which were open or missing, or had fallen or were missing/destroyed were deemed to be not available for use by target animals.

Results

In 2017, the total number of boxes exhibiting any signs of use was 51% compared to 54% in 2016, 62% in 2015 and 41% in 2014 (**Figure 1**). A total of 84 boxes were available for use in 2017, compared to 95 in 2016, 97 in 2015 and 81 boxes in 2014.

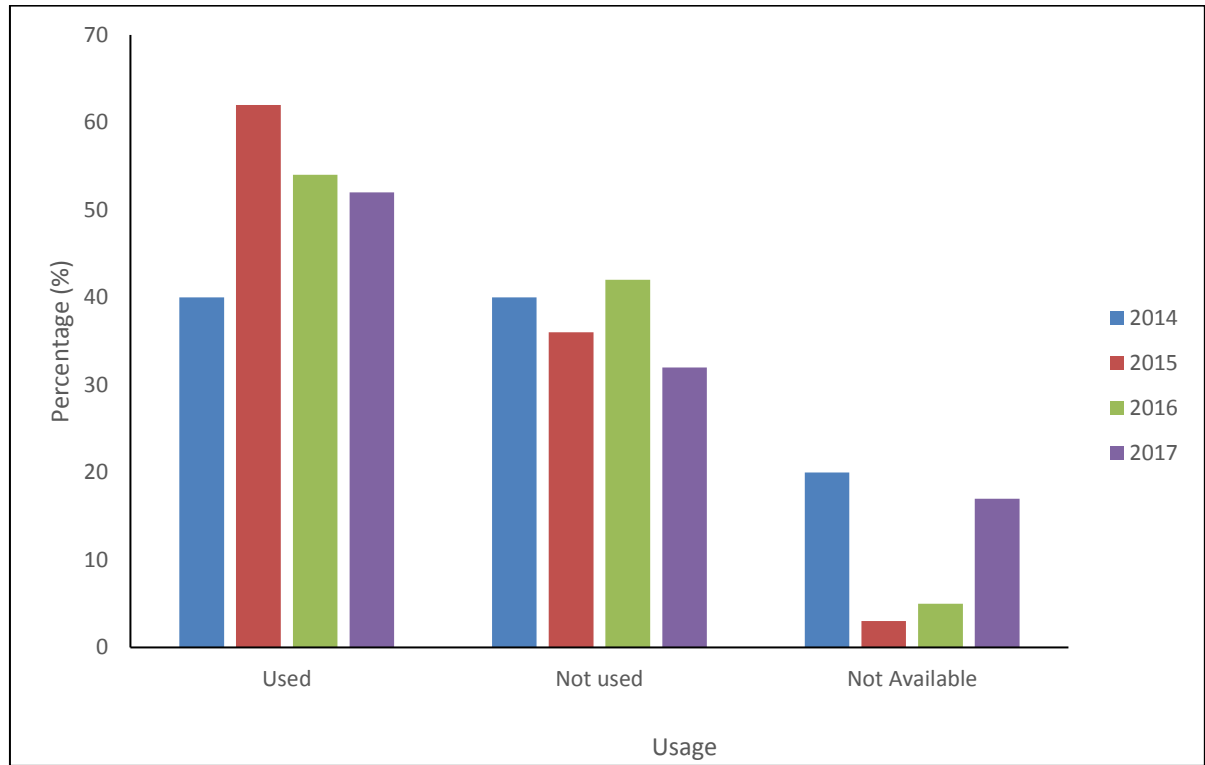


Figure 1: General usage rates of nest boxes

The number of animals present (A) declined in 2017 with five boxes containing animals, though one of these animals was dead (see **Table 1**). Eight boxes contained animals in 2016, nine boxes in 2015 and seven boxes in 2014. Recent evidence of use (E1 & E2) also saw a large decline in 2017 dropping from 38 in 2016 to 21. This value is still much greater than evidence obtained in the 2014 surveys, where only seven boxes showed recent evidence of use (**Figure 2**).

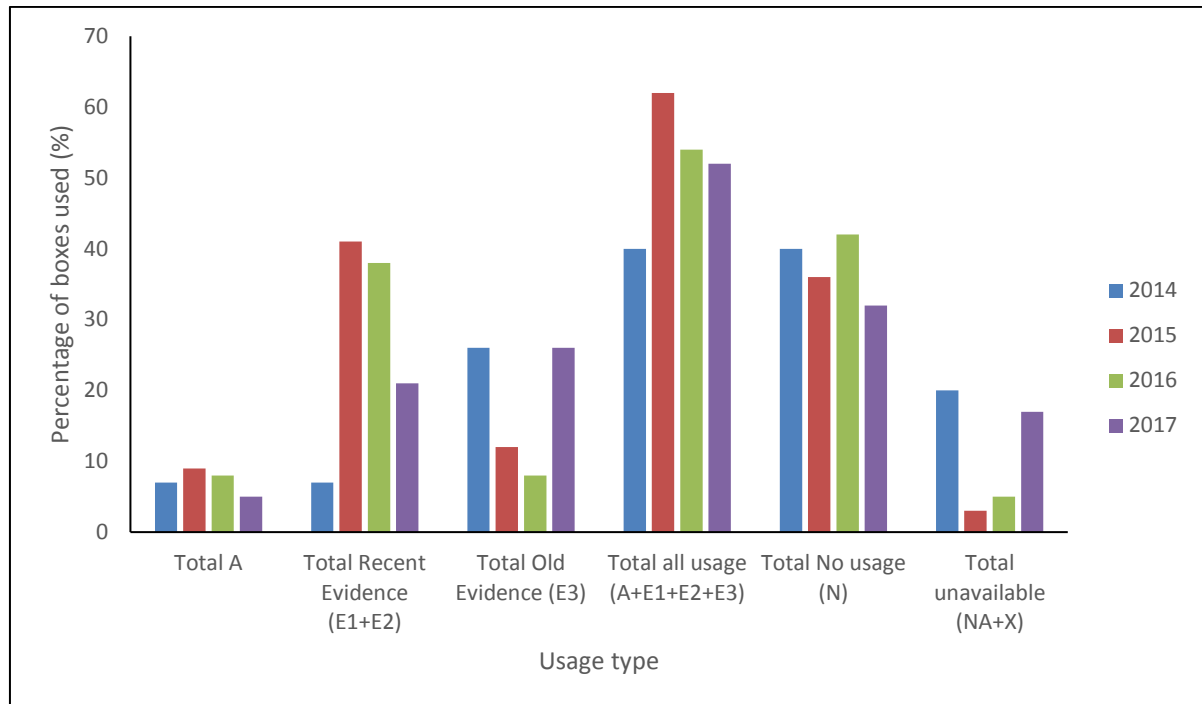


Figure 2: Detailed usage of nest boxes (n=100)

The total number of nest boxes with no signs of use in 2017 has decreased from 42 in 2016 to 32. However, total old evidence is much higher in 2017 at 26, compared to eight in 2016.

Unavailable box numbers increased considerably from five in 2016 to 17 in 2017, due to a number of nest box lids being open and the presence of mud wasp nests.

Usage per box type in 2017 remains relatively stable since the increase in usage observed in 2015 (**Figure 3**). Possum nest boxes saw a slight decline in use, most likely attributed to an increase in Possum box unavailability observed in 2017.

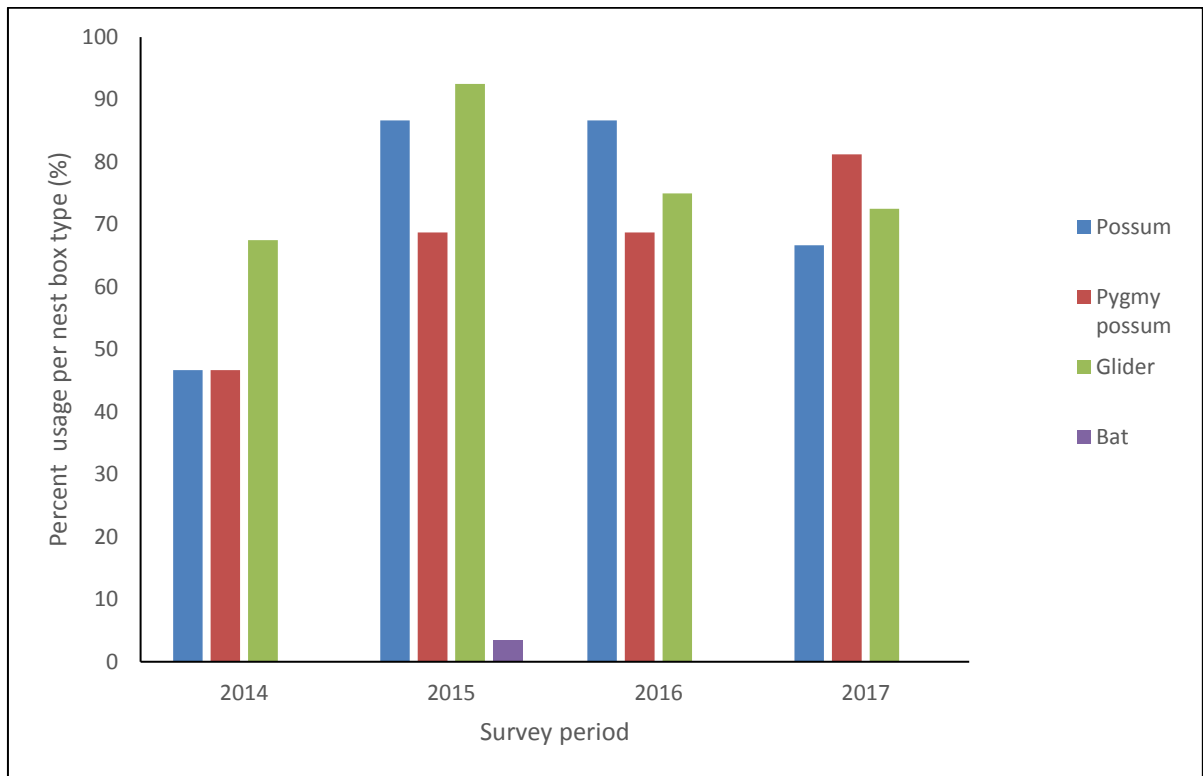


Figure 3: Usage per nest box type

Two fauna species were occupying the boxes in 2017; Common Brushtail Possum (*Trichosurus vulpecula*) and Squirrel Glider (*Petaurus norfolcensis*). Evidence of use by one other species, *Antechinus stuartii* (Brown Antechinus) was also present.

The Squirrel Glider is listed as Vulnerable under the *Threatened Species Conservation Act 1995* (NSW).

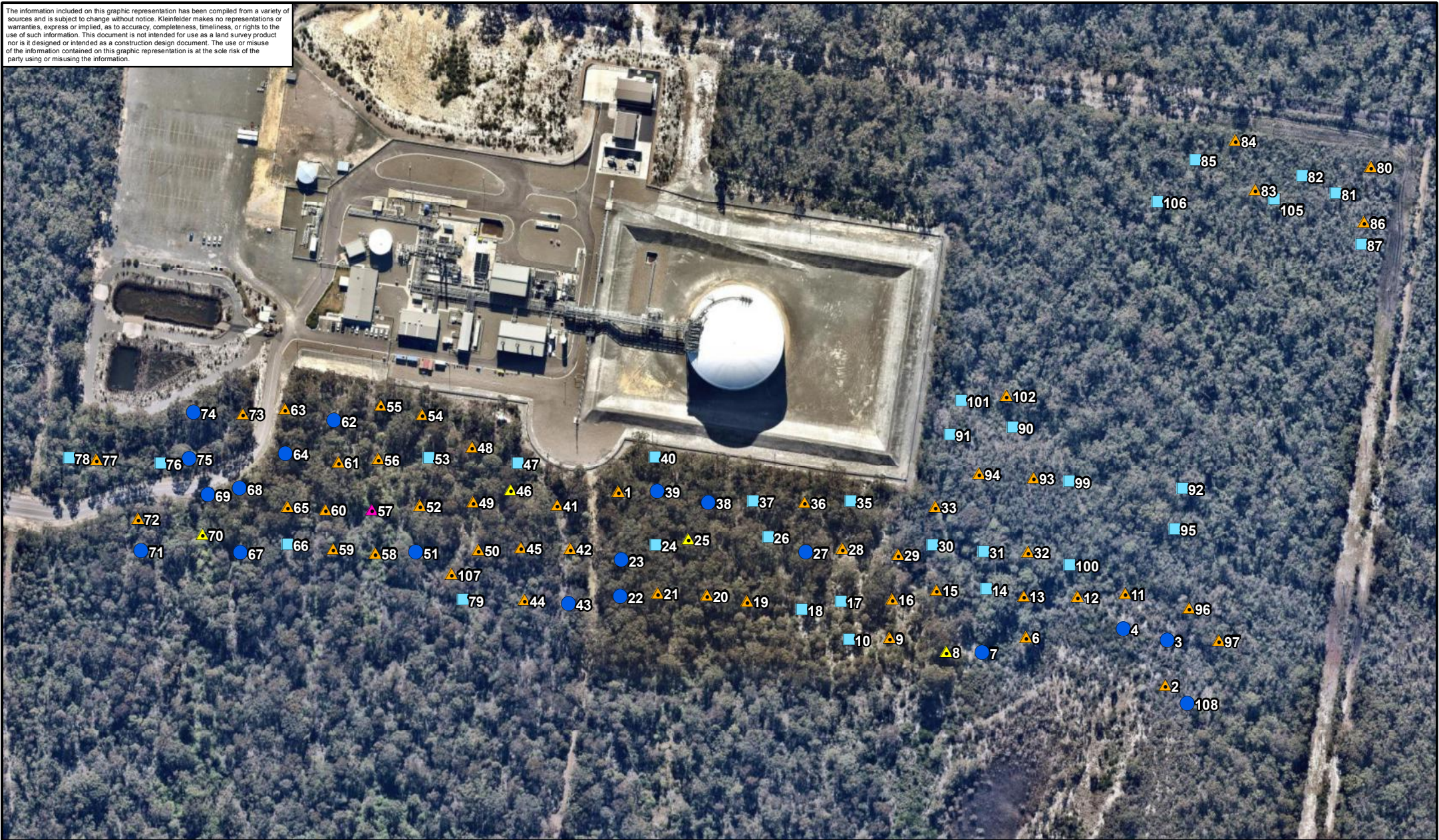
Six live animals in four nest boxes were physically present during the 2017 monitoring event, with one dead Glider also present in one box (**Table 1**). All species observed were utilising glider boxes or possum boxes.

Table 1: Actual animals present in 2017

Species recorded occupying box	No. Individuals	Box Type	Mount Type	Box no.
Squirrel Glider (<i>Petaurus norfolcensis</i>)	2	Sugar/Squirrel Glider	Post	8
Squirrel Glider (<i>Petaurus norfolcensis</i>)	1	Sugar/Squirrel Glider	Post	25
Squirrel Glider (<i>Petaurus norfolcensis</i>) with young	2	Sugar/Squirrel Glider	Post	46
Dead Glider (<i>Petaurus</i> sp.)	1	Sugar/Squirrel Glider	Post	57
Common Brushtail Possum (<i>Trichosurus vulpecula</i>)	1	Possum	Post	70
Total Live Animals	6			

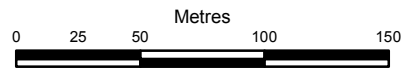
An overview of nest box locations and the results of the 2017 monitoring is shown in **Figure 4**. A selection of photographs taken during the 2017 survey are provided in **Appendix 1**.

The information included on this graphic representation has been compiled from a variety of sources and is subject to change without notice. Kleinfelder makes no representations or warranties, express or implied, as to accuracy, completeness, timeliness, or rights to the use of such information. This document is not intended for use as a land survey product nor is it designed or intended as a construction design document. The use or misuse of the information contained on this graphic representation is at the sole risk of the party using or misusing the information.



Legend

- ▲ Occupied
- ▲ Occupied with dead animal
- ▲ Signs of use
- No signs of use
- Unavailable



www.kleinfelder.com

PROJECT REFERENCE: 20181814
 DATE DRAWN: 9/6/2017 15:57 Version 1
 DRAWN BY: BDeane
 DATA SOURCE: nearmap - 2017

Nest Box Monitoring Results 2017

AGL Energy Ltd
 Nest Box Monitoring - Winter 2017
 Newcastle Gas Storage Facility
 Old Punt Road Tomago

FIGURE:

4

Discussion

The 2017 monitoring surveys recorded a combined usage rate (incorporating animals present, recent and old evidence of use) of 51% a slight decline of 3% from the 2016 survey. This rate of use is likely to be underestimated due to the difficulty of gauging use in current microbat nest box designs. Bat boxes contain an opening on the underside of the box, which means that scats and hair left by visiting microbats or other fauna are rarely retained within the box.

The high rate of nest box usage in young forest is consistent with other studies such as that conducted by Lindenmayer *et al.* (2009) who recorded an occupancy rate of 58% of boxes in 20 year old regrowth. Boxes placed in mature forest are not thought to be as well used by fauna due to the availability of natural hollows. This is consistent with the 2017 monitoring results where the usage or evidence of usage of nest boxes in the more mature forest in the east of the site was far lower than those boxes in the western portion of the site.

The 2017 surveys once again identified a higher rate of recent evidence compared to the 2014 survey, being 21% in 2017 and 7% in 2014. However, this is a decrease from 38% in 2016 and may be attributed to the high number of unavailable nest boxes, many due to the presence of mud wasp nests inside the boxes.

The species recorded in boxes in this study are consistent with arboreal species detected during baseline fauna surveys for the NGSF in 2009 and 2010 (ecobiological 2010). Although the threatened Squirrel Glider was detected from only one capture during baseline surveys, it was recorded three times using both glider (n=2) and pygmy-possum (n=1) boxes at the site in 2014 surveys, again in 2015 using solely glider boxes (n=6), in 2016 (n=4) and in 2017 (n=4).

In the 2015 surveys (Kleinfelder 2015) it was observed that Squirrel Glider adults were detected in nest box 50 in both 2014 and 2015 and juveniles were recorded in another box only 20 m north of box 50, thus indicating a successful breeding event. In 2016, a very fresh glider bowl was observed in box 50, and Squirrel Glider individuals were recorded in boxes 21, 45 and 51 (**Table 1**). The close proximity of records in 2016 indicated that once again successful breeding and dispersal of juveniles was occurring. Furthermore, in 2017 a Squirrel Glider female was observed in box 46 carrying a joey, confirming successful breeding. Signs of feeding on preferred feed tree species (*Eucalyptus gummifera*) was once again noted.

Fifteen Pygmy-possum boxes were installed at the site, as the area was thought to provide suitable habitat for this species. Eastern Pygmy-possum are difficult to survey for using conventional trapping and spotlighting techniques and it has been suggested that nest boxes may provide greater opportunities to detect this species through indirect evidence such as characteristic nests or hairs (Beyer and Goldingay 2006). No Eastern Pygmy-possum or their signs have been detected in the four monitoring events. These boxes are however frequented by Gliders, with several fresh bowls observed in these boxes in 2017.

Nest boxes at the site were installed consistently on warmer north-easterly aspects and so it is assumed that this would make them more likely to be occupied in winter. Other factors such as the presence of canopy shade may also influence the microclimate within the boxes.

Summary

The 2017 nest box monitoring program at the NGSF site found that the nest boxes installed continue to provide hollow dependent fauna with a den resource. The observation of the threatened Squirrel Glider and successful breeding events in both 2016 and 2017 is a positive sign for this species in the area.

Ongoing annual monitoring and maintenance of nest boxes is essential for the continued success of the program.

References

AGL Energy Ltd, 2012. Fauna Hollow Management Plan – Newcastle Gas Storage Facility Document Number NGSF-AGL-ISBL-EN-PLN-0002, 07 August 2012.

Beyer G and Goldingay R, 2006. The value of nest boxes in the research and management of Australian hollow-using arboreal marsupials. *Wildlife Research* 33(3), 161-174.

ecobiological, 2010. Flora and Fauna Baseline Report: Old Punt Road Tomago NSW, report prepared for Coffey Natural Systems Pty Ltd on behalf of AGL Energy Limited, Newcastle.

Kleinfelder, 2015. Nest Box Monitoring at Tomago, NSW. Report to Brett Hayward, 19 August 2015.

Lindenmayer, D, Welsh, A, Donnelly, C *et al* 2009. Are nest boxes a viable alternative source of cavities for hollow-dependent animals? Long-term monitoring of nest box occupancy, pest use and attrition, *Biological Conservation*, 142(1), 33-42.

APPENDIX 1 – 2017 FIELD PHOTOGRAPHS



Squirrel Glider using Box 25



Common Brushtail Possum using Box 70



Old Glider bowl and Antechinus scats in box 55



Feeding signs (sap feed scars made by Glider sp.) on a *Eucalyptus gummifera*