

# Newcastle Power Station Project

## Environmental Impact Statement

AGL has undertaken a comprehensive assessment of the potential impacts of the Newcastle Power Station Project. A brief summary of the environmental assessments for Biodiversity and mitigation strategies to manage any concerns for the Project are summarised below:



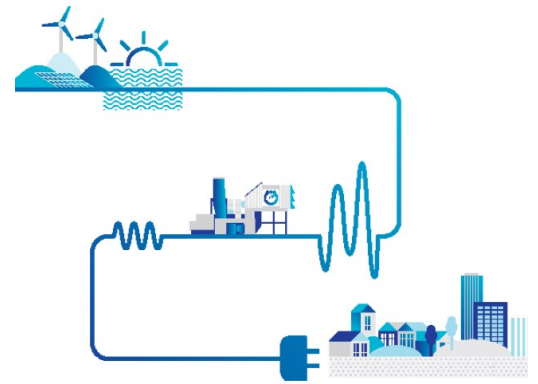
### Flora and Fauna

AGL has undertaken a thorough assessment of the potential impacts of the Project on flora and fauna, and designed the Project to reduce clearing vegetation and habitat by utilising previously cleared areas.

Due to the nearby existing infrastructure and agricultural land, this project is unlikely to fragment or impact the connectivity of the local fauna populations.

Several mitigation measures are proposed to ensure the Tomago sandbeds are protected and the impacts are negligible.

Of the approximate 25ha that Newcastle Power Station will impact, almost 9ha have been previously cleared for roads and infrastructure.



Of the remaining 15.5ha of native vegetation being cleared, more than 70% (11.2ha) is of low quality or managed vegetation, which is highly disturbed, mostly cleared of canopy trees and weed infested. The medium and high-quality vegetation portion of the remainder clearing will be offset.

The Project will require almost 4.5ha of habitat for squirrel gliders and koalas, which includes almost 2ha of cleared Endangered Ecological Community, Lower Hunter Spotted Gum – Ironbark Forest, and three trees of Earp’s gum.

Under the *Biodiversity Conservation Act 2016* all clearing is assessed and assigned a number of credits. This number of credits will determine the offset that the Project will contribute.

### To know more

Contact AGL on:

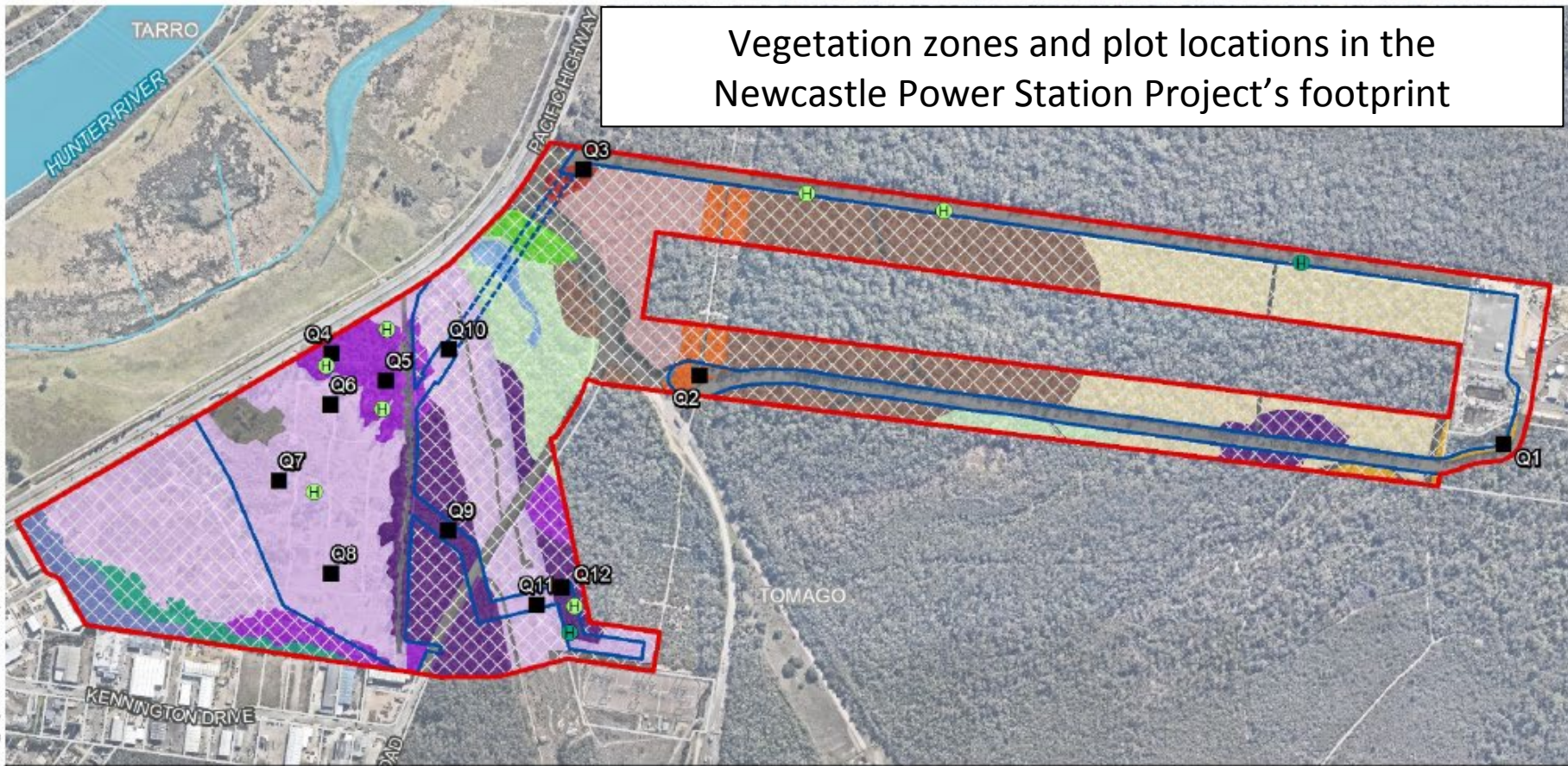
Email: [AGLCommunity@agl.com.au](mailto:AGLCommunity@agl.com.au)

Phone: 1800 039 600





# Vegetation zones and plot locations in the Newcastle Power Station Project's footprint



## Legend

- Proposal area
- Development Footprint
- HDD pipe alignment (No direct impact)
- Lot
- Watercourse
- Waterbody
- Plot Transect
- Hollow-bearing Tree
- Dead Stag

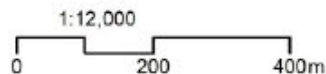
Source: Aurecon, AGL, LPI, Kleinfelder Nearnap, ESRI

### Plant Community Type and Vegetation Zone within the Development Footprint

- 1590: Spotted Gum - Broad-leaved Mahogany - Red Ironbark shrubby open forest (Moderate\_Good) - **Zone 1**
- 1590: Spotted Gum - Broad-leaved Mahogany - Red Ironbark shrubby open forest (Moderate\_Good\_EEC) - **Zone 2**
- 1590: Spotted Gum - Broad-leaved Mahogany - Red Ironbark shrubby open forest (Low) - **Zone 3**
- 1646: Smooth-barked Apple - Blackbutt - Old Man Banksia woodland on coastal sands of the Central and Lower North Coast (Managed) - **Zone 4**
- 1646: Smooth-barked Apple - Blackbutt - Old Man Banksia woodland on coastal sands of the Central and Lower North Coast (Managed Powerline) - **Zone 5**
- 1646: Smooth-barked Apple - Blackbutt - Old Man Banksia woodland on coastal sands of the Central and Lower North Coast (Rehabilitation) - **Zone 6**
- Cleared

### Plant Community Type outside Development Footprint

- 1590: Spotted Gum - Broad-leaved Mahogany - Red Ironbark shrubby open forest (Moderate\_Good)
- 1590: Spotted Gum - Broad-leaved Mahogany - Red Ironbark shrubby open forest (Moderate\_Good\_EEC)
- 1590: Spotted Gum - Broad-leaved Mahogany - Red Ironbark shrubby open forest (Low)
- 1646: Smooth-barked Apple - Blackbutt - Old Man Banksia woodland on coastal sands of the Central and Lower North Coast (Managed)
- 1646: Smooth-barked Apple - Blackbutt - Old Man Banksia woodland on coastal sands of the Central and Lower North Coast (Managed Powerline)
- 1646: Smooth-barked Apple - Blackbutt - Old Man Banksia woodland on coastal sands of the Central and Lower North Coast (Rehabilitation)
- Cleared
- 1071: Phragmites australis and Typha orientalis coastal freshwater wetlands of the Sydney Basin Bioregion (Moderate\_Good)
- 1235: Swamp Oak swamp forest of the coastal lowlands of the NSW North Coast Bioregion (Moderate\_Good)
- 1588: Blackbutt - Turpentine - Sydney Blue Gum mesic tall open forest on ranges of the Central Coast (Moderate\_Good)
- 1724: Broad-leaved Paperbark - Swamp Oak - Saw Sedge swamp forest on coastal lowlands of the Central Coast and Lower North Coast (Moderate\_Good)
- 1725: Swamp Mahogany - Broad-leaved Paperbark - Swamp Water Fern - Plume Rush swamp forest on coastal lowlands of the Central Coast and Lower North Coast (Moderate\_Good)
- Cleared



Projection: GDA 1994 MGA Zone 56