



Energy in  
action.®



## Silverton Wind Farm

Community Consultative Committee Meeting | 27 March 2013

# Welcome

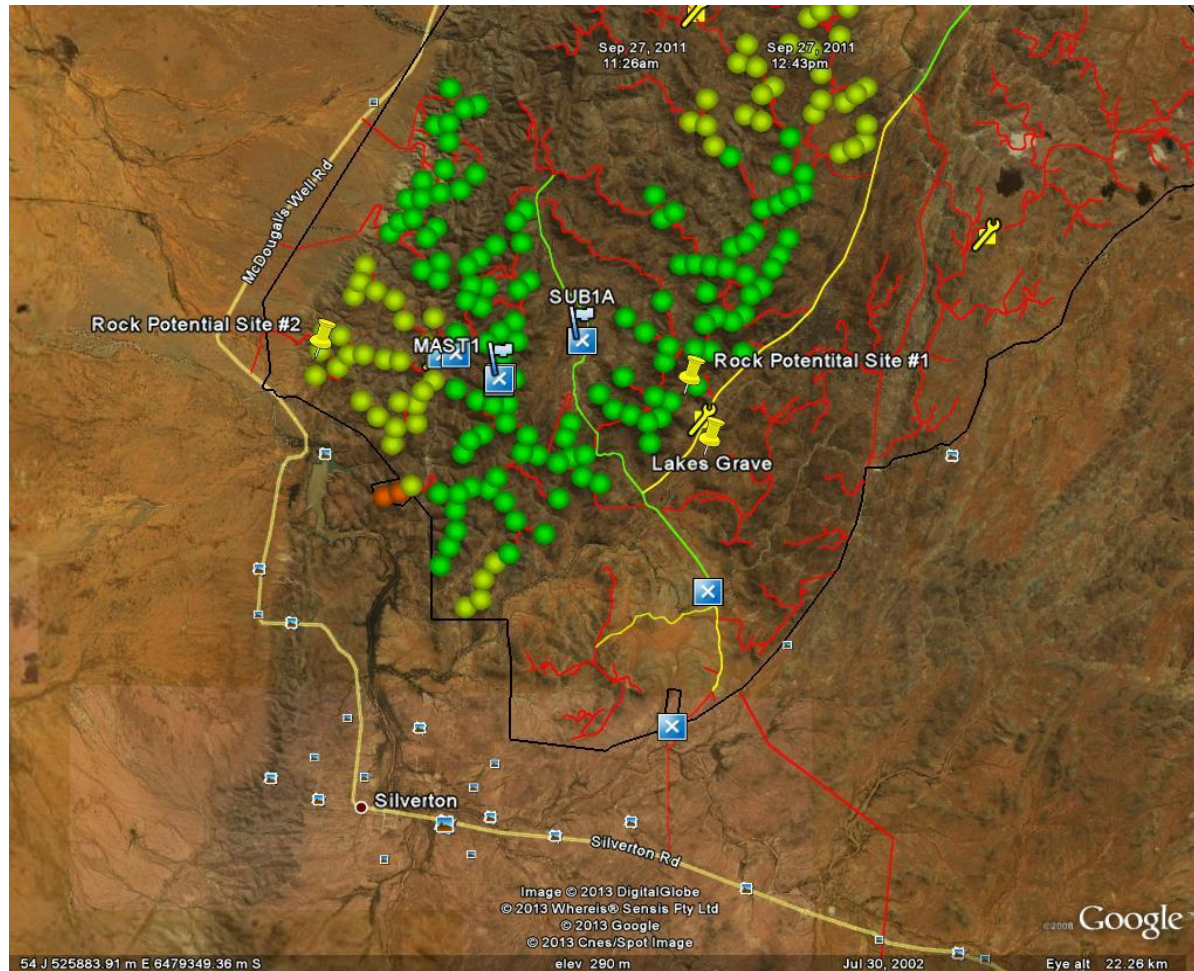
- > Overview of meeting agenda
- > Confirmation of February meeting notes

# Project Update – sourcing sand and rock locally

- > ngh Environmental engaged to assist with seeking approval to source sand and rock locally
- > Environmental Management & Rehabilitation Plan (EM&R Plan) is required for rock extraction sites
- > Environmental Assessment (EA) is required for sand extraction from the Mundi Mundi Creek
- > Approvals is expected to take 6 – 9 months.



# Potential rock site locations



# Economic Benefits – AGL's other wind farms

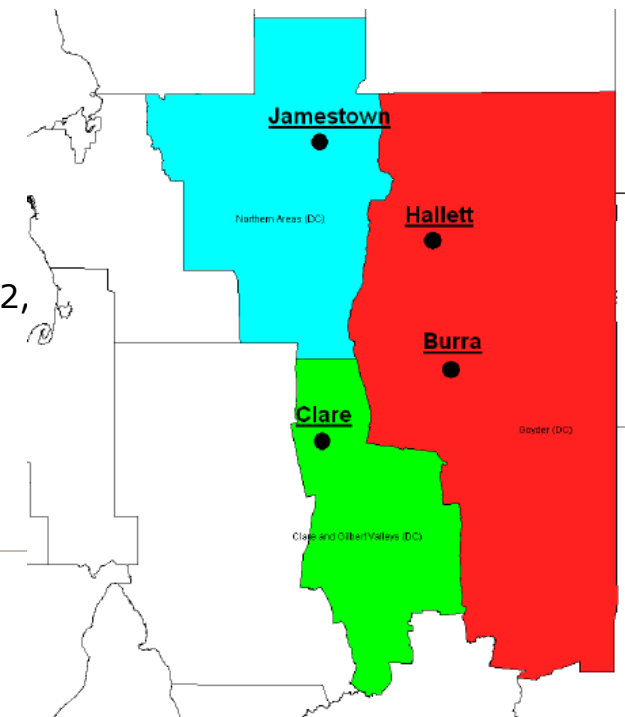
Sinclair Knight Merz (SKM) undertook an Economic Impact Assessment into the benefits some of AGL's wind farms had on the economy in the region

Data collected through questionnaires and review of expenditure data



# Hallett Wind Farms

Wind Farm	Turbines	Capacity (MW)	Status at time of report (June 2010)	Current status
Hallett 1	45	95	Operational	Operational
Hallett 2	34	71	Operational	Operational
Hallett 3	33	69	Planned	Planned
Hallett 4	63	132	Under construction	Operational
Hallett 5	25	52.5	Under construction	Operational



\*\* All findings include up to completion of Hallett 1, 2,

# Oaklands Hill and Macarthur Wind Farms

Wind Farm	Turbines	Capacity (MW)	Status at time of report (November 2012)	Current status
Oaklands Hill	32	63MW	Operational for 6 months	Operational
Macarthur	140	420MW	Construction underway	Operational



# Project development and construction

	Project	Value in region	State	Australia
<b>Project development and construction expenditure</b>	Halletts (\$897M)	\$111 m	\$370 m	\$550 m
	Oaklands Hill (\$195M)	\$43 m	\$111 m	\$130 m
	Macarthur (\$1.01B)	\$203 m	\$512 m	\$618 m
<b>Gross Value Added</b>	Halletts	\$55 m	N/A	N/A
	Oaklands Hill	\$28 m	\$106 m	\$145 m
	Macarthur (at Sept 2012)	\$119 m	\$458 m	\$600 m

*Note: these values are estimates*

**Project development and construction expenditure** - the total amount spent on the direct development, construction and operations of the wind farms.

**Gross Value Added (GVA)** - as total factor income plus taxes and less subsidies on production. Total factor income is made up of compensation of employees, gross operating surplus and gross mixed income.



# Operations

	<b>Project</b>	<b>Value in region</b>
<b>Operations expenditure</b>	Halletts	\$12.5m (annually)
	Oaklands Hill	\$2.5m (annually)
	Macarthur	N/A
<b>Gross Value Added</b>	Halletts	\$6.25 m (annually)
	Oaklands Hill	N/A
	Macarthur	N/A

*Note: these values are estimates*

# Employment

	Project	Region	State	Australia
<b>Direct employment</b>	Halletts	150 Jobs Development / construction 36 jobs - Operations	N/A	N/A
	Oaklands	95 jobs - Development/construction  4 jobs - Operations	153 jobs Development/construction  9 jobs - Operations	177 jobs Development/construction  9 jobs - Operations
	Macarthur	478 jobs (Development/construction)  17 jobs (Operations)	595 jobs (Development and construction)  28 jobs (Operations)	644 jobs (Development and construction)  30 jobs(Operations)
<b>Indirect and induced employment</b>	Halletts	N/A	N/A	N/A
	Oaklands	61 jobs (Development/construction)  7 jobs - Operations	364 jobs Development/construction  23 jobs - Operations	423 jobs Development/ Construction  26 jobs - Operations
	Macarthur	241 jobs (Development and Construction)  24 jobs (Operations)	1379 jobs (Development and construction)  75 jobs (Operations)	1539 jobs (Development and Construction)  85 jobs (Operations)

*Note: these values are estimates*

# How AGL can best engage with local businesses?

Discussion

# Next meeting and close

- > What topics do we want to discuss in the future meetings?
- > Next meeting – Thursday 23 May 2013

