

Silverton Wind Farm

Community Consultative
Committee

Thursday 28 April 2016

Energy in
action.®

Since 1837

AGL



Agenda.

1. Welcome

Confirmation of February meeting minutes

Review previous meeting actions

2. Project status update

3. CCC membership review

4. Other business

5. Next meeting and close



1. Review previous meeting actions.

	Action item	CCC Meeting	Status	Who
1	On behalf of CCC members, to remind media representatives about the protocols for interviewing and quoting CCC members when speaking to the media	October 2013	Ongoing	KE
5	AGL to send out hardcopies of the TMP when it becomes available (currently still in draft format)	February 2014	Open	HO
6	Provide information on indigenous heritage survey work on the wind farm	February 2014	Open	AGM
7	EPC tender submissions indigenous employment plans	October 2014	Open	AGM
8	Draft letter from the CCC about the project and turbine setbacks to the Director General and the Minister for Planning	July 2015	Open	KE
9	Provide information on Environmental Assessment and silt and erosion control	February 2016	Open	AGM
10	Send group Macarthur Wind Farm infrasound monitoring report	February 2016	Closed	HO

1. Review previous meeting actions.

	Action item	CCC Meeting	Status	Who
11	Send group link to Silverton Wind Farm Social Impact Statement document	February 2016	Closed	HO
12	Add CCC membership renewals to next meeting's agenda	February 2016	Closed	HO
13	Provide information on public consultation availability of Modification Request 2	February 2016	Closed	HO

2. Project status update.

Silverton Wind Farm

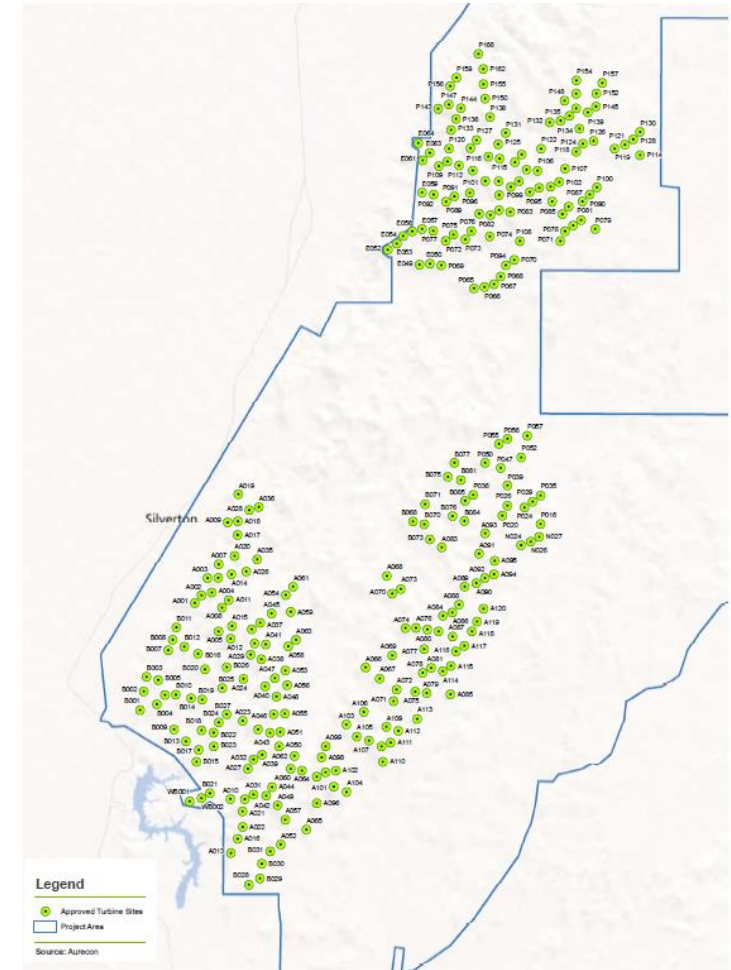
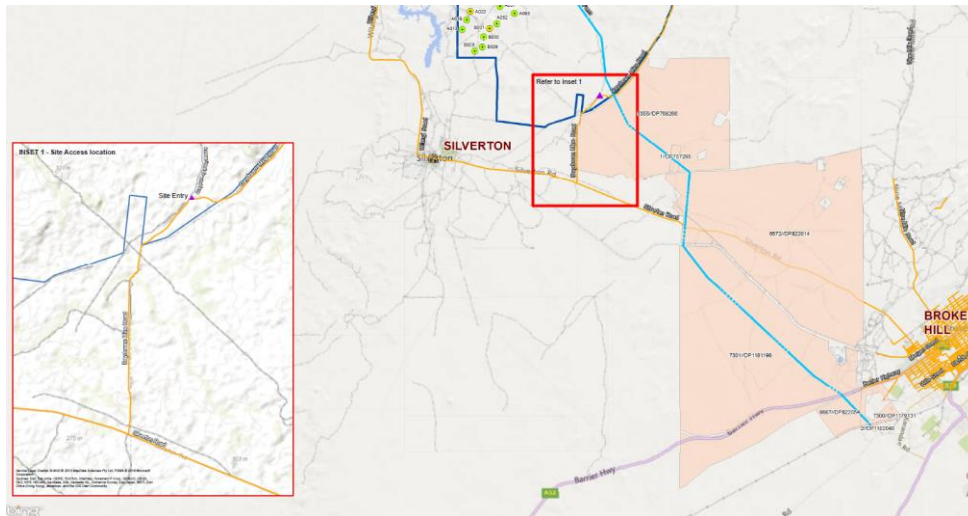
- › Location: Barrier Ranges approximately 5km north of Silverton
- › Capacity: up to 200 MW
- › Generation: approximately 700 GWh
 - » powering more than 120,000 average NSW homes
- › Connection: 220 kV TransGrid substation, Broken Hill
- › Wind turbines: 3.X MW*
 - » *based on current technology



2. Project status update.

Silverton Wind Farm

- Project Approval includes the construction and operation of 282 WTGs
- Connection involves the construction of 220 kV transmission line (>24km)



2. Project status update.

- > AGL remains committed to the Silverton Wind Farm
 - » 25 February 2016 → Community Consultative Committee
- > Hydrogeological assessment → March 2016
 - » Project Approval condition 2.64 – groundwater interception
- > Invitation to Tender (ITT) issued to shortlist
 - » Indigenous engagement and local industry participation plan
- > Tenderer site inspections → Apr 2016
- > Application to connect → TransGrid (recommenced)



2. Project status update.

Construction Water

- › Umberumberka reservoir is currently empty and heavily sedimented.
 - » Photos showing reservoir previously full and the current situation
 - » We are currently progressing planning with Essential Water
 - » Require ~45 ML/pa



2. Project status update.

Sediment / Erosion Control Plan

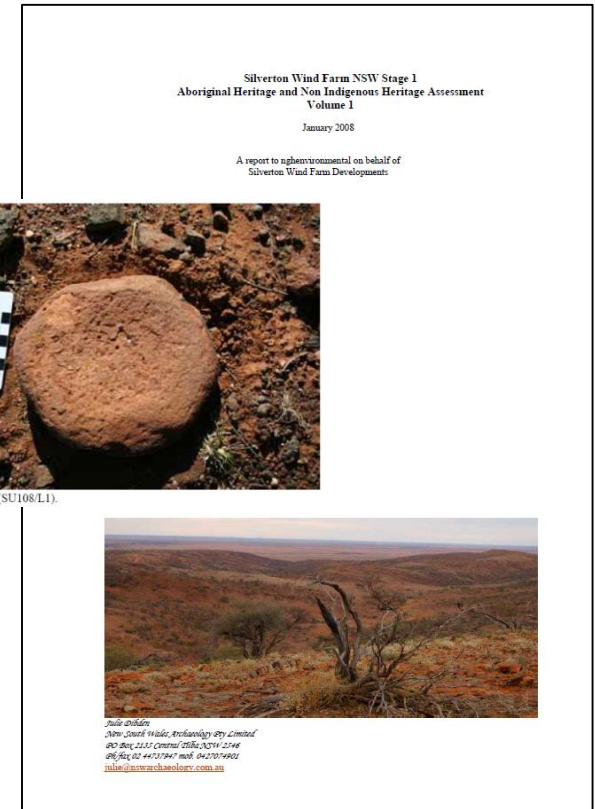
- › Environmental Assessment and Statement of Commitment (SOC58) requires the establishment of a Sediment / Erosion Control Plan to minimise deterioration of water quality
 - » Establish soil and water management practices guided by the best practice guidelines contained within Soils and Construction Vol. 1 (Landcom 2004)
- › Forms part of the Water Management Plan that is part of the Construction Environmental Management Plan (CEMP) – requires approval from NSW Office of Water and Director General



2. Project status update.

Indigenous Heritage

- > Environmental Assessment (Appendix 6)
 - » New South Wales Archaeology Pty Ltd undertook an Indigenous and Non Indigenous heritage assessment of the proposed Silverton Wind Farm.
 - » The field survey and assessment was undertaken in partnership with the Broken Hill Local Aboriginal Land Council (BHLALC).
- > Project Approval conditions 2.43-45 address the requirements for indigenous heritage
 - » Cultural Heritage Management Protocol



2. Project status update.

Modification 2 – Project Extension

- › AGL submitted Modification 2 to the Department of Planning and Environment (DPE) on 25 February 2016.
 - » Exhibited from 4-18 March 2016 (extended to Easter).
 - » Final submissions report issued to DPE on 14 Apr 2016.

Modification 3 – Project Approval Amendment

- › Wind turbine technology improvement
- › Visual impact assessment
- › Background noise
- › Construction water

3. CCC membership review.

- › Current Terms Of Reference (TOR) formed in 2012 in consultation with community
- › Membership for duration of development and construction
- › TOR included review of effectiveness of CCC every 12 months

3. CCC membership review. Current members.

Cynthia Langford	Pastoralist / turbine host	John Taplin	Silverton Village Committee
Naomi Schmidt	Pastoralist / turbine host	Peter Price	Silverton Village Committee / Silverton Pub
Phil Blore	Pastoralist / turbine host	Albert Woodroffe	Silverton Village Committee
TBC	Broken Hill Chamber of Commerce	Kevin White	DayDream Mine
TBC	Crown Lands		
Clr Marion Brown	Broken Hill Council	Helen Murray	resident
Rodney Grenfell	Umberumberka Reservoir	Cameron Koch	Silver City Minerals
		Steve Radford	Consolidated Mining and Civil
Helena Orel	AGL Energy Ltd (proponent)	Adam Mackett	AGL Energy Ltd (proponent)

5. Other business.

- › Broken Hill Solar Plant Community Open Day – Sunday 22 May 2016
- › Questions from group and observers?



6. Next meeting and close.

- > Next meeting:
 - > Date
 - > Time
 - > Location

