

# Silverton Wind Farm

Community Consultative  
Committee

Thursday,  
20 October 2016

Energy in  
action.®

Since 1837

AGL



# Agenda

## 1. Welcome

Confirmation of July meeting minutes

Review previous meeting actions

## 2. Project update

## 3. CCC group visit wind farm site

## 4. Modification 3 Submissions Report

## 5. Topics of interest

## 6. Other business

## 7. Next meeting and close



# 1. Review previous meeting actions

	Action item	CCC Meeting	Status	Who
1	On behalf of CCC members, to remind media representatives about the protocols for interviewing and quoting CCC members when speaking to the media	October 2013	Ongoing	KE
2	AGL to send out copies of the TMP (currently still in draft format)	February 2014	Open	HO
3	Draft letter from the CCC about the project and turbine setbacks to the Director General and the Minister for Planning	July 2015	Open	KE
4	AGL to advise the CCC when Modification 3 goes on public exhibition	April 2016	Closed	HO
5	Include the CCC membership discussion with minutes and CCC members attending meetings infrequently to be contacted	April 2015	Closed	HO
6	AGL to investigate possible field trip for the CCC group to view Silverton from the turbine site itself	April 2016	Open	HO

# 1. Review previous meeting actions

	Action item	CCC Meeting	Status	Who
7	AGL to liaise with Silverton Village Committee regarding use of the empty butcher shop	April 2016	Closed	HO
8	AGL to confirm next meeting date with CCC group and interested community members	April 2016	Closed	HO

## 2. Project description

### Silverton Wind Farm

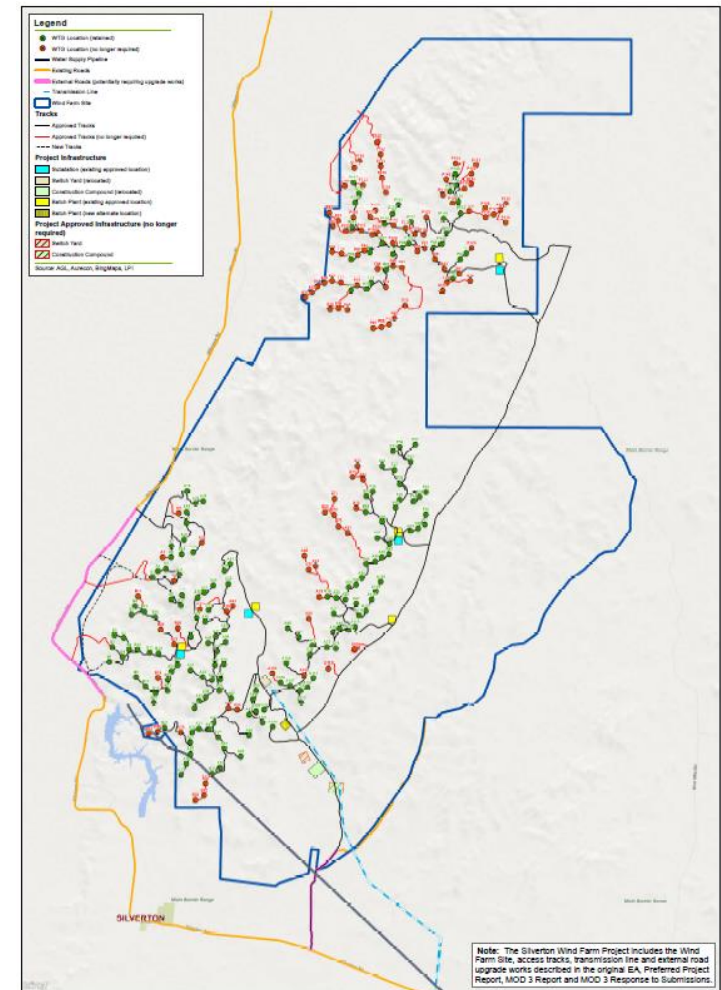
- > Location: Barrier Ranges approximately 5 km north of Silverton
- > Capacity: up to 200 MW
- > Generation: approximately 700 GWh
  - » powering more than 120,000 average NSW homes
- > Connection: 220 kV TransGrid substation, Broken Hill and ~25km of 220 kV transmission line
- > Wind turbines: ~60 x 3.X MW (southern)



## 2. Project description

### Modification 3 Key Features

- Advancement in wind turbine technology
- Decrease in the number of wind turbines from 282 to maximum of 172
- Increase in wind turbine dimensions
- Surrender of concept approval
  - » Certainty to community
- Presented to CCC on 28 July 2016 following review by the Department of Planning and Environment in late July 2016
- *Currently being assessed by the Department*



## 2. Project status update

- > Contract negotiations with two shortlisted tenders
  - » Commenced in late July 2016
  - » Preferred tenderer has been selected
  - » Contract finalisation is progressing
- > Modification 3 (Project Approval Amendment) Submissions Report has been issued to Planning for assessment.
- > Connection Investigation & Negotiation Agreement (CINA) with TransGrid is progressing
  - » Project Agreement (construction)
  - » Generator Connection Agreement (operations)



## 2. Project status update

### Modification 3 Exhibition

- > Exhibition period for Modification 3 was from 5-28 August 2016
  - » Submissions were accepted until 9 Sept 2016
- > Community drop in sessions were held at Silverton and Broken Hill on 17 August 2016
  - » 5 people visited the Silverton session and 15 people visited the Broken Hill session
- > Overall people were interested in economic and community benefits and visual aspects

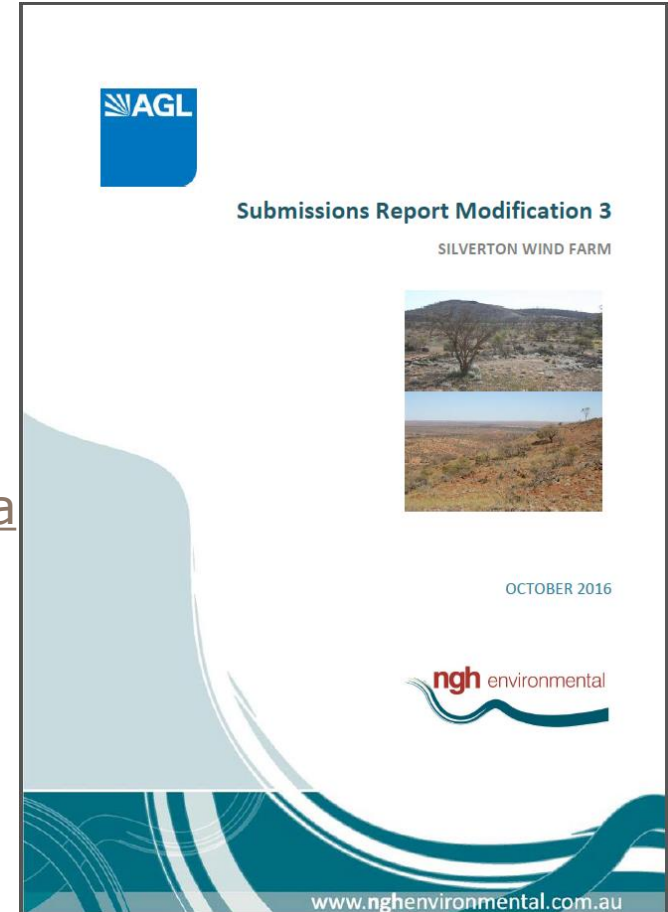




## 2. Project status update

### Modification 3 Submissions Report

- › Twelve submissions were received during the exhibition period: Nine from government departments and 3 from the community
- › Submissions Report has been finalised and is available on Planning's website
  - › [http://www.majorprojects.planning.nsw.gov.au/index.pl?action=view\\_job&job\\_id=7834](http://www.majorprojects.planning.nsw.gov.au/index.pl?action=view_job&job_id=7834)
  - › Copies are also available for distribution following the meeting
- › Main issues raised included: Landscape and visual impact, aviation and noise



# 3. CCC Group Site visit

## Site visit – 20 Oct 2016

- › CCC and community members involved with the project requested site visit to inspect location of the wind turbine
  - » Visited the location of A16 and viewed the location of A13 (bottom ridge) and A22 (Blue Anchor water tank)
  - » A13 is close to the Silverton township



# 3. CCC Group Site visit

## Site visit – 20 Oct 2016

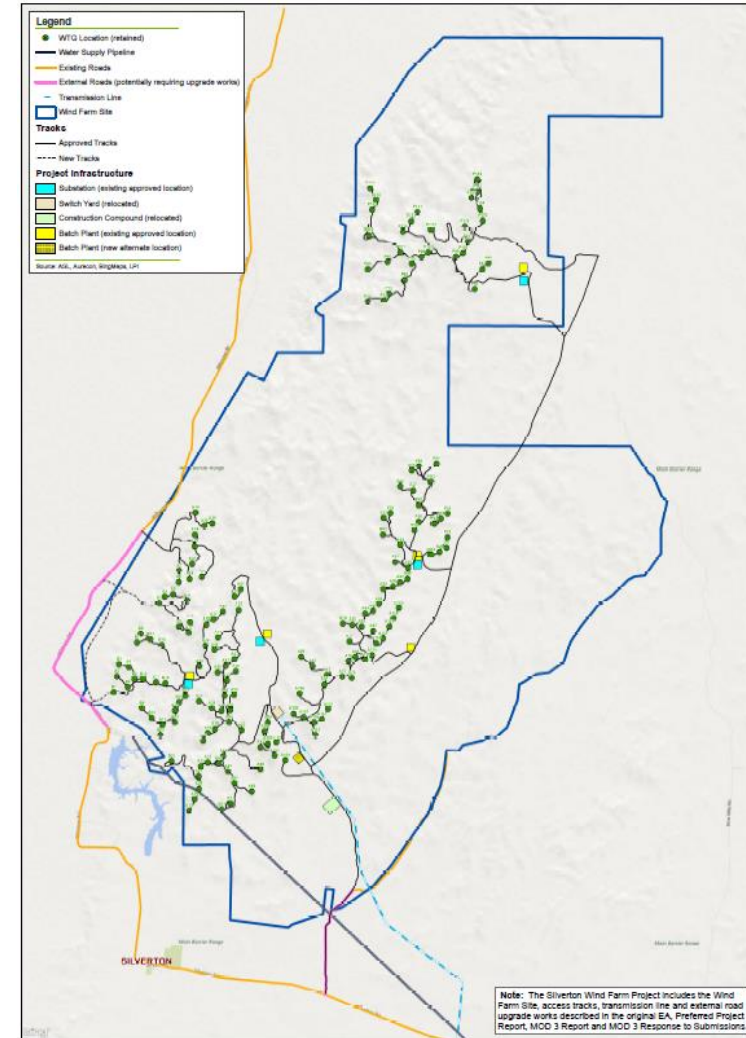
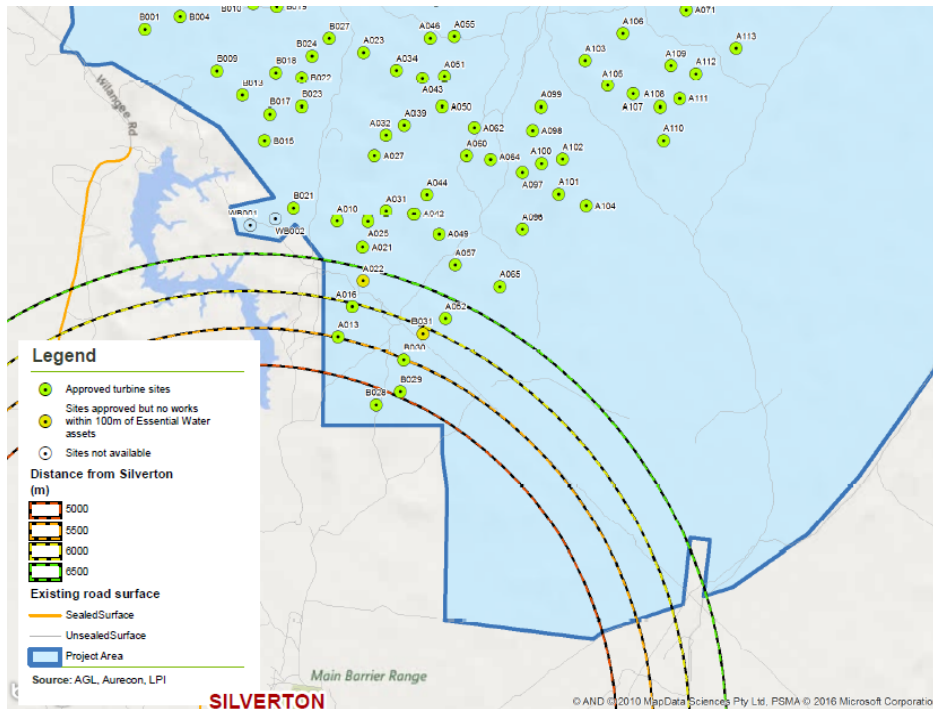
- AGL will separately be arranging another site visit with other Silverton community members, Broken Hill City Council and interest media representatives



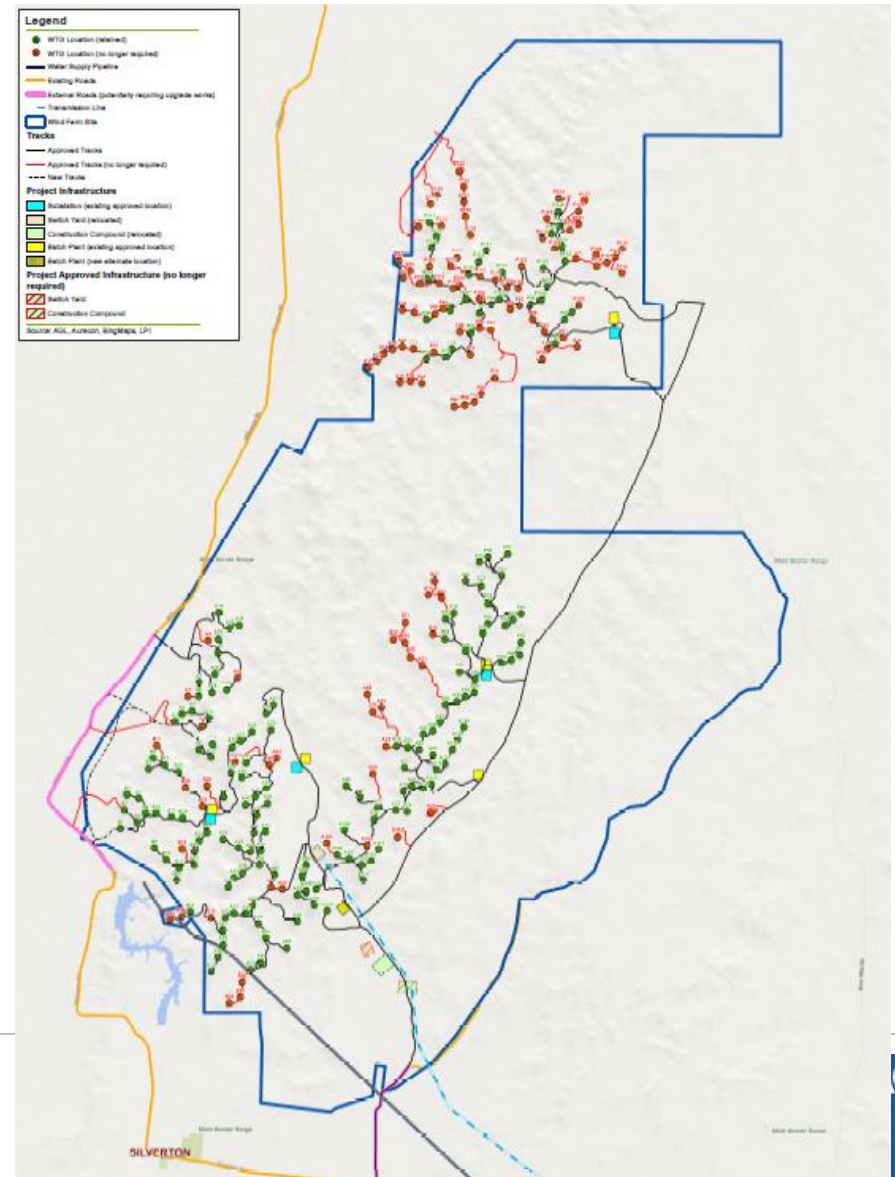
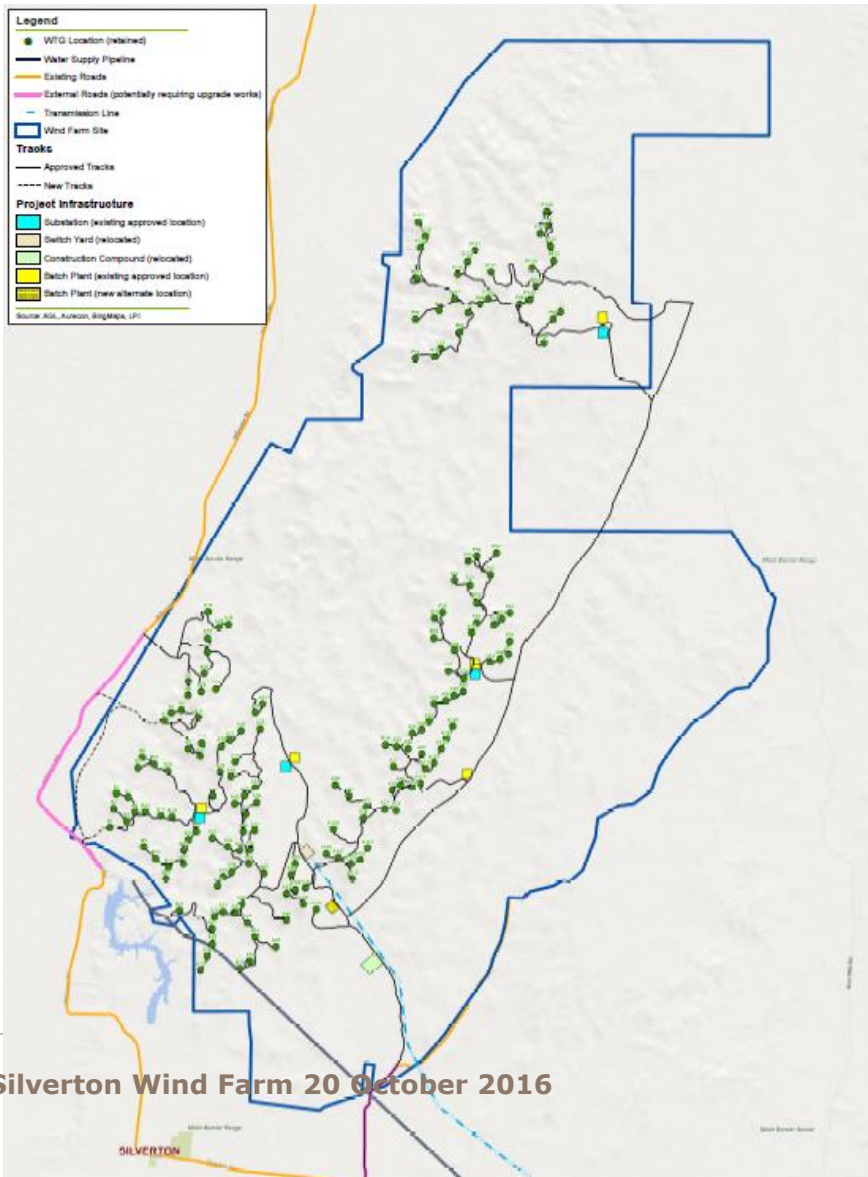
# 4. Modification 3 Submissions Report

## Wind farm layout

- Turbines B028, B029 and B030 have been deleted. Closest turbine now about 5.5 km



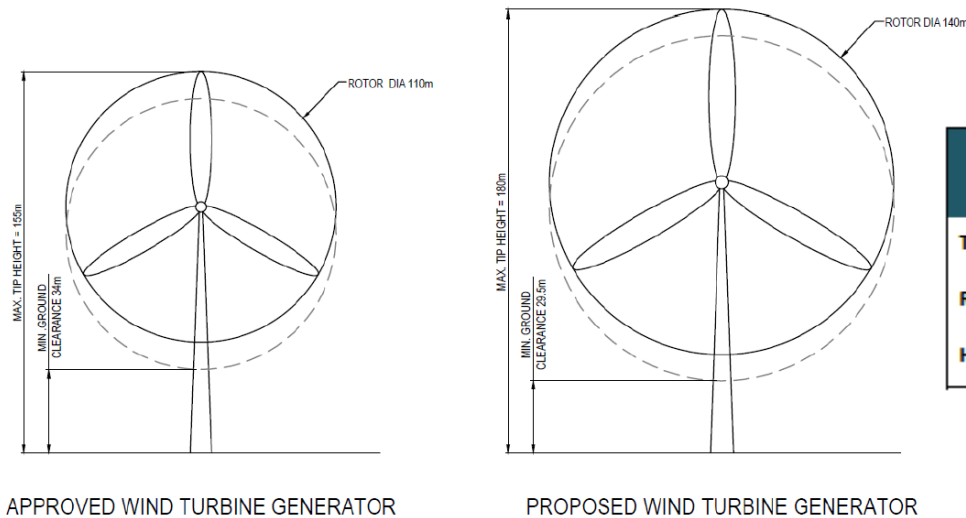
# 4. Modification 3 Submissions Report



# 4. Modification 3 Submissions Report

## Wind Turbine dimensions

- > Modification 3 takes advantage of advances in wind turbine technology since the project was first approved in 2009.
  - » Increase in dimensions and reduction in number

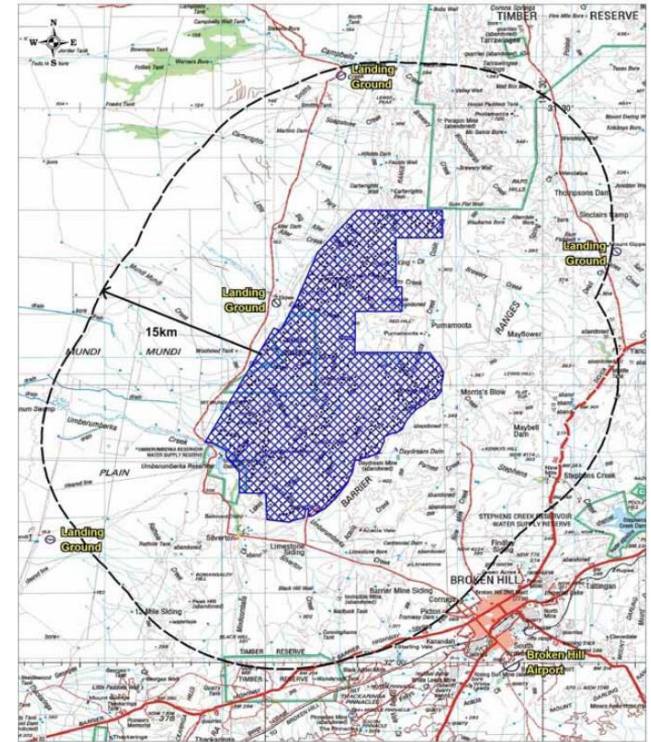


	Approved Turbine from Environmental Assessment 2008	Proposed Turbine in Modification 3 2016
<b>Tip height</b>	Maximum 155m	Maximum 180m
<b>Rotor diameter</b>	Maximum 110m	Nominal 140m.
<b>Hub height</b>	Maximum 100m	Nominal 110m <sup>3</sup>

# 4. Modification 3 Submissions Report

## Aviation Impact Assessment

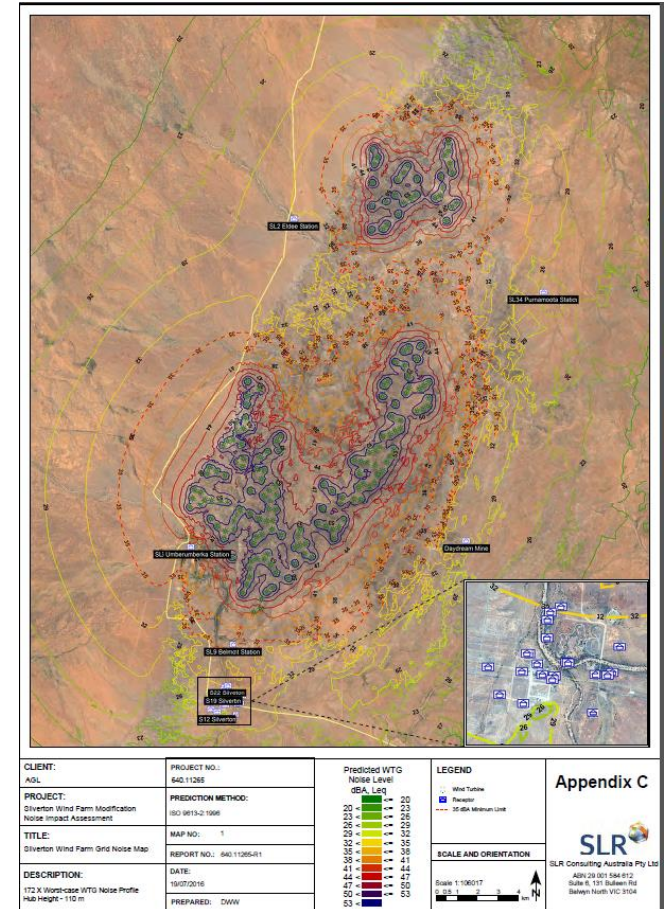
- Aircraft hazard impacts was considered in section 7.13 of the initial Environmental Assessment
- Clarification provided in Submissions Report
- Lowest safe altitude (LSALT) needs to be progressed with Broken Hill Airport and AirServices
- Aviation risk remains low



# 4. Modification 3 Submissions Report

## Noise Impact Assessment

- Noise assessment was undertaken using wind turbines that were proposed during the tender process
  - » The largest generator capacity is 3.6 MW
- The worst case noise profile and spectrum approach adopted in the report provides for a conservatively high noise level prediction that would likely provide sufficient margin to cater for even larger wind turbines.
- Condition 2.21 of the Project Approval requires a revised noise assessment based on the final selected wind turbine model.





# 5. Topics of interest

## Draft Traffic Management Plan

- › Preliminary plan dated June 2014
- › Site access is off the Daydream Mine Road
- › Construction will involve the delivery of components which are oversized and/or overmass → Restricted Access Vehicles (RAV) will require special operating permits
  - » Overmass is > 49.5 tonne
  - » Oversize is > 25m long, 3.5m wide and 4.6m high
- › Silverton Road (@ 200 vpd) operates at a level of service of "A" and would require 1800 vpd for B



# 5. Topics of interest

## Draft Traffic Management Plan

- > Community comments on RAVs
  - » Avoid school times / buses
  - » stock trucks and shearing season (July?)
  - » School holidays are critical periods (Easter, Jul, Sept) and long weekends. St Patrick's Day races
  - » Daydream Mine visitor times
- > Platooning is used to minimise traffic impacts
- > Use of lay-bys on the Silverton Road to minimise potential delay.
- > Contractor to develop final Traffic Management Plan



# 5. Topics of interest

## Construction Water

- › Umberumberka reservoir has recently received inflows following rain events.
  - » Photos showing reservoir previously full and the empty earlier this year.
  - » Water restrictions eased from Level 3 to Level 1 on 29 August 2016
  - » We are currently progressing planning with Essential Water for 100 ML



## 5. Topics of interest

### The Living Desert Sculptures

- Proposed 220 kV transmission line is over 9 km from the Desert Sculptures.
- Wind farm is approximately 18-20 km from the Desert Sculptures – behind the ridgeline.
- Broken Hill Solar Plant transmission line (~9 km away) can be identified in the background near the solar plant, consequently, the proposed 220 kV transmission line may be visible for the Desert Sculptures.
- Bottom image shown the view of Broken Hill from the Desert Sculptures.



# 5. Topics of interest

## Horses and Wind Farms

- > Delabole Wind Farm is the UK's first commercial wind farm, established in 1991.
- > A horse stud farm and riding centre has been operating at the Delabole Wind Farm since 1991
- > Originally the wind farm consisted of 10 turbines, a few years ago these were replaced with four new technology turbines which also increased the generation capacity output of the wind farm.
- > *AGL is endeavouring to obtain more information on the type of horse stud farm*



# 5. Topics of interest

## Visual Impact Assessment

- › Subject to final investment decision – prepare photomontages
  - » Silverton township, Mundi Mundi lookout, Umberumberka House, Desert Sculpture.



## 5. Topics of interest

### Industry briefing update

- › Local industry participation plan included as part of the construction tender requirements
- › In conjunction with Industry Capability Network (ICN) and Broken Hill Chamber of Commerce, business information sessions planned for industry to learn more about participating in the construction process
- › ICN creates opportunities for NSW by bridging the information gap between buyers and sellers, advise on supply chain development and local industry capability and capacity
- › AGL will advise of future industry briefing following final investment decision.



## 6. Other business

- > Questions from group and observers?





# 7. Next meeting and close

- > Next meeting:
  - » Date
  - » Time
  - » Location

