

# Silverton Wind Farm

Community Consultative  
Committee

Thursday,  
19 January 2017

Energy in  
action.®

Since 1837

AGL



# Agenda

## 1. Welcome

Confirmation of October meeting minutes

Review previous meeting actions

## 2. Project update

## 3. Community relations update

## 4. Topics of interest

## 5. Other business

## 6. Next meeting and close



# 1. Review previous meeting actions

	Action item	CCC Meeting	Status	Who
1	On behalf of CCC members, to remind media representatives about the protocols for interviewing and quoting CCC members when speaking to the media	October 2013	Ongoing	KE
2	AGL to send out copies of the TMP (currently still in draft format). Draft copies provided in hard copy at CCC meeting 20 October 2016.	February 2014	Closed	KL
3	Draft letter from the CCC about the project and turbine setbacks to the Director General and the Minister for Planning	July 2015	Open	KE
4	AGL to publish submissions report on the AGL website.	October 2016	Closed	KL
5	Rod to investigate the reason for the Blue Anchor tank name.	October 2016	Open	RG
6	AGL to liaise with interested people to participate in site tours.	October 2016	Ongoing	KL
7	AGL to investigate sand mining schedule to manage timing with construction works.	October 2016	Open	AGL
8	AGL to circulate map for where photos could be taken.	October 2016	Open	AGL

## 2. Project update

4

### ASX and Media Release

- Powering Australian Renewables Fund (PARF) achieves financial close of Silverton Wind Farm.
- “Reaching financial close on the Silverton wind farm is a major milestone for PARF”.
- “Building more renewables is a key commitment of our Greenhouse Gas Policy”.
- AGL issued a community notification this morning following confirmation that the ASX release had cleared in the system.
  - » AGL update - AGL Silverton Wind Farm set to proceed to construction

AGL Energy Limited  
ABN: 74 115 061 375

Locked Reg 1837  
St Leonards NSW 2065  
AUSTRALIA

Level 24, 200 George St  
Sydney, NSW, 2000  
AUSTRALIA

T: +61 2 9921 2999  
F: +61 2 9921 2552  
[www.agl.com.au](http://www.agl.com.au)

Energy in action®

ASX & Media Release

**Powering Australian Renewables Fund achieves financial close of Silverton Wind Farm**

19 January 2017

AGL Energy Limited (AGL) today announced that it has reached financial close on the sale of the 200 MW Silverton wind farm project in western New South Wales, to the Powering Australian Renewables Fund (PARF), a partnership between AGL, QIC and Future Fund for the development of approximately 1,000 MW of large-scale renewable energy projects.

The \$36 million sale includes AGL writing an offtake agreement with the Silverton wind farm. AGL expects to recognise approximately nil profit on sale from the transaction.

The lenders to Silverton Wind Farm are: Westpac Banking Corporation, National Australia Bank, Sumitomo Mitsui Banking Corporation, Mitsubishi UFJ Financial Group, Societe Generale and DBS Bank.

The acquisition includes AGL writing an offtake agreement with Silverton Wind Farm. AGL's bundled offtake price from Silverton Wind Farm will be \$65/MWh (real) for an initial five year period. There is a put/call option to extend for the following five years at the same or lower price.

AGL Managing Director & CEO, Andy Vesey, said: "Building more renewables is a key commitment of our Greenhouse Gas Policy. Today's announcement and our broader strategy of setting up the PARF to enable investment is a tangible demonstration of this.

"Reaching financial close on the Silverton wind farm is a major milestone for PARF. Silverton is the first new renewable project build offered to the Fund, following the sale of AGL's already developed solar plants at Nyngan and Broken Hill in November 2016.

"The momentum we're experiencing with PARF is pleasing and proves that investor support exists for large-scale renewables development. However, further comprehensive policy changes are required to facilitate Australia's transition to a low-carbon economy," said Mr Vesey.

AGL Chief Financial Officer, Brett Redman, said: "The sale of Silverton reinforces our belief that the PARF, while innovative, is also a very workable financing vehicle, which enables the competitive funding of new renewable projects. We've seen strong lender support for the PARF projects to date, which has resulted in a competitive cost of funds."

Ross Israel, Head of Global Infrastructure at QIC, said: "This is a significant milestone for PARF in the delivery of its project pipeline. It demonstrates our ability to structure a strong, long-term relationship with our strategic partner AGL and our managed client, Future Fund. We are very pleased that in the first six months of establishing PARF there are three major investments in the partnership, including the first greenfield project."

On behalf of PARF, AGL will develop and manage approximately 1,000 MW of large-scale renewable energy infrastructure assets and projects. This represents 20 percent of the estimated 5,000 MW of new renewable generation capacity required by 2020 to meet the Federal Government's Renewable Energy Target (RET).

<sup>1</sup> EY Renewable energy country attractiveness Index, May 2016 Issue 47, p17

1

## 2. Project update

### Silverton Wind Farm

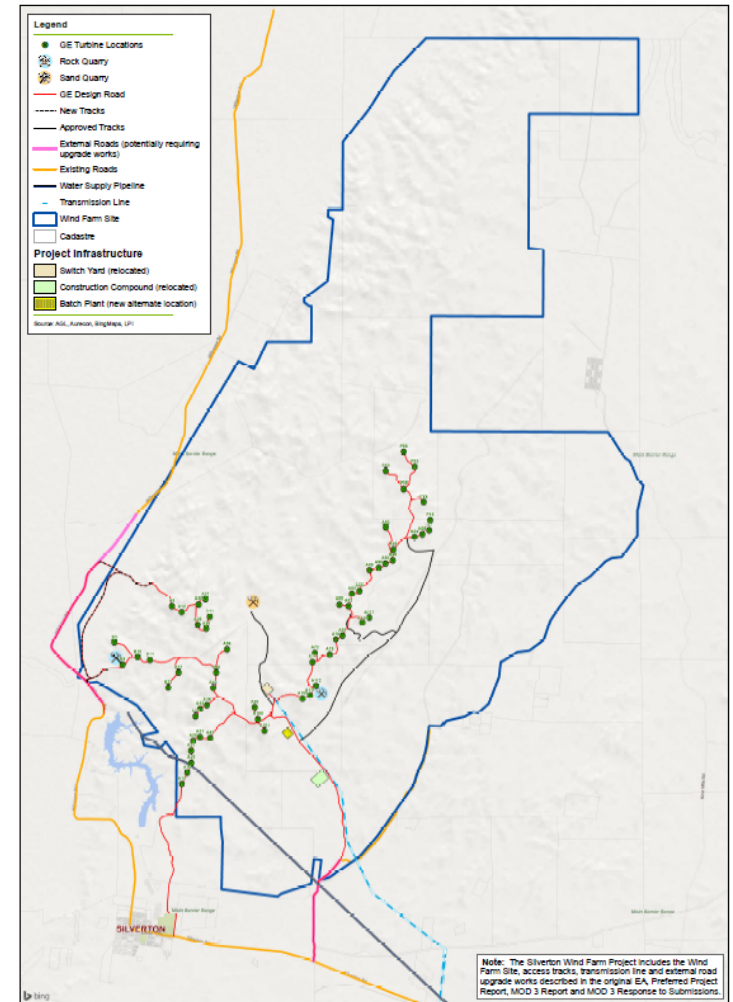
- › Location: Barrier Ranges approximately 5 km north of Silverton
- › Capacity: 200 MW
- › Wind turbines: 58 x GE 3.43-130
- › Generation: ~780,000 MWh (c.f 44.5%)
  - » powering more than 137,000 average Australian homes
- › Connection: 220 kV TransGrid substation, Broken Hill and ~25km of 220 kV transmission line



## 2. Project update

### Wind farm layout

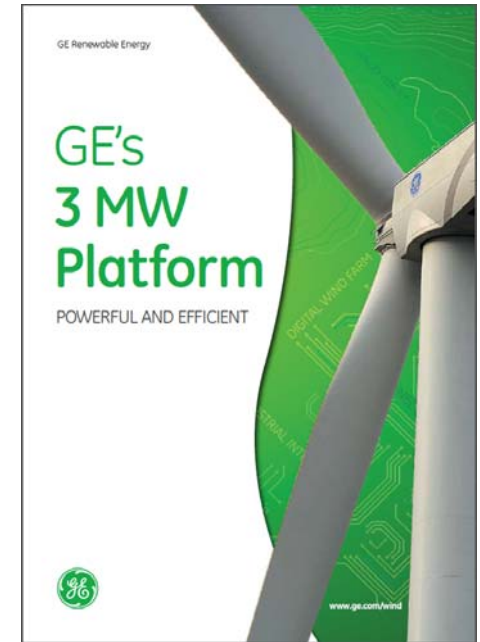
- › General Electric (GE) wind turbines
  - » 58 x GE 3.43-130
- › Based on the Modification 3 layout approved by the Planning and Assessment Commission (PAC) on Thursday, 22 December 2016
- › Layout uses the southern region of the approved wind turbines and is focused on the NE-SW ridge to take advantage of the predominate winds from the SE
- › Wind farm will have a capacity factor of ~44.5%



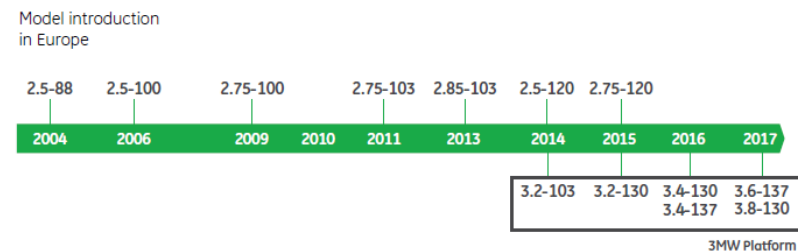
## 2. Project update

### Wind turbine GE 3.43-130

- › Nameplate of 3.43 MW with a 130m rotor and hub height of 110m.
- › Modification 3 allowed for the advancement in wind turbine technology.
- › The GE 3.4-130 has up to 30% higher Annual Energy Production (AEP), compared to its predecessor the 3.2-103.
- › The 3MW platform machines are an evolution of the 2.5MW turbine, developed in 2004.



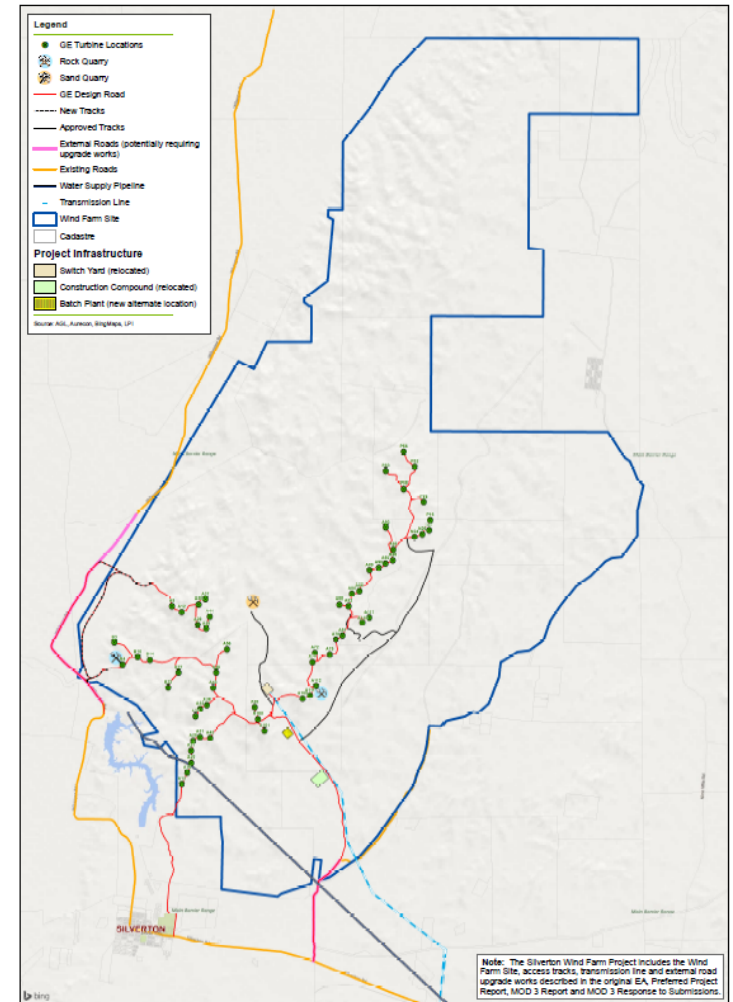
### Building Upon Proven Technology



## 2. Project update

### Wind Farm Works

- › GE-CATCON (joint venture) has been engaged to deliver the wind farm
  - » Engineer, Procure and Construct (EPC) Contract
- › Scope of works, includes:
  - » 58 x GE 3.43-130 wind turbines
  - » 33kV electrical reticulation (underground and overhead) and 33kV switchroom
  - » Roads and O&M buildings
- › Site mobilisation is planned for March 2017

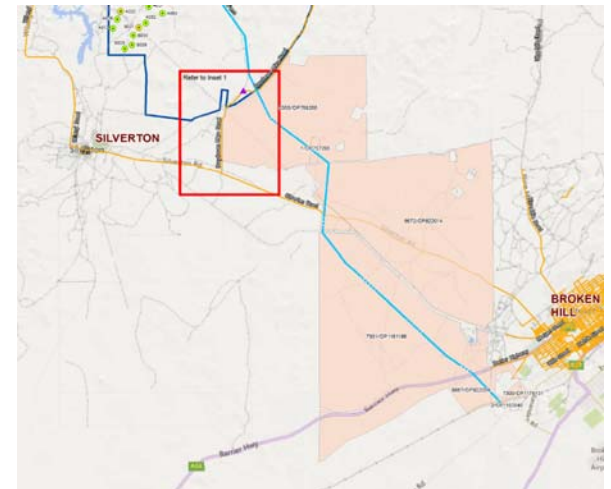




## 2. Project update

### Connection Works

- › TransGrid (Network Services Provider) has been engaged to deliver the connection works for the wind farm
  - » Project Agreement (construction)
- › Scope of works, includes:
  - » Wind farm 220kV substation
  - » ~25km of 220kV transmission line
  - » New circuit breaker in TransGrid's existing 220kV Broken Hill substation





## 2. Project update

### Community Enhancement Commitments

- › Silverton Community Fund
  - » \$15,000 per year + CPI (life of project)
- › Solar Silverton Program
  - » 5kW solar PV for leaseholder and residences within 10 km.
- › Water Tank Program
- › Mobile Reception Program
  - » Contribute up to \$50,000 for mobile reception improvement works



### 3. Community relations update

#### Communications


- How would people like to be kept up-to-date?
- Please register your contact details
- Community office
- Engagement
- Complaints and Enquiries
- Consultation on community engagement plan



## 3. Community relations update

### Silverton Community Fund

- Governance
- Criteria
- Documentation
  - Guidelines
  - Application form
  - Evaluation
- Community Fund Advisory Panel



Broken Hill Solar Plant Community Fund  
Guidelines - Construction Stage

---

AGL Community Engagement:	Broken Hill Solar Plant Community Fund Guidelines	Version:	1.0
Approved by:	For approval by Project Manager, AGL Solar Plants	Effective date:	November 2014
Signed by:			

Broken Hill Solar Plant Community Fund Guidelines Page 1 of 7

## 3. Community relations updated

### Industry briefing

- › AGL together with GE-CATCON will be conducting an industry briefing on Tuesday, 31 January 2017 (time to be determined)
- › Contractor will be developing a local industry participation plan
- › Briefing is planned to be undertaken in conjunction with Industry Capability Network (ICN) and Broken Hill Chamber of Commerce
- › ICN creates opportunities for NSW by bridging the information gap between buyers and sellers, advise on supply chain development and local industry capability and capacity



## 4. Topics of interest

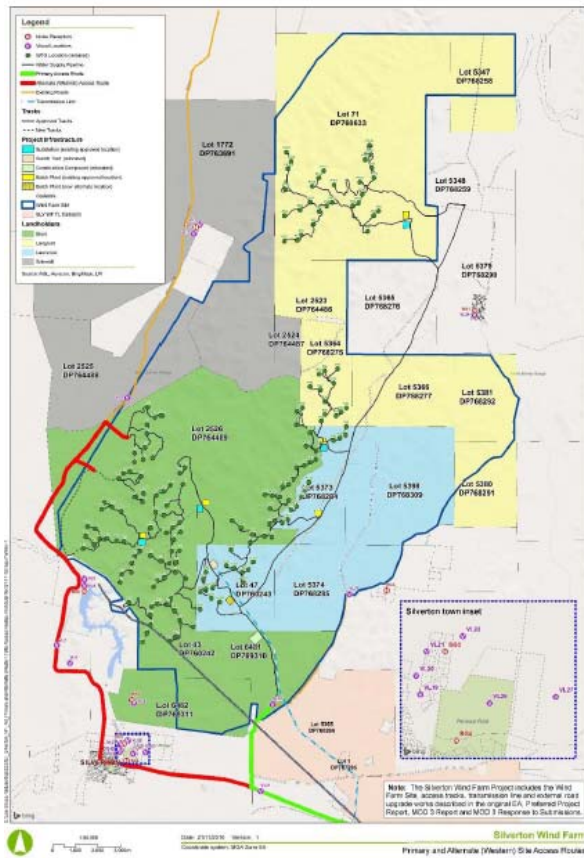
### Traffic Management Plan

- › Contractor to develop final Traffic Management Plan
- › Site access is off the Daydream Mine Road
- › Construction will involve the delivery of components which are oversized and/or overmass → Restricted Access Vehicles (RAV) will require special operating permits
  - » Overmass is > 49.5 tonne
  - » Oversize is > 25m long, 3.5m wide and 4.6m high
- › Silverton Road (@ 200 vpd) operates at a level of service of "A" and would require 1800 vpd for B



## 4. Topics of interest

### Heavy and over-dimensional vehicle routes





## 4. Topics of interest

### Construction water

- › Umberumberka reservoir
  - » Photos showing reservoir previously full and the empty earlier in 2016.
  - » Water restrictions eased from Level 3 to Level 1 on 29 August 2016
  - » We have approval from Essential Water for 100 ML



## 4. Topics of interest

### Horses and wind farms

- › Delabole Wind Farm is the UK's first commercial wind farm, established in 1991.
- › A horse stud farm and riding centre has been operating at the Delabole Wind Farm since 1991
- › Originally the wind farm consisted of 10 turbines, a few years ago these were replaced with four new technology turbines which also increased the generation capacity output of the wind farm.
- › *AGL is endeavouring to obtain more information on the type of horse stud farm*



## 4. Topics of interest

### Visual Impact Assessment

- › Subject to final investment decision – prepare photomontages
  - » Silverton township, Mundi Mundi lookout, Umberumberka House, Desert Sculpture.



Silverton Wind Farm 19 January 2017

## 5. Other business

- › AGL Viewing Platform Art and Design Competition (Broken Hill Solar Plant)
- › Questions from group and observers?



## 6. Next meeting and close

- › Next meeting:
  - » Date
  - » Time
  - » Location

