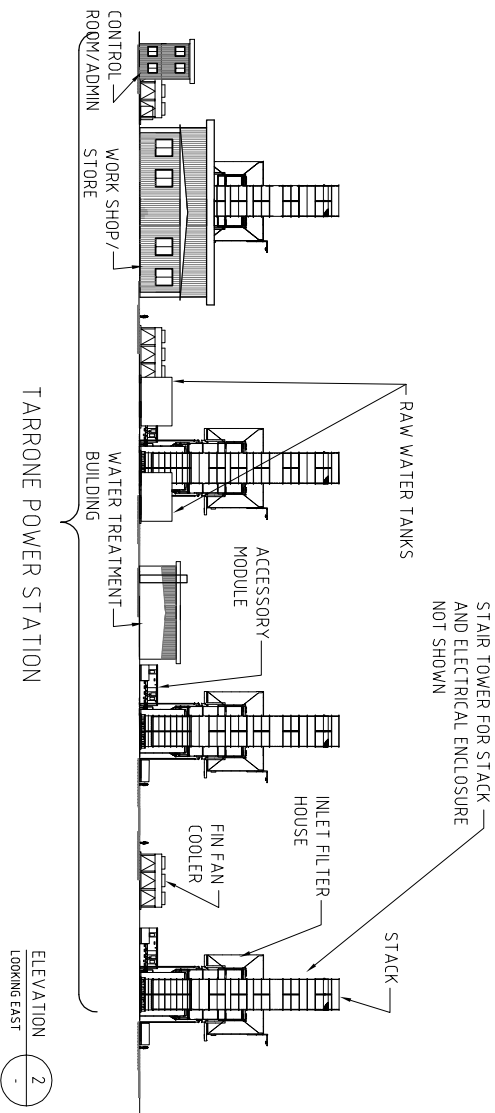
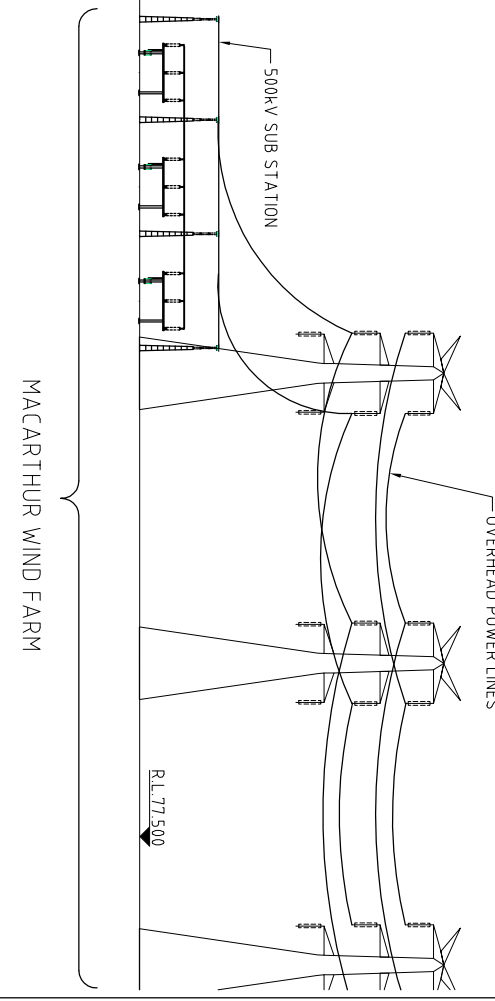


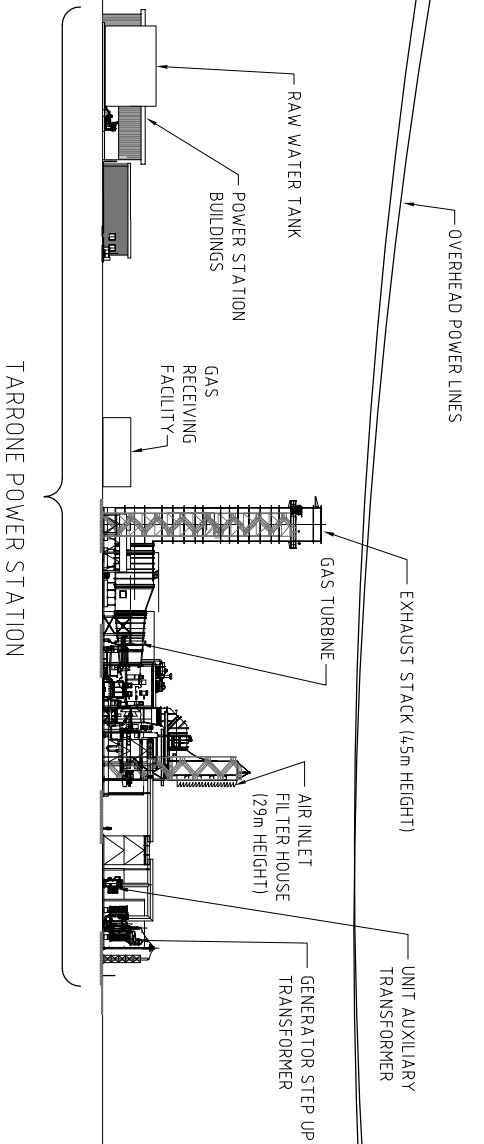
PLAN VIEW  
1:5000



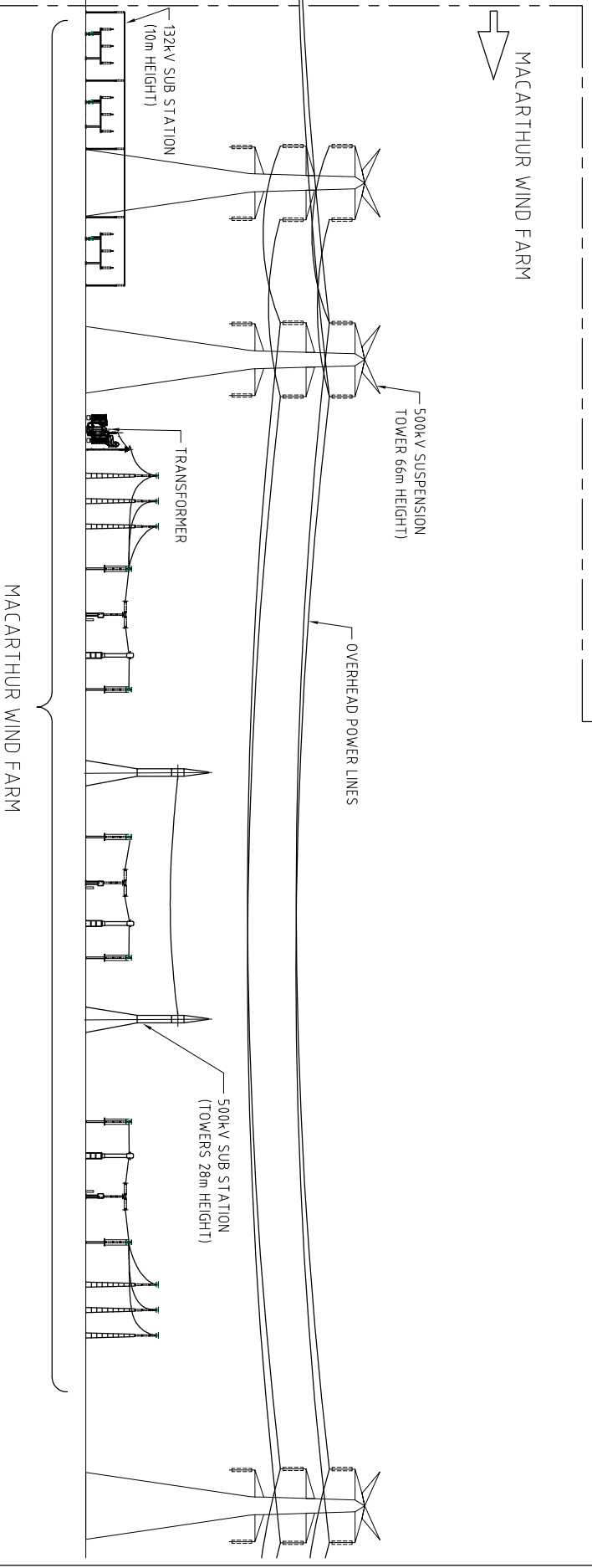
ELEVATION 1  
LOOKING NORTH



ELEVATION 2  
LOOKING EAST



TARRONE POWER STATION



MACARTHUR WIND FARM

ELEVATION 1  
LOOKING NORTH

ELEVATION 2  
LOOKING EAST

Rev.	Date	Revision Details	Drn	Ver.	App.
01	17-01-11	FIRST ISSUE	ID		

**aurecon**  
Aurecon Australia Pty Ltd ABN 54 005 139 873 Telephone: +61 2 9465 5599  
176 Military Road (PO Box 538) Neutral Bay Facsimile: +61 2 9465 5598  
New South Wales 2089 Australia Email: sydney@ba.aurecongroup.com

**AGL**

Client: **TARRONE GAS TURBINE POWER STATION**

Drawn	Signed	Date	Project
Designed	Signed	Date	TARRONE POWER STATION STAGE 1 & 2 4 x GAS TURBINES NORTH AND EAST INDICATIVE ELEVATION
Verified	Signed	Date	
Approved	Signed	Date	

**PRELIMINARY**  
NOT FOR CONSTRUCTION

Project No: **42572**

Scale: NTS  
Sheet Size: **A1**

Drawing No: **EM008**  
Rev: **01**